

UNITED STATES  
DEPARTMENT OF THE INTERIOR  
GEOLOGICAL SURVEY

## APPLICATION FOR PERMIT TO DRILL, DEEPEN, OR PLUG BACK

## 1a. TYPE OF WORK

DRILL ☒DEEPEN ☐PLUG BACK ☐

## b. TYPE OF WELL

OIL  
WELL ☐GAS  
WELL ☒OTHER ☐SINGLE  
ZONE ☐MULTIPLE  
ZONE ☐

## 2. NAME OF OPERATOR

Kenai Oil &amp; Gas Inc.

## 3. ADDRESS OF OPERATOR

2000 Energy Center One 717-17th Street Denver, Colo. 80202

## 4. LOCATION OF WELL (Report location clearly and in accordance with any State requirements \*)

At surface

990' EIL

1650' EIL

At proposed prod. zone

## 14. DISTANCE IN MILES AND DIRECTION FROM NEAREST TOWN OR POST OFFICE\*

4 miles North of Lindrith, New Mexico

## 15. DISTANCE FROM PROPOSED\*

LOCATION TO NEAREST  
PROPERTY OR LEASE LINE, FT.  
(Also to nearest drig. unit line, if any)

990'

18. DISTANCE FROM PROPOSED LOCATION\*  
TO NEAREST WELL, DRILLING, COMPLETED,  
OR APPLIED FOR, ON THIS LEASE, FT.

## 16. NO. OF ACRES IN LEASE

160

## 19. PROPOSED DEPTH

3600'

## 21. ELEVATIONS (Show whether DF, RT, GR, etc.)

Est. 7300' GR

## 23.

## PROPOSED CASING AND CEMENTING PROGRAM

SIZE OF HOLE	SIZE OF CASING	WEIGHT PER FOOT	SETTING DEPTH	QUANTITY OF CEMENT
12 1/2	8 5/8	24#	200'	150 sx - fire to surface
6 1/4	4.500	9.5#	3600'	200 sx

Selectively perforate and sandwater fracture the Pictured Cliffs formation.

A 300 psi WP and 6000 psi test double gate preventer equipped with blind and pipe rams  
will be used for blow out prevention.This gas is dedicated.

The SW/4 of Section 27 is dedicated to this well

IN ABOVE SPACE DESCRIBE PROPOSED PROGRAM: If proposal is to deepen or plug back, give data on present productive zone and proposed new productive zone. If proposal is to drill or deepen directionally, give pertinent data on subsurface locations and measured and true vertical depths. Give blowout preventer program, if any.

24.

SIGNED

Joe F. Elledge

TITLE

Agent

DATE

11-5-79

(This space for Federal or State office use)

PERMIT NO.

APPROVAL DATE

APPROVED BY

TITLE

DATE

CONDITIONS OF APPROVAL, IF ANY:

ok Frank

\*See Instructions On Reverse Side

**NEW MEXICO OIL CONSERVATION COMMISSION  
WELL LOCATION AND ACREAGE DEDICATION PLAT**

Form O-1  
Supersedes O-126  
Effective 1-1-55

All distances must be from the outer boundaries of the Section

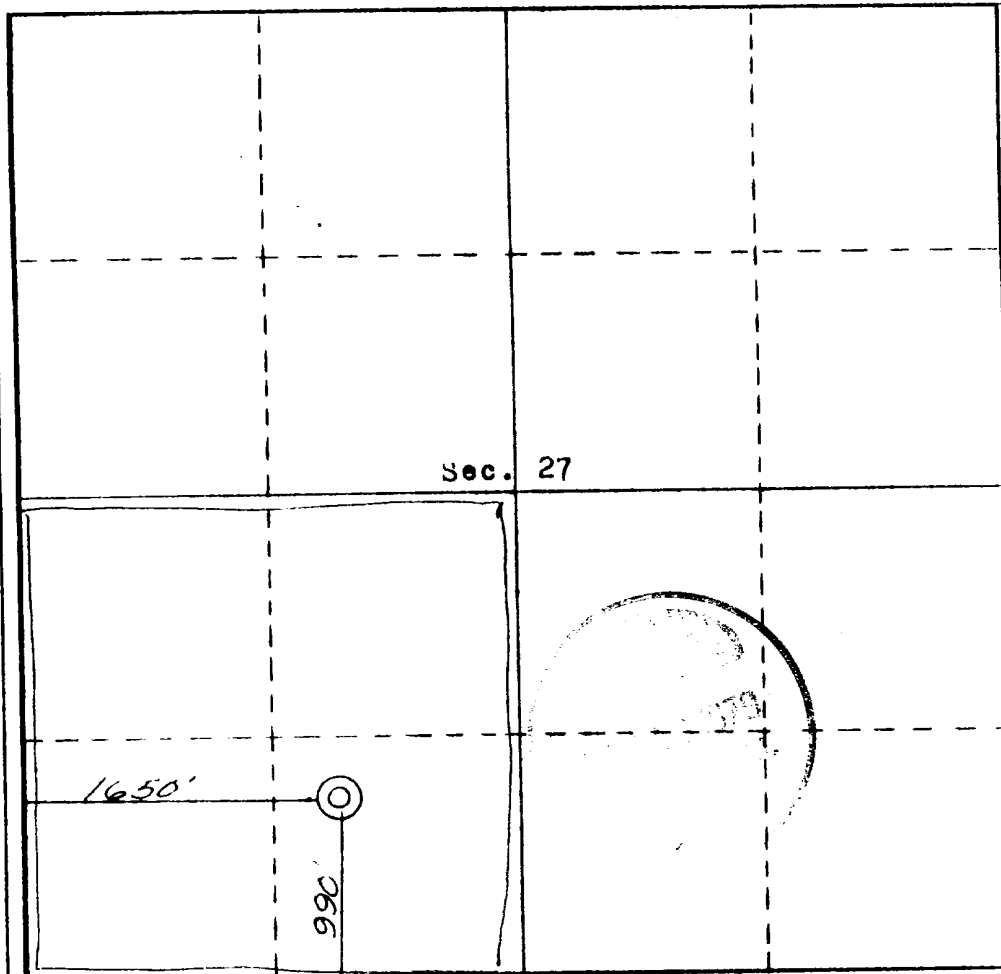
Operator <b>KENAI OIL &amp; GAS</b>		Lease <b>FEDERAL 27</b>		Well No. <b>13</b>
Unit Letter <b>N</b>	Section <b>27</b>	Township <b>25 NORTH</b>	Range <b>2 WEST</b>	County <b>RIO ARriba</b>
Actual Well Location (if Well): 990' feet to the <b>South</b> line and <b>1650</b> feet from the <b>West</b> line.				
Ground Elevation (feet) <b>7321.0</b>	Formational Formation <b>Gavilan Pictured Cliffs</b>	Pool <b>Undesignated</b>	Dedicated Acreage <b>100</b> Acres	

- Outline the acreage dedicated to the subject well by colored pencil or hatchure marks on the plat below.
- If more than one lease is dedicated to the well, outline each and identify the ownership thereof (both as to working interest and royalty).
- If more than one lease of different ownership is dedicated to the well, have the interests of all owners been consolidated by communitization, unitization, force-pooling, etc?

☐ Yes ☐ No If answer is "yes," type of consolidation \_\_\_\_\_

If answer is "no," list the owners and tract descriptions which have actually been consolidated. (Use reverse side of this form if necessary.) \_\_\_\_\_

No allowable will be assigned to the well until all interests have been consolidated (by communitization, unitization, forced-pooling, or otherwise) or until a non-standard unit, eliminating such interests, has been approved by the Commission.



**CERTIFICATION**

I hereby certify that the information contained herein is true and complete to the best of my knowledge and belief.

Name *[Signature]*  
 Position \_\_\_\_\_  
 Agent  
 Company  
**Kenai Oil & Gas Inc.**  
 Date **11-5-79**

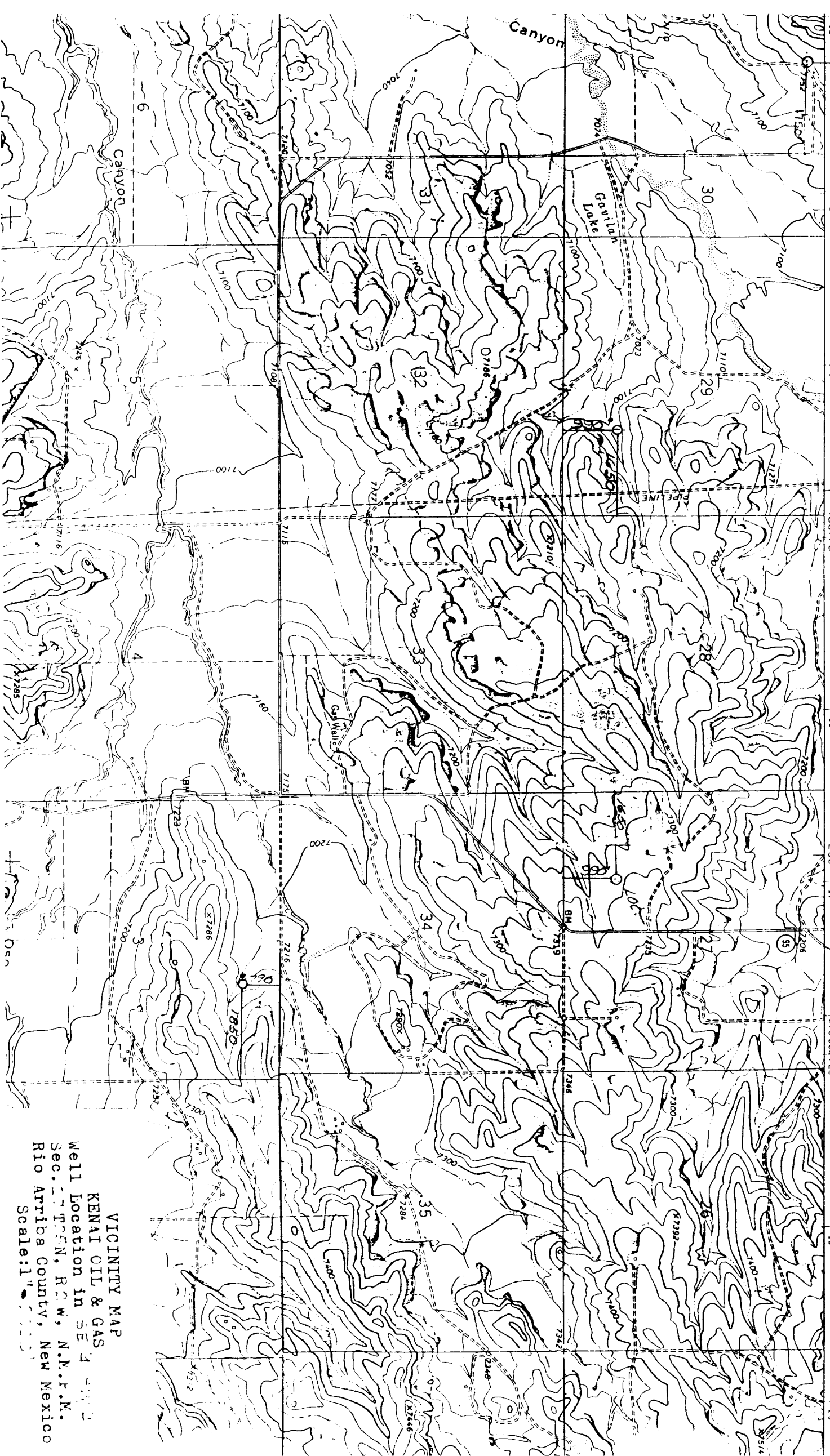
I hereby certify that the well location shown on this plat was plotted from field notes of actual surveys made by me or under my supervision, and that the same is true and correct to the best of my knowledge and belief.

Date of Survey **November 13, 1979**  
 Registered Professional Engineer and/or Land Surveyor  
**Curtis C. Stobking**  
 Certificate No. **5900 LS**



319

270,000 FEET



Scale: 1" = 100'