

UNITED STATES
DEPARTMENT OF THE INTERIOR
GEOLOGICAL SURVEY

APPLICATION FOR PERMIT TO DRILL, DEEPEN, OR PLUG BACK

1a. TYPE OF WORK

DRILL ☒DEEPEN ☐PLUG BACK ☐

b. TYPE OF WELL

OIL
WELL ☐GAS
WELL ☒

OTHER

SINGLE
ZONE ☐MULTIPLE
ZONE ☐

2. NAME OF OPERATOR

Kenai Oil & Gas Inc.

3. ADDRESS OF OPERATOR

2000 Energy Center One- 717-17th St. Denver, Colo.

4. LOCATION OF WELL (Report location clearly and in accordance with any State requirements.*) 80202

At surface

990 FEL 1650 FEL

At proposed prod. zone

14. DISTANCE IN MILES AND DIRECTION FROM NEAREST TOWN OR POST OFFICE*

5 miles NE of Lindrith, New Mexico

15. DISTANCE FROM PROPOSED*

LOCATION TO NEAREST
PROPERTY OR LEASE LINE, FT.
(Also to nearest drig. unit line, if any)

990

16. NO. OF ACRES IN LEASE

160

18. DISTANCE FROM PROPOSED LOCATION*
TO NEAREST WELL, DRILLING, COMPLETED,
OR APPLIED FOR, ON THIS LEASE, FT.

19. PROPOSED DEPTH

3600

17. NO. OF ACRES ASSIGNED
TO THIS WELL

160

20. ROTARY OR CABLE TOOLS

Rotary

21. ELEVATIONS (Show whether DF, RT, GR, etc.)

7107' GR

22. APPROX. DATE WORK WILL START*

12-15-79

23.

PROPOSED CASING AND CEMENTING PROGRAM

SIZE OF HOLE	SIZE OF CASING	WEIGHT PER FOOT	SETTING DEPTH	QUANTITY OF CEMENT
12½	8 5/8	24#	200'	150 sx-circ to surface
6½	4½	9.5#	3600'	200 sx

Selectively perforate and sandwater fracture the Pictured Cliffs formation.

A 3000 psi WP and 6000 psi test double gate preventer equipped with blind and pipe rams
will be used for blow out prevention.This gas is dedicated.

The SE/4 of Section 29 is deidcated to this well.

IN ABOVE SPACE DESCRIBE PROPOSED PROGRAM: If proposal is to deepen or plug back, give data on present productive zone and proposed new productive
zone. If proposal is to drill or deepen directionally, give pertinent data on subsurface locations and measured and true vertical depths. Give blowout
preventer program, if any.

24.

SIGNED


Joe F. Elledge

TITLE

Agent

DATE

11-5-79

(This space for Federal or State office use)

PERMIT NO.

APPROVAL DATE

APPROVED BY

TITLE

DATE

11-5-79

CONDITIONS OF APPROVAL, IF ANY:

ak Smith

*See Instructions On Reverse Side

**NEW MEXICO OIL CONSERVATION COMMISSION
WELL LOCATION AND ACREAGE DEDICATION PLAT**

Form C-102
Supersedes C-128
Effective 1-1-65

All distances must be from the outer boundaries of the Section.

Operator KENAI OIL & GAS			Lease FEDERAL 29			Well No. 34-25		
Unit Letter 0	Section 29	Township 25 NORTH	Range 2 WEST	County RIO ARriba				
Actual Footage Location of Well: 990 feet from the SOUTH line and 1650 feet from the EAST line								
Ground Level Elev. 7107.0	Producing Formation Gavilan Pictured Cliffs-- Undesignated			Pool Undesignated	Dedicated Acreage: 160 Acres			

1. Outline the acreage dedicated to the subject well by colored pencil or hatchure marks on the plat below.
2. If more than one lease is dedicated to the well, outline each and identify the ownership thereof (both as to working interest and royalty).
3. If more than one lease of different ownership is dedicated to the well, have the interests of all owners been consolidated by communitization, unitization, force-pooling, etc?

☐ Yes ☐ No If answer is "yes," type of consolidation _____

If answer is "no," list the owners and tract descriptions which have actually been consolidated. (Use reverse side of this form if necessary.) _____

No allowable will be assigned to the well until all interests have been consolidated (by communitization, unitization, forced-pooling, or otherwise) or until a non-standard unit, eliminating such interests, has been approved by the Commission.

CERTIFICATION

I hereby certify that the information contained herein is true and complete to the best of my knowledge and belief.

Name _____

Position _____

Agent

Company

Kenai Oil & Gas Inc.

Date

11-5-79

I hereby certify that the well location shown on this plat was plotted from field notes of actual surveys made by me or under my supervision, and that the same is true and correct to the best of my knowledge and belief.

Date Surveyed

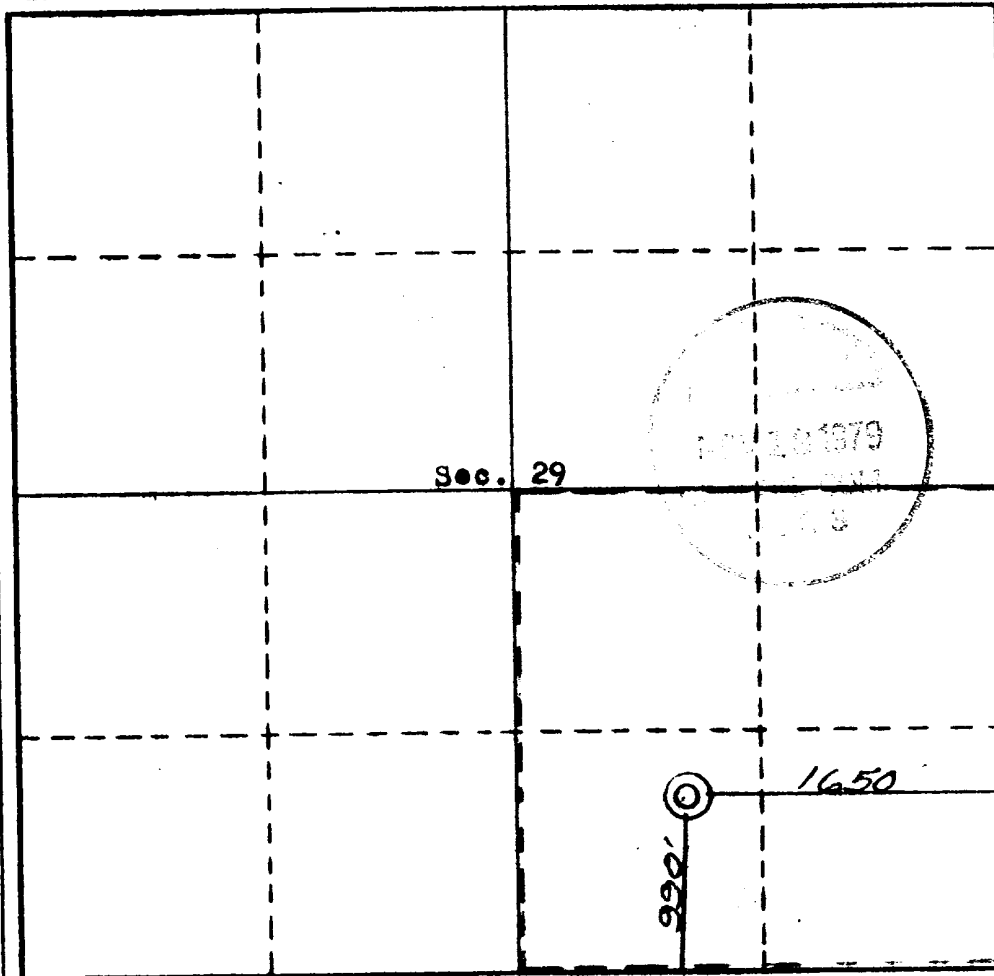
24 October 1979

Registered Professional Engineer and/or Land Surveyor

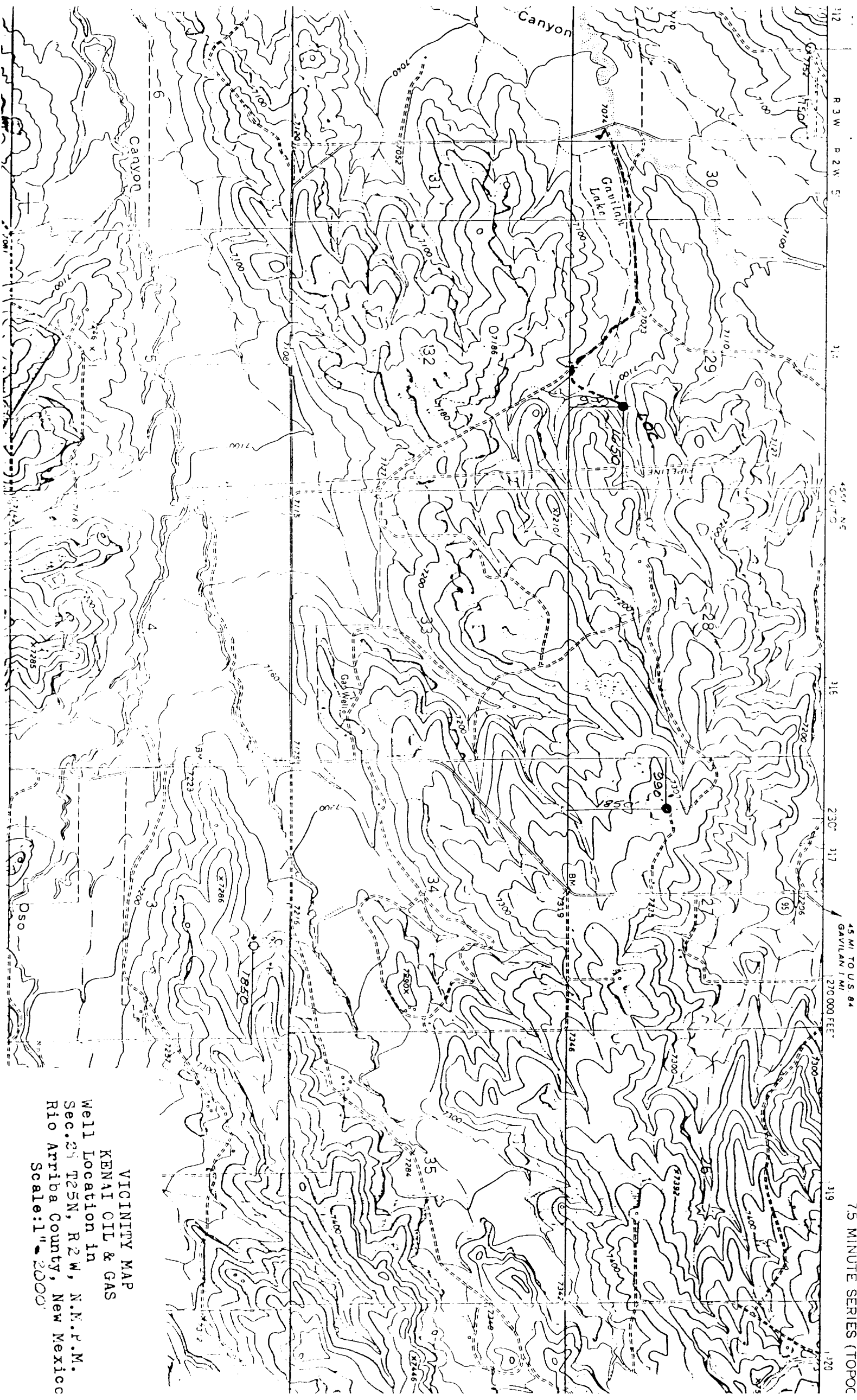
Curtis C. Stokking

Certificate No.

5980 LS



0 300 600 900 1200 1500 1800 2100 2400 2700 3000 3300 3600



VICINITY MAP
KENAI OIL & GAS
Well Location in
Sec. 24 T25N, R2W, N.N.F.M.
Rio Arriba County, New Mexico
Scale: 1" = 2000'