

UNITED STATES  
DEPARTMENT OF THE INTERIOR  
GEOLOGICAL SURVEY

## APPLICATION FOR PERMIT TO DRILL, DEEPEN, OR PLUG BACK

1a. TYPE OF WORK

DRILL ☒DEEPEN ☐PLUG BACK ☐

b. TYPE OF WELL

OIL  
WELL ☒GAS  
WELL ☒

OTHER

SINGLE  
ZONE ☐MULTIPLE  
ZONE ☒

2. NAME OF OPERATOR

ARCO Oil and Gas Company

Division of Atlantic Richfield Company

3. ADDRESS OF OPERATOR

Suite 501

1860 Lincoln Street, Denver, Colorado 80295

4. LOCATION OF WELL (Report location clearly and in accordance with any State requirements.)\*  
At surface

K 1950' F/SL &amp; 1650' F/WL Sec. 6 -24N-4W (NE,SW)

At proposed prod. zone

Same

14. DISTANCE IN MILES AND DIRECTION FROM NEAREST TOWN OR POST OFFICE\*

See NTL-6

15. DISTANCE FROM PROPOSED\*

LOCATION TO NEAREST

PROPERTY OR LEASE LINE, FT.

(Also to nearest drg. unit line, if any)

1650'

18. DISTANCE FROM PROPOSED LOCATION\*

TO NEAREST WELL, DRILLING, COMPLETED,  
OR APPLIED FOR, ON THIS LEASE, FT.

1000'

16. NO. OF ACRES IN LEASE

2611.20

19. PROPOSED DEPTH

7505'

17. NO. OF ACRES ASSIGNED  
TO THIS WELL

121.07

20. ROTARY OR CABLE TOOLS

Rotary

21. ELEVATIONS (Show whether DF, RT, GR, etc.)

6850' GR (Ungraded)

22. APPROX. DATE WORK WILL START\*

When approved appl. rec'd  
from District Engineer.

23.

## PROPOSED CASING AND CEMENTING PROGRAM

SIZE OF HOLE	SIZE OF CASING	WEIGHT PER FOOT	SETTING DEPTH	QUANTITY OF CEMENT
12-1/4"	8-5/8" CD	24#	±300'	300 sx. (cmt. to surf)
7-7/8"	5-1/2" OD	15.5 & 17#	T. D.	550 sx.

Propose to drill well to a depth sufficient to test the Dakota Formation, setting surface casing and if productive setting production casing. If both formations are productive (Gallup and Dakota) will perforate, test and treat if necessary and commingle production.

Pursuant to NTL-6, attached are: Certified Location Plat  
Drilling Plan with attachment  
Surface Use and Operations Plan with attachments.

IN ABOVE SPACE DESCRIBE PROPOSED PROGRAM: If proposal is to deepen or plug back, give data on present productive zone and proposed new productive zone. If proposal is to drill or deepen directionally, give pertinent data on subsurface formations and measured and true vertical depths. Give blowout preventer program, if any.

24.

SIGNED

TITLE

Operations Manager

DATE

1-8-79

(This space for Federal or State office use)

PERMIT NO.

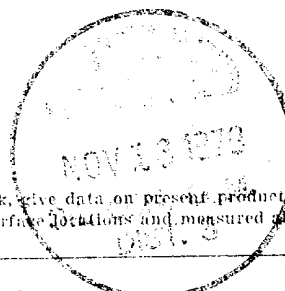
APPROVAL DATE

APPROVED BY

TITLE

DATE

CONDITIONS OF APPROVAL, IF ANY:



NOV 15 1979

NEW MEXICO OIL CONSERVATION COMMISSION  
WELL LOCATION AND ACREAGE DEDICATION PLAT

Form C-107  
Supersedes C-128  
Effective 1-1-65

All distances must be from the outer boundaries of the Section.

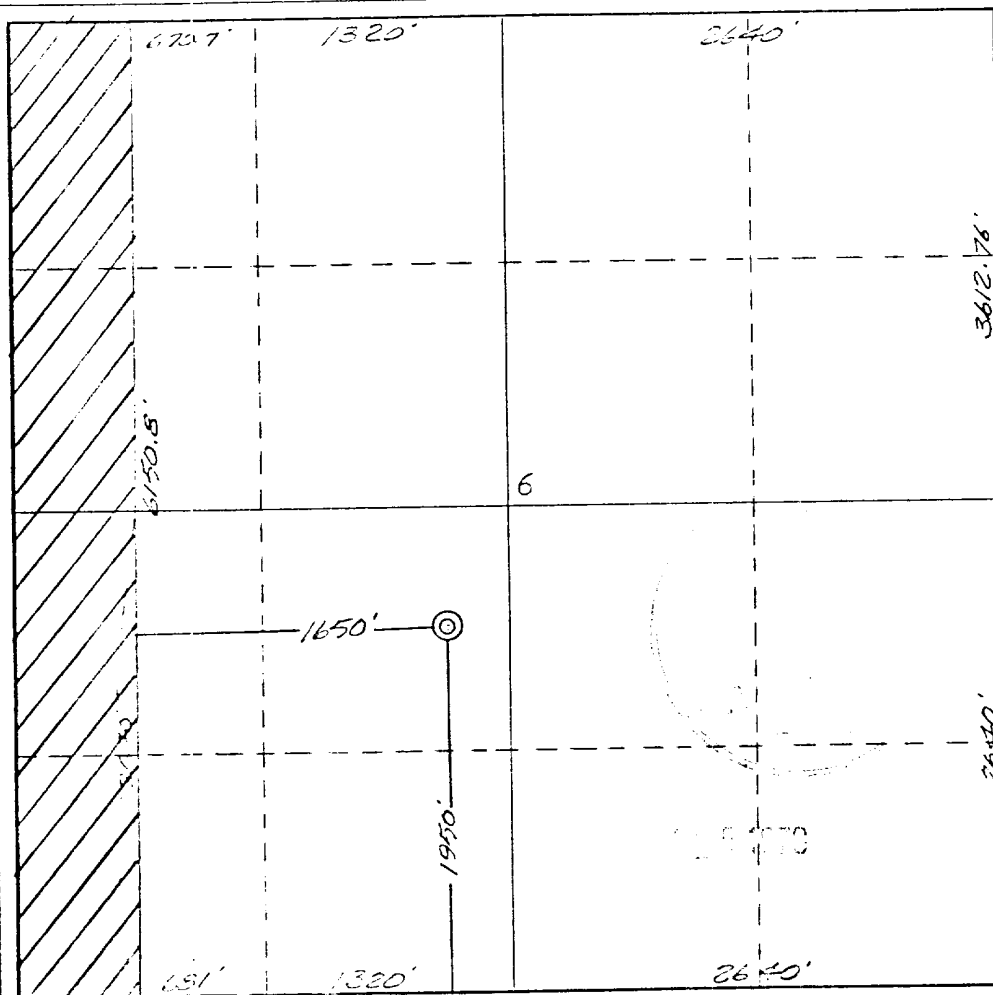
Operator <b>ARCO OIL AND GAS COMPANY</b>			Lease <b>JICARILLA APACHE "H"</b>		Well No. <b>112</b>
Unit Letter <b>K</b>	Section <b>6</b>	Township <b>24 NORTH</b>	Range <b>4 WEST</b>	County <b>RIO ARriba</b>	
Actual Footage Location of Well: <b>1050</b> feet from the <b>SOUTH</b> line and <b>650</b> feet from the <b>WEST</b> line					
Ground Level Elev. <b>6867</b>	Producing Formation <b>Gallup - Dakota</b>		Pool <b>W. Lindorith</b>		Dedicated Acreage: <b>121.07</b> Acres

1. Outline the acreage dedicated to the subject well by colored pencil or hachure marks on the plat below.
2. If more than one lease is dedicated to the well, outline each and identify the ownership thereof (both as to working interest and royalty).
3. If more than one lease of different ownership is dedicated to the well, have the interests of all owners been consolidated by communitization, unitization, force-pooling, etc?

☐ Yes ☐ No If answer is "yes," type of consolidation \_\_\_\_\_

If answer is "no," list the owners and tract descriptions which have actually been consolidated. (Use reverse side of this form if necessary.) \_\_\_\_\_

No allowable will be assigned to the well until all interests have been consolidated (by communitization, unitization, forced-pooling, or otherwise) or until a non-standard unit, eliminating such interests, has been approved by the Commission.

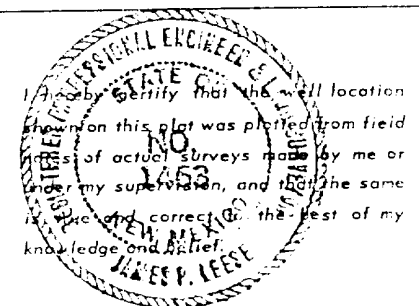


CERTIFICATION

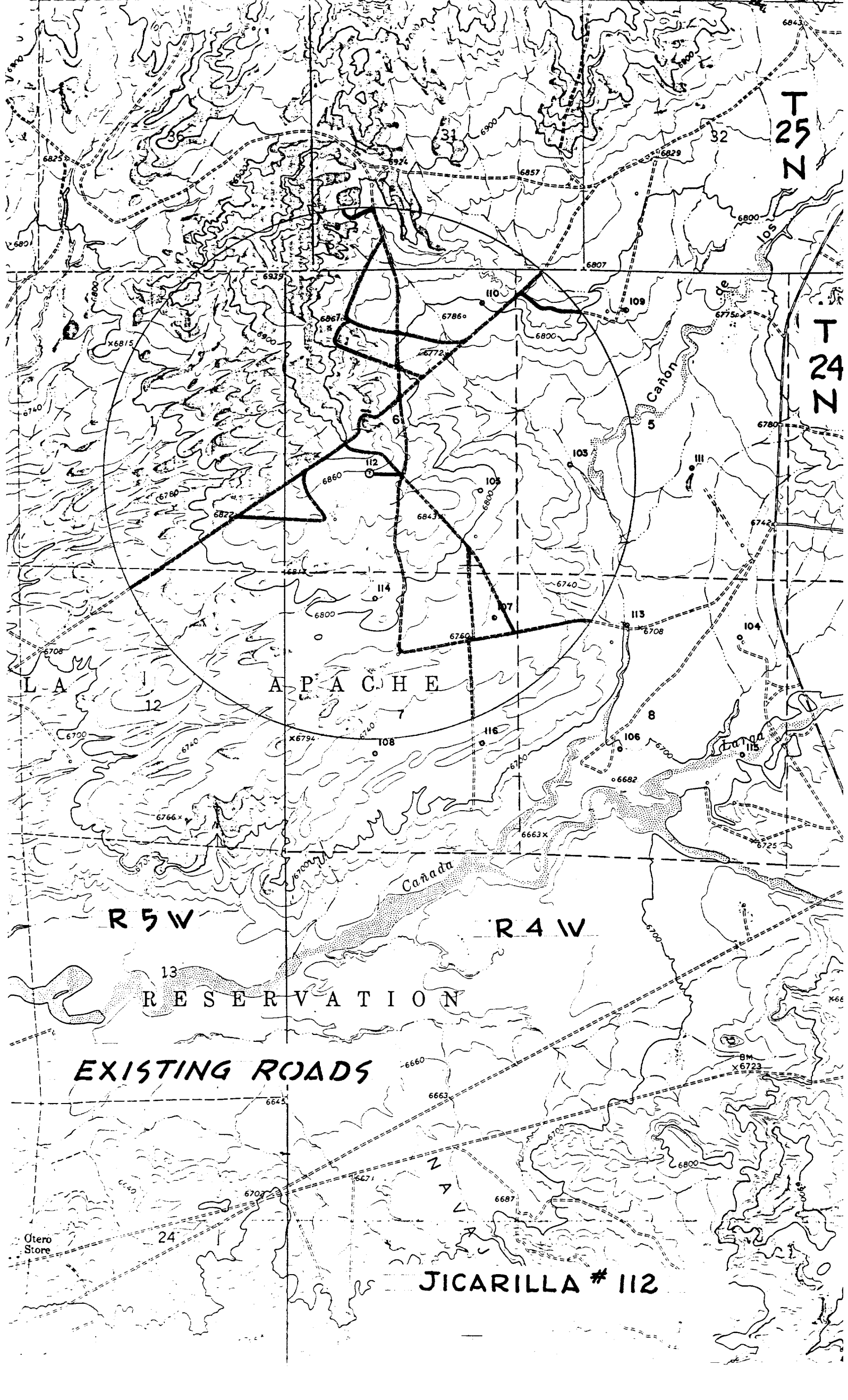
I hereby certify that the information contained herein is true and complete to the best of my knowledge and belief.

*PE Lator for W.A.W.*

Name  
Operations Manager  
Position  
ARCO Oil & Gas Company  
Company  
11/13/79  
Date



Date Surveyed  
28 May 1979  
Registered Professional Engineer  
Geological Land Surveyor  
James P. Leese  
Certificate No. 1463



T 25 N

T 24 N

A P A C H E

R 5 W

R 4 W

13  
R E S E R V A T I O N

EXISTING ROADS

JICARILLA # 112

Otero  
Store