

OIL CONSERVATION COMMISSION

City of DISTRICT

OIL CONSERVATION COMMISSION  
BOX 2088  
SANTA FE, NEW MEXICO

DATE 12-27-79

RE: Proposed MC \_\_\_\_\_  
Proposed DHC \_\_\_\_\_  
Proposed NSL ✓ \_\_\_\_\_  
Proposed SWD \_\_\_\_\_  
Proposed WFX \_\_\_\_\_  
Proposed PMX \_\_\_\_\_

Gentlemen:

I have examined the application dated 12-14-79  
for the Mobil Oil Corp. Leaswell B Unit #3  
Operator Lease and Well No. Unit, S-T-R  
and my recommendations are as follows: M-21-24N-360

Approve  
\_\_\_\_\_  
\_\_\_\_\_  
\_\_\_\_\_  
\_\_\_\_\_

Yours very truly,

AK Lybicki

# Mobil Oil Corporation

NINE GREENWAY PLAZA-SUITE 2700  
HOUSTON, TEXAS 77046

December 19, 1979

New Mexico Energy & Minerals Department (3)  
Oil Conservation Division  
State Land Office Building  
P. O. Box 2088  
Santa Fe, New Mexico 87501

7.01  
UNORTHODOX LOCATION  
MOBIL OIL CORPORATION'S  
LINDRITH B UNIT, WELL #3  
CHACON-DAKOTA ASSOCIATED POOL  
RIO ARriba COUNTY, NEW MEXICO

Gentlemen:

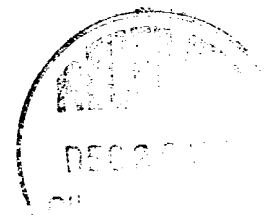
Mobil Oil Corporation respectfully requests permission to drill the subject well at an unorthodox location because of a stock tank in the vicinity of a regular location. To clear this stock tank, it is necessary to move 275' east to an alternate drill site. This new location is only 252' from an inner subdivision line which is less than the 330' as required in Rule 2 (b) of Order No. R-5353.

Proposed well #3 will be located as follows:

790' from the South line  
1065' from the West line  
Sec. 21, T24N - R3W  
Rio Arriba, New Mexico

In support of this request, the following items are submitted:

1. Federal Form 9-331C - Application to Drill
2. Form C-102 - "Well Location and Acreage Dedication Plat
3. Plat showing offset lease owners
4. Topography plat showing the stock tank



# Mobil

New Mexico Energy & Minerals Dept. -2-

December 19, 1979

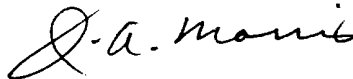
Mobil Oil Corporation respectfully requests that this unorthodox well location be approved administratively as provided for in Rule 2 (c) of Order No. R-5353.

A copy of this letter and attachments are being send to each offset operator by certified mail as their notice of this application and request for their waiver of objection. These offset operators are:

El Paso Natural Gas Company  
P. O. Box 990  
Farmington, New Mexico 87401

Mr. Curtis J. Little  
103 N. Main  
Aztec, New Mexico 87410

Yours very truly,



J. A. Morris  
Regulatory Engineering  
Supervisor

ADBond/cbb

Attachments

cc: District Supv. - Aztec  
USGS - Durango  
Offset Operators

UNITED STATES  
DEPARTMENT OF THE INTERIOR  
GEOLOGICAL SURVEY

## APPLICATION FOR PERMIT TO DRILL, DEEPEN, OR PLUG BACK

## 1a. TYPE OF WORK

DRILL ☒DEEPEN ☐PLUG BACK ☐

## b. TYPE OF WELL

OIL  
WELL ☒GAS  
WELL ☐

OTHER

SINGLE  
ZONE ☒MULTIPLE  
ZONE ☐

## 2. NAME OF OPERATOR

Mobil Oil Corporation

## 3. ADDRESS OF OPERATOR

Nine Greenway Plaza, Suite 2700; Houston, Texas 77046

4. LOCATION OF WELL (Report location clearly and in accordance with any State requirements.)\*  
At surface

790' FSL and 1065' FWL, Sec. 21, T24N, R3W

At proposed prod. zone

Same as surface

## 14. DISTANCE IN MILES AND DIRECTION FROM NEAREST TOWN OR POST OFFICE\*

50 miles Southeast of Farmington

## 10. DISTANCE FROM PROPOSED\*

LOCATION TO NEAREST  
PROPERTY OR LEASE LINE, FT.  
(Also to nearest drilg. unit line, if any)

1065'

## 18. DISTANCE FROM PROPOSED LOCATION\*

TO NEAREST WELL, DRILLING, COMPLETED,  
OR APPLIED FOR, ON THIS LEASE, FT.

1603' South

## 16. NO. OF ACRES IN LEASE

26,365.43

## 19. PROPOSED DEPTH

8200'

17. NO. OF ACRES ASSIGNED  
TO THIS WELL

160

## 20. ROTARY OR CABLE TOOLS

Rotary

## 21. ELEVATIONS (Show whether DF, RT, GR, etc.)

6927' - Ground

## 22. APPROX. DATE WORK WILL START\*

February 1, 1980

## 23. PROPOSED CASING AND CEMENTING PROGRAM

SIZE OF HOLE	SIZE OF CASING	WEIGHT PER FOOT	SETTING DEPTH	QUANTITY OF CEMENT
17-1/2"	13-3/8"	48# H-40	0-300'	1. Circulate to Surface
12-1/2"	8-5/8"	24# K-55	0-2500'	2. Circulate to Surface
	8-5/8"	32# H-40	2500-3900'	
7-7/8"	5-1/2"	15.5# K-55	0-7500'	3. Circulate to Surface
	5-1/2"	17# K-55	7500-8200'	

## Cementing Program

1) Class A with 2% CaCl<sub>2</sub>

(2) Class A with 6% gel tailed in with Neat cement

3) Class H

## Mud Program

Depth	Type of Mud	Weight	Viscosity	pH	Water Loss
0-300'	Spud Mud	10.0#	---	--	---
300-8100'	Fresh Water Gel	9.0#	40	--	---

## Blowout Preventer Program

## See Attachment

IN ABOVE SPACE DESCRIBE PROPOSED PROGRAM: If proposal is to deepen or plug back, give data on present productive zone and proposed new productive zone. If proposal is to drill or deepen directionally, give pertinent data on subsurface locations and measured and true vertical depths. Give blowout preventer program, if any.

24.

SIGNED A. D. Bond A. D. BondTITLE Regulatory EngineeringDATE 12/11/79

(This space for Federal or State office use)

Coordinator II

PERMIT NO. \_\_\_\_\_

APPROVAL DATE \_\_\_\_\_

APPROVED BY \_\_\_\_\_

TITLE \_\_\_\_\_

DATE \_\_\_\_\_

CONDITIONS OF APPROVAL, IF ANY:

NOV 1979  
OIL CON. COM.  
DIST. 3

**NEW MEXICO OIL CONSERVATION COMMISSION  
WELL LOCATION AND ACREAGE DEDICATION PLAT**

Form C-102  
Supersedes C-128  
Effective 1-1-65

All distances must be from the outer boundaries of the Section.

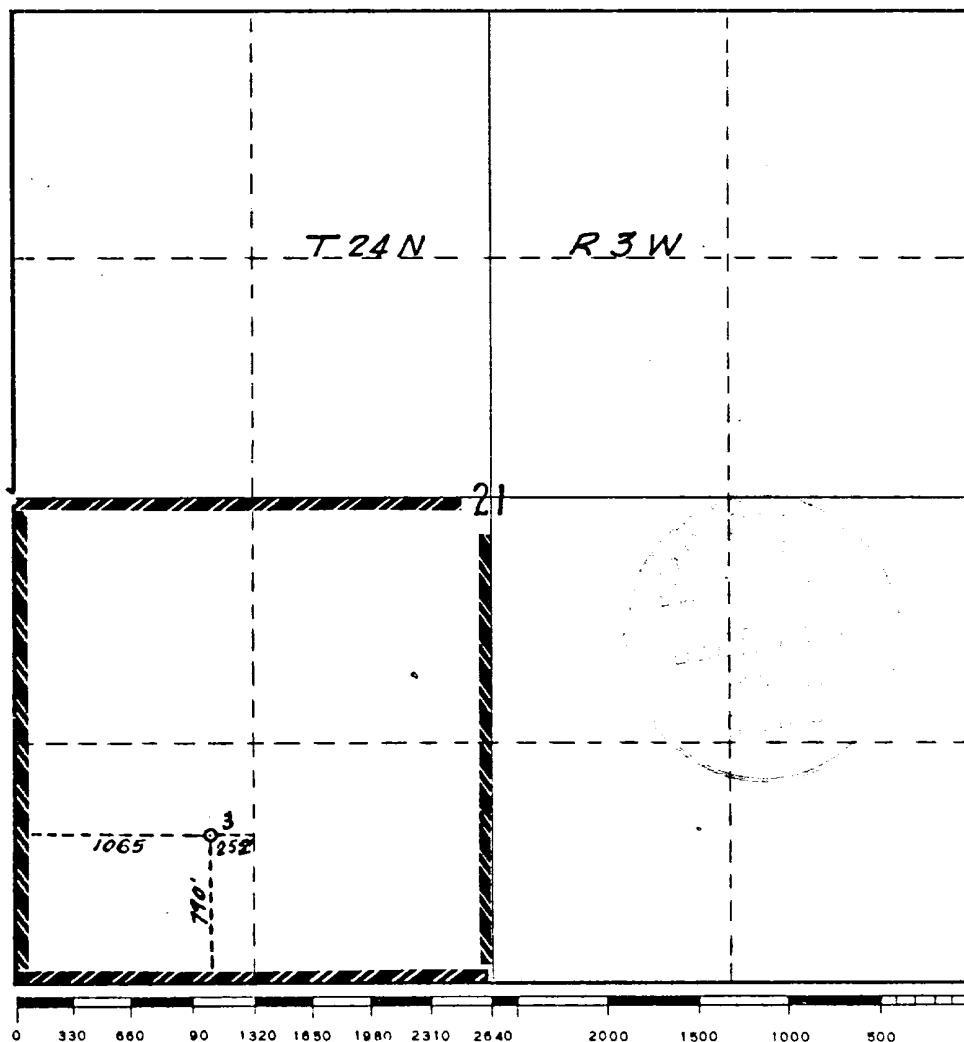
Operator <b>Mobil Oil Corporation</b>			Lease <b>Lindrith B Unit</b>		Well No. <b>3</b>
Unit Letter <b>M</b>	Section <b>21</b>	Township <b>24N</b>	Range <b>3W</b>	County <b>Rio Arriba</b>	
Actual Forfeiture Location of Well: <div style="display: flex; justify-content: space-between;"> <span><b>790</b> feet from the <b>South</b> line and</span> <span><b>1065</b> feet from the <b>West</b> line</span> </div>					
Ground Level Elev. <b>6927'</b>	Producing Formation <b>Dakota</b>	Pool <b>Chacon-Dakota Associated</b>		Dedicated Acreage: <b>160</b> Acres	

1. Outline the acreage dedicated to the subject well by colored pencil or hachure marks on the plat below.
2. If more than one lease is dedicated to the well, outline each and identify the ownership thereof (both as to working interest and royalty).
3. If more than one lease of different ownership is dedicated to the well, have the interests of all owners been consolidated by communitization, unitization, force-pooling, etc?

☒ Yes    ☐ No    If answer is "yes," type of consolidation Unitization

If answer is "no," list the owners and tract descriptions which have actually been consolidated. (Use reverse side of this form if necessary.) \_\_\_\_\_

No allowable will be assigned to the well until all interests have been consolidated (by communitization, unitization, forced-pooling, or otherwise) or until a non-standard unit, eliminating such interests, has been approved by the Commission.



**CERTIFICATION**

*I hereby certify that the information contained herein is true and complete to the best of my knowledge and belief.*

*A. D. Bond*  
Name

**A. D. Bond**

Position **Regulatory Engineering Coordinator II**

Company **Mobil Oil Corporation**

Date **December 11, 1979**

*I hereby certify that the well location shown on this plat was plotted from field notes of actual surveys made by me or under my supervision, and that the same is true and correct to the best of my knowledge and belief.*

Date Surveyed **November 14, 1979**

Registered Professional Engineer and/or Land Surveyor

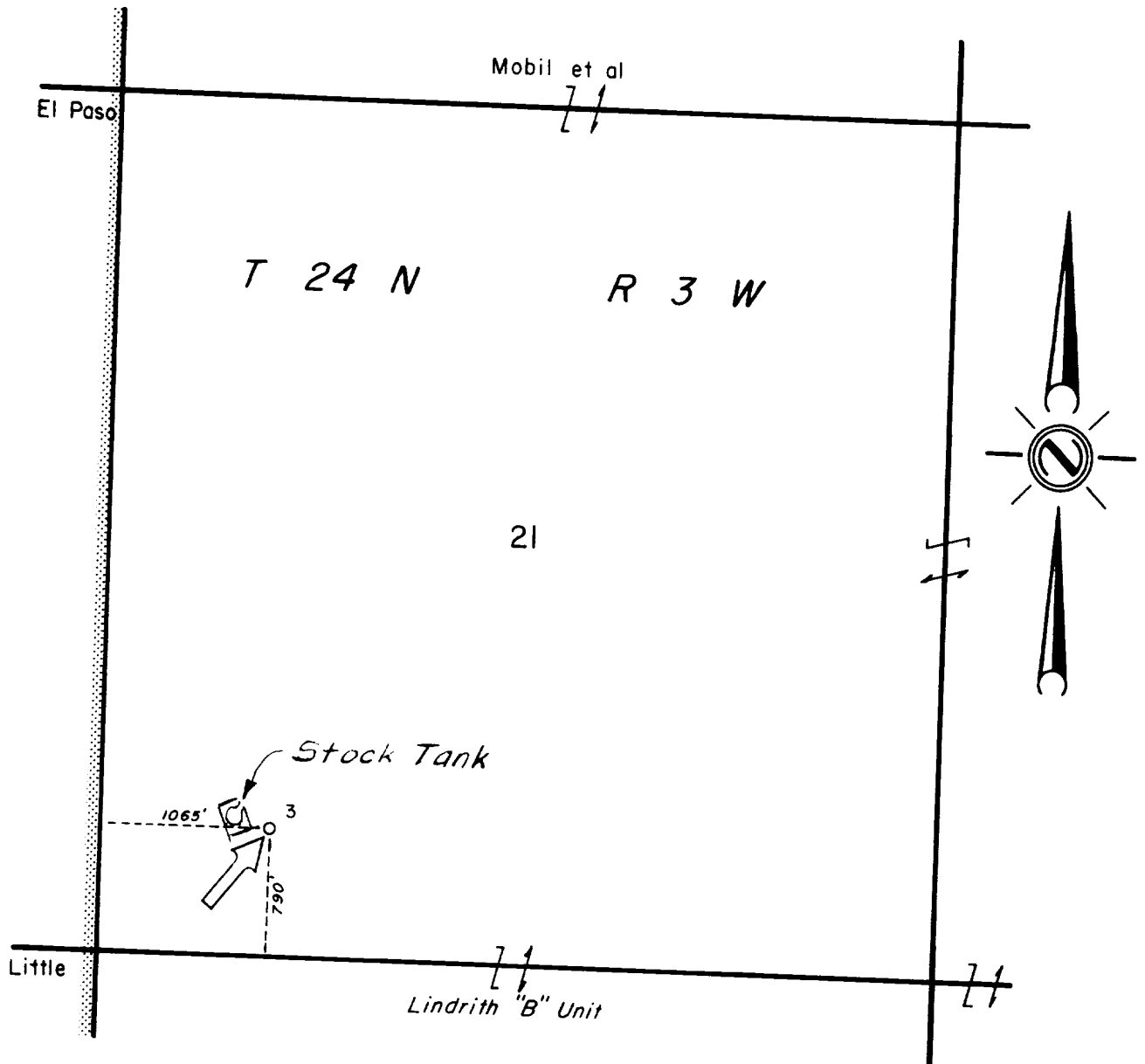
**H. A. Carson, Jr.**

Certificate No.

**5063**

THIS DRAWING AND ALL INFORMATION THEREON IS THE PROPERTY OF MOBIL OIL CORPORATION AND SHALL NOT BE COPIED OR USED EXCEPT FOR THE PURPOSE FOR WHICH

IT IS EXPRESSLY FURNISHED. THE DRAWING AND ANY COPIES THEREOF (PARTIAL OR COMPLETE) SHALL BE RETURNED TO THE OWNER ON DEMAND.



Reserve \_\_\_\_\_ Permit Depth \_\_\_\_\_

Special Instructions \_\_\_\_\_

\_\_\_\_\_

\_\_\_\_\_

\_\_\_\_\_

THE STATE OF TEXAS  
COUNTY OF HARRIS

I hereby certify that this plat truly represents conditions as they actually exist on this lease; that said plat which is drawn to the scale indicated hereon, is to the best of my knowledge true and correct; that it accurately shows said lease with all wells on same; that number and locations of said wells are as indicated hereon; and that this plat correctly reflects all pertinent and required data.

**Mobil Oil Corporation**  
Houston E&P Division

LEASE <u>Lindrith "B" Unit</u>		
WELL NO. <u>3</u>	DATE <u>12/19</u>	19 <u>79</u>
DIVISION <u>Houston</u>		LEASE NO. _____
TOTAL ACRES IN LEASE <u>26,365.43</u> ACRES COVERED BY PLAT _____		
DESCRIPTION <u>Section 21, T24N, R3W of 26,365.43</u>		
<u>acre unit, 50 mi, SE of Farmington</u>		
_____		
Rio Arriba County, New Mexico		
DRAWN <u>WEK</u>	DATE <u>12-17-79</u>	FIELD <u>Chacon - Dakota</u>
SCALE <u>1" = 1000'</u>	FILE NO. _____	Associated