

UNITED STATES  
DEPARTMENT OF THE INTERIOR

## GEOLOGICAL SURVEY

## APPLICATION FOR PERMIT TO DRILL, DEEPEN, OR PLUG BACK

## 1a. TYPE OF WORK

DRILL ☒DEEPEN ☐PLUG BACK ☐

## b. TYPE OF WELL

OIL  
WELL ☐GAS  
WELL ☒

OTHER

SINGLE  
ZONE ☐MULTIPLE  
ZONE ☐

## 2. NAME OF OPERATOR

Dugan Production Corp.

## 3. ADDRESS OF OPERATOR

Box 208, Farmington, NM 87401

## 4. LOCATION OF WELL (Report location clearly and in accordance with any State requirements.\*)

At surface 800' FNL - 800' FWL

At proposed prod. zone

## 14. DISTANCE IN MILES AND DIRECTION FROM NEAREST TOWN OR POST OFFICE\*

4 miles southeast of El Paso Lindrith Compressor

## 15. DISTANCE FROM PROPOSED\*

LOCATION TO NEAREST  
PROPERTY OR LEASE LINE, FT.  
(Also to nearest drlg. unit line, if any)

800'

## 16. NO. OF ACRES IN LEASE

640

17. NO. OF ACRES ASSIGNED  
TO THIS WELL

N/320

18. DISTANCE FROM PROPOSED LOCATION\*  
TO NEAREST WELL, DRILLING, COMPLETED,  
OR APPLIED FOR, ON THIS LEASE, FT.

2350'

## 19. PROPOSED DEPTH

7050'

## 20. ROTARY OR CABLE TOOLS

Rotary

## 21. ELEVATIONS (Show whether DF, RT, GR, etc.)

6704' GL

## 22. APPROX. DATE WORK WILL START\*

March 1, 1978

## 23.

## PROPOSED CASING AND CEMENTING PROGRAM

| SIZE OF HOLE | SIZE OF CASING | WEIGHT PER FOOT | SETTING DEPTH | QUANTITY OF CEMENT |
|--------------|----------------|-----------------|---------------|--------------------|
| 12-1/4"      | 8-5/8"         | 24#             | 230'          | 150 sx             |
| 7-7/8"       | 4-1/2"         | 10.5#           | 7050'         | 350 sx 1st stage   |
|              |                |                 |               | 550 sx 2nd stage   |

Plan to drill with mud to test the Basin Dakota Formation. Plan to run IES log to TD. If productive, will set 4-1/2" casing, cement in two stages, selectively perforate, frac, clean out after frac, run 1-1/2" tbg and complete well.

Will attempt dual completion in the Gallup Formation commingled in the well bore.

Plan to use BOP furnished by rig while drilling (10" 3000 psi hydraulic)

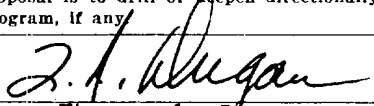
Plan to use BOP rental while completing (6" 3000 psi double gate manual)

Gas Dedicated.

IN ABOVE SPACE DESCRIBE PROPOSED PROGRAM: If proposal is to deepen or plug back, give data on present productive zone and proposed new productive zone. If proposal is to drill or deepen directionally, give pertinent data on subsurface locations and measured and true vertical depths. Give blowout preventer program, if any.

## 24.

SIGNED



TITLE Petroleum Engineer

DATE

12-27-79

(This space for Federal or State office use)

PERMIT NO.

APPROVAL DATE

APPROVED BY

TITLE

DATE

CONDITIONS OF APPROVAL, IF ANY:



1979

\*See Instructions On Reverse Side

GEOLOGICAL SURVEY  
WASHINGTON, D.C.

30-039-22282

5. LEASE DESIGNATION AND SERIAL NO.

Contract 37-E

6. IF INDIAN, ALLOTTEE OR TRIBE NAME

Jicarilla Apache

7. UNIT AGREEMENT NAME

8. FARM OR LEASE NAME

A New Dawn

9. WELL NO.

#3

10. FIELD AND POOL, OR WILDCAT

Basin Dakota / C. G. L. 11, 12, 13

11. SEC., T., R., M., OR BLK.  
AND SURVEY OR AREA

Sec 23 T24N R5W

12. COUNTY OR PARISH

Rio Arriba

NM

17. NO. OF ACRES ASSIGNED  
TO THIS WELL

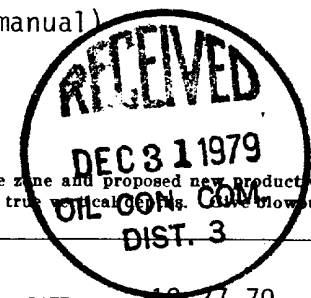
N/320

## 20. ROTARY OR CABLE TOOLS

Rotary

## 22. APPROX. DATE WORK WILL START\*

March 1, 1978



**NEW MEXICO OIL CONSERVATION COMMISSION  
WELL LOCATION AND ACREAGE DEDICATION PLAT**

Form C-102  
Supersedes C-128  
Effective 1-1-65

All distances must be from the outer boundaries of the Section.

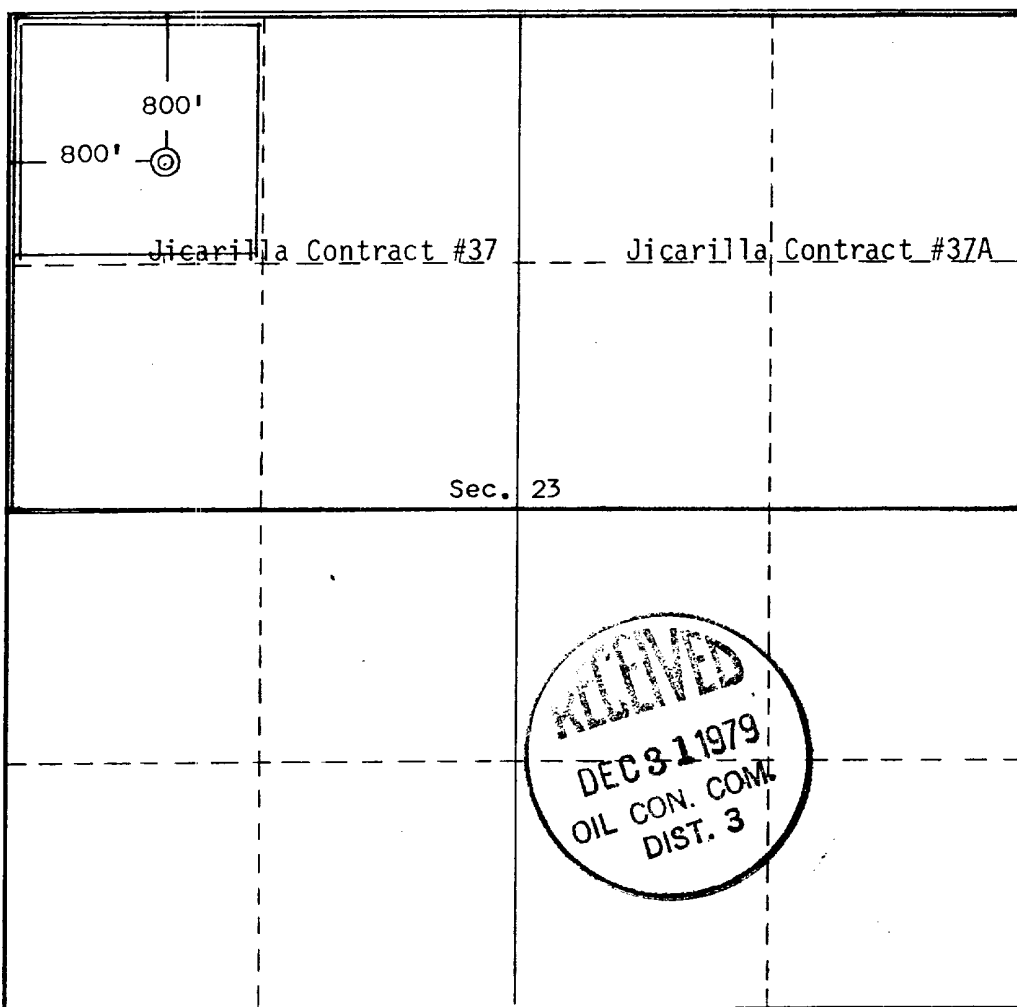
|  |  |                             |                                 |   |                       |
|--|--|-----------------------------|---------------------------------|---|-----------------------|
| Operator<br><b>Dugan Production Corporation</b>  |  |                             | Lease<br><b>A New Dawn</b>      |   | Well No.<br><b>#3</b> |
| Unit Letter<br><b>D</b>  | Section<br><b>23</b>                         | Township<br><b>24 North</b> | Range<br><b>5 West</b>          | County<br><b>Rio Arriba</b>                 |                       |
| Actual Footage Location of Well:<br><div style="display: flex; justify-content: space-between;"> <span>800 feet from the North line and</span> <span>800 feet from the West line</span> </div> |  |                             |                                 |   |                       |
| Ground Level Elev.<br><b>6704</b>  | Producing Formation<br><b>Dakota / Gully</b> |                             | Pool<br><b>Basin / Interest</b> | Dedicated Acreage:<br><b>320 / 40 Acres</b> |                       |

1. Outline the acreage dedicated to the subject well by colored pencil or hatchure marks on the plat below.
2. If more than one lease is dedicated to the well, outline each and identify the ownership thereof (both as to working interest and royalty).
3. If more than one lease of different ownership is dedicated to the well, have the interests of all owners been consolidated by communitization, unitization, force-pooling, etc?

☒ Yes    ☐ No    If answer is "yes," type of consolidation Plan to communitize

If answer is "no," list the owners and tract descriptions which have actually been consolidated. (Use reverse side of this form if necessary.) \_\_\_\_\_

No allowable will be assigned to the well until all interests have been consolidated (by communitization, unitization, forced-pooling, or otherwise) or until a non-standard unit, eliminating such interests, has been approved by the Commission.



**CERTIFICATION**

I hereby certify that the information contained herein is true and complete to the best of my knowledge and belief.

*Thomas A. Dugan*  
Name

Thomas A. Dugan

Position  
Petroleum Engineer

Company  
Dugan Production Corp.

Date  
12-27-79

I hereby certify that the well location shown on this plat was plotted from field notes of actual surveys made by me or under my supervision and that the same is true and correct to the best of my knowledge and belief.

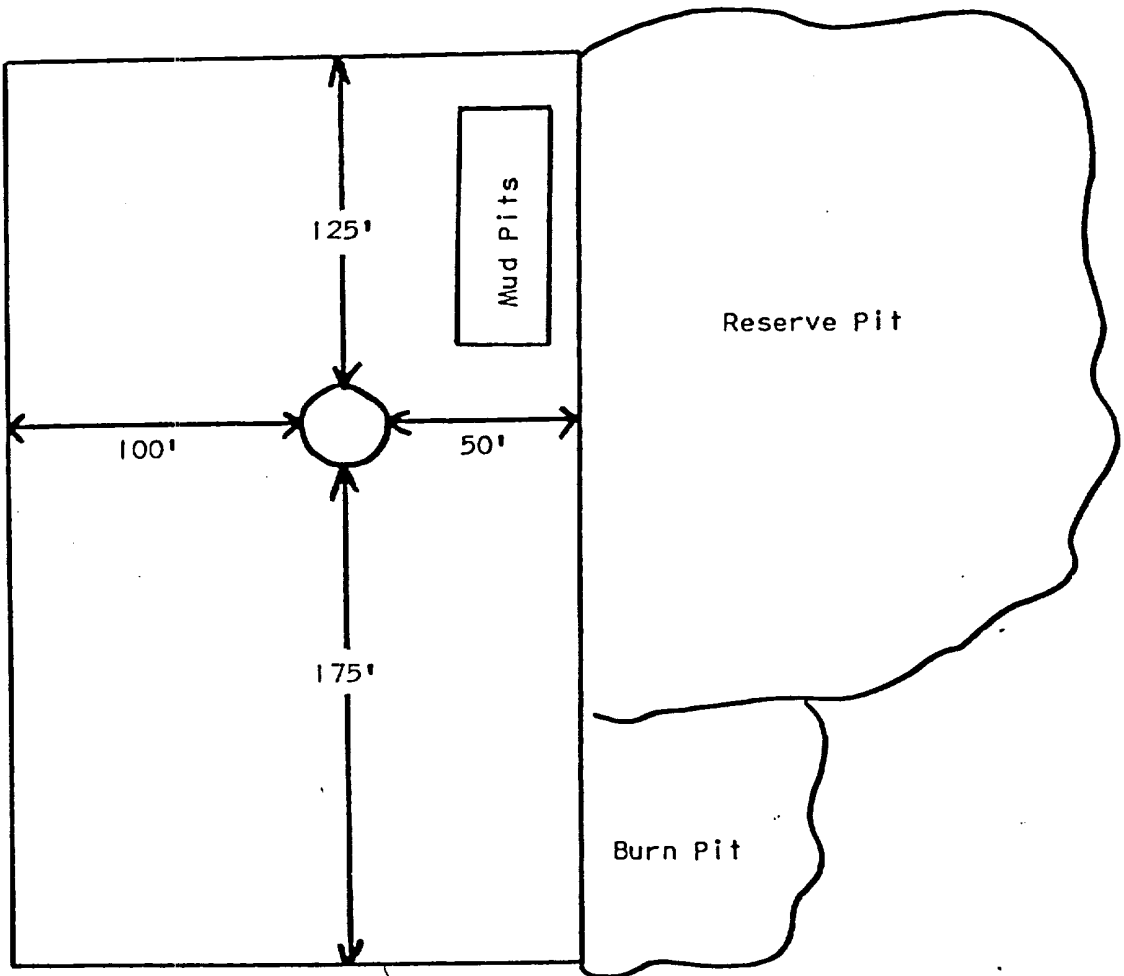
Date Surveyed  
December 15, 1979

Registered Professional Engineer  
and/or Land Surveyor

*Edgar L. Risenhoover*  
Certificate No. 5979

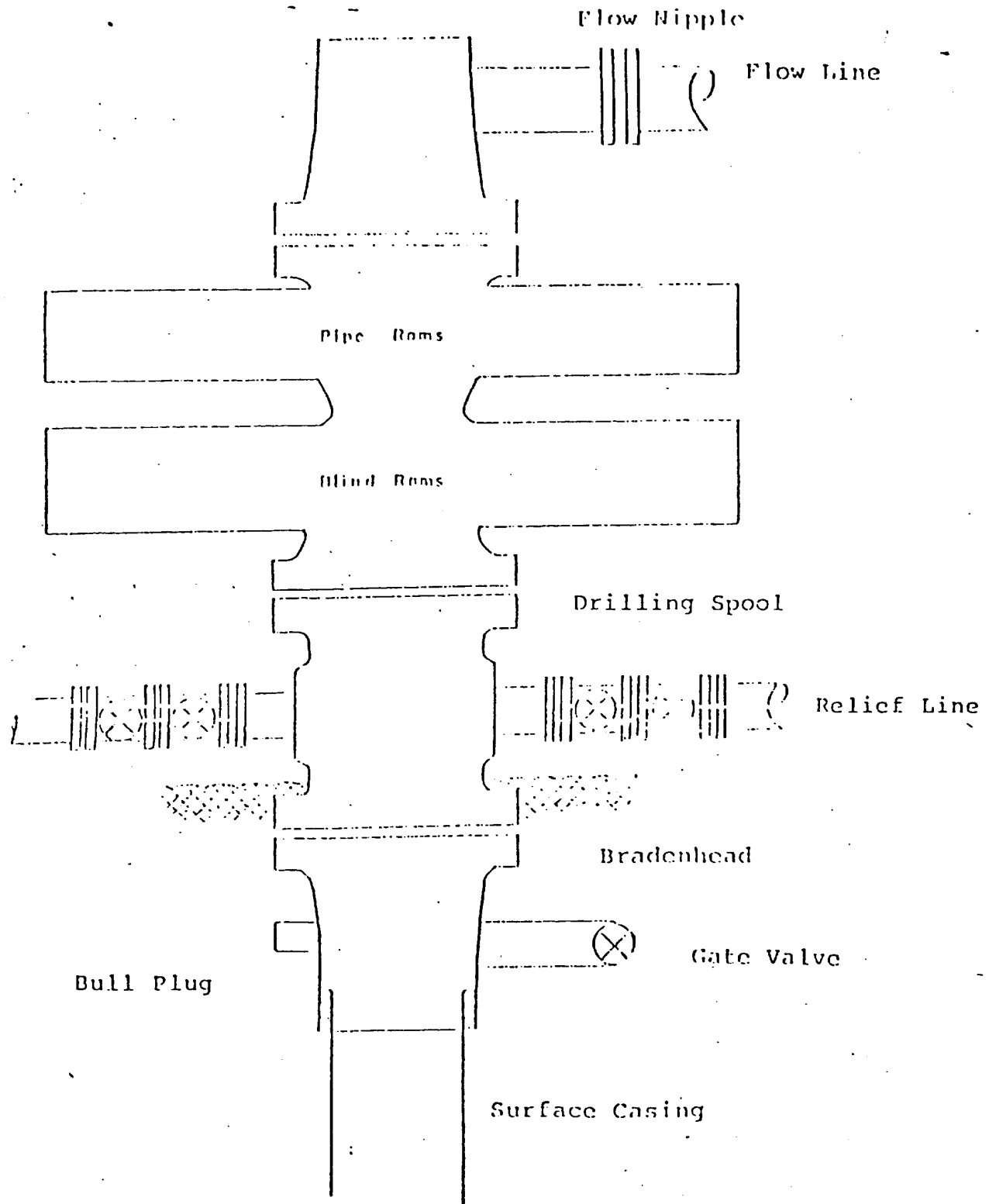
Edgar L. Risenhoover, L.S.

Dugan Production Corp.  
Proposed Location Layout  
A New Dawn #3



*Acquired Land*

# FOR DAKOTA WELL



Series 900 Double Gate ROP, rated  
at 3000 psi Working Pressure

When gas drilling operations begin a Shaffer type  
50 or equivalent rotating head is installed on top of  
the flow nipple and the flow line is converted into  
a blowie line.

DEVELOPMENT PLAN

Dugan Production Corp.

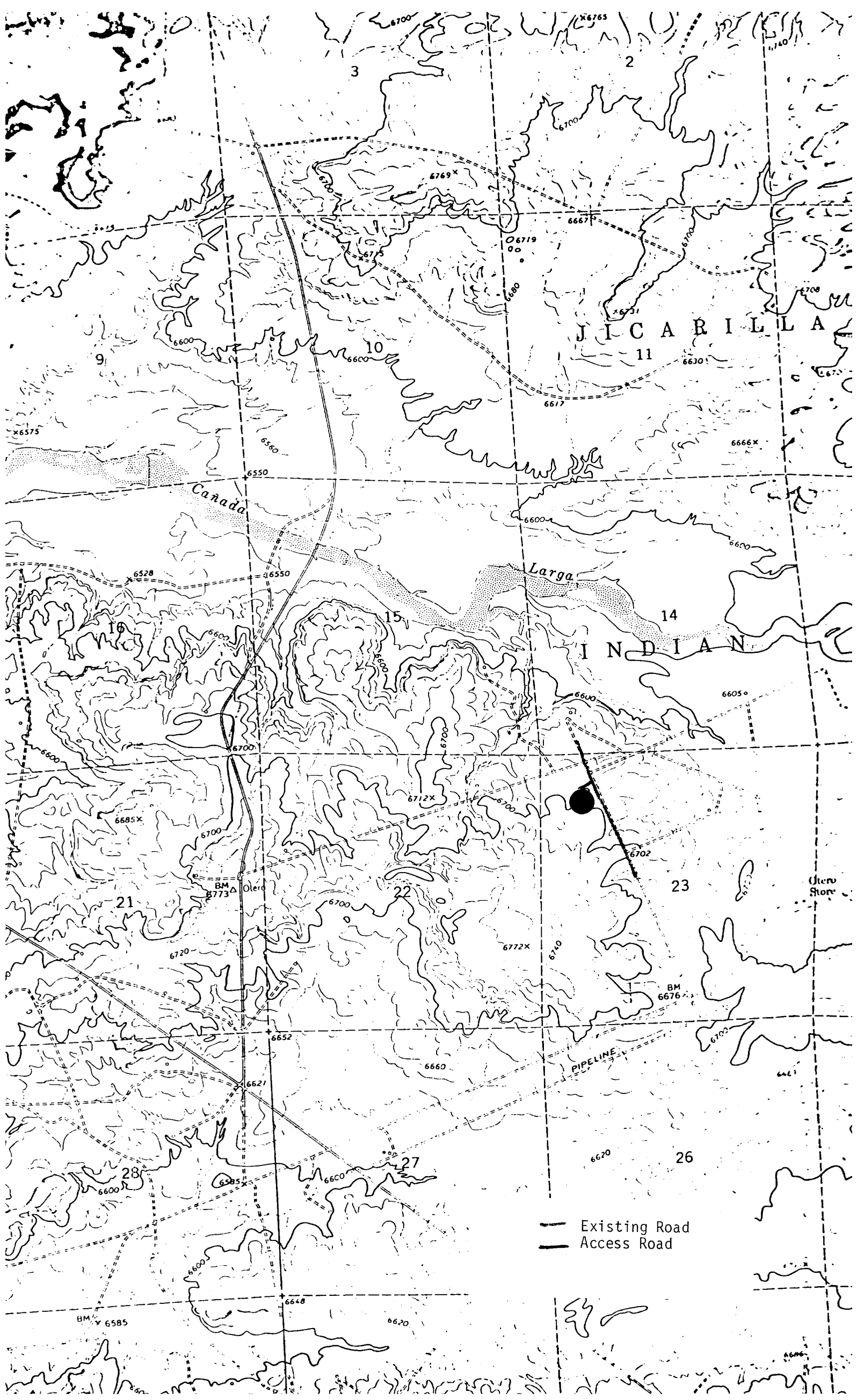
A New Dawn #3

1. Existing roads and existing wells are shown on attached plat.
2. Planned access from existing road approximately 75' to new location. Will leave natural grass and small vegetation on roadway. Will remove large brush or trees from road. Do not plan to make road grade or bar ditches. Will bottom-out any arroyo we cross and not install culverts.
3. Location of well: 800' FNL - 800' FWL  
Section 23 T24N R5W  
Rio Arriba County, NM
4. One additional well(s) planned on this lease at this time.
5. Separator and flow line will be located within 50' of wellhead.
6. Water will be secured from Largo Wash watering hole.
7. Waste materials will be buried on location or in reserve pit.
8. No permanent camp is planned; trailer house will be used on location while drilling.
9. Do not plan to build airstrip.
10. See attached plat for proposed location layout.
11. A general description of the topography, soil characteristics, geologic features, flora and fauna; other surface-use activities and surface ownership of involved lands, proximity of water, occupied dwellings, archeological, historical or cultural sites can be found in the archeologist's report.
12. Geologic name of surface formation: San Jose
13. Estimated tops of important geologic markers:  
See Attached Operations Plan
14. Estimated depths of anticipated water, oil, gas, or other mineral bearing formations which are expected to be encountered:  
water - Ojo Alamo - 2027', oil - 5758' - Gallup gas 2578' Pictured Cliffs - 6811' Dakota
15. We do not anticipate to encounter any abnormal pressures or temperatures or any potential hazards such as those associated with hydrogen sulfide.
16. Will clean up location, fill and level pits, level ruts in road, ressed location and road with Seed Mixture #2 and paint equipment with Sandstone Brown.
17. Operator's Representative:  
Thomas A. Dugan  
Box 208  
Farmington, NM 87401
18. Certification: The following statement must be signed by the lessee's or operator's field representative who is identified in Item #17 of the Plan:

I hereby certify that I, or persons under my direct supervision, have inspected the proposed drillsite and access route; that I am familiar with the conditions which presently exist; that the statements made in this Plan are, to the best of my knowledge, true and correct; and, that the work associated with the operations proposed herein will be performed by Dugan Production Corp. and its contractors and subcontractors in conformity with this Plan and the terms and conditions under which it is approved.

Date: 12-27-79

Thomas A. Dugan



## OPERATIONS PLAN

OPERATOR: Dugan Production Corp.  
WELL NAME: A New Dawn #3  
FIELD: Basin Dakota Otero Gallup  
LOCATION: 800' FNL - 800' FWL Sec 23 T24N R5W Rio Arriba County, NM  
ELEVATION: 6704' GL

|                          |                 |       |               |       |
|--------------------------|-----------------|-------|---------------|-------|
| EXPECTED FORMATION TOPS: | Ojo Alamo       | 2027' | Point Lookout | 4658' |
|                          | Kirtland        | 2188' | Mancos        | 4870' |
|                          | Fruitland       | 2327' | Gallup        | 5758' |
|                          | Pictured Cliffs | 2578' | Greenhorn     | 6650' |
|                          | Lewis           | 2607' | Graneros      | 6762' |
|                          | Cliff House     | 4043' | Dakota        | 6811' |
|                          | Menefee         | 4111' | Total Depth   | 7050' |

LOGGING PROGRAM: IES and CDL

SAMPLES: Samples will be collected at the following depths:  
2550-2600', 4600-4700', 5700-5800', 6750-6880'

### CASING PROGRAM

| <u>Hole Size</u> | <u>Depth</u> | <u>Csg Size, Wt, Grade, &amp; Condition</u> | <u>Cementing Program</u>  |
|------------------|--------------|---|---|
| 12-1/4"          | 230'         | 8-5/8" OD 24# K-55 new                      | Cement surface pipe with 150 sx class "B" cement with 3% CaCl.  |
| 7-7/8"           | 7050'        | 4-1/2" OD 10.5# J-55 new                    | 1st stage: Cement w/200 sx Halliburton lite plus 10# gilsonite per sx followed by 150 sx class "B" w/10# gilsonite per sx.<br>1st stage total slurry 550 cu ft<br><br>2nd stage: Cement through Baker stage tool at 4750' using 500 sx Halliburton lite plus 6% gel followed by 50 sx neat.<br>2nd stage total slurry 1370 cu ft. |

### WELLHEAD EQUIPMENT

Casing head 8-5/8" x 10" 600 series "new"  
Tubing head 10" 600 series with screwed outlets x 6" 600 series "new"

|               |   |          |
|---------------|---|----------|
| Office        | - | 325-0238 |
| Tom Dugan     |   | 325-5694 |
| Jim Jacobs    |   | 325-8353 |
| Kurt Fagrelus |   | 334-3381 |
| Bill Donovan  |   | 325-5692 |
| James Hazen   |   |          |