

30-039-22316

NO. OF COPIES RECEIVED	5
DISTRIBUTION	
SANTA FE	1
FILE	1
U.S.G.S.	2
LAND OFFICE	
OPERATOR	1

## NEW MEXICO OIL CONSERVATION COMMISSION

Form C-101  
Revised 1-1-65

5A. Indicate Type of Lease	
STATE <input type="checkbox"/>	FEE <input checked="" type="checkbox"/>
5. State Oil & Gas Lease No.	

## APPLICATION FOR PERMIT TO DRILL, DEEPEN, OR PLUG BACK

1a. Type of Work		7. Unit Agreement Name	
b. Type of Well OIL WELL <input checked="" type="checkbox"/> GAS WELL <input type="checkbox"/> OTHER <input type="checkbox"/>		8. Farm or Lease Name W. O. Hughes	
2. Name of Operator Mobil Producing TX. & N.M. Inc.		9. Well No. 5	
3. Address of Operator Nine Greenway Plaza, Suite 2700; Houston, Texas 77046		10. Field and Pool, or Wildcat West Lindrith Gallup-Dakota Oil <i>est</i>	
4. Location of Well UNIT LETTER <u>M</u> LOCATED <u>990</u> FEET FROM THE <u>South</u> LINE AND <u>790</u> FEET FROM THE <u>West</u> LINE OF SEC. <u>8</u> TWP. <u>24N</u> RGE. <u>3W</u> NMPM		12. County Rio Arriba	
19. Proposed Depth 8200'		19A. Formation Gallup-Dakota	
20. Rotary or C.T. Rotary		21. Elevations (Show whether DF, RT, etc.) 6841'-Ground	
21A. Kind & Status Plug. Bond On File		21B. Drilling Contractor Unknown	
22. Approx. Date Work will start As soon as possible.			

## 23. PROPOSED CASING AND CEMENT PROGRAM

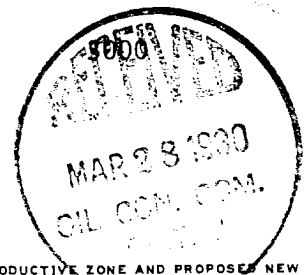
SIZE OF HOLE	SIZE OF CASING	WEIGHT PER FOOT	SETTING DEPTH	SACKS OF CEMENT	EST. TOP
17-1/4"	13-3/8"	48# H-40	300'	Circulate	Surface
11"	8-5/8"	24# K-55	2500'	Circulate	Surface
		32# H-40	3900'	Circulate	Surface
7-7/8"	5-1/2"	15.5# K-55	7500'	Circulate	3800'
		17# K-55	8200'	Circulate	3800'

## Blowout Preventer Program

Casing String	Equipment Size & API Series	NO. & Type	Test Pressure (psi)
Surface	12 900	1 Master Gate & 1 Pipe Ram	1000
Intermediate	8 900	1 Master Gate & 1 Pipe Ram	

APPROVAL VALID  
FOR 90 DAYS UNLESS  
DRILLING COMMENCED,

EXPIRES 6-26-80



IN ABOVE SPACE DESCRIBE PROPOSED PROGRAM: IF PROPOSAL IS TO DEEPEN OR PLUG BACK, GIVE DATA ON PRESENT PRODUCTIVE ZONE AND PROPOSED NEW PRODUCTIVE ZONE. GIVE BLOWOUT PREVENTER PROGRAM, IF ANY.

I hereby certify that the information above is true and complete to the best of my knowledge and belief.  
Regulatory Engineering

Signed A. D. Bond A. D. Bond Title Coordinator II Date March 18, 1980

(This space for State Use)

APPROVED BY Frank T. Cherry TITLE SUPERVISOR DISTRICT # 3

MAR 28 1980

CONDITIONS OF APPROVAL, IF ANY:



**NEW MEXICO OIL CONSERVATION COMMISSION  
WELL LOCATION AND ACREAGE DEDICATION PLAT**

Form C-102  
Supersedes C-128  
Effective 1-1-65

All distances must be from the outer boundaries of the Section.

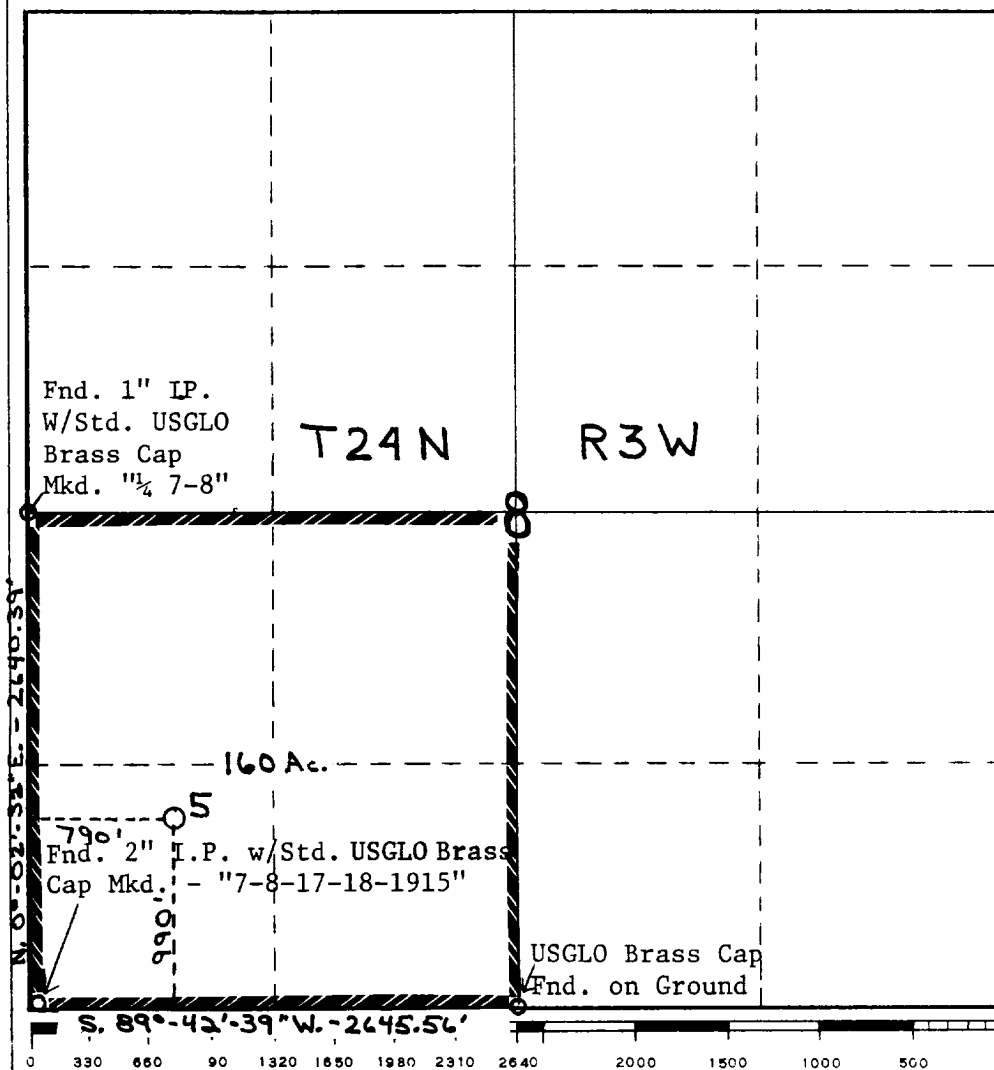
Operator <b>Mobil Producing TX. &amp; N.M. Inc.</b>			Lease <b>W. O. Hughes</b>		Well No. <b>5</b>
Unit Letter <b>M</b>	Section <b>8</b>	Township <b>24N</b>	Range <b>3W</b>	County <b>Rio Arriba</b>	
Actual Footage Location of Well: <div style="display: flex; justify-content: space-between;"> <span>990 feet from the</span> <span>South line and</span> <span>790 feet from the</span> <span>West line</span> </div>					
Ground Level Elev. <b>6841'</b>	Producing Formation <b>Gallup-Dakota</b>	Pool <b>West Lindrith Gallup-Dakota Oil <i>ext</i></b>		Dedicated Acreage: <b>160</b> Acres	

1. Outline the acreage dedicated to the subject well by colored pencil or hachure marks on the plat below.
2. If more than one lease is dedicated to the well, outline each and identify the ownership thereof (both as to working interest and royalty).
3. If more than one lease of different ownership is dedicated to the well, have the interests of all owners been consolidated by communitization, unitization, force-pooling, etc?

☐ Yes   ☐ No   If answer is "yes," type of consolidation \_\_\_\_\_

If answer is "no," list the owners and tract descriptions which have actually been consolidated. (Use reverse side of this form if necessary.) \_\_\_\_\_

No allowable will be assigned to the well until all interests have been consolidated (by communitization, unitization, forced-pooling, or otherwise) or until a non-standard unit, eliminating such interests, has been approved by the Commission.



**CERTIFICATION**

I hereby certify that the information contained herein is true and complete to the best of my knowledge and belief.

*A. D. Bond*

Name  
**A. D. Bond**  
Position **Regulatory  
Engineering Coordinator II**  
Company  
**Mobil Producing TX. & N.M. Inc.**

Date  
**March 18, 1980**

I hereby certify that the well location shown on this plat was plotted from field notes of actual surveys made by me or under my supervision, and that the same is true and correct to the best of my knowledge and belief.

*H. A. Carson, Jr.*

Date Surveyed  
**March 7, 1980**

Registered Professional Engineer  
and/or Land Surveyor

**H. A. Carson, Jr.**

Certificate No.  
**5063**

