

UNITED STATES
DEPARTMENT OF THE INTERIOR
GEOLOGICAL SURVEY

APPLICATION FOR PERMIT TO DRILL, DEEPEN, OR PLUG BACK

1a. TYPE OF WORK
 DRILL ☒ DEEPEN ☐ PLUG BACK ☐

b. TYPE OF WELL
 OIL WELL ☒ GAS WELL ☐ OTHER ☐ SINGLE ZONE ☒ MULTIPLE ZONE ☐

2. NAME OF OPERATOR
 Mobil Producing TX. & N.M. Inc.

3. ADDRESS OF OPERATOR
 9 Greenway Plaza, Suite 2700; Houston, Texas 77046

4. LOCATION OF WELL (Report location clearly and in accordance with any State requirements.)
 At surface
 1845' FNL and 790' FWL, Sec. 8, T24N, R3W
 At proposed prod. zone
 Same as surface

5. LEASE DESIGNATION AND SERIAL NO.
 Santa Fe 080472

6. IF INDIAN, ALLOTTEE OR TRIBE NAME

7. UNIT AGREEMENT NAME

8. FARM OR LEASE NAME
 Jillson Federal

9. WELL NO.
 4

10. FIELD AND POOL OR WILDCAT
 West Lindrith
 Gallup-Dakota Oil Pool *apt*

11. SEC., T., R., M., OR BLK.
 AND SURVEY OR AREA
 Sec. 8, T24N, R3W

12. COUNTY OR PARISH
 Rio Arriba

13. STATE
 New Mexico

14. DISTANCE IN MILES AND DIRECTION FROM NEAREST TOWN OR POST OFFICE*
 50 miles Southeast from Farmington

15. DISTANCE FROM PROPOSED* LOCATION TO NEAREST PROPERTY OR LEASE LINE, FT. (Also to nearest drg. unit line, if any)
 790'

16. NO. OF ACRES IN LEASE
 382.52

17. NO. OF ACRES ASSIGNED TO THIS WELL
 160

18. DISTANCE FROM PROPOSED LOCATION* TO NEAREST WELL, DRILLING, COMPLETED, OR APPLIED FOR, ON THIS LEASE, FT.
 3097'

19. PROPOSED DEPTH
 8000'

20. ROTARY OR CABLE TOOLS
 Rotary

21. ELEVATIONS (Show whether DF, RT, GR, etc.)
 6901.5 GR

22. APPROX. DATE WORK WILL START*
 As soon as possible

23. PROPOSED CASING AND CEMENTING PROGRAM

SIZE OF HOLE	SIZE OF CASING	WEIGHT PER FOOT	SETTING DEPTH	QUANTITY OF CEMENT
17-1/2"	12-3/4"	45.5# H-40	0-300'	1) Circulate to surface
11"	8-5/8"	24# S-80	0-3100'	2) Circulate to surface
		28# S-80	3100-3900'	
7-7/8"	5-1/2"	15.5# K-55	0-8000'	3) Circulate to 3800'

CEMENTING PROGRAM

- 1) Class B with 2% CaCl₂.
- 2) Light weight cement with 1/4#/sx F.C. tailed in with Class B
- 3) Class B with 4% gel and 1/4#/sx F.C. tailed in with Class B with 1/4#/sx F.C.

MUD PROGRAM

Depth	Type of Mud	Weight	Viscosity	pH	Water Loss
0-400'	Spud	9.0 - 9.2	35-45	9+	
400-8000'	Fresh Water Gel	8.8	35-40	9+	

BLOWOUT PREVENTER PROGRAM

Attached.

IN ABOVE SPACE DESCRIBE PROPOSED PROGRAM: If proposal is to deepen or plug back, give data on present productive zone and proposed new productive zone. If proposal is to drill or deepen directionally, give pertinent data on subsurface locations and measured and true vertical depths. Give blowout preventer program, if any.

24. *J. A. Morris* J. A. Morris Regulatory Engineering
 SIGNATURE TITLE SUPERVISOR DATE 3/21/80

(This space for Federal or State office use)

PERMIT NO. APPROVAL DATE

APPROVED BY
 CONDITIONS OF APPROVAL, IF ANY:

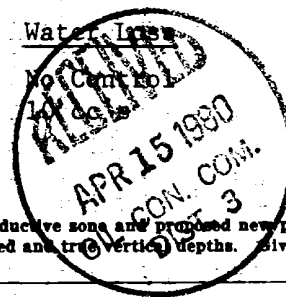
JAMES F. C. DISTRICT ENGINEER

MAR 31 1980

DRILLING OPERATIONS AUTHORIZED ARE
 SUBJECT TO COMPLIANCE WITH ATTACHED
 "MINERAL REQUIREMENTS"

*See Instructions On Reverse Side

S. GEOLOGICAL SURVEY
 DURANGO, COLO.



**NEW MEXICO OIL CONSERVATION COMMISSION
WELL LOCATION AND ACREAGE DEDICATION PLAT**

Form C-102
Supersedes C-128
Effective 1-1-65

All distances must be from the outer boundaries of the Section.

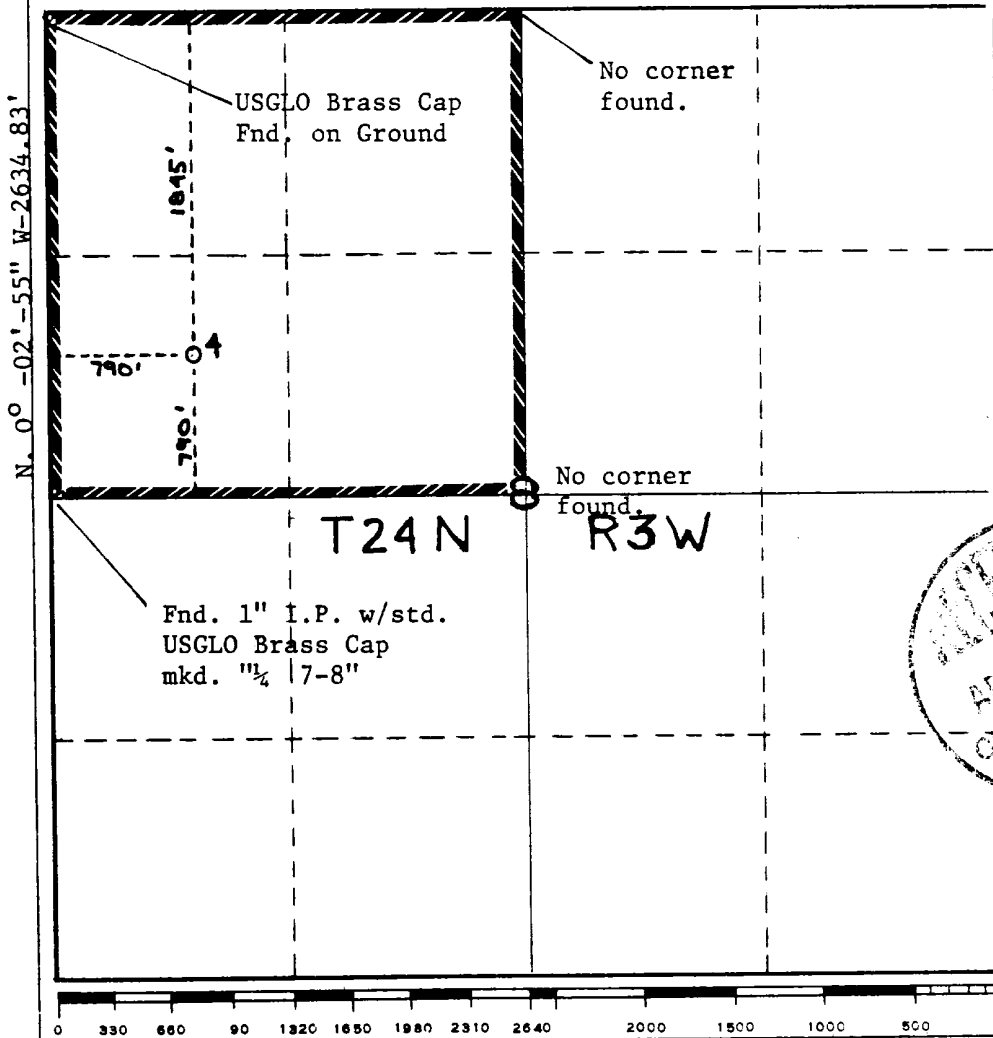
Operator Mobil Producing TX. & N.M. Inc.			Lease Jillson Federal		Well No. 4
Unit Letter E	Section 8	Township 24N	Range 3W	County Rio Arriba	
Actual Footage Location of Well: 1845 feet from the North line and 790 feet from the West line					
Ground Level Elev. 6901.5'	Producing Formation Gallup-Dakota		Pool West Lindrith		Dedicated Acreage: 160 Acres

1. Outline the acreage dedicated to the subject well by colored pencil or hachure marks on the plat below.
2. If more than one lease is dedicated to the well, outline each and identify the ownership thereof (both as to working interest and royalty).
3. If more than one lease of different ownership is dedicated to the well, have the interests of all owners been consolidated by communitization, unitization, force-pooling, etc?

☐ Yes ☐ No If answer is "yes," type of consolidation _____

If answer is "no," list the owners and tract descriptions which have actually been consolidated. (Use reverse side of this form if necessary.) _____

No allowable will be assigned to the well until all interests have been consolidated (by communitization, unitization, forced-pooling, or otherwise) or until a non-standard unit, eliminating such interests, has been approved by the Commission. N. 89° - 40' - 01" E-5286.29'



CERTIFICATION

I hereby certify that the information contained herein is true and complete to the best of my knowledge and belief.

Name **A. D. Bond**
Position **Regulatory Engineering Coordinator II**
Company **Mobil Producing TX. & N.M. Inc.**

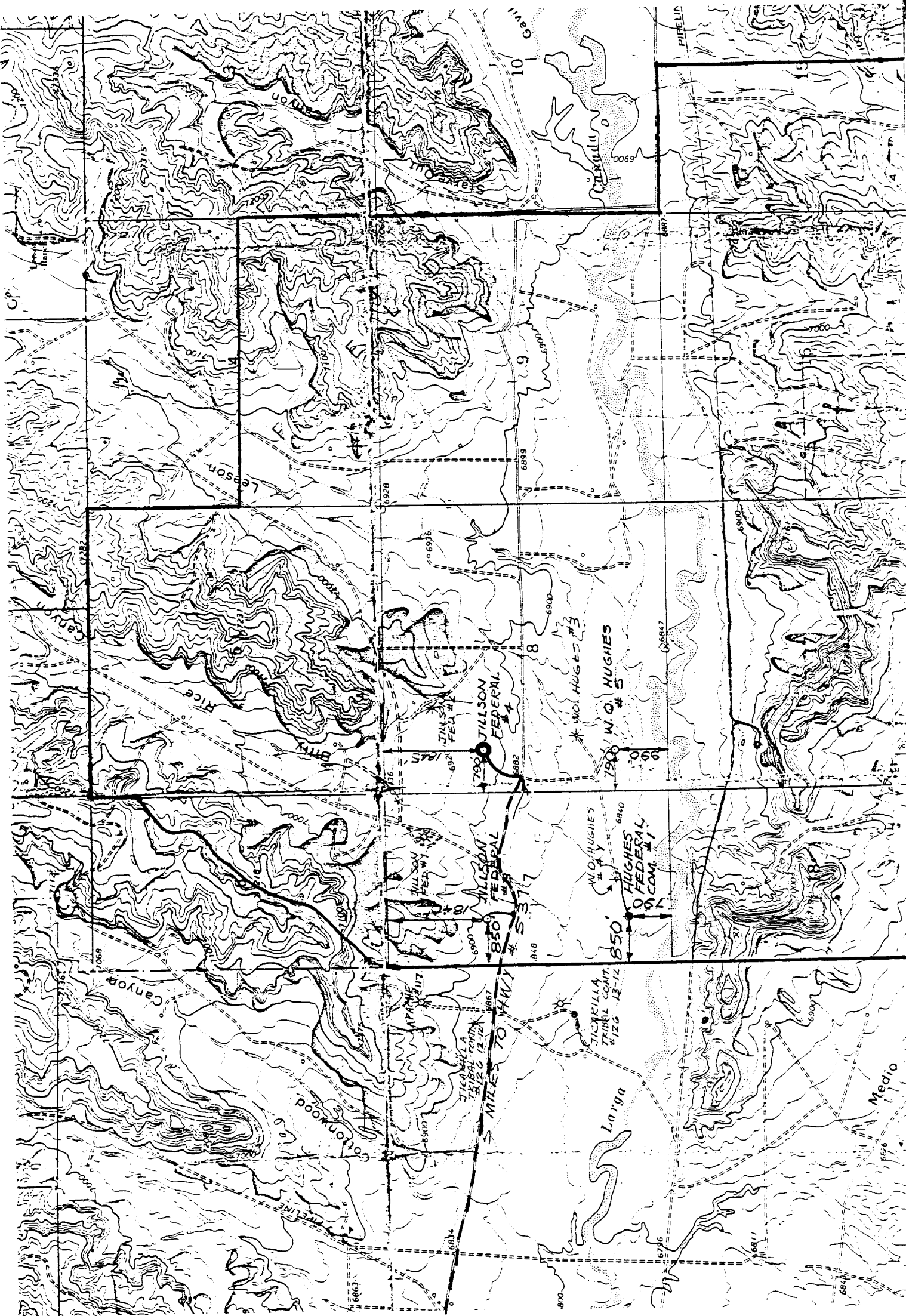
Date **March 21, 1980**

I hereby certify that the well location shown on this plat was plotted from field notes of actual surveys made by me or under my supervision, and that the same is true and correct to the best of my knowledge and belief.

March 7, 1980

Date Surveyed
H. A. Carson, Jr.
Registered Professional Engineer
and/or Land Surveyor

5063
Certificate No.



JILLSON FEDERAL #4- 1845' FNL & 790' FWL
SEC. 8, T-24-N, R-3-W
WEST LINDRITH (GALLUP DAKOTA) FIELD
RIO ARriba COUNTY, NEW MEXICO

- OIL WELL
- * GAS WELL
- PROPOSED LOCATION
- EXISTING ROAD
- PROPOSED ROAD

"MAP B"

SCALE: 1" = 2000'

RMH 3-13-80

