

UNITED STATES  
DEPARTMENT OF THE INTERIOR  
GEOLOGICAL SURVEY

## APPLICATION FOR PERMIT TO DRILL, DEEPEN, OR PLUG BACK

## 1a. TYPE OF WORK

DRILL ☒DEEPEN ☐PLUG BACK ☐

## b. TYPE OF WELL

OIL  
WELL ☒GAS  
WELL ☐OTHER ☐SINGLE  
ZONE ☐MULTIPLE  
ZONE ☐

## 2. NAME OF OPERATOR

Reading &amp; Bates Petroleum Co.

## 3. ADDRESS OF OPERATOR

1050 17th St., Suite #1910, Denver, Colorado 80265

## 4. LOCATION OF WELL (Report location clearly and in accordance with any State requirements.\*)

At surface

-800' FSL, -2030' FEL, Section 17-T24N-R3W

At proposed prod. zone

790

1900

Same

## 14. DISTANCE IN MILES AND DIRECTION FROM NEAREST TOWN OR POST OFFICE\*

Approximately 86 miles SE of Bloomfield, New Mexico

## 15. DISTANCE FROM PROPOSED\*

LOCATION TO NEAREST

PROPERTY OR LEASE LINE, FT.

(Also to nearest drlg. unit line, if any)

610'

## 18. DISTANCE FROM PROPOSED LOCATION\*

TO NEAREST WELL, DRILLING, COMPLETED,  
OR APPLIED FOR, ON THIS LEASE, FT.

None

## 16. NO. OF ACRES IN LEASE

160

## 19. PROPOSED DEPTH

7650'

17. NO. OF ACRES ASSIGNED  
TO THIS WELL

160

## 20. ROTARY OR CABLE TOOLS

Rotary

## 21. ELEVATIONS (Show whether DF, RT, GR, etc.)

7012' G.L.

## 22. APPROX. DATE WORK WILL START\*

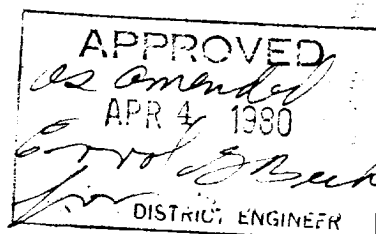
April 11, 1980

## 23.

## PROPOSED CASING AND CEMENTING PROGRAM

SIZE OF HOLE	SIZE OF CASING	WEIGHT PER FOOT	SETTING DEPTH	QUANTITY OF CEMENT
12-1/4"	8-5/8"	24#	350'	Cement to surface.
7-7/8"	4-1/2"	11.60#	7650'	900 Sks

We propose to drill the above described well to 7650' to test the Gallup and Dakota Formations. See attachments for additional APD information.



IN ABOVE SPACE DESCRIBE PROPOSED PROGRAM: If proposal is to deepen or plug back, give data on present productive zone and proposed new productive zone. If proposal is to drill or deepen directionally, give pertinent data on subsurface locations and measured and true vertical depths. Give blowout preventer program, if any.

## 24.

SIGNED

TITLE

DATE

(This space for Federal or State office use)

PERMIT NO.

APPROVAL DATE

APPROVED BY

TITLE

DATE

CONDITIONS OF APPROVAL, IF ANY:

MAR 3 1980

U. S. GEOLOGICAL SURVEY  
DURANGO, COLO.



## OIL CONSERVATION DIVISION

P. O. BOX 2088

SANTA FE, NEW MEXICO 87501

Form C-102  
Revised 10-1-78STATE OF NEW MEXICO  
ENERGY AND MINERALS DEPARTMENT

All distances must be from the outer boundaries of the Section

Operator <b>READING &amp; BATES PETROLEUM CO</b>			Lease <b>FEDERAL 17</b>		Well No. <b>1</b>
Unit Letter <b>0</b>	Section <b>17</b>	Township <b>24N</b>	Range <b>3W</b>	County <b>Rio Arriba</b>	
Actual Footage Location of Well: <b>790</b> feet from the <b>South</b> line and <b>1900</b> feet from the <b>East</b> line					
Ground Level Elev. <b>7020</b>	Producing Formation <b>X Dakota</b>		Pool <b>X Checon Dakota Associated</b>	Dedicated Acreage: <b>X 160</b> Acres	

1. Outline the acreage dedicated to the subject well by colored pencil or hachure marks on the plat below.
2. If more than one lease is dedicated to the well, outline each and identify the ownership thereof (both as to working interest and royalty).
3. If more than one lease of different ownership is dedicated to the well, have the interests of all owners been consolidated by communitization, unitization, force-pooling, etc?

☐ Yes ☐ No If answer is "yes," type of consolidation \_\_\_\_\_

If answer is "no," list the owners and tract descriptions which have actually been consolidated. (Use reverse side of this form if necessary.) \_\_\_\_\_

No allowable will be assigned to the well until all interests have been consolidated (by communitization, unitization, forced-pooling, or otherwise) or until a non-standard unit, eliminating such interests, has been approved by the Commission.

		CERTIFICATION	
		<p>I hereby certify that the information contained herein is true and complete to the best of my knowledge and belief.</p>	
Name		<p><i>[Signature]</i></p>	
Position		<p><i>[Signature]</i></p>	
Company		<p><i>[Signature]</i></p>	
Date		<p><b>X 4/14/80</b></p>	
<p>17</p>		<p>I hereby certify that the well location shown on this plat was obtained from field notes of actual survey made by me or under my supervision, and that the same is true and correct to the best of my knowledge and belief.</p>	
<p>1900'</p>		<p><b>APR 9 1980</b> <b>OIL CON. DIV.</b> <b>DIST. 3</b></p>	
<p>790'</p>		<p><b>APR 17 1980</b> <b>OIL CON. COM.</b> <b>DIST. 3</b></p>	
<p>Date Surveyed</p>		<p><b>February 18, 1980</b></p>	
<p>Registered Professional Engineer and/or Land Surveyor</p>		<p><i>[Signature]</i> <b>Fred B. Kerr Jr.</b></p>	
<p>Certificate No.</p>		<p><b>3950</b></p>	

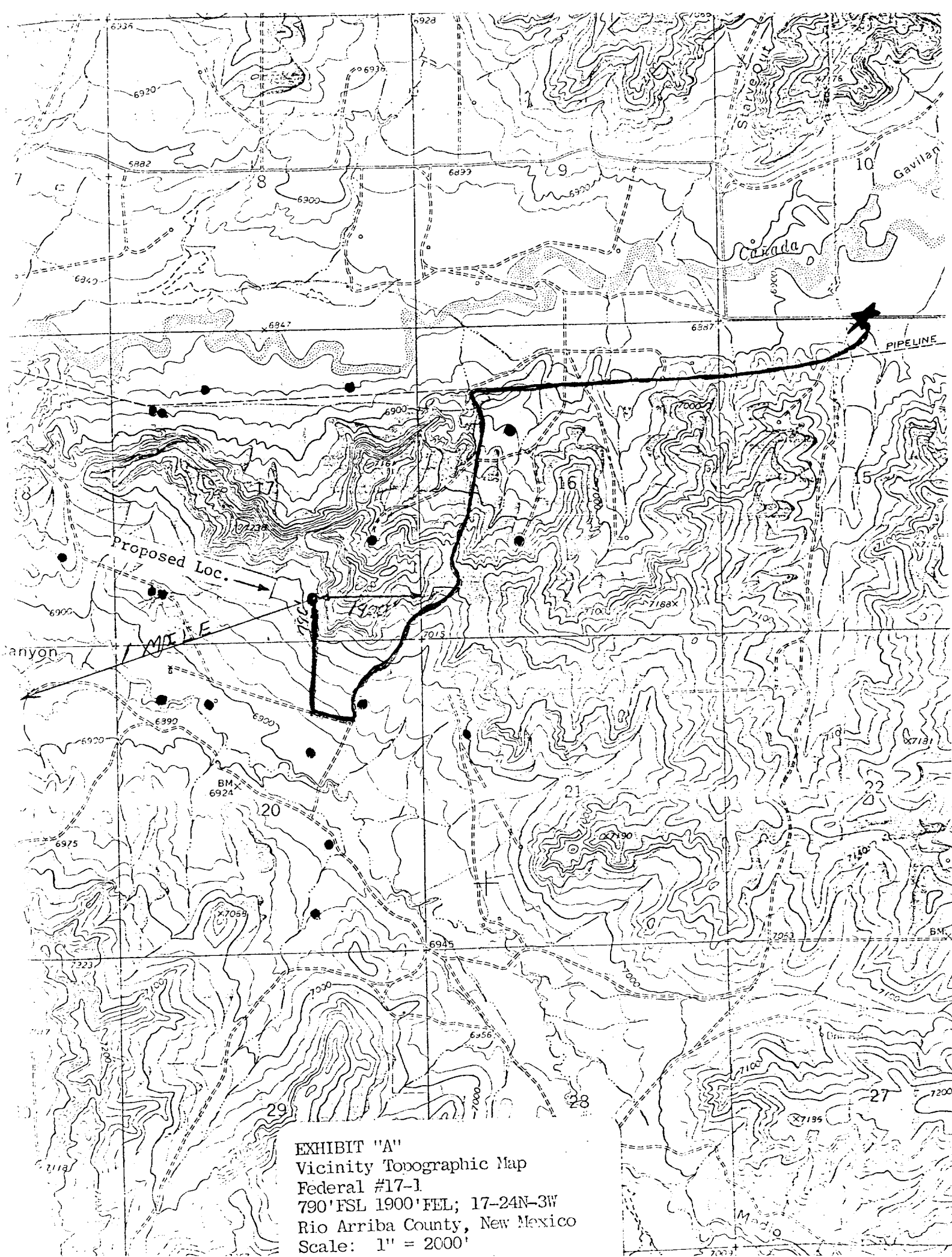


EXHIBIT "A"  
Vicinity Topographic Map  
Federal #17-1  
790' FSL 1900' FEL; 17-24N-3W  
Rio Arriba County, New Mexico  
Scale: 1" = 2000'