

| | |
|--------------------------------|---|
| STATE OF NEW MEXICO | |
| ENERGY AND MINERAL DEVELOPMENT | |
| SANTA FE | 6 |
| FILE | 1 |
| U.S.G.S. | 2 |
| LAND OFFICE | 1 |
| OPERATION | 1 |

1. A. Name of Field or Lease
STATE NEW MEXICO
B. Title Oil & Gas Lease No.
E1207

APPLICATION FOR PERMIT TO DRILL, DEEPEN, OR PLUG BACK

1a. Type of Work
DRILL DEEPEN PLUS BACK

b. Type of Well
OIL WELL GAS WELL OTHER
SINGLE ZONE MULTIPLE ZONE

2. Name of Operator
GETTY OIL COMPANY

3. Address of Operator
P.O. BOX 3360, CASPER, WY. 82602

4. Location of Well
UNIT LETTER D Lot 45 LOCATED 1450 FEET FROM THE North LINE
920 FEET FROM THE West LINE OF SEC. 2 TWP. 24N RGE. 6W

7. Well Agreement Name
FARMING 'E'

8. Name of Lease Name

9. Well No.
3 - E

10. Field and Pool, or Wildcat
Basin Dakota

12. County
Rio Arriba

13. Proposed Depth
7000

13A. Formation
Dakota

13. Rotary or C.T.

21. Conditions (Show whether DH, HI, etc.)
6429 GR

21A. Kind & Status Plug. Bond
Blanket

21B. Drilling Contractor
Not known

22. Approx. Date Work will start
10-10-80

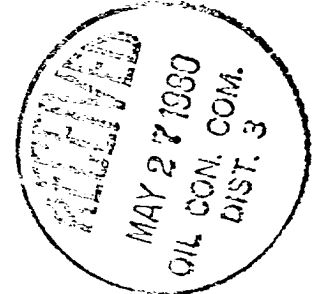
PROPOSED CASING AND CEMENT PROGRAM

| SIZE OF HOLE | SIZE OF CASING | WEIGHT PER FOOT | SETTING DEPTH | SACKS OF CEMENT | EST. TOP |
|--------------|----------------|-----------------|---------------|-----------------|----------|
| 12 1/4" | 8 5/8" | 24.0 | 300 | 180 | Surface |
| 7 7/8" | 5 1/2" | 14.0 & 15.5 | 7000 | 1208 | Surface |

We propose to drill this well to TD 7000' to test the Dakota.

APPROVAL VALID
FOR 90 DAYS UNLESS
DRILLING COMMENCED,

EXPIRES 8-25-80



IN ABOVE SPACE DESCRIBE PROPOSED PROGRAMS IF PROPOSAL IS TO DEEPEN OR PLUS BACK, GIVE DATA ON PRESENT PRODUCTIVE ZONE AND PROPOSED NEW PRODUCTIVE ZONE. GIVE SLOTCUT PREVENTER PROGRAM, IF ANY.

I hereby certify that the information above is true and complete to the best of my knowledge and belief.

Signed [Signature] Title Area Superintendent Date May 20, 1980

(This space for State Use)

APPROVED BY [Signature] TITLE SUPERVISOR DISTRICT # 3 DATE MAY 27 1980

CONDITIONS OF APPROVAL, IF ANY:

nwu 360

NEW MEXICO OIL CONSERVATION COMMISSION
WELL LOCATION AND ACREAGE DEDICATION PLAT

Form C-102
Supersedes C-128
Effective 1-1-65

All distances must be from the outer boundaries of the Section.

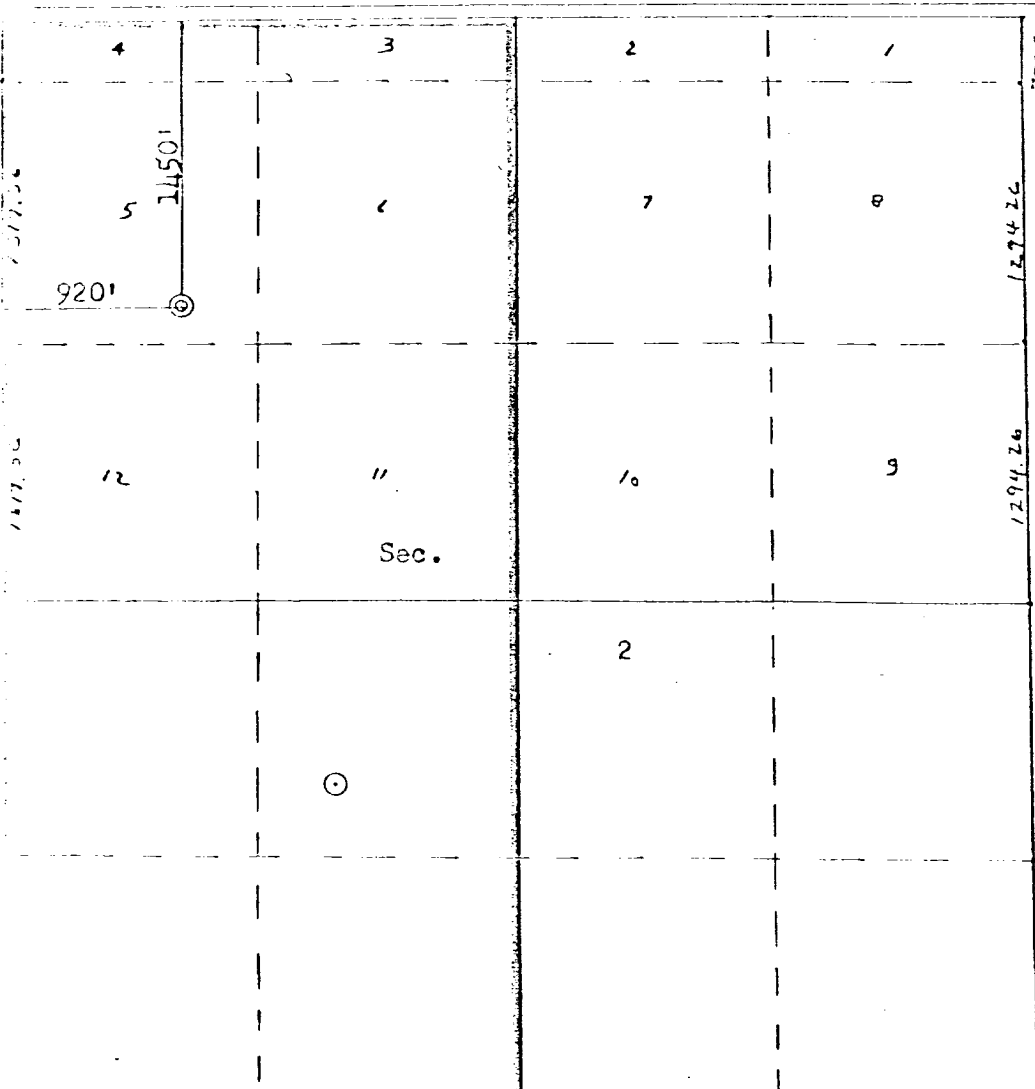
| | | | | |
|--------------------------------------|--------------------------------------|-----------------------------|--|--------------------------------|
| Operator GETTY OIL COMPANY | | Lease FARMING "E" | | Well No. 3-E |
| Unit Letter D | Section 2 | Township 24N | Range 6W | County Rio Arriba |
| Actual Footage Location of Well: | | | | |
| 1450 | feet from the North | line and | 920 | feet from the West line |
| Ground Level Elev: 6429 | Producing Formation Dakota | Pool Basin Dakota | Dedicated Acreage: W 320 341.33 Acres | |

1. Outline the acreage dedicated to the subject well by colored pencil or hatchure marks on the plat below.
2. If more than one lease is dedicated to the well, outline each and identify the ownership thereof (both as to working interest and royalty).
3. If more than one lease of different ownership is dedicated to the well, have the interests of all owners been consolidated by communitization, unitization, force-pooling, etc?

Yes No If answer is "yes," type of consolidation _____

If answer is "no," list the owners and tract descriptions which have actually been consolidated. (Use reverse side of this form if necessary.) _____

No allowable will be assigned to the well until all interests have been consolidated (by communitization, unitization, forced-pooling, or otherwise) or until a non-standard unit, eliminating such interests, has been approved by the Commission.



I hereby certify that the information contained herein is true and complete to the best of my knowledge and belief.

W E Gorb

Position
Area Superintendent

Company
Getty Oil Company

Date
May 20, 1980

I hereby certify that the well location shown on this plat was plotted from field notes of actual surveys made by me or under my supervision, and that the same is true and correct to the best of my knowledge and belief.

Date Surveyed
April 1980
Registered Professional Engineer
and Land Surveyor
Fred B. Kerr Jr.
Fred B. Kerr Jr.
Certificate No. _____
REGISTERED LAND SURVEYOR
FRED B. KERR, JR.
N.M. 1957