

UNITED STATES
DEPARTMENT OF THE INTERIOR
GEOLOGICAL SURVEY

30-039-22384

APPLICATION FOR PERMIT TO DRILL, DEEPEN, OR PLUG BACK

1A. TYPE OF WORK

DRILL ☒

DEEPEN ☐

PLUG BACK ☐

B. TYPE OF WELL

OIL
WELL ☒

GAS
WELL ☐

OTHER

SINGLE
ZONE ☒

MULTIPLE
ZONE ☐

2. NAME OF OPERATOR

Mobil Producing TX. & N.M. Inc.

3. ADDRESS OF OPERATOR

Nine Greenway Plaza, Suite 2700; Houston, Texas 77046

4. LOCATION OF WELL (Report location clearly and in accordance with any State requirements.)*

At surface
1921' FNL and 861' FWL, Sec. 21, T24N, R3W

At proposed prod. zone

Same as surface

14. DISTANCE IN MILES AND DIRECTION FROM NEAREST TOWN OR POST OFFICE*

50 miles Southeast of Farmington

15. DISTANCE FROM PROPOSED* LOCATION TO NEAREST PROPERTY OR LEASE LINE, FT. (Also to nearest drig. unit line, if any)

861' to lease line

16. NO. OF ACRES IN LEASE

2560
~~26,365.43~~

17. NO. OF ACRES ASSIGNED TO THIS WELL

160

18. DISTANCE FROM PROPOSED LOCATION* TO NEAREST WELL, DRILLING, COMPLETED, OR APPLIED FOR, ON THIS LEASE, FT.

2578'± SE
to Well #3

19. PROPOSED DEPTH

8200'

20. ROTARY OR CABLE TOOLS

ROTARY

21. ELEVATIONS (Show whether DF, RT, GR, etc.)

7015' - Ground

22. APPROX. DATE WORK WILL START*

May 30, 1980

23.

PROPOSED CASING AND CEMENTING PROGRAM

SIZE OF HOLE	SIZE OF CASING	WEIGHT PER FOOT	SETTING DEPTH	QUANTITY OF CEMENT
17-1/2"	13-3/8"	48# H-40	0-300'	1. Circulate to Surface
12-1/4"	8-5/8"	24# K-55	0-2500'	2. Circulate to Surface
	8-5/8"	32# H-40	2500-3900'	
7-7/8"	5-1/2"	15.5# K-55	0-7500'	3. Circulate to 3800'
	5-1/2"	17# K-55	7500-8200'	

Cementing Program

- Class A with 2% CaCl₂
- Class H

- Class A with 6% gel tailed in with Neat cement

Mud Program

Depth	Type of Mud
0-300'	Spud Mud
300-8200'	Fresh Water Gel

Blowout Preventer Program

See Attachment

IN ABOVE SPACE DESCRIBE PROPOSED PROGRAM: If proposal is to deepen or plug back, give data on present productive zone and proposed new productive zone. If proposal is to drill or deepen directionally, give pertinent data on subsurface locations and measured and true vertical depths. Give blowout preventer program, if any.

24.

SIGNED A. D. Bond A. D. Bond TITLE Engineering Coordinator II DATE May 9, 1980

(This space for Federal or State office use)

PERMIT NO. _____ APPROVAL DATE _____

APPROVED BY _____ DRILLING OPERATIONS AUTHORIZED ARE SUBJECT TO COMPLIANCE WITH ATTACHED "GENERAL REQUIREMENTS"

CONDITIONS OF APPROVAL, IF ANY:

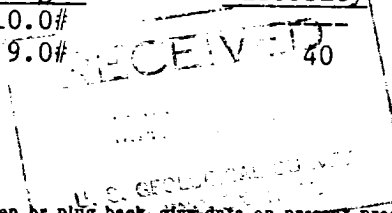
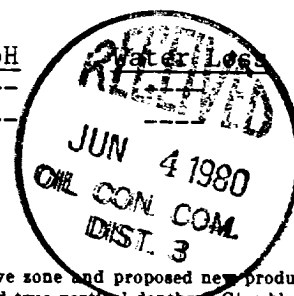
ok

James F. Lewis

*See Instructions On Reverse Side

Yellc-104 for NISL

10-1-80



NEW MEXICO OIL CONSERVATION COMMISSION
WELL LOCATION AND ACREAGE DEDICATION PLAT

Form C-102
Supersedes C-128
Effective 1-1-65

All distances must be from the outer boundaries of the Section

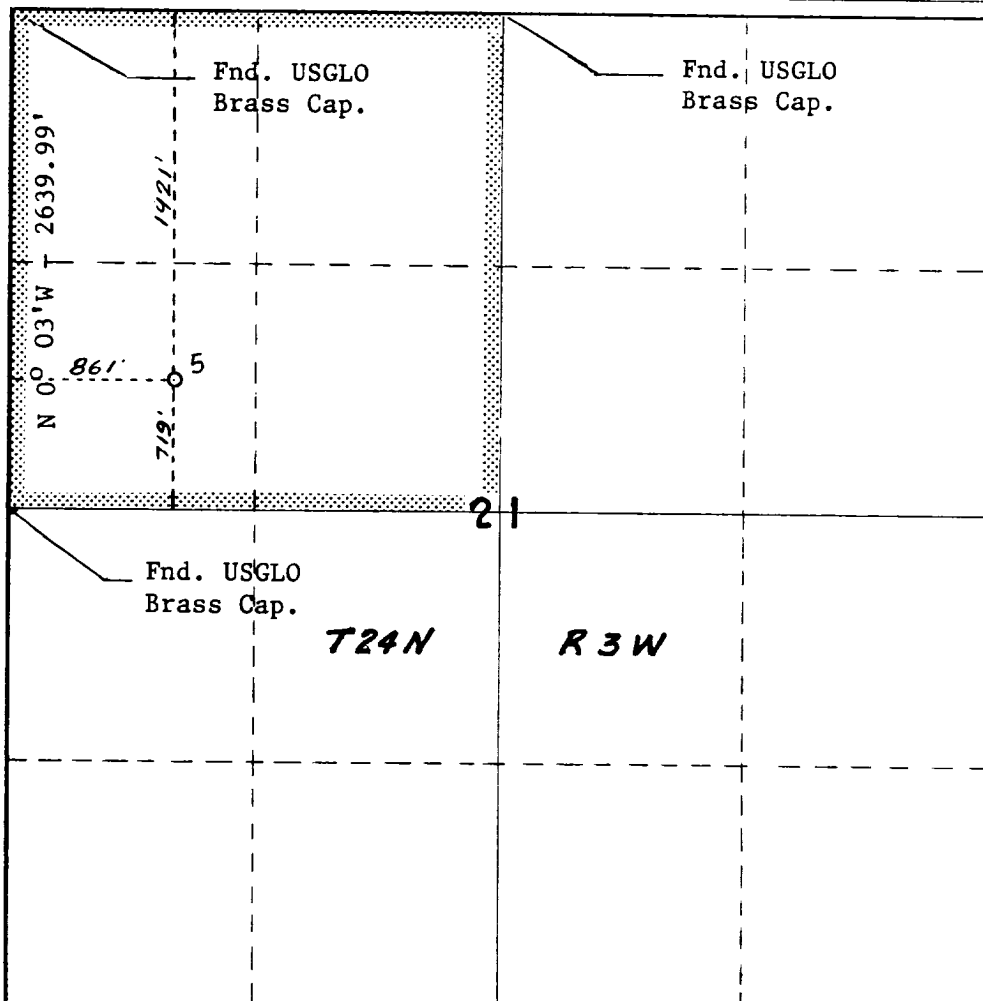
Operator Mobil Producing TX. & N.M. Inc.			Lease Lindrith B Unit		Well No. 5
Unit Letter E	Section 21	Township 24N	Range 3W	County Rio Arriba	
Actual Footage Location of Well: 921 feet from the North line and 861 feet from the West line					
Ground Level Elev. 7015'	Producing Formation Dakota		Pool Chacon-Dakota Associated		Dedicated Acreage: 160 Acres

1. Outline the acreage dedicated to the subject well by colored pencil or hachure marks on the plat below.
2. If more than one lease is dedicated to the well, outline each and identify the ownership thereof (both as to working interest and royalty).
3. If more than one lease of different ownership is dedicated to the well, have the interests of all owners been consolidated by communitization, unitization, force-pooling, etc?

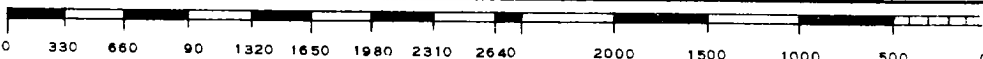
☒ Yes ☐ No If answer is "yes," type of consolidation Unitization

If answer is "no," list the owners and tract descriptions which have actually been consolidated. (Use reverse side of this form if necessary.) _____

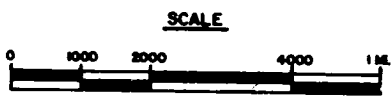
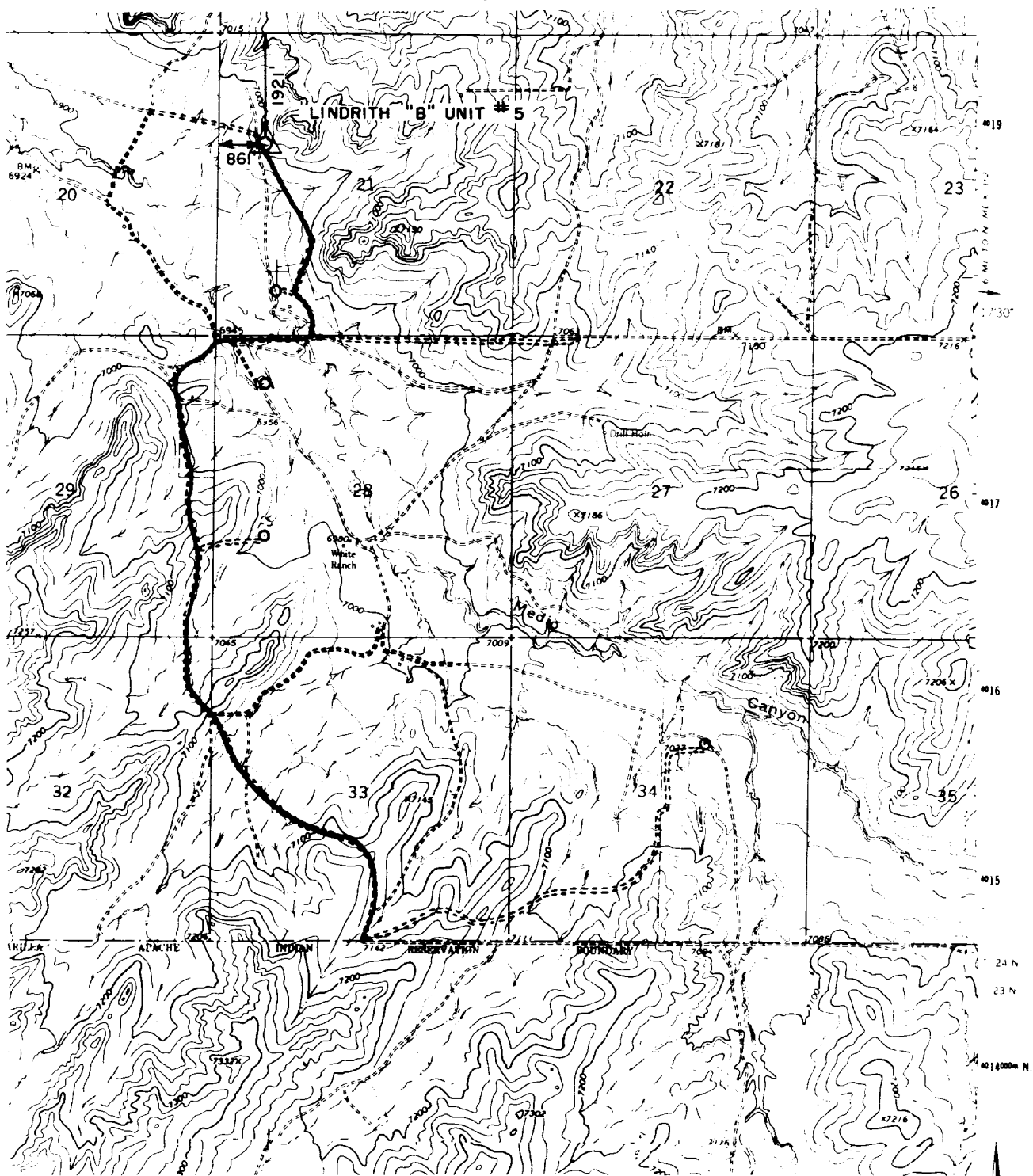
No allowable will be assigned to the well until all interests have been consolidated (by communitization, unitization, forced-pooling, or otherwise) or until a non-standard unit, eliminating such interests, has been approved by the Commission. **N 89° 50' 15" E 2635.5**



<p>CERTIFICATION</p> <p>I hereby certify that the information contained herein is true and complete to the best of my knowledge and belief.</p> <p><i>A. D. Bond</i></p>	
Name	A. D. Bond
Position	Regulatory Engineering Coordinator II
Company	Mobil Producing TX. & N.M. Inc.
Date	May 9, 1980
<p>REGISTERED LAND SURVEYOR</p> <p>I hereby certify that the well location shown on this plat was plotted from field notes of actual surveys made by me or under my supervision, and that the same are true and correct to the best of my knowledge and belief.</p> <p><i>H. A. Carson, Jr.</i></p>	
Date Surveyed	4-11-1980
Registered Professional Engineer and/or Land Surveyor	
H. A. Carson, Jr.	
Certificate No.	5063



R-3-W



<p>Mobil Producing Texas & New Mexico Inc. Houston, Texas</p> <p>LINDRITH "B" UNIT VICINITY PLAT RIO ARRIBA CO., NEW MEXICO MAP "B"</p>	<p>Scale</p>
	<p>Date</p>
	<p>Drawn</p>
	<p>Checked Approved Revised</p>