

UNITED STATES  
DEPARTMENT OF THE INTERIOR  
GEOLOGICAL SURVEY

30-039-223888

5. LEASE DESIGNATION AND SERIAL NO.

SF-080565-A

6. IF INDIAN, ALLOTTEE OR TRIBE NAME

7. UNIT AGREEMENT NAME

8. FARM OR LEASE NAME

MINEL

9. WELL NO.

#2-E

10. FIELD AND POOL, OR WILDCAT

BASIN DAKOTA

11. SEC., T., R., M., OR BLK.  
AND SURVEY OR AREA

Sec. 6 T25N-R3W

12. COUNTY OR PARISH

13. STATE  
Rio Arriba New Mexico

## 1a. TYPE OF WORK

DRILL ☒DEEPEN ☐PLUG BACK ☐

## b. TYPE OF WELL

OIL  
WELL ☐GAS  
WELL ☒

OTHER

SINGLE  
ZONE ☒MULTIPLE  
ZONE ☒

## 2. NAME OF OPERATOR

CURTIS J. LITTLE

## 3. ADDRESS OF OPERATOR

P.O. BOX 2487, FARMINGTON, N.M. 87401

## 4. LOCATION OF WELL (Report location clearly and in accordance with any State requirements.)\*

At surface

820' FNL 900' FWL

At proposed prod. zone

same

## 14. DISTANCE IN MILES AND DIRECTION FROM NEAREST TOWN OR POST OFFICE\*

12 miles NW of Lindrith

## 15. DISTANCE FROM PROPOSED\*

LOCATION TO NEAREST

PROPERTY OR LEASE LINE, FT.

(Also to nearest drlg. unit line, if any)

820

## 16. NO. OF ACRES IN LEASE

1015.18 855.18 2

17. NO. OF ACRES ASSIGNED  
TO THIS WELL

W 339.75

## 18. DISTANCE FROM PROPOSED LOCATION\*

TO NEAREST WELL, DRILLING, COMPLETED,  
OR APPLIED FOR, ON THIS LEASE, FT.

200' P.C.

## 19. PROPOSED DEPTH

8175

## 20. ROTARY OR CABLE TOOLS

rotary

## 21. ELEVATIONS (Show whether DF, RT, GR, etc.)

7159-GR.

## 22. APPROX. DATE WORK WILL START\*

August 15, 1980

## 23.

## PROPOSED CASING AND CEMENTING PROGRAM

SIZE OF HOLE	SIZE OF CASING	WEIGHT PER FOOT	SETTING DEPTH	QUANTITY OF CEMENT
12-1/4	10-3/4	40.5	200'	200 SX
9-3/4	7-5/8	26.4	6075'	400 SX COVER OJO ALAMO
6-1/4	4-1/2	11.6	5975-8175'	300 SX

Propose to drill with rotary and set intermediate csg with 2 stage cement with stage-collared at base of the Pictured Cliffs Formation. Gas drilling is proposed to base of Dakota formation where 4-1/2" liner to be set. Mesaverde and Dakota will be completed if productive. Gas from this well is committed.

Estimated formation tops:	Ojo Alamo	1875	Point Lookout	5875
	Fruitland	3575	Gallup	6875
	Pictured Cliffs	3675	Greenhorn	7825
	Lewis	3725	Dakota	7925
	Cliff House	5575	T.D.	8175

IN ABOVE SPACE DESCRIBE PROPOSED PROGRAM: If proposal is to deepen or plug back, give data on present productive zone and proposed new productive zone. If proposal is to drill or deepen directionally, give pertinent data on subsurface locations and measured and true vertical depths. Give blowout preventer program, if any.

24.

SIGNED

Curtis J. Little

TITLE

Operator

DATE

May 12, 1980

(This space for Federal or State office use)

PERMIT NO.

APPROVAL DATE

APPROVED BY

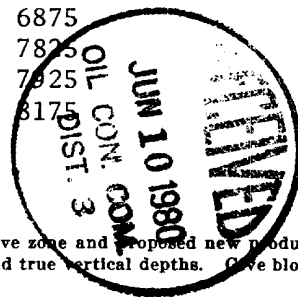
TITLE

DATE

CONDITIONS OF APPROVAL, IF ANY:

\*See Instructions On Reverse Side

NMOC



All distances must be from the outer boundaries of the Section.

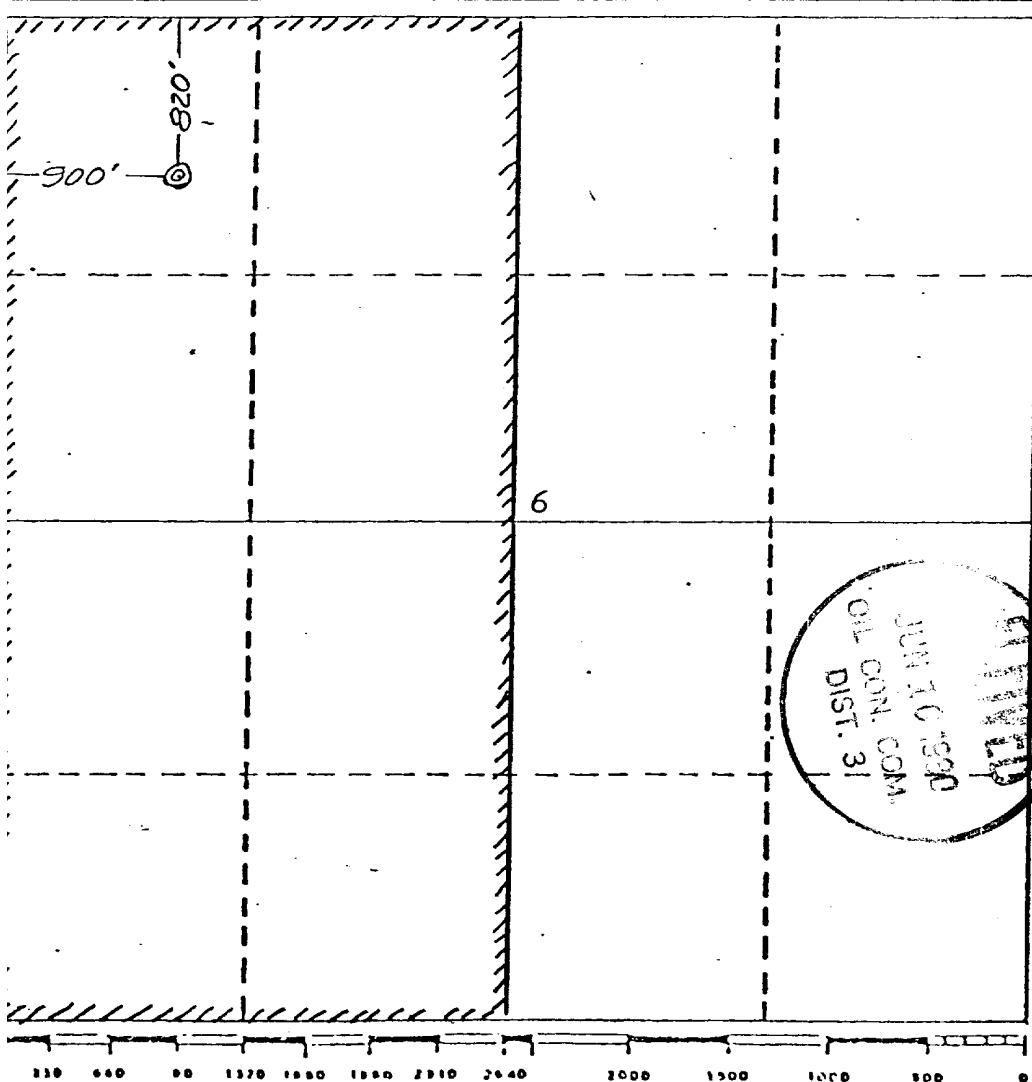
Operator <b>CURTIS LITTLE</b>		Lease <b>MINEL</b>		Well No. <b>#2-E</b>	
Unit Letter <b>D</b>	Section <b>6</b>	Township <b>25 NORTH</b>	Range <b>3 WEST</b>	County <b>RIO ARriba</b>	
Actual Footage Location of Well: <b>820</b> feet from the <b>NORTH</b> line and <b>900</b> feet from the <b>WEST</b> line					
Ground Level Elev. <b>7159</b>	Producing Formation <b>DAKOTA</b>		Pool <b>BASIN DAKOTA</b>		Dedicated Acreage <b>340 W 339.75</b> acres

1. Outline the acreage dedicated to the subject well by colored pencil or hatchure marks on the plat below.
2. If more than one lease is dedicated to the well, outline each and identify the ownership thereof (both as to working interest and royalty).
3. If more than one lease of different ownership is dedicated to the well, have the interests of all owners been consolidated by communitization, unitization, force-pooling, etc?

☐ Yes ☐ No If answer is "yes," type of consolidation \_\_\_\_\_

If answer is "no," list the owners and tract descriptions which have actually been consolidated. (Use reverse side of this form if necessary.) \_\_\_\_\_

No allowable will be assigned to the well until all interests have been consolidated (by communitization, unitization, forced-pooling, or otherwise) or until a non-standard unit, eliminating such interests, has been approved by the Division.



## CERTIFICATION

I hereby certify that the information contained herein is true and complete to the best of my knowledge and belief.

Name  
**CURTIS J. LITTLE**

Position  
**OPERATOR**

Company  
**CURTIS J. LITTLE**

Date  
**MAY 12, 1980**

I hereby certify that the location shown on this plat was plotted from field notes made by me or under my supervision and that it is correct to the best of my knowledge and belief.

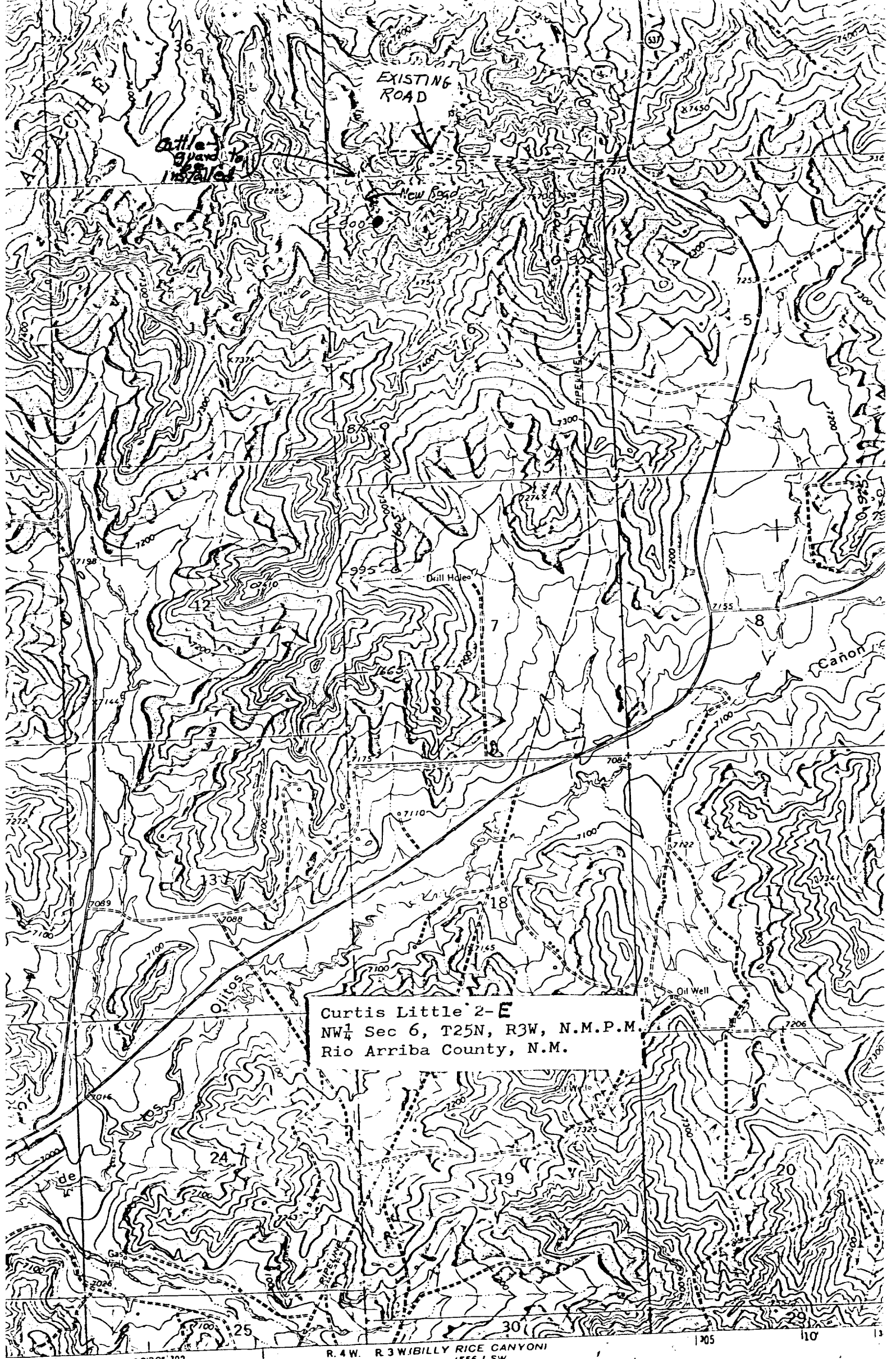
REGISTERED PROFESSIONAL ENGINEER & LAND SURVEYOR  
JAMES P. LEESE  
NO. 1463  
STATE OF NEW MEXICO

Date Surveyed  
**April 16, 1980**

Registered Professional Engineer and Land Surveyor

**James P. Leese**  
James P. Leese

Certificate No.  
**1463**

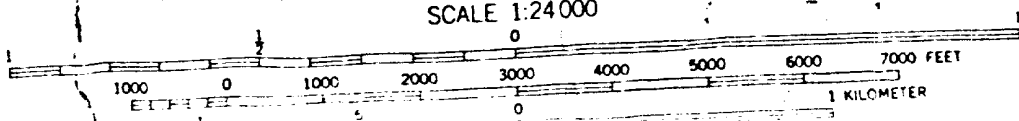


Curtis Little 2-E  
NW $\frac{1}{4}$  Sec 6, T25N, R3W, N.M.P.M.  
Rio Arriba County, N.M.

1230' 302

R. 4 W. R. 3 W. BILLY RICE CANYON  
4556 1 SW

SCALE 1:24 000




1 MILE

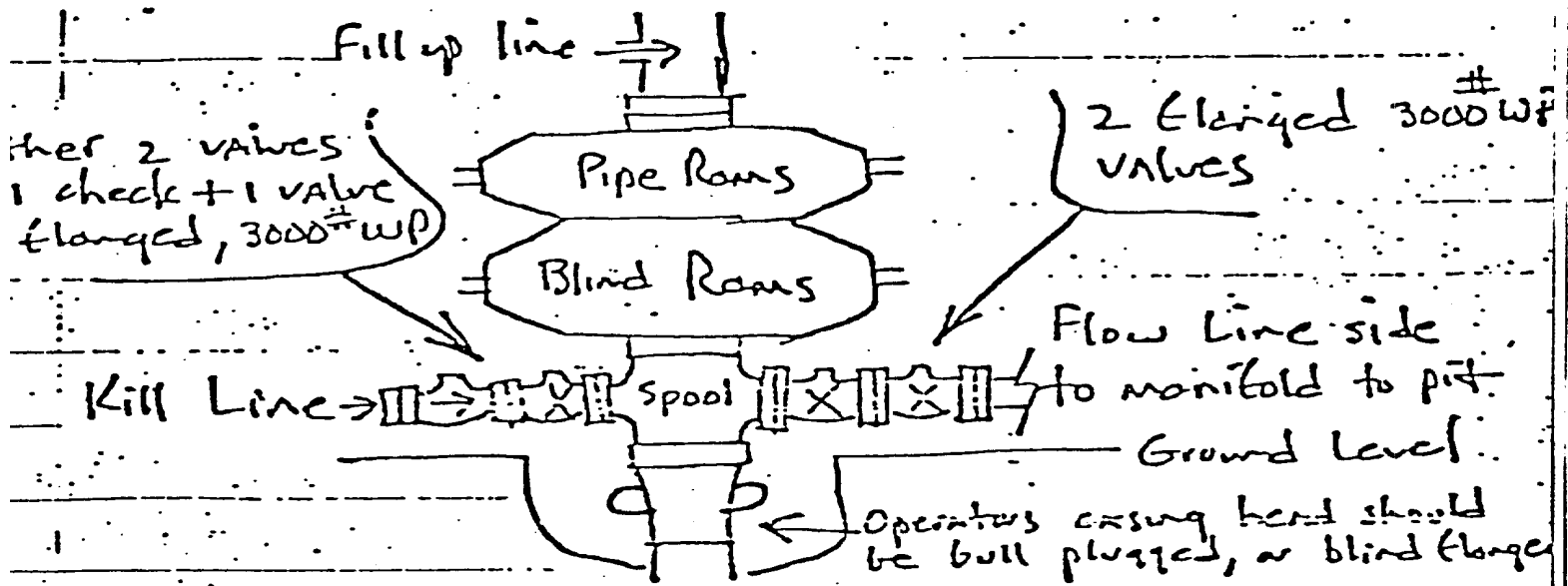
WELL CONTROL PLAN

CURTIS J. LITTLE  
No. 2-E Minel  
820'FNL 900'FWL  
NW NW Section 6 T-25-N R-3-W  
Rio Arriba County, New Mexico

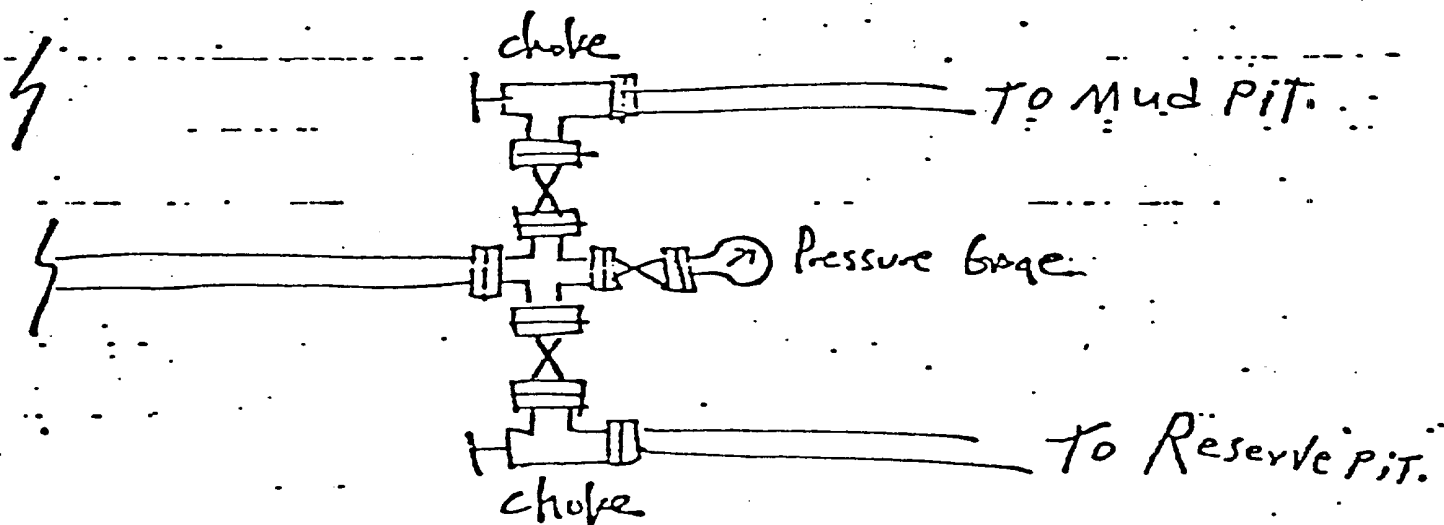
1. Surface Casing: 10-3/4" 40.5#/ft. set at 200' and cemented with pump and plug method back to surface.
2. Casinghead Flange: 10-3/4" series 900, 3000 psi WP equivalent casinghead with two 2" 1500 psi L.P. outlets.
3. Blowout Preventor: a 10" 3000 psig W.P. double gate hydraulic Shaffer BOP (or equivalent) with drill pipe rams and blind rams. All fill, kill and choke lines will be minimum of 2" 2000 psi working pressure. The rams will be closed daily and checked for proper operation.
4. Auxillary Equipment: a) Drill pipe floats will be allowed at contractor's discretion; b) Visual and manual monitoring of mud system will be maintained.
5. Anticipated bottom hole pressure is less than 3200 psi at 8250'. Gradient of .277 psi/ft. 9.2 lb. mud program gives 3940 psi hydrostatic head.
6. Well will be drilled with water base mud system with 9.0-9.4 ppg weight 35-45 seconds viscosity to T.D.

  
Curtis J. Little

# BLOWOUT PREVENTOR EQUIPMENT



## Detail Flow Line Side (manifold) (All Gittings flanged & WP at 3000<sup>#</sup>)



## PLAN OF DEVELOPMENT

CURTIS J. LITTLE  
No. 2-E Minel  
820'FNL 900'FWL  
NW NW Section 6 T-25-N R-3-W  
Rio Arriba County, New Mexico

1. Existing Roads (see enclosed topo map).
2. Planned access road: will use existing access road approximately 10' in width from pavement to Jicarilla Fence where it is requested to install a cattleguard and construct 900 feet of road to the location; constructed to prevent erosion (see proposed road on topo map).
3. Location of tank battery and production facilities: if this well is productive, it would be gas; therefore, the facilities would be the wellhead, tanks for produced water and condensate, if any, separator and gas line to the well. The tanks and separator would be set within 150' of the well and on location and the gas line would run adjacent and parallel to road.
5. Location and type of water supply: Water will be hauled by truck from private water supply in the area.
6. Source of construction materials: all construction material such as gravel, sand, timbers, etc. will be purchased and hauled to the location. No water, sand or gravel will be used from this land.
7. Methods for handling waste disposal:
  - 1) Cuttings will be buried 3' below the surface.
  - 2) Drilling fluids will be left in a fenced, open pit to evaporate.
  - 3) Produced oil or condensate (if any) will be stored in a tank.
  - 4) Portable toilet to be provided.
  - 5) Trash will be burned in burn pit.
  - 6) After pit area is sufficiently dry, cuttings will be pushed into pit and sub-soil will be placed on any remaining fluid and cuttings, then top soil, if any, will be placed over both pit and location area.
8. Ancillary facilities: No camps or airstrips will be used.
9. Wellsite layout: Top soil, if any, will be stockpiled and reused. Pits will not be lined.
10. Plans for restoration of surface: upon completion of well, all pits will be backfilled and top soil replaced and recontoured back to the original terrain. Pits will be backfilled as soon as they evaporate enough to permit such work. To protect livestock or wild game, pits will be fenced, and maintained until

Plan of Development

#2-E Minel

Page 2

---

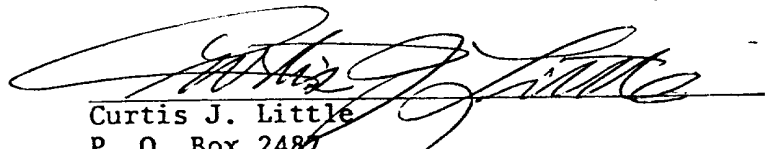
clean-up operations are commenced. Should oil accumulate on the pit, it will be removed and buried 6' deep or overhead flagging will be employed to protect wildlife.

11. Other information:

- 1) Topography - drill site and access low valley profile.
  - 2) Vegetation - sparse grass and sagebrush with moderate growth of pinon trees.
  - 3) Land use - land is used for grazing with no reservoir or water on this site.
- There are no known archeological, cultural, or historical sites on the site.

12. Lessee's or Operator's representative: CURTIS J. LITTLE Home: 327-6673  
Offc: 327-6176

13. I hereby certify that I, or persons under my direct supervision, have inspected the proposed drillsite and access rout; that I am familiar with the conditions which presently exist; that the statements made in this plan are, to the best of my knowledge, true and correct; and, that the work associated with the operations proposed herein will be performed by Four Corners Drilling Company and its contractors and sub-contractors in conformity with this plan and the terms and conditions under which it is proposed.



Curtis J. Little  
P. O. Box 2487  
Farmington, New Mexico 87401

# FOUR CORNERS DRILLING CO.

P. O. BOX 1067  
702 E. BROADWAY  
FARMINGTON, NEW MEXICO 87401

TELEPHONE: (505) 327-1122

