

UNITED STATES
DEPARTMENT OF THE INTERIOR
GEOLOGICAL SURVEY

APPLICATION FOR PERMIT TO DRILL, DEEPEN, OR PLUG BACK

1a. TYPE OF WORK

DRILL ☒DEEPEN ☐PLUG BACK ☐

b. TYPE OF WELL

OIL
WELL ☒GAS
WELL ☐

OTHER

SINGLE
ZONE ☒MULTIPLE
ZONE ☐

2. NAME OF OPERATOR

Mobil Producing TX. & N.M. Inc.

3. ADDRESS OF OPERATOR

Nine Greenway Plaza, Suite 2700; Houston, Texas 77046

4. LOCATION OF WELL (Report location clearly and in accordance with any State requirements.)

1810' FSL & 1810' FEL, Sec. 34, T24N, R3W
At proposed prod. zone

Same as surface

14. DISTANCE IN MILES AND DIRECTION FROM NEAREST TOWN OR POST OFFICE*

50 miles Southeast of Farmington

15. DISTANCE FROM PROPOSED* LOCATION TO NEAREST

PROPERTY OR LEASE LINE, FT.
(Also to nearest drig. unit line, if any)

790' to lease line

16. NO. OF ACRES IN LEASE

26.365.43

18. DISTANCE FROM PROPOSED LOCATION* TO NEAREST WELL, DRILLING, COMPLETED, OR APPLIED FOR, ON THIS LEASE, FT.

1630.3' North
to Well #4

19. PROPOSED DEPTH

8200'

17. NO. OF ACRES ASSIGNED TO THIS WELL

160

20. ROTARY OR CABLE TOOLS

Rotary

21. ELEVATIONS (Show whether DF, RT, GR, etc.)

7074' - Ground

22. APPROX. DATE WORK WILL START*

June 15, 1980

23. PROPOSED CASING AND CEMENTING PROGRAM

SIZE OF HOLE	SIZE OF CASING	WEIGHT PER FOOT	SETTING DEPTH	QUANTITY OF CEMENT
17-1/2"	13-3/8"	48# H-40	0-300'	1. Circulate to Surface
12-1/4"	8-5/8"	24# K-55	0-2500'	2. Circulate to Surface
	8-5/8"	32# H-40	2500-3900'	
7-7/8"	5-1/2"	15.5# K-55	0-7500'	3. Circulate to 3800'
	5-1/2"	17# K-55	7500-8200'	

Cementing Program

1. Class A with 2% CaCl₂
3. Class H

2. Class gel tailed in with Neat cement

Mud Program

Depth	Type of Mud	Weight	Viscosity	pH	Water Loss
0-300'	Spud Mud	10.0#	---	---	---
300-8200'	Fresh Water Gel	9.0#	40	---	---

Blowout Preventer Program

See Attachment

Logging Program: Type _____ Depth _____
IES 3900'+ to T.D.
Neutron-Density Surf. to T.D.

IN ABOVE SPACE DESCRIBE PROPOSED PROGRAM: If proposal is to deepen or plug back, give data on present productive zone and proposed new productive zone. If proposal is to drill or deepen directionally, give pertinent data on subsurface locations and measured and true vertical depths. Give blowout preventer program, if any.

24.

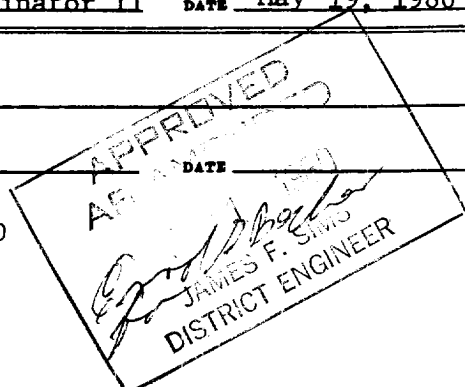
SIGNED A. D. Bond A. D. Bond TITLE Engineering Coordinator II DATE May 19, 1980

(This space for Federal or State office use)

PERMIT NO. _____ APPROVAL DATE _____

APPROVED BY _____ TITLE _____
CONDITIONS OF APPROVAL, IF ANY:DRILLING OPERATIONS AND RELATED ARE
SURFACE OPERATIONS WITH ATTACHED
"GENERAL REQUIREMENTS"

*See Instructions On Reverse Side



**NEW MEXICO OIL CONSERVATION COMMISSION
WELL LOCATION AND ACREAGE DEDICATION PLAT**

Form C-102
Supersedes C-128
Effective 1-1-65

All distances must be from the outer boundaries of the Section.

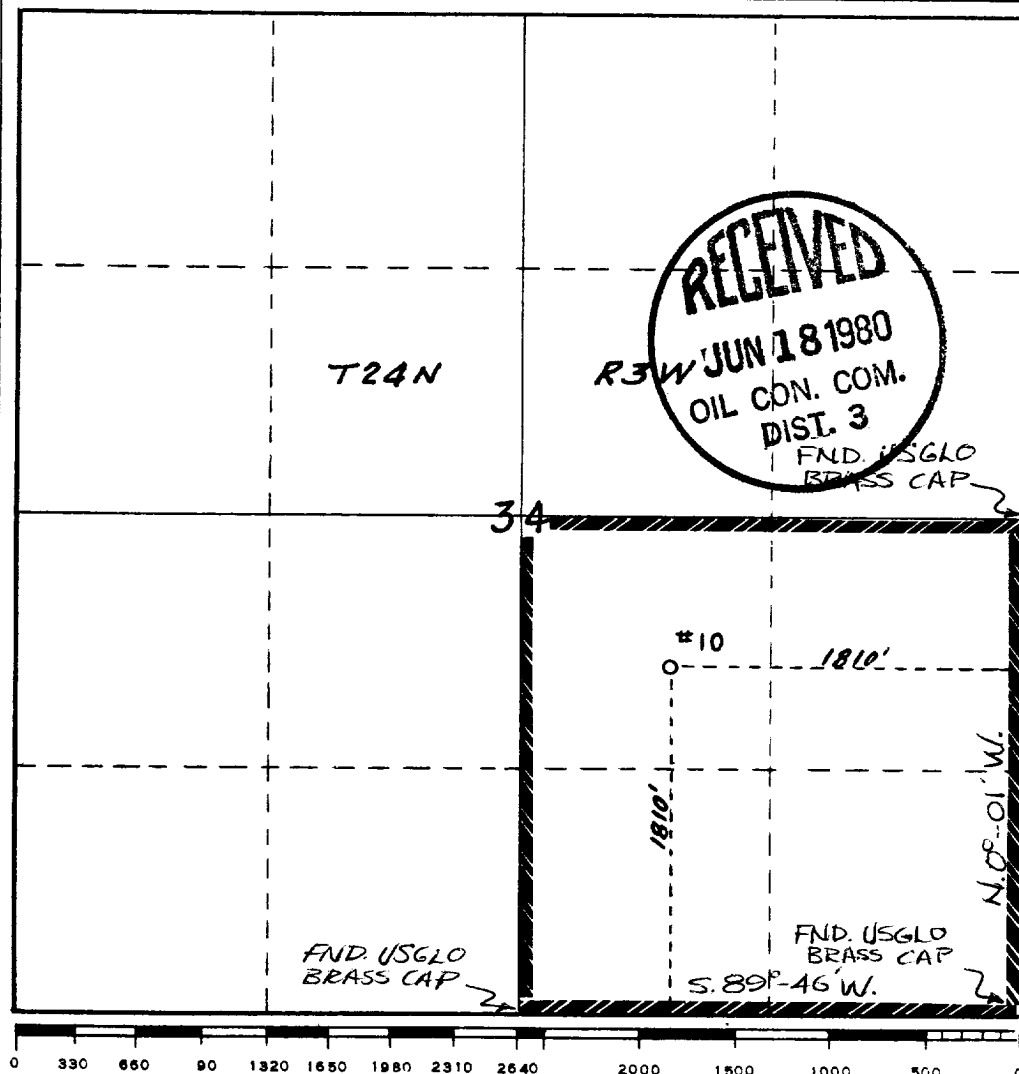
Operator Mobil Producing TX. & N.M. Inc.			Lease Lindrith B Unit		Well No. 10
Unit Letter J	Section 34	Township 24N	Range 3W	County Rio Arriba	
Actual Footage Location of Well: <div style="display: flex; justify-content: space-between;"> 1810 feet from the South line and 1810 feet from the East line </div>					
Ground Level Elev. 7074'	Producing Formation Dakota	Pool Chacon-Dakota Associated		Dedicated Acreage: 160 Acres	

1. Outline the acreage dedicated to the subject well by colored pencil or hachure marks on the plat below.
2. If more than one lease is dedicated to the well, outline each and identify the ownership thereof (both as to working interest and royalty).
3. If more than one lease of different ownership is dedicated to the well, have the interests of all owners been consolidated by communitization, unitization, force-pooling, etc?

☒ Yes ☐ No If answer is "yes," type of consolidation **Unitization**

If answer is "no," list the owners and tract descriptions which have actually been consolidated. (Use reverse side of this form if necessary.) _____

No allowable will be assigned to the well until all interests have been consolidated (by communitization, unitization, forced-pooling, or otherwise) or until a non-standard unit, eliminating such interests, has been approved by the Commission.



CERTIFICATION

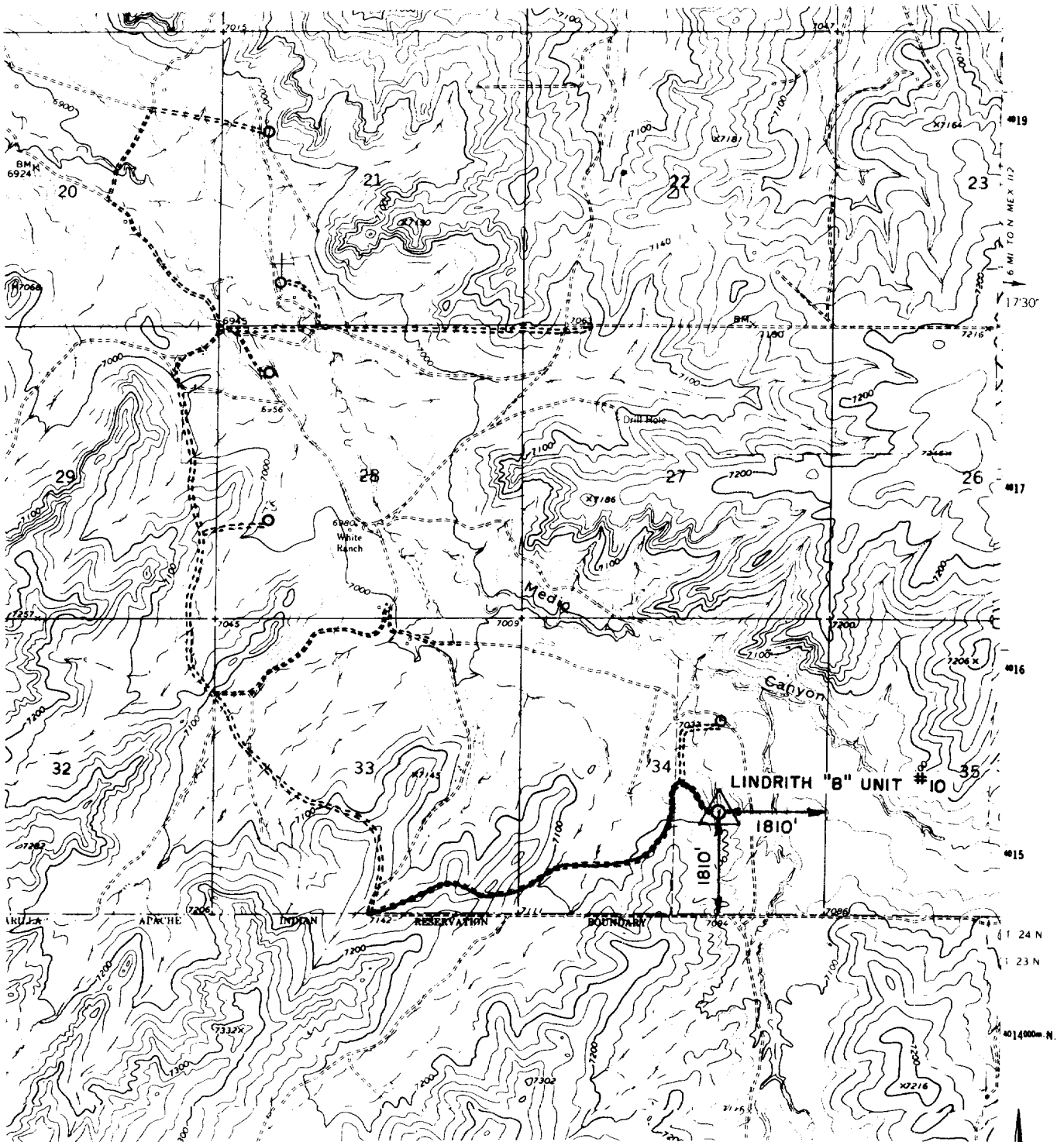
I hereby certify that the information contained herein is true and complete to the best of my knowledge and belief.

A. D. Bond
 Name
A. D. Bond
 Position **Regulatory Engineering Coordinator II**
 Company **Mobil Producing TX. & N.M. Inc.**
 Date
May 19, 1980

H. A. Carson, Jr.
 I hereby certify that the well location shown on this plat was plotted from field notes of actual survey made by me or under my supervision, and that the same is true and correct to the best of my knowledge and belief.
REGISTERED LAND SURVEYOR
No. 5063
NEW MEXICO
H. A. CARSON, JR.

H. A. Carson, Jr.
 Date Surveyed
April 11, 1980
 Registered Professional Engineer and/or Land Surveyor
H. A. Carson, Jr.
 Certificate No.
5063

R-3-W



SCALE



**Mobil Producing
Texas & New Mexico Inc.
Houston, Texas**

**LINDRITH "B" UNIT
VICINITY PLAT
RIO ARRIBA CO., NEW MEXICO
MAP "B"**

Scale
Date 4-17-80
Drawn J.J.
Checked
Approved
Revised