

NO. OF COPIES RECEIVED	
DISTRIBUTION	
SANTA FE	
FILE	
U.S.G.S.	
LAND OFFICE	
OPERATOR	

NEW MEXICO OIL CONSERVATION COMMISSION

Form C-101
Revised 1-1-65

5A. Indicate Type of Lease	
STATE <input type="checkbox"/>	FEE <input checked="" type="checkbox"/>
5. State Oil & Gas Lease No.	

APPLICATION FOR PERMIT TO DRILL, DEEPEN, OR PLUG BACK

1a. Type of Work		7. Unit Agreement Name	
b. Type of Well OIL WELL <input type="checkbox"/> GAS WELL <input checked="" type="checkbox"/> OTHER <input type="checkbox"/>		8. Farm or Lease Name Johnson	
2. Name of Operator Southland Royalty Company		9. Well No. #1	
3. Address of Operator P. O. Drawer 570, Farmington, NM 87401		10. Field and Pool, or Wildcat Blanco Mesa Verde EXT / Basin Dakota	
4. Location of Well UNIT LETTER I LOCATED 1590' FEET FROM THE South LINE AND 1000' FEET FROM THE East LINE OF SEC. 7 TWP. 25N RGE. 3W NMPM		12. County Rio Arriba	
19. Proposed Depth 8103'		19A. Formation Dakota/Mesa Verde Rotary	
21. Elevations (Show whether DF, RT, etc.) 7127' GR		22. Approx. Date Work will start June 30, 1980	

PROPOSED CASING AND CEMENT PROGRAM

SIZE OF HOLE	SIZE OF CASING	WEIGHT PER FOOT	SETTING DEPTH	SACKS OF CEMENT	EST. TOP
12 1/4"	9 5/8"	32.30#	200'	110 sacks	Circ. to Surface
7 7/8"	5 1/2"	15.5#	7000'	670 sacks	Cover Ojo Alamo
	5 1/2"	17.0#	7000'-8103'	-----	-----

Surface formation is San Jose.

Top of Ojo Alamo sand is at 2011'.

Top of Pictured Cliffs sand is at 3562'.

Fresh water mud will be used to drill from surface to Total Depth.

It is anticipated that an IES, GR-Density, and SNP log will be run from Total Depth to base of surface pipe.

No abnormal pressures or poisonous gases are anticipated in this well.

It is expected that this well will be drilled before August 31, 1980. This depends on time required for approvals, rig availability and the weather.

Gas is dedicated.

APPROVAL VALID
FOR 90 DAYS UNLESS
DRILLING COMMENCED,

EXPIRES 9-21-80

IN ABOVE SPACE DESCRIBE PROPOSED PROGRAM: IF PROPOSAL IS TO DEEPEN OR PLUG BACK, GIVE DATA ON PRESENT PRODUCTION ZONE AND PROPOSED NEW PRODUCTION ZONE. GIVE BLOWOUT PREVENTER PROGRAM, IF ANY.

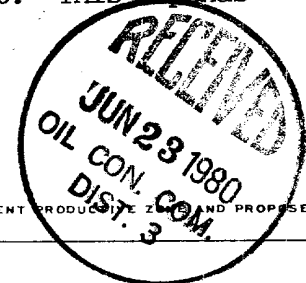
I hereby certify that the information above is true and complete to the best of my knowledge and belief.

Signed Walter C. Lawrence Title District Engineer Date June 16, 1980

(This space for State Use)

APPROVED BY Frank J. Chazy TITLE SUPERVISOR DISTRICT #3 DATE JUN 23 1980

CONDITIONS OF APPROVAL, IF ANY:

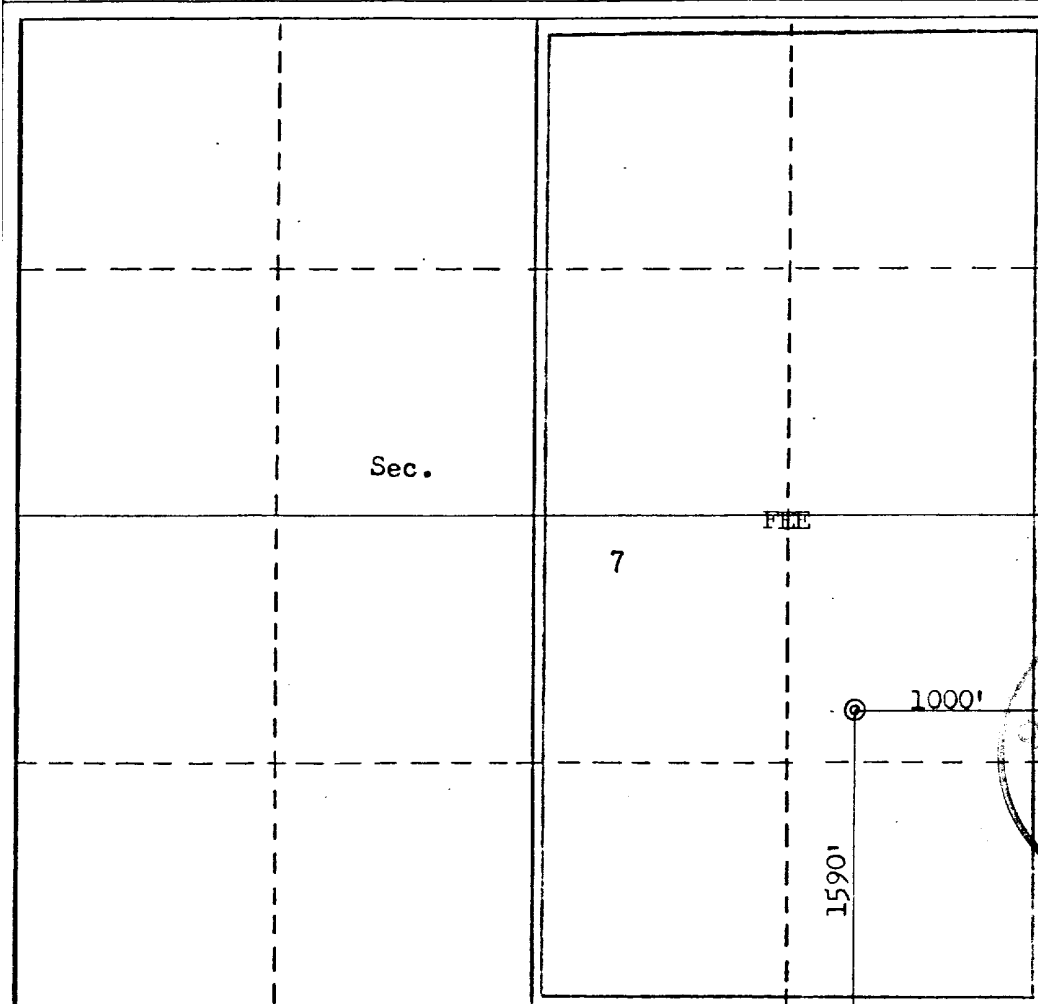


OIL CONSERVATION DIVISION

STATE OF NEW MEXICO
ENERGY AND MINERALS DEPARTMENTP. O. BOX 2088
SANTA FE, NEW MEXICO 87501Form C-107
Revised 10-1-78

All distances must be from the outer boundaries of the Section.

Operator SOUTHLAND ROYALTY COMPANY			Lease JOHNSON		Well No. 1
Unit Letter I	Section 7	Township 25N	Range 3W	County Rio Arriba	
Actual Footage Location of Well: 1590 feet from the South line and 1000 feet from the East line					
Ground Level Elev. 7127	Producing Formation Mesa Verde - Dakota		Pool Blanco - Basin <i>MV ext Dakota</i>		Dedicated Acreage: E 320 Acres
<p>1. Outline the acreage dedicated to the subject well by colored pencil or hatchure marks on the plat below.</p> <p>2. If more than one lease is dedicated to the well, outline each and identify the ownership thereof (both as to working interest and royalty).</p> <p>3. If more than one lease of different ownership is dedicated to the well, have the interests of all owners been consolidated by communitization, unitization, force-pooling, etc?</p> <p><input type="checkbox"/> Yes <input type="checkbox"/> No If answer is "yes," type of consolidation _____</p> <p>If answer is "no," list the owners and tract descriptions which have actually been consolidated. (Use reverse side of this form if necessary.) _____</p> <p>No allowable will be assigned to the well until all interests have been consolidated (by communitization, unitization, forced-pooling, or otherwise) or until a non-standard unit, eliminating such interests, has been approved by the Commission.</p>					



CERTIFICATION

I hereby certify that the information contained herein is true and complete to the best of my knowledge and belief.

Name
Curtis C. Parsons
Position
District Engineer
Company
Southland Royalty Company
Date
June 16, 1980

I hereby certify that the well location shown on this plat was plotted from field notes of actual surveys made by me or under my supervision, and that the same is true and correct to the best of my knowledge and belief.

Date Surveyed
May 22, 1980
Registered Professional Engineer
and/or Land Surveyor
Fred B. Kerr Jr.

Certificate No.
3950

SOUTHLAND ROYALTY COMPANY - DRILLING SCHEDULE

J O H N S O N # 1

1590' FSL & 1000' FEL

Section 7, T25N, R3W

Rio Arriba, Cnty, NM

Field: Blanco Mesa Verde - Basin Dakota

Elevation: 7127' GR

Geology: Formation Tops -

Ojo Alamo	2011'	Pt. Lookout	5773'
Kirtland	3361'	Gallup	6803'
Fruitland	3464'	Greenhorn	7734'
Pictured Cliffs	3562'	Graneros	7795'
Cliff House	5273'	Dakota	7943'
		Total Depth	8103'

Logging Program: IES, GR-Density, SNP from Total Depth to base of surface pipe.

Drilling:

Contractor:

Tool Pusher:

SRC Representative:

SRC Answering Svc: 325-1841

Dispatch Number: 325-7391

Mud Program: Magcobar - water and benex thru Pictured Cliffs into Lewis until hole gets tight or loss of circulation occurs. Mud up and carry LCM as necessary (est. 5%) to Total Depth. Bring viscosity to 50-60 sec. for logging.

Materials: Casing -

<u>Hole Size</u>	<u>Depth</u>	<u>Casing Size</u>	<u>Weight and Grade</u>
12 1/4"	200'	9 5/8"	32.30#, H-40, ST & C
7 7/8"	7000'	5 1/2"	15.5#, K-55, ST & C
	7000'-8103'	5 1/2"	17.0#, K-55, ST & C

Float Equipment:

9 5/8" surface casing: Pathfinder type "A" guide shoe.

5 1/2" production casing: Pathfinder type "A" guide shoe. Self-fill flapper type float collar run one joint above shoe. Five bow-type centralizers (run every other joint above shoe). Dowell stage tools at 6100' and 3760' with one cement basket below and five centralizers above each tool.

Wellhead: 9 5/8", X 10", 3000 psi casing head with 5 1/2" slips
10", 3000 X 6", 3000 psi tubing head with 1 1/2" IJ X 1 1/2', EUE
dual hanger.

Cementing: 9 5/8" surface casing: 110 sacks (130 cu. ft.) of Class "B" with 1/4# gel flake per sack and 3% CaCl. WOC 12 hours and test to 600 psi before drilling out. (Volume is 100% excess to circulate.)

5 1/2" production casing: STAGE #1: 165 sacks of 50/50 Poz with 6% gel and 1/4# gel flake per sack, followed by 50 sacks neat. (303 cu. ft. - Volume is 35% excess to cover Gallup.)

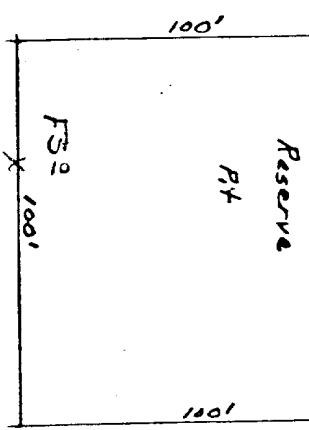
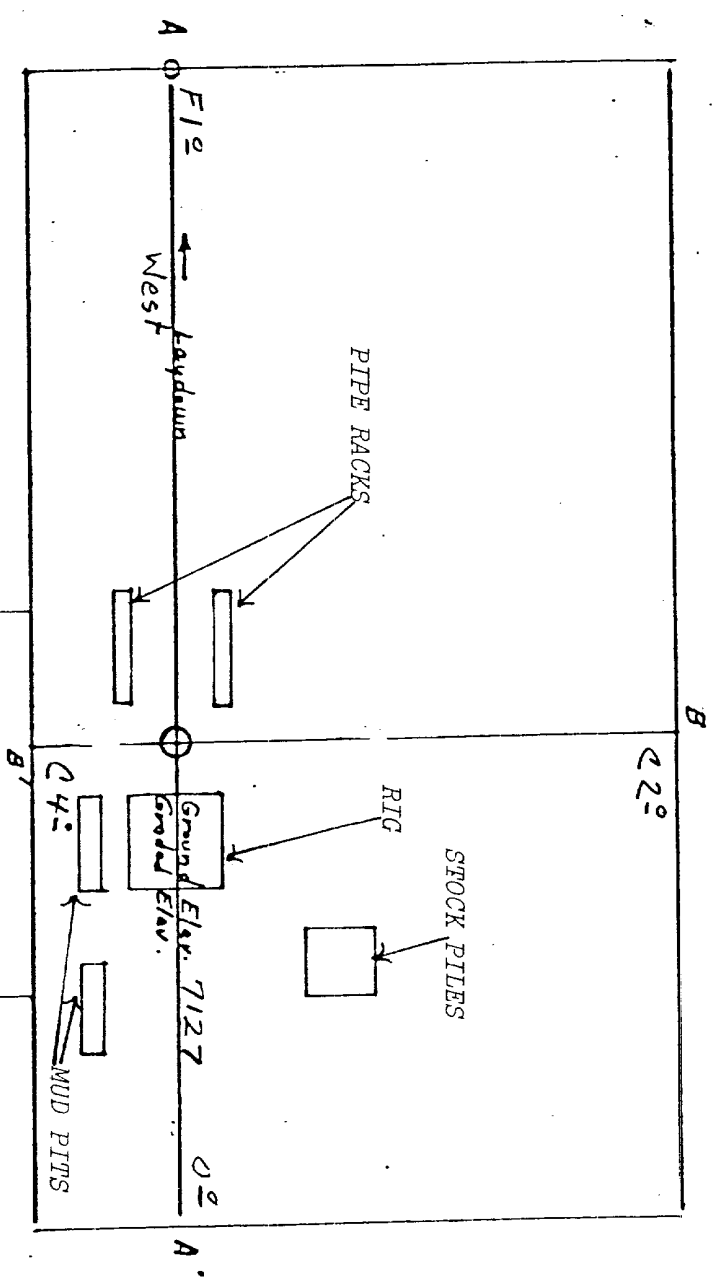
STAGE #2: 145 sacks of 50/50 Poz with 6% gel (215 cu. ft. - Volume is 50% excess to cover Cliff House.)

STAGE #3: 310 sacks of 50/50 Poz with 6% gel (459 cu. ft. - Volume is 50% excess to cover Ojo Alamo.)

WOC and circulate between stages as required by well conditions.

L. O. Van Ryan
District Production Manger

SOUTHLAND ROYALTY COMPANY #1 JOHNSON
 1590' FSL 1000' FEL Sec. 7-T25N-R4W
 Rio Arriba County, New Mexico



Vert. 1"=40' A-A' Horiz: 1"=100'

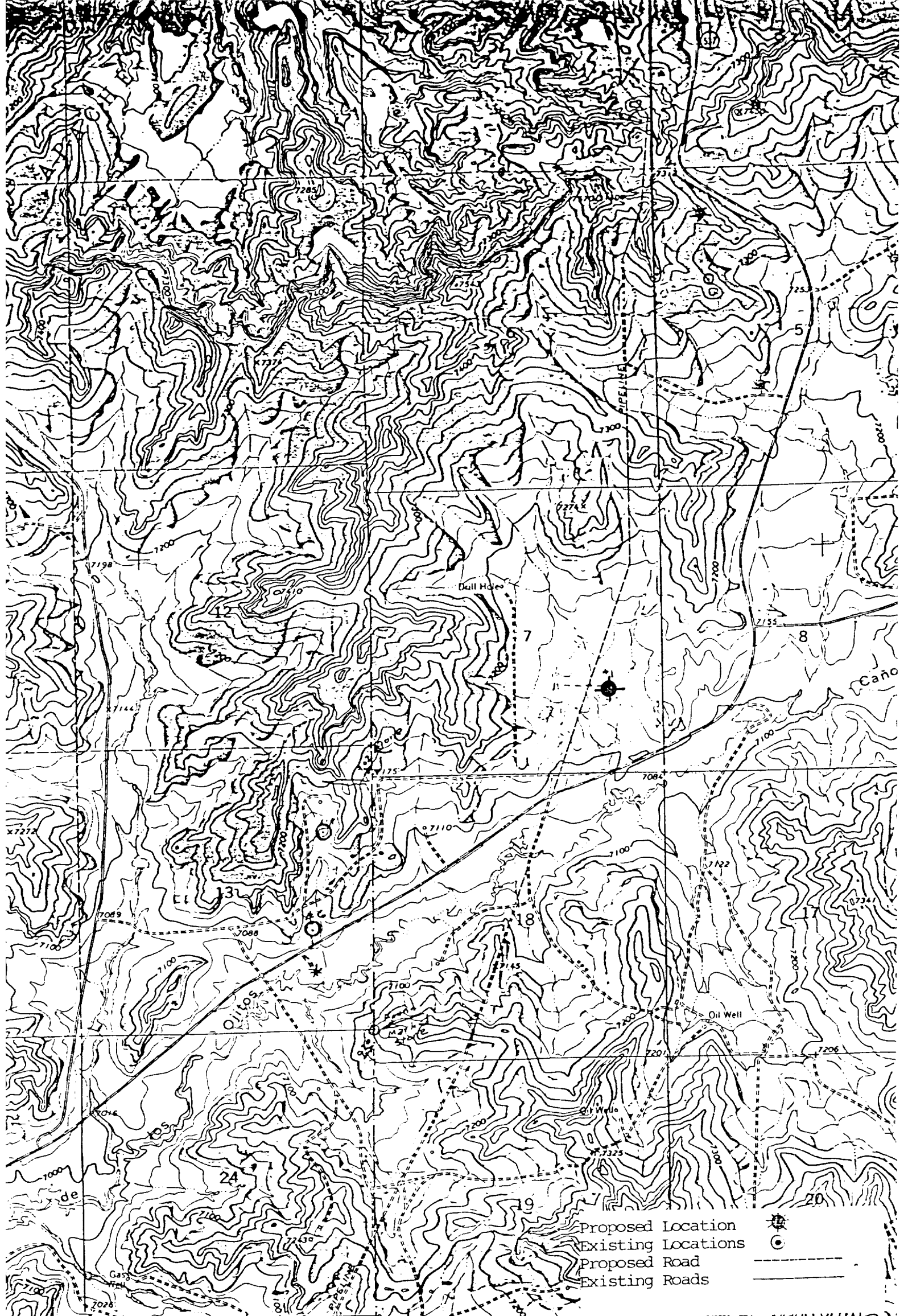
7130				
7120				

B-B' 1"=40' Horiz: 1"=100'

7130				
7120				

Vert. 1"=40' C-C' Horiz: 1"=100'

D-D' 1"=40' Horiz: 1"=100'



Vicinity Map for *FEE LEASE*
SOUTHLAND ROYALTY COMPANY #1 JOHNSON
1590'FSL 1000'FEL Sec. 7-T25N-R3W
RIO ARriba COUNTY, NEW MEXICO

