

UNITED STATES
DEPARTMENT OF THE INTERIOR
GEOLOGICAL SURVEY

APPLICATION FOR PERMIT TO DRILL, DEEPEN, OR PLUG BACK

1a. TYPE OF WORK

DRILL ☒DEEPEN ☐PLUG BACK ☐

b. TYPE OF WELL

OIL
WELL ☒GAS
WELL ☐

OTHER

SINGLE
ZONE ☒MULTIPLE
ZONE ☐

2. NAME OF OPERATOR

J. Gregory Merrion & Robert L. Bayless

3. ADDRESS OF OPERATOR

P.O. Box 1541, Farmington, NM 87401

4. LOCATION OF WELL (Report location clearly and in accordance with any State requirements.)*

At surface 790 FNL & 790 FEL

At proposed prod. zone same

14. DISTANCE IN MILES AND DIRECTION FROM NEAREST TOWN OR POST OFFICE*

Approx. 3.5 miles NE of Lindrith Camp

15. DISTANCE FROM PROPOSED*

LOCATION TO NEAREST
PROPERTY OR LEASE LINE, FT.
(Also to nearest drig. unit line, if any) 790'

16. NO. OF ACRES IN LEASE

2559±

18. DISTANCE FROM PROPOSED LOCATION*
TO NEAREST WELL, DRILLING, COMPLETED,
OR APPLIED FOR, ON THIS LEASE, FT.

appx. 4000'

19. PROPOSED DEPTH

5700'

21. ELEVATIONS (Show whether DF, RT, GR, etc.)

6379' GL

17. NO. OF ACRES ASSIGNED
TO THIS WELL

80

20. ROTARY OR CABLE TOOLS

Rotary

22. APPROX. DATE WORK WILL START*

As soon as possible

23. PROPOSED CASING AND CEMENTING PROGRAM

SIZE OF HOLE	SIZE OF CASING	WEIGHT PER FOOT	SETTING DEPTH	QUANTITY OF CEMENT
12-1/4"	8-5/8"	24 lb.	150 ft.	100 sacks
7-7/8"	4-1/2"	10.5 lb.	5700 ft.	500 sacks

Will drill 12-1/4" hole to 150 ft. and set 150 ft. of 8-5/8", 24 lb. casing with 100 sacks cement. Will drill 7-7/8" hole to 5700 ft. and run open hole logs. If appears productive will run 5700 ft. of 4-1/2", 10.5 lb. casing and cement with 500 sacks. Will set stage collar at approximately 4400 ft. and bring cement up across Ojo Alamo formation. Will perforate and stimulate as required. Minimum specifications for pressure control equipment which is to be used: 10", 900 series double ram BOP.

ESTIMATED TOPS

Formation	Depth	Content
Ojo Alamo	1520'	
Pictured Cliffs	2200'	Gas, Salt Water
Mesa Verde	3640'	Salt Water
Gallup	5410'	Oil, Salt Water

IN ABOVE SPACE DESCRIBE PROPOSED PROGRAM: If proposal is to deepen or plug back, give data on present productive zone and proposed new productive zone. If proposal is to drill or deepen directionally, give pertinent data on subsurface locations and measured and true vertical depths. Give blowout preventer program, if any.

24.

SIGNED

TITLE

Engineer

DATE April 15, 1980

(This space for Federal or State office use)

PERMIT NO.

APPROVAL DATE

APPROVED BY

TITLE

CONDITIONS OF APPROVAL, IF ANY:

NMOC

*See Instructions On Reverse Side

30-039-22426

5. LEASE DESIGNATION AND SERIAL NO.

SF-078874

6. IF INDIAN, ALLOTTEE OR TRIBE NAME

7. UNIT AGREEMENT NAME

8. FARM OR LEASE NAME

Canyon Largo Unit

9. WELL NO.

298

10. FIELD AND POOL, OR WILDCAT

Devils Fork Gallup

11. SEC., T., R., M., OR BLK.
AND SURVEY OR AREA

Sec. 3, T24N, R6W

12. COUNTY OR PARISH

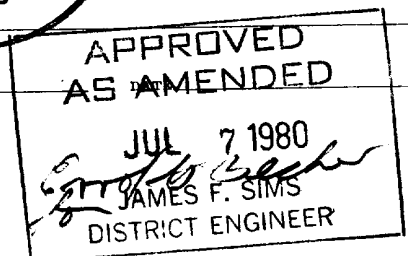
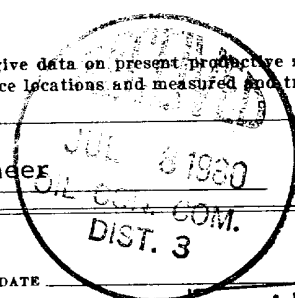
Rio Arriba

13. STATE

N.M.

RECEIVED

APR 17 1980

U. S. GEOLOGICAL SURVEY
DURANGO, CO.

All distances must be from the outer boundaries of the Section

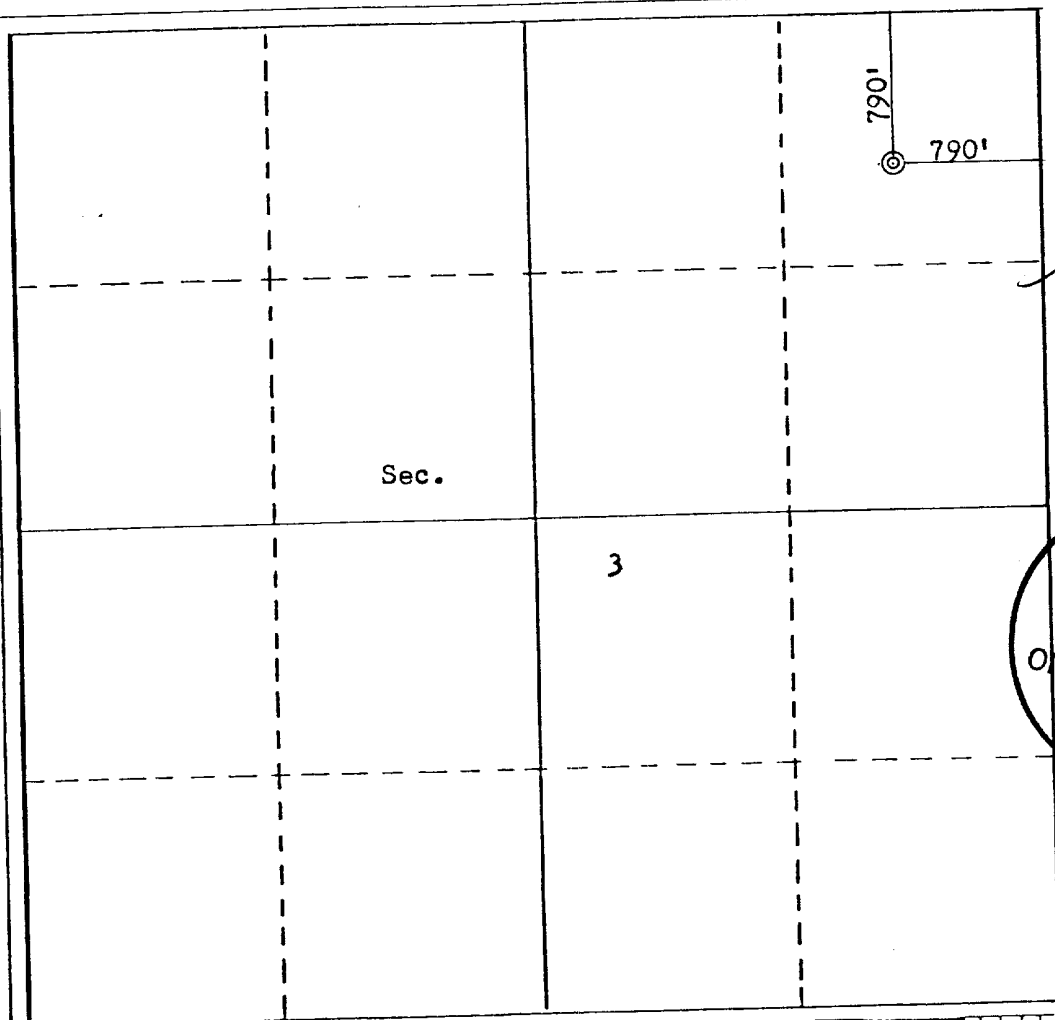
Operator MERRION & BAYLESS			Lease CANYON LARGO UNIT		Well No. 298
Unit Letter A	Section 3	Township 24N	Range 6W	County Rio Arriba	
Actual Footage Location of Well:					
790 feet from the North line and		790 feet from the East line			
Ground Level Elev. 6379	Producing Formation Gallup	Pool Devils Fork		Dedicated Acreage: 80 Acres	

1. Outline the acreage dedicated to the subject well by colored pencil or hachure marks on the plat below.
2. If more than one lease is dedicated to the well, outline each and identify the ownership thereof (both as to working interest and royalty).
3. If more than one lease of different ownership is dedicated to the well, have the interests of all owners been consolidated by communitization, unitization, force-pooling, etc?

☐ Yes ☐ No If answer is "yes," type of consolidation _____

If answer is "no," list the owners and tract descriptions which have actually been consolidated. (Use reverse side of this form if necessary.) _____

No allowable will be assigned to the well until all interests have been consolidated (by communitization, unitization, forced-pooling, or otherwise) or until a non-standard unit, eliminating such interests, has been approved by the Commission.



CERTIFICATION

I hereby certify that the information contained herein is true and complete to the best of my knowledge and belief.

Steven S. Dunn
Name
Steven S. Dunn

Position
Engineer

Company
Merrion & Bayless

Date
April 15, 1980

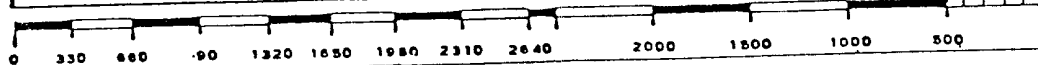
RECEIVED
JUL 8 1980
OIL CONSERVATION DIVISION
I hereby certify that the well location shown on this plat was plotted from field notes of actual surveys made by me or under my supervision, and that the same are true and correct to the best of my knowledge and belief.

Date Surveyed
March 12, 1980

Registered Professional Engineer and/or Land Surveyor

Fred B. Kerr
Fred B. Kerr

Certificate No.
3950



UNITED STATES
DEPARTMENT OF THE INTERIOR
GEOLOGICAL SURVEY

SUNDRY NOTICES AND REPORTS ON WELLS

(Do not use this form for proposals to drill or to deepen or plug back to a different reservoir. Use Form 9-331-C for such proposals.)

1. oil ☒ well gas ☐ well other ☐

2. NAME OF OPERATOR
J. Gregory Merrion & Robert L. Bayless

3. ADDRESS OF OPERATOR
P.O. Box 507, Farmington, NM 87401

4. LOCATION OF WELL (REPORT LOCATION CLEARLY. See space 17 below.)
AT SURFACE: 790 FNL & 790 FEL
AT TOP PROD. INTERVAL: same
AT TOTAL DEPTH: same

16. CHECK APPROPRIATE BOX TO INDICATE NATURE OF NOTICE, REPORT, OR OTHER DATA

REQUEST FOR APPROVAL TO:

TEST WATER SHUT-OFF ☐
FRACTURE TREAT ☐
SHOOT OR ACIDIZE ☐
REPAIR WELL ☐
PULL OR ALTER CASING ☐
MULTIPLE COMPLETE ☐
CHANGE ZONES ☐
ABANDON* ☐
(other) Amend 9-331 dated 04-15-80

SUBSEQUENT REPORT OF:

RECEIVED

APR 26 1980

U. S. GEOLOGICAL SURVEY
FARMINGTON, N. M.

NOTE: Report results of multiple completion or zone change on Form 9-330.)

17. DESCRIBE PROPOSED OR COMPLETED OPERATIONS (Clearly state all pertinent details, and give pertinent dates, including estimated date of starting any proposed work. If well is directionally drilled, give subsurface locations and measured and true vertical depths for all markers and zones pertinent to this work.)*

Please amend APD as follows:

1. Item #23: Setting depth of 8-5/8", K-55 casing will be 200 ft. w/150 sacks Class "B" cement w/3% CACL₂. The 4-1/2", K-55 casing will be set w/500 sacks Class "H" cement, 50-50 Pozmix w/2% gel. Circulating medium will be clear water and clay.

2. Estimated tops: San Jose -----Surface
Ojo Alamo -----1520'
Kirtland -----1815'
Fruitland -----1950'
Pic. Cliffs---2200'

Cliff House ---3640'
Point Lookout -4350'
Gallup -----5405'

Subsurface Safety Valve: Manu. and Type _____ Set @ _____ Ft.

18. I hereby certify that the foregoing is true and correct

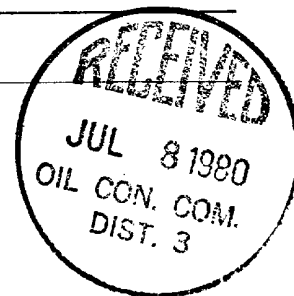
SIGNED J. Gregory Merrion TITLE Operator DATE April 29, 1980

(This space for Federal or State office use)

APPROVED BY _____ TITLE _____ DATE _____
CONDITIONS OF APPROVAL, IF ANY:

*See Instructions on Reverse Side

NMOCC



SURFACE WELL CONTROL EQUIPMENT

MERRION & BAYLESS
Canyon Largo Unit #298
NE/Section 3, T24N, R6W
Rio Arriba County, New Mexico

MERRION~BAYLESS

DRAWN BY

REVISED

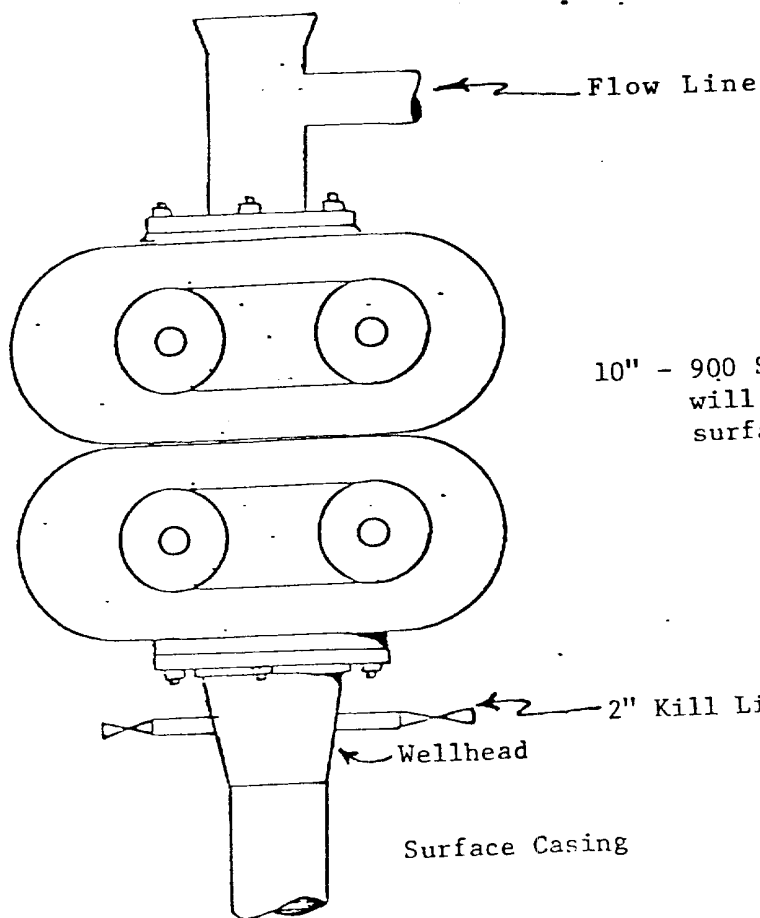
APPROVED BY:

SCALE:

DATE:

SCHEMATIC

DRAWING NUMBER



10" - 900 Series Hydraulic Double Ram BOP which will be tested to 500 PSIG after setting of surface casing

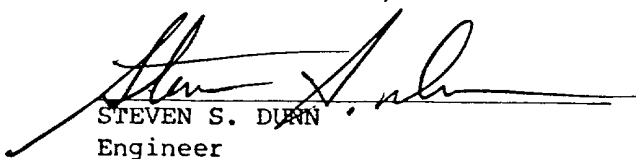
SURFACE USE OPERATIONS PLAN

MERRION & BAYLESS
Canyon Largo Unit #298
Section 3, T24N, R6W

- 1 & 2. A topographical map is attached showing location of drillsite and access roads to location; new roads are color coded on the location map. The terrain is relatively flat and no improvements are planned on existing roads. Our planned access road will be twelve feet in width, and will follow the existing terrain. No turnouts, culverts or cuts and fills are anticipated on the proposed access. In addition, natural drainage and surfacing material will be used.
3. Wells within one mile radius are shown on the topographical map.
4. A. Existing facilities owned or controlled by the Operator and shown on the attached map are as follows: wellheads.
B. No new facilities are contemplated.
C. Disturbed areas will be reseeded per BLM specifications.
5. Water will be hauled from Largo Canyon water hole.
Truck will haul water on proposed access route shown.
6. No construction materials will be used.
7. Methods of disposal of waste materials:
A. Cuttings will be buried in drilling pit.
B. Drilling fluids will be buried in drilling pit.
C. No produced fluids are anticipated.
D. Sewage will be buried.
E. Garbage and other waste material will be buried.
F. Operator will clean up, fill, and level pits and reseed location per BLM specifications.
8. Ancillary facilities: pumping unit, production unit, and stock tank.
9. Wellsite layout attached.
10. Restoration of drillsite -- pits will be filled and leveled and reseeded per BLM specification immediately after completion.
11. Other information: The drillsite is fairly level, grass and brush covered semi-arid land. There is no other surface use or facilities existent. An archeological survey statement will be furnished.
12. Operator representative: Robert L. Bayless (505) 325-5093
P.O. Box 1541
Farmington, NM 87401
13. Certification:

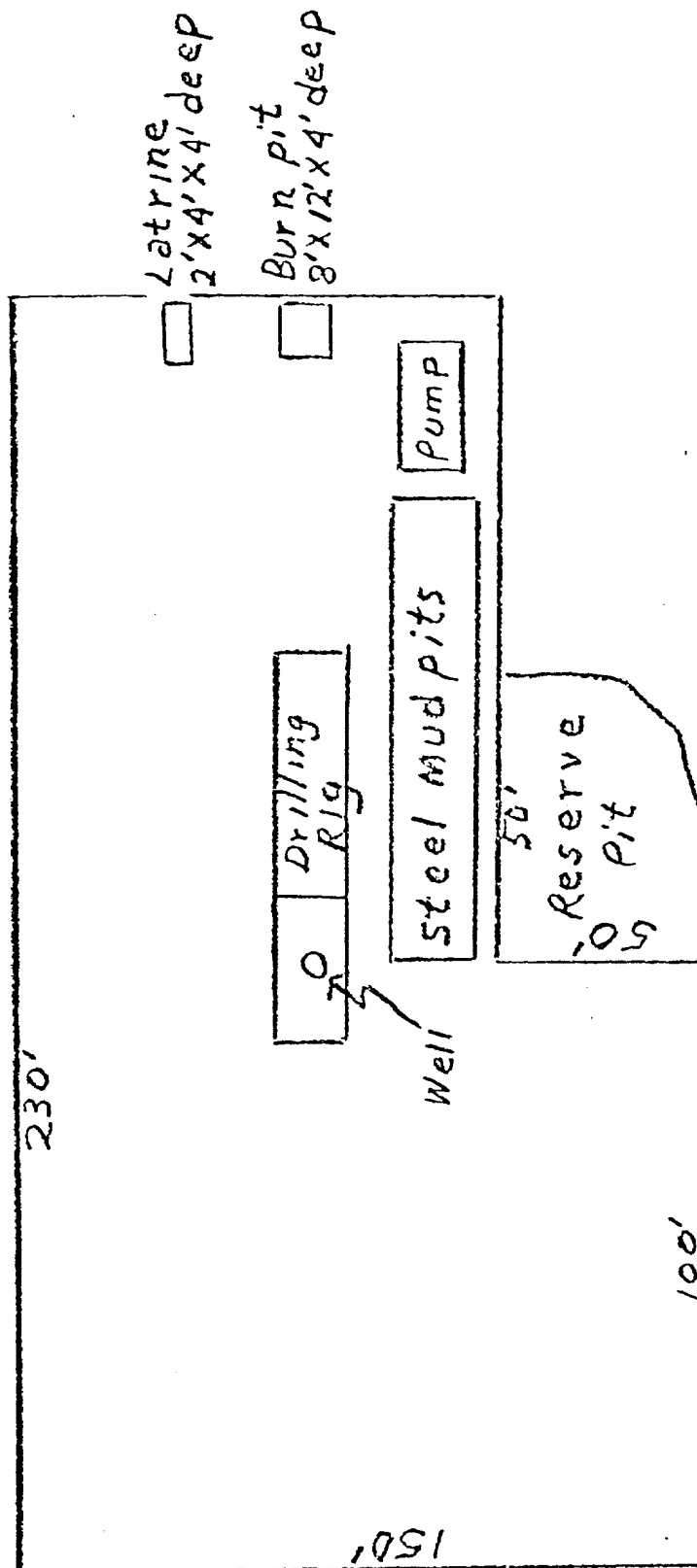
I hereby certify that I, or persons under my direct supervision, have inspected the proposed drillsite and access route; that I am familiar with the conditions which presently exist; that the statements made in this plan are, to the best of my knowledge, true and correct; and, that the work associated with the operations proposed herein will be performed by Merrion & Bayless and its contractors and subcontractors in conformity with this plan and the terms and conditions under which it is approved.

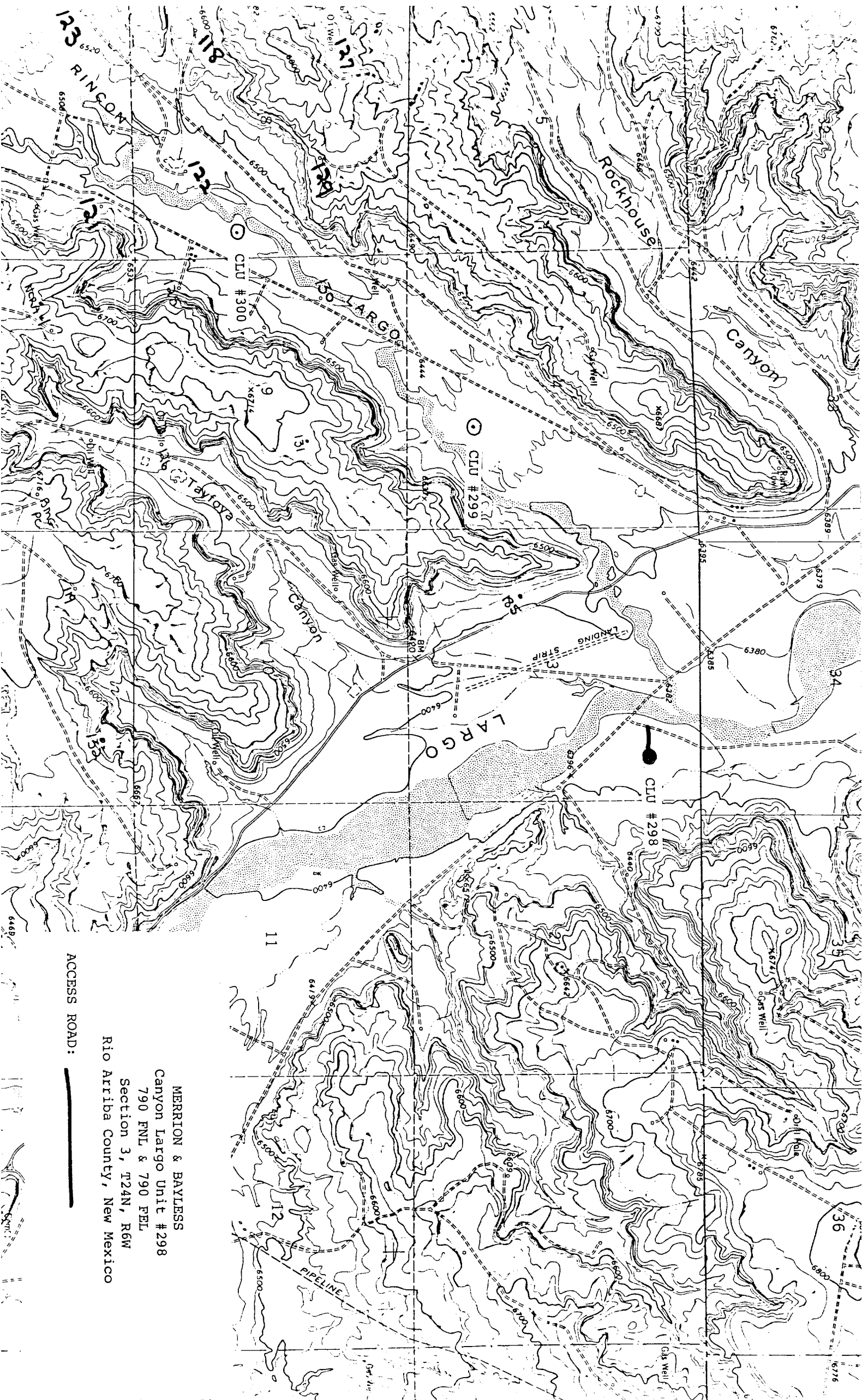
4/15/80
Date


STEVEN S. DURN
Engineer
Merrion & Bayless

LOCATION AND EQUIPMENT LAY-OUT

MERRION & BAYLESS
Canyon Largo Unit #298
NE/Section 3, T24N, R6W
Rio Arriba County, New Mexico





ACCESS ROAD:



MERRION & BAYLESS
Canyon Largo Unit #298
790 FNL & 790 FEL
Section 3, T24N, R6W
Rio Arriba County, New Mexico