

UNITED STATES
DEPARTMENT OF THE INTERIOR
GEOLOGICAL SURVEY

30-049-22429

APPLICATION FOR PERMIT TO DRILL, DEEPEN, OR PLUG BACK

1a. TYPE OF WORK

DRILL ☒DEEPEN ☐PLUG BACK ☐

b. TYPE OF WELL

OIL
WELL ☐GAS
WELL ☒

OTHER

SINGLE
ZONE ☒MULTIPLE
ZONE ☐

2. NAME OF OPERATOR

J. Gregory Merrion & Robert L. Bayless

3. ADDRESS OF OPERATOR

P.O. Box 1541, Farmington, NM 87401

4. LOCATION OF WELL (Report location clearly and in accordance with any State requirements.)

At surface 790 FNL & 1830 FWL

At proposed prod. zone same

RECEIVED

MAY 23 1980

U. S. GEOLOGICAL SURVEY
FARMINGTON, N. M.

14. DISTANCE IN MILES AND DIRECTION FROM NEAREST TOWN OR POST OFFICE

15. DISTANCE FROM PROPOSED*

LOCATION TO NEAREST
PROPERTY OR LEASE LINE, FT.
(Also to nearest drilg. unit line, if any)

16. NO. OF ACRES IN LEASE

1000

17. NO. OF ACRES ASSIGNED
TO THIS WELL

160

18. DISTANCE FROM PROPOSED LOCATION*
TO NEAREST WELL, DRILLING, COMPLETED,
OR APPLIED FOR, ON THIS LEASE, FT.

19. PROPOSED DEPTH

3300'

20. ROTARY OR CABLE TOOLS

Rotary

21. ELEVATIONS (Show whether DF, RT, GR, etc.)

7271' GL

22. APPROX. DATE WORK WILL START*

June 15, 1980

23.

PROPOSED CASING AND CEMENTING PROGRAM

SIZE OF HOLE	SIZE OF CASING	WEIGHT PER FOOT	SETTING DEPTH	QUANTITY OF CEMENT
9"	7" used J-55	23#	90'	30 sacks circulated
5-1/8"	3.5" used K-55	9.3#	3300'	150 sacks circulated to surface

Will drill 9" hole to 90' and set 90' of 7", 23#, J-55 used casing with 30 sacks Class H cement. Will drill 5-1/8" hole to 3300' and run 3300' of 3-1/2", EUE, K-55, used casing and cement with 150 sacks Class H cement with 2% D-79, circulated to surface. Circulating medium will be clear water, natural mud and water-loss control additives. No abnormal pressures or temperatures are anticipated. Will run Induction and Density Logs. Blowout preventer schematic is attached. The gas from this formation is dedicated.

ESTIMATED TOPS

Surface Formation: Ojo Alamo - Salt Water
2850': Kirtland
3050': Fruitland
3125': Pictured Cliffs - Natural Gas, Salt Water

IN ABOVE SPACE DESCRIBE PROPOSED PROGRAM: If proposal is to deepen or plug back, give data on present productive zone and proposed new productive zone. If proposal is to drill or deepen directionally, give pertinent data on subsurface locations and measured and true vertical depths. Give blowout preventer program, if any.

24.

SIGNED

TITLE

Operator

May 22, 1980

(This space for Federal or State office use)

PERMIT NO.

APPROVAL DATE

APPROVED BY

TITLE

CONDITIONS OF APPROVAL, IF ANY:

*See Instructions On Reverse Side

APPROVED

JUL 10 1980

DISTRICT ENGINEER

OIL CONSERVATION DIVISION

STATE OF NEW MEXICO
ENERGY AND MINERALS DEPARTMENTP. O. BOX 2088
SANTA FE, NEW MEXICO 87501Form C-107
Revised 10-1-78

All distances must be from the outer boundaries of the Section.

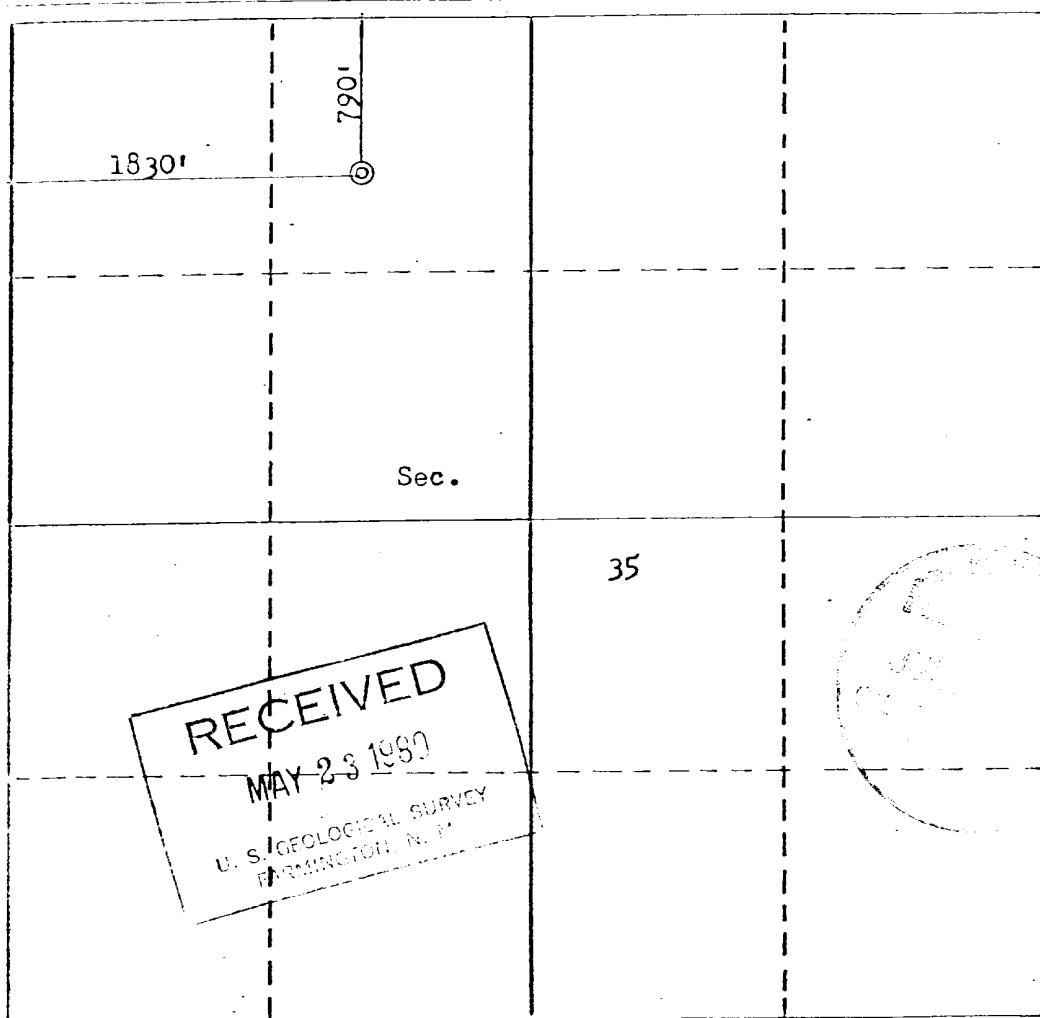
Operator MERRION & BAYLESS		Lease EAST LINDRITH		Well No. 7
Unit Letter C	Section 35	Township 24N	Range 2W	County Rio Arriba
Actual Footage Location of Wells: 790 feet from the North line and 1830 feet from the West line Ground Level Elev. 7271 Producing Formation Pictured Cliffs Pool South Blanco Dedicated Acreage 160 Acres				

1. Outline the acreage dedicated to the subject well by colored pencil or hatchure marks on the plat below.
2. If more than one lease is dedicated to the well, outline each and identify the ownership thereof (both as to working interest and royalty).
3. If more than one lease of different ownership is dedicated to the well, have the interests of all owners been consolidated by communitization, unitization, force-pooling, etc?

☐ Yes ☐ No If answer is "yes," type of consolidation _____

If answer is "no," list the owners and tract descriptions which have actually been consolidated. (Use reverse side of this form if necessary.) _____

No allowable will be assigned to the well until all interests have been consolidated (by communitization, unitization, forced-pooling, or otherwise) or until a non-standard unit, eliminating such interests, has been approved by the Commission.



CERTIFICATION

I hereby certify that the information contained herein is true and complete to the best of my knowledge and belief.

Name **Robert L. Bayless**

Position
Co-Owner

Company
Merrion & Bayless

Date
May 22, 1980

I hereby certify that the well location shown on this plat was plotted from field notes of actual surveys made by me or under my supervision, and that the same is true and correct to the best of my knowledge and belief.

Date Surveyed

May 19, 1980

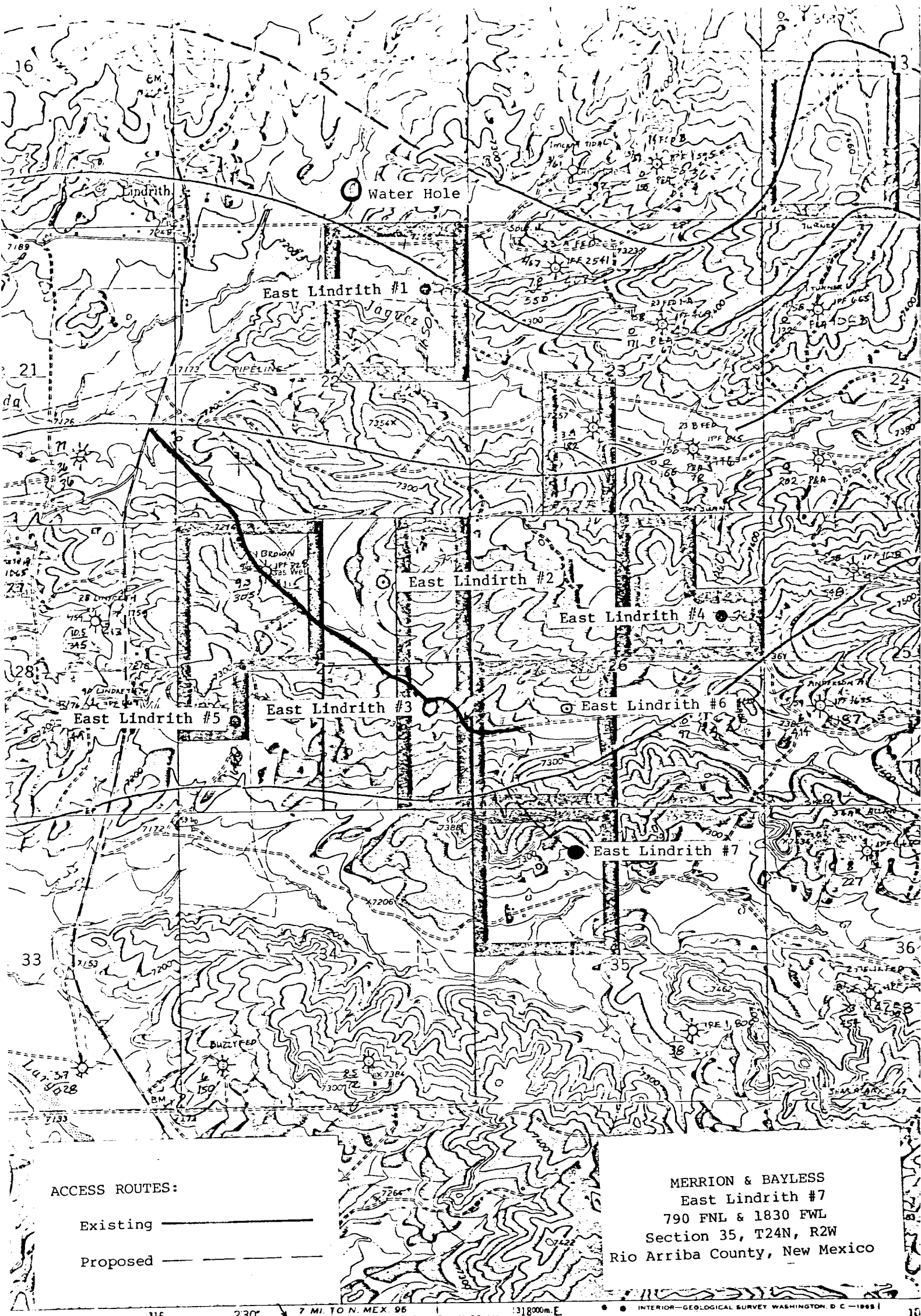
Registered Professional Engineer
and/or Land Surveyor

Fred B. Kerr Jr.

Certificate No.

3950

0 330 660 990 1320 1650 1980 2310 2640 2000 1500 1000 500 0



ACCESS ROUTES:

- Existing —————
- Proposed - - - - -

MERRION & BAYLESS
East Lindrith #7
790 FNL & 1830 FWL
Section 35, T24N, R2W
Rio Arriba County, New Mexico