

UNITED STATES
DEPARTMENT OF THE INTERIOR
GEOLOGICAL SURVEY30-44-22437
LEASE DESIGNATION AND SERIAL NO.

NM-28713

APPLICATION FOR PERMIT TO DRILL, DEEPEN, OR PLUG BACK

1a. TYPE OF WORK

DRILL ☒DEEPEN ☐PLUG BACK ☐

b. TYPE OF WELL

OIL
WELL ☐GAS
WELL ☒

OTHER

SINGLE
ZONE ☐MULTIPLE
ZONE ☐

2. NAME OF OPERATOR

ODESSA NATURAL CORPORATION Attn: J. Strojek

3. ADDRESS OF OPERATOR

P. O. Box 3908 Odessa, Texas 79760

4. LOCATION OF WELL (Report location clearly and in accordance with any State requirements.)*

At surface

1850'FSL, 1850'FWL

At proposed prod. zone

Same

14. DISTANCE IN MILES AND DIRECTION FROM NEAREST TOWN OR POST OFFICE*

30 miles Northeast of Cuba, New Mexico

15. DISTANCE FROM PROPOSED*
LOCATION TO NEAREST
PROPERTY OR LEASE LINE, FT.
(Also to nearest drlg. unit line, if any)

1850'

16. NO. OF ACRES IN LEASE

160.500

17. NO. OF ACRES ASSIGNED
TO THIS WELL

160

18. DISTANCE FROM PROPOSED LOCATION*
TO NEAREST WELL, DRILLING, COMPLETED,
OR APPLIED FOR, ON THIS LEASE, FT.

1200'

19. PROPOSED DEPTH

3190'

20. ROTARY OR TABLE TOOL

Rotary

21. ELEVATIONS (Show whether DF, RT, GR, etc.)

6948'GL

22. APPROX. DATE WORK WILL START*

8/3/80

23.

PROPOSED CASING AND CEMENTING PROGRAM

SIZE OF HOLE	SIZE OF CASING	WEIGHT PER FOOT	SETTING DEPTH	QUANTITY OF CEMENT
12-1/4"	8-5/8"	24.0	120'	125 sacks
7-7/8"	4-1/2"	10.50	3190'	200 sacks

All producing intervals in Pictured cliffs formation shall be perforated and stimulated as necessary.

EXHIBITS:

- "A" Location and Elevation Plat
"B" Ten Point Compliance Program
"C" Blowout Preventer Diagram
"D" Multi-Point Requirements for A.P.D.

- "E" Access Road to Location
"F" Radius Map of Field
"G" Drill Rig Layout
"H" Fracturing Program Layout

The gas from this well is committed.

The SW/4, Section 20 is dedicated to this well.

IN ABOVE SPACE DESCRIBE PROPOSED PROGRAM: If proposal is to deepen or plug back, give data on present productive zone and proposed new productive zone. If proposal is to drill or deepen directionally, give pertinent data on subsurface locations and measured and true vertical depths. Give blowout preventer program, if any.

24. FOR: ODESSA NATURAL CORPORATION President, Walsh Engr.

SIGNED

Ewell N. Walsh, P.E.

TITLE

& Production Corp.

DATE

7/3/80

(This space for Federal or State office use)

PERMIT NO.

APPROVAL DATE

APPROVED BY

TITLE

CONDITIONS OF APPROVAL, IF ANY:

*See Instructions On Reverse Side

APPROVED
AS AMENDED
JUL 19 1980
JAMES F. SIMS
DISTRICT ENGINEER

OIL CONSERVATION DIVISION

EXHIBIT "A"

STATE OF NEW MEXICO
ENERGY AND MINERALS DEPARTMENT

P. O. BOX 2088

SANTA FE, NEW MEXICO 87501

Form C-107
Revised 10-1-78

All distances must be from the outer boundaries of the Section.

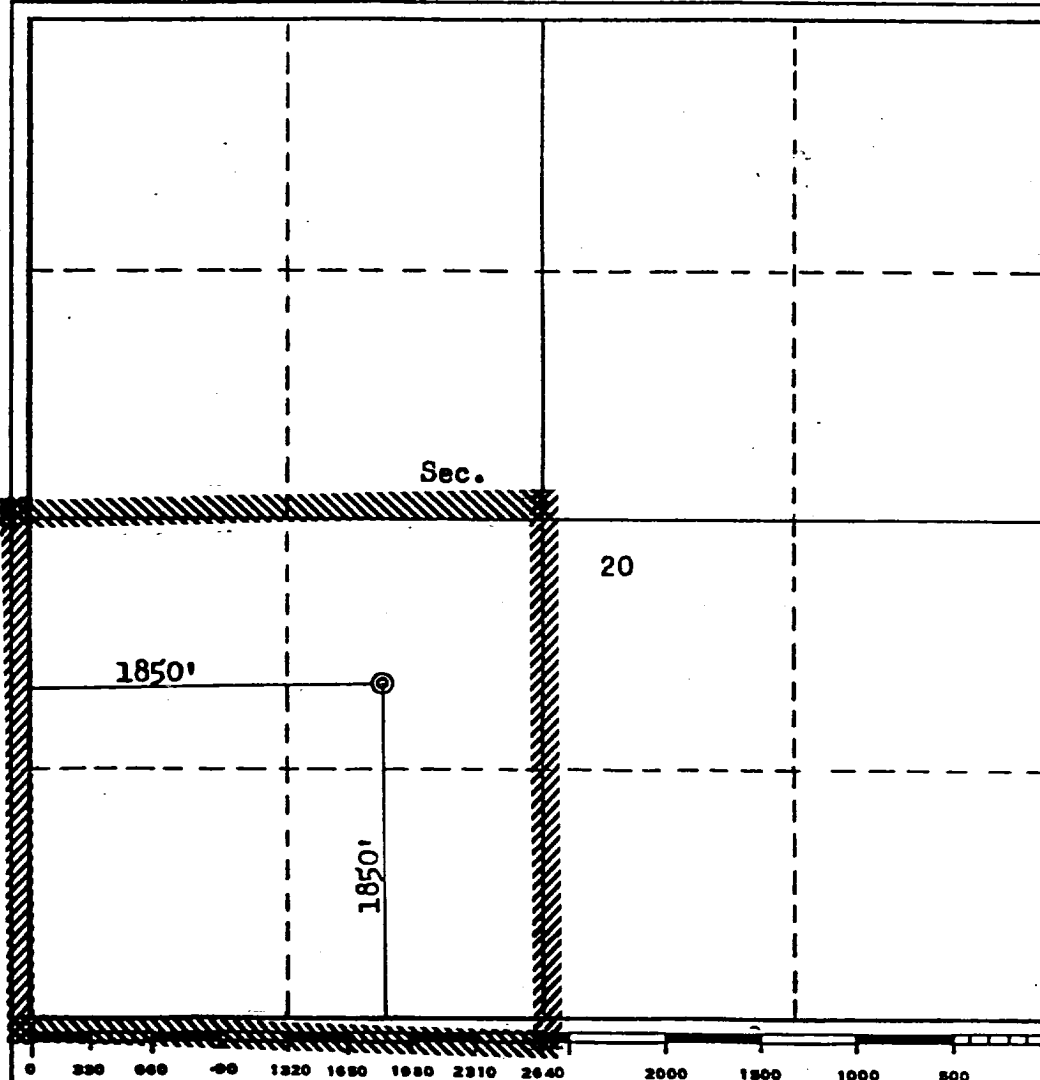
Operator ODESSA NATURAL CORPORATION			Lease LITTLE FEDERAL 20		Well No. 2
Unit Letter K	Section 20	Township 24N	Range 3W	County Rio Arriba	
Actual Footage Location of Well: 1850 feet from the South line and 1850 feet from the West line					
Ground Level Elev. 6948	Producing Formation Pictured Cliffs		Pool South Blanco P.C., Ext.		Dedicated Acreage: 160 Acres

1. Outline the acreage dedicated to the subject well by colored pencil or hachure marks on the plat below.
2. If more than one lease is dedicated to the well, outline each and identify the ownership thereof (both as to working interest and royalty).
3. If more than one lease of different ownership is dedicated to the well, have the interests of all owners been consolidated by communitization, unitization, force-pooling, etc?

☐ Yes ☐ No If answer is "yes," type of consolidation _____

If answer is "no," list the owners and tract descriptions which have actually been consolidated. (Use reverse side of this form if necessary.) _____

No allowable will be assigned to the well until all interests have been consolidated (by communitization, unitization, forced-pooling, or otherwise) or until a non-standard unit, eliminating such interests, has been approved by the Commission.



CERTIFICATION

I hereby certify that the information contained herein is true and complete to the best of my knowledge and belief.

FOR: ODESSA NATURAL CORP.

ORIGINAL SIGNED BY:

Name **EWELL N. WALSH**
Ewell N. Walsh, P.E.Position
PresidentCompany
Walsh Engineering & Prod. Corp.Date
7/3/80

I hereby certify that the well location shown on this plat was plotted from field notes of actual surveys made by me or under my supervision, and that the same is true and correct to the best of my knowledge and belief.

Date Surveyed
April 8, 1980
Registered Professional Engineer
and/or Land Surveyor
Fred B. Kerr, Jr.
Certificate No. **3950**

