

UNITED STATES  
DEPARTMENT OF THE INTERIOR  
GEOLOGICAL SURVEY

APPLICATION FOR PERMIT TO DRILL, DEEPEN, OR PLUG BACK

1a. TYPE OF WORK  
DRILL ☒ DEEPEN ☐ PLUG BACK ☐

b. TYPE OF WELL  
OIL WELL ☒ GAS WELL ☐ OTHER ☐ SINGLE ZONE ☒ MULTIPLE ZONE ☐

2. NAME OF OPERATOR  
Mobil Producing TX. & N.M. Inc.

3. ADDRESS OF OPERATOR  
Nine Greenway Plaza, Suite 2700; Houston, Texas 77046

4. LOCATION OF WELL (Report location clearly and in accordance with any State requirements.)  
At surface

G 1849' FNL & 1846' FEL, Sec. 28, T24N, R3W  
At proposed prod. zone  
Same as surface

14. DISTANCE IN MILES AND DIRECTION FROM NEAREST TOWN OR POST OFFICE  
50 miles Southeast of Farmington

15. DISTANCE FROM PROPOSED LOCATION TO NEAREST PROPERTY OR LEASE LINE, FT.  
(Also to nearest drilg. unit line, if any)  
3430' to lease line

18. DISTANCE FROM PROPOSED LOCATION TO NEAREST WELL, DRILLING COMPLETED, OR APPLIED FOR, ON THIS LEASE, FT.  
2840' NW to Well #1

21. ELEVATIONS (Show whether DF, RT, GR, etc.)  
6981' - Ground

23. PROPOSED CASING AND CEMENTING PROGRAM

SIZE OF HOLE	SIZE OF CASING	WEIGHT PER FOOT	SETTING DEPTH	QUANTITY OF CEMENT
17-1/2"	13-3/8"	48# H-40	0-300'	1. Circulate to Surface
12-1/4"	8-5/8"	24# K-55	0-2500'	2. Circulate to Surface
	8-5/8"	32# H-40	2500-3900'	
7-7/8"	5-1/2"	15.5# K-55	0-7500'	3. Circulate to 3800'
	5-1/2"	17# K-55	7500-8200'	

Cementing Program

- Class A with 2% CaCl<sub>2</sub>
- Class H

Mud Program

Depth	Type of Mud	Weight	Viscosity	pH	Water Loss
0-300'	Spud Mud	10.0#	----	--	----
300-8200'	Fresh Water Gel	9.0#	40	--	----

Blowout Preventer Program

See Attachment

Logging Program: Type IES Depth 3400'± - T.D.  
Neutron Density Surface - T.D.

IN ABOVE SPACE DESCRIBE PROPOSED PROGRAM: If proposal is to deepen or plug back, give data on present productive zone and proposed new productive zone. If proposal is to drill or deepen directionally, give pertinent data on subsurface locations and measured and true vertical depths. Give blowout preventer program, if any.

24. SIGNED A. D. Bond A. D. Bond TITLE Engineering Coordinator II DATE May 19, 1980

(This space for Federal or State office use)

PERMIT NO. AS AM APPROVAL DATE May 19, 1980

APPROVED BY Bruce W. Smith TITLE Assistant Director DATE May 19, 1980

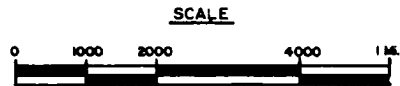
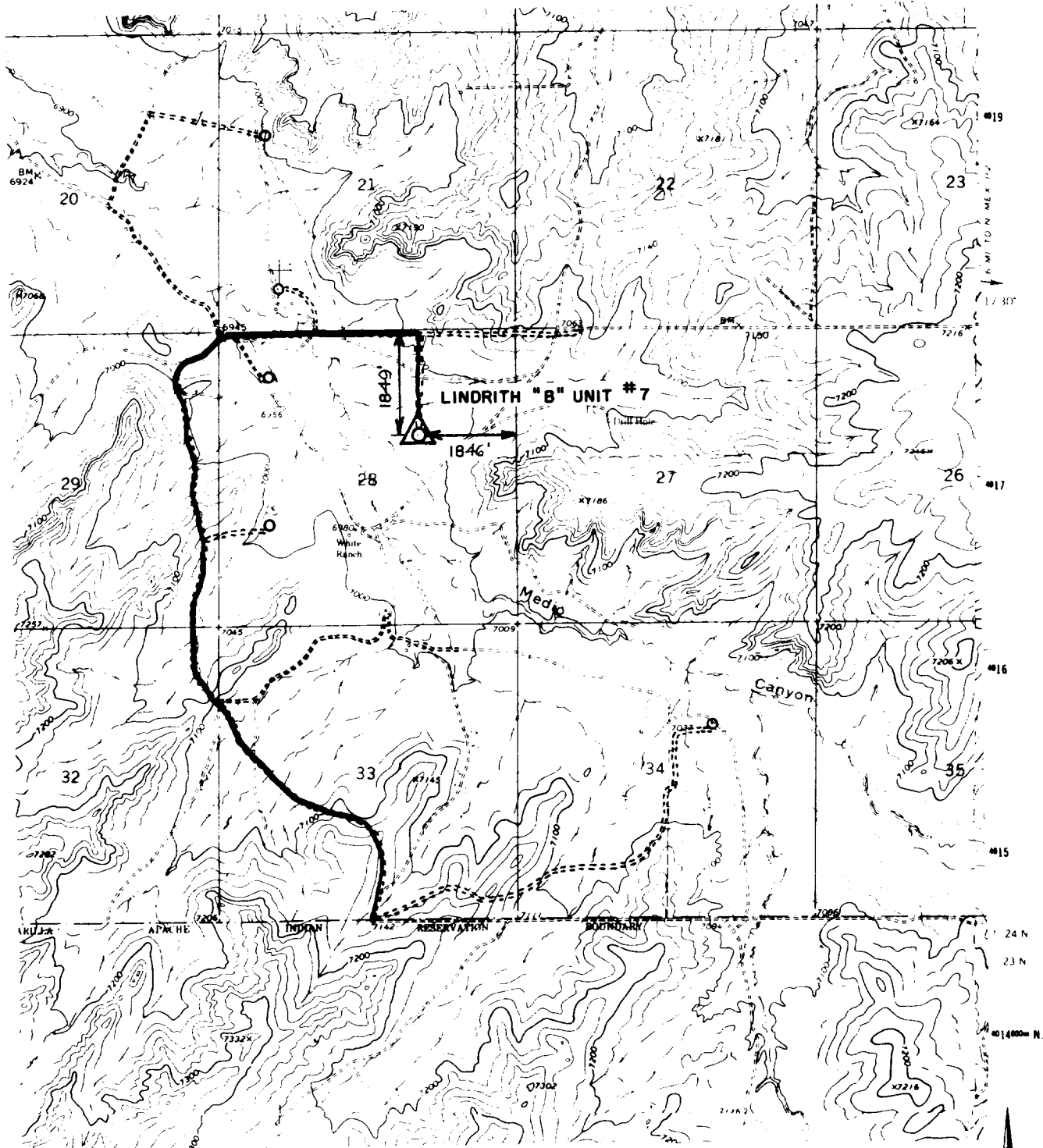
CONDITIONS OF APPROVAL, IF ANY:

\*See Instructions On Reverse Side

Form C-102  
Supersedes C-128  
Effective 1-1-65

Date Surveyed
<b>April 11, 1980</b>
Registered Professional Engineer and/or Land Surveyor
<b>H. A. Carson, Jr.</b>
Certificate No.
<b>5063</b>

R-3-W



**Mobil Producing  
Texas & New Mexico Inc.  
Houston, Texas**

**LINDRITH "B" UNIT  
VICINITY PLAT  
RIO ARRIBA CO., NEW MEXICO  
MAP "B"**

Scale

Date 4-17-80

Drawn J.J.

Checked

Approved

Revised