

All distances must be from the outer boundaries of the Section.

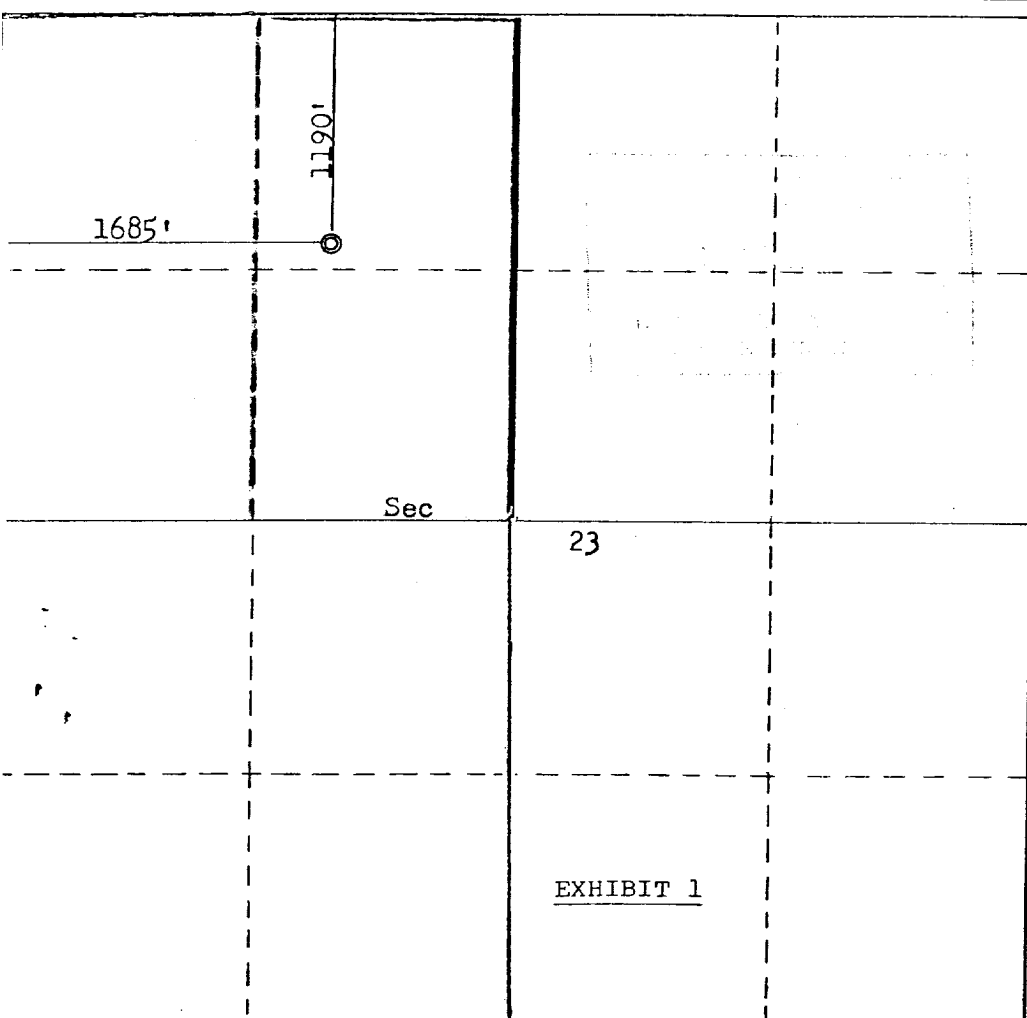
Operator Grace Petroleum Corporation			Lease Grace Federal 23		Well No. 1
Unit Letter C	Section 23	Township 24N	Range 7W	County Rio Arriba	
Actual Footage Location of Well:					
1190 feet from the North line and		1685 feet from the West line			
Ground Level Elev. 6778	Producing Formation Gallup	Pool Devil's Fork	Dedicated Acreage: 320 Acres		

- Outline the acreage dedicated to the subject well by colored pencil or hachure marks on the plat below.
- If more than one lease is dedicated to the well, outline each and identify the ownership thereof (both as to working interest and royalty). Single lease
- If more than one lease of different ownership is dedicated to the well, have the interests of all owners been consolidated by communitization, unitization, force-pooling, etc? N/A

☐ Yes ☐ No If answer is "yes," type of consolidation \_\_\_\_\_

If answer is "no," list the owners and tract descriptions which have actually been consolidated. (Use reverse side of this form if necessary.) N/A

No allowable will be assigned to the well until all interests have been consolidated (by communitization, unitization, forced-pooling, or otherwise) or until a non-standard unit, eliminating such interests, has been approved by the Commission.



CERTIFICATION

I hereby certify that the information contained herein is true and complete to the best of my knowledge and belief.

*Scotty A. Smith*  
Name

Scotty A. Smith  
Position Southern District  
Operations Manager

Company  
Grace Petroleum Corporation

Date  
March 26, 1980

I hereby certify that the well location shown on this plat was plotted from field notes of actual surveys made by me or under my supervision, and that the same is true and correct to the best of my knowledge and belief.

Date Surveyed  
May 4, 1978

Registered Professional Engineer  
and/or Land Surveyor  
*Fred B. Kerr, Jr.*  
Fred B. Kerr, Jr.

Certificate No. 3950

