

UNITED STATES  
DEPARTMENT OF THE INTERIOR  
GEOLOGICAL SURVEY

SUNDRY NOTICES AND REPORTS ON WELLS

(Do not use this form for proposals to drill or to deepen or plug back to a different reservoir. Use Form 9-331-C for such proposals.)

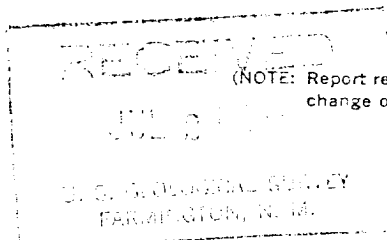
1. oil ☐ well gas ☒ well other ☐
2. NAME OF OPERATOR  
Amoco Production Company
3. ADDRESS OF OPERATOR  
501 Airport Drive, Farmington, NM 87401
4. LOCATION OF WELL (REPORT LOCATION CLEARLY. See space 17 below.)  
AT SURFACE: 940' FSL x 1020' FWL  
AT TOP PROD. INTERVAL: Same  
AT TOTAL DEPTH: Same
16. CHECK APPROPRIATE BOX TO INDICATE NATURE OF NOTICE, REPORT, OR OTHER DATA

REQUEST FOR APPROVAL TO:

- TEST WATER SHUT-OFF ☐  
FRACTURE TREAT ☐  
SHOOT OR ACIDIZE ☐  
REPAIR WELL ☐  
PULL OR ALTER CASING ☐  
MULTIPLE COMPLETE ☐  
CHANGE ZONES ☐  
ABANDON\* ☒  
(other) ☐

SUBSEQUENT REPORT OF:

- ☐  
☐  
☐  
☐  
☐  
☐  
☐  
☐  
☐  
☐



(NOTE: Report results of multiple completion or zone change on Form 9-330.)

5. LEASE  
Jicarilla Contract 148
6. IF INDIAN, ALLOTTEE OR TRIBE NAME  
Jicarilla Apache
7. UNIT AGREEMENT NAME
8. FARM OR LEASE NAME  
Jicarilla Contract 148
9. WELL NO.  
22
10. FIELD OR WILDCAT NAME Gonzales Mesaverde  
South Blanco Pictured Cliffs/Otero
11. SEC., T., R., M., OR BLK. AND SURVEY OR Chacra  
AREA SW/4, SW/4, Section 13,  
T25N, R5W
12. COUNTY OR PARISH Rio Arriba 13. STATE NM
14. API NO.  
30-039-22483
15. ELEVATIONS (SHOW DF, KDB, AND WD)  
6918' GL

17. DESCRIBE PROPOSED OR COMPLETED OPERATIONS (Clearly state all pertinent details, and give pertinent dates, including estimated date of starting any proposed work. If well is directionally drilled, give subsurface locations and measured and true vertical depths for all markers and zones pertinent to this work.)\*

Amoco Production Company plans to plug and abandon the Gonzales Mesaverde formation of the above mentioned well as follows:

- 1) Set cement retainer at 5340'.
- 2) Squeeze Mesaverde perforations from 5375-5508 with 150 sacks of Class "B" neat cement.
- 3) Set cement retainer at 5135.
- 4) Squeeze Mesaverde perforations from 5168-5200 with 150 sacks of Class "B" neat cement.

NOTE: This Form 9-331 should have been sent in January and we apologize for not sending this form in sooner.

Subsurface Safety Valve: Manu. and Type \_\_\_\_\_ Set @ \_\_\_\_\_ Ft.

18. I hereby certify that the foregoing is true and correct

SIGNED E. E. SVOBODA Original Signed By  
TITLE Dist. Admin. Supvr. DATE JUL 21 1981

(This space for Federal or State office use)

APPROVED BY \_\_\_\_\_ TITLE \_\_\_\_\_ DATE \_\_\_\_\_  
CONDITIONS OF APPROVAL, IF ANY:

NMOCC

\*See Instructions on Reverse Side

