

UNITED STATES
DEPARTMENT OF THE INTERIOR
GEOLOGICAL SURVEY

APPLICATION FOR PERMIT TO DRILL, DEEPEN, OR PLUG BACK

1a. TYPE OF WORK

DRILL ☒DEEPEN ☐PLUG BACK ☐

b. TYPE OF WELL

OIL
WELL ☒GAS
WELL ☐OTHER ☐SINGLE
ZONE ☒MULTIPLE
ZONE ☐

2. NAME OF OPERATOR

Mobil Producing TX. & N.M. Inc.

3. ADDRESS OF OPERATOR

Nine Greenway Plaza, Suite 2700, Houston, TX 77046

4. LOCATION OF WELL (Report location clearly and in accordance with any State requirements.)*

At surface

A 790' FNL & 790' FEL, Sec. 21, T24N, R3W

At proposed prod. zone

Same as surface

14. DISTANCE IN MILES AND DIRECTION FROM NEAREST TOWN OR POST OFFICE

50 miles Southeast from Farmington

15. DISTANCE FROM PROPOSED*

LOCATION TO NEAREST

PROPERTY OR LEASE LINE, FT.

(Also to nearest drig. unit line, if any)

790'

18. DISTANCE FROM PROPOSED LOCATION*

TO NEAREST WELL, DRILLING, COMPLETED,

OR APPLIED FOR, ON THIS LEASE, FT.

3795' SW

to Well #5

21. ELEVATIONS (Show whether DF, RT, GR, etc.)

7147' GR

23.

DRILLING OPERATIONS AUTHORIZED ARE

SUBJECT TO THE FOLLOWING

"GENERAL REQUIREMENTS"

PROPOSED CASING AND CEMENTING PROGRAM

5. LEASE DESIGNATION AND SERIAL NO.

Santa Fe 078915 078913

6. IF INDIAN, ALLOTTEE OR TRIBE NAME

7. UNIT AGREEMENT NAME

Lindrith B Unit

8. FARM OR LEASE NAME

9. WELL NO.

16

10. FIELD AND POOL, OR WILDCAT

Chacon-Dakota Associated

11. SEC., T., R., M., OR BLK.
AND SURVEY OR AREA

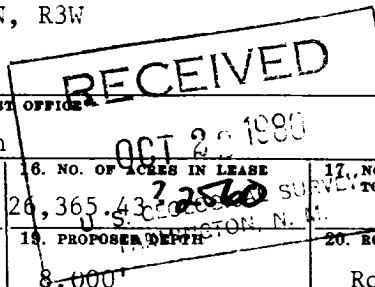
Sec. 21, T24N, R3W

12. COUNTY OR PARISH

Rio Arriba

13. STATE

NM



16. NO. OF ACRES IN LEASE

26,365.43

17. NO. OF ACRES ASSIGNED

160

19. PROPOSED DEPTH

8,000'

20. ROTARY OR CABLE TOOLS

Rotary

22. APPROX. DATE WORK WILL START*

As soon as possible

SIZE OF HOLE	SIZE OF CASING	WEIGHT PER FOOT	SETTING DEPTH	QUANTITY OF CEMENT
17-1/2"	12-3/4" *	45.51# H-40	0 - 400'	1. Circulate to surface w/300sx.
11"	8-5/8" *	24# S-80	0 - 3100'	2. Circulate to surface w/900sx.
		28# S-80	3100 - 3900'	
7-7/8"	5-1/2" *	15.5# K-55	0 - 7000'	3. Circulate to Approx. 3800'
		17# K-55	7000 - 7700'	(2 stages). W/950 sx.

*All casing will be new

CEMENTING PROGRAM

1. Class B with 2% CaCl₂.

2. Lite weight & Class B

3. Lite weight & Class B

MUD PROGRAM

Depth	Type of Mud	Weight	Viscosity	ph	Water Loss
0 - 400'	Spud Mud	9.0 - 9.2	35 - 45	9+	NC
400 - TD	Fresh Water Gel	8.8	35 - 40	9+	10 cc's

BLOWOUT PREVENTER PROGRAM

See Attachment

LOGGING PROGRAM: Type

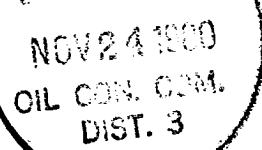
IES

Depth

Surf. to TD

FDL/CNL

Surf. to TD



IN ABOVE SPACE DESCRIBE PROPOSED PROGRAM: If proposal is to deepen or plug back, give data on present productive zone and proposed new productive zone. If proposal is to drill or deepen directionally, give pertinent data on subsurface locations and measured and true vertical depths. Give blowout preventer program, if any.

24.

SIGNED

J. A. Manis

TITLE

Regulatory Engineering

Coordinator II

DATE October 17, 1980

(This space for Federal or State office use)

PERMIT NO.

APPROVAL DATE

APPROVED BY

TITLE

DATE

CONDITIONS OF APPROVAL, IF ANY:

Bruce L. Hamby

*See Instructions On Reverse Side

110000

**NEW MEXICO OIL CONSERVATION COMMISSION
WELL LOCATION AND ACREAGE DEDICATION PLAT**

Form C-102
Supersedes C-128
Effective 1-1-65

All distances must be from the outer boundaries of the Section.

Operator Mobil Producing TX. & N.M. Inc.			Lease Lindrith B Unit		Well No. 16
Unit Letter A	Section 21	Township 24N	Range 3W	County Rio Arriba	
Actual Footage Location of Well: 790 feet from the North line and 790 feet from the East line					
Ground Level Elev. 7147'	Producing Formation Dakota	Pool Chacon-Dakota Associated		Dedicated Acreage: 160 Acres	

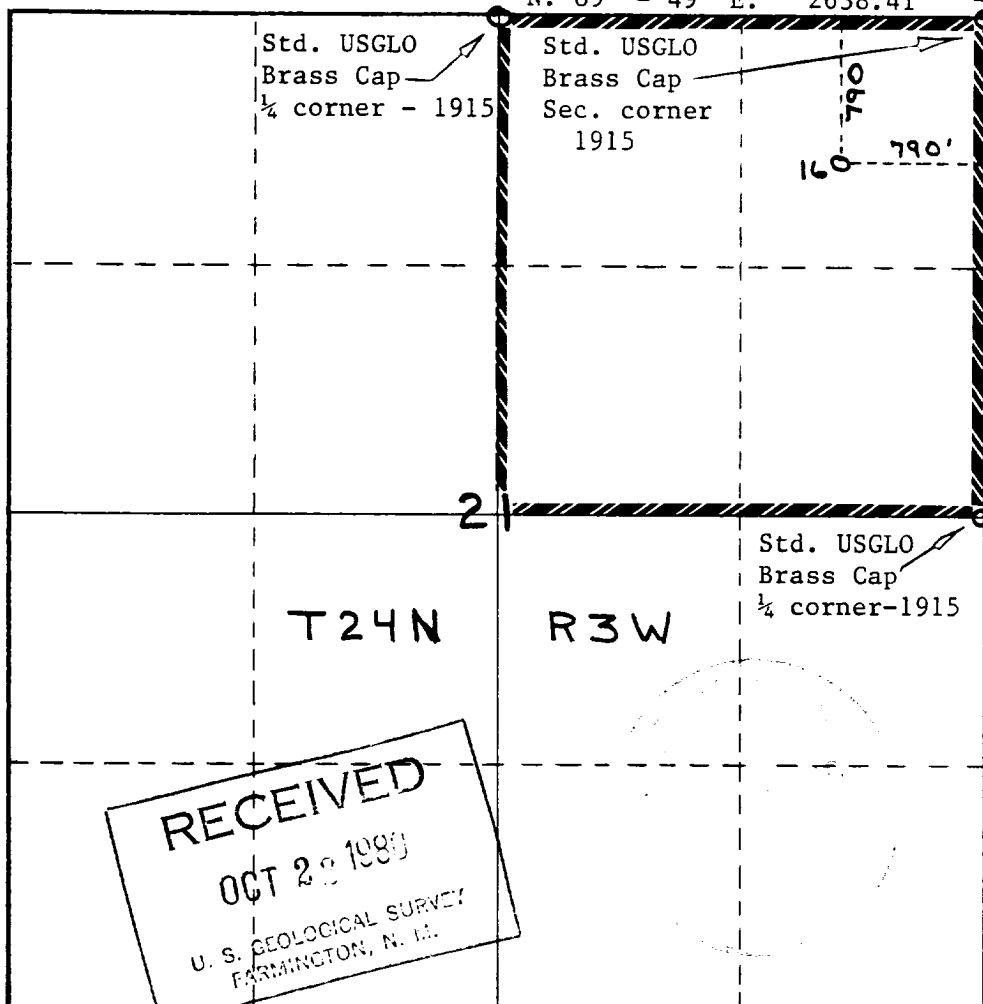
1. Outline the acreage dedicated to the subject well by colored pencil or hachure marks on the plat below.
2. If more than one lease is dedicated to the well, outline each and identify the ownership thereof (both as to working interest and royalty).
3. If more than one lease of different ownership is dedicated to the well, have the interests of all owners been consolidated by communitization, unitization, force-pooling, etc?

☒ Yes ☐ No If answer is "yes," type of consolidation Unitization

If answer is "no," list the owners and tract descriptions which have actually been consolidated. (Use reverse side of this form if necessary.) _____

No allowable will be assigned to the well until all interests have been consolidated (by communitization, unitization, forced-pooling, or otherwise) or until a non-standard unit, eliminating such interests, has been approved by the Commission.

N. 89° - 49' E. 2638.41'



CERTIFICATION

I hereby certify that the information contained herein is true and complete to the best of my knowledge and belief.

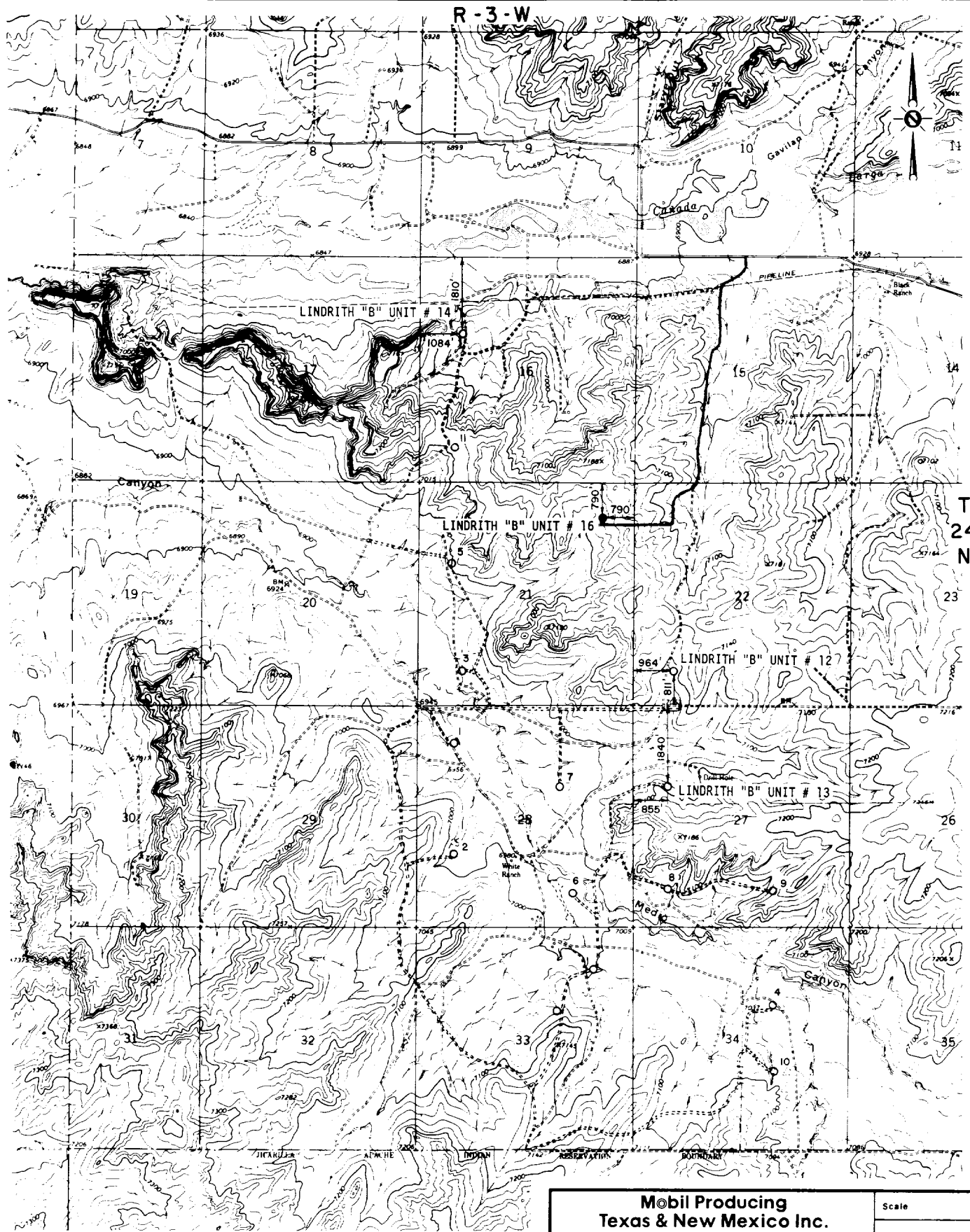
J. A. Morris
Name
J. A. D. Bond
Position **Regulatory Engineering Coordinator II**
Company **Mobil Producing TX. & N.M. Inc.**

Date
October 17, 1980

REGISTERED LAND SURVEYOR
NEW MEXICO
No. 5063
H. A. Carson, Jr.
Date Surveyed
September 23, 1980
Registered Professional Engineer and/or Land Surveyor
H. A. Carson, Jr.

Certificate No.
5063

0 330 660 990 1320 1650 1980 2310 2640 2000 1500 1000 500 C



**Mobil Producing
Texas & New Mexico Inc.**
Houston, Texas

LINDRITH "B" UNIT
VICINITY PLAT
RIO ARRIBA CO., NEW MEXICO
MAP "B"

Scale

Date 10-2-80

Drawn J.W.J.

Checked

Approved

Revised

SCALE

