

UNITED STATES
DEPARTMENT OF THE INTERIOR
GEOLOGICAL SURVEY

APPLICATION FOR PERMIT TO DRILL, DEEPEN, OR PLUG BACK

1a. TYPE OF WORK

DRILL ☐DEEPEN ☐PLUG BACK ☒

b. TYPE OF WELL

OIL
WELL ☒GAS
WELL ☐

OTHER

SINGLE
ZONE ☐MULTIPLE
ZONE ☐

2. NAME OF OPERATOR

Robert L. Bayless

3. ADDRESS OF OPERATOR

P.O. Box 1541, Farmington, NM 87499

4. LOCATION OF WELL (Report location clearly and in accordance with any State requirements.)

At surface 2510' FSL & 790' FEL

At proposed prod. zone

same

14. DISTANCE IN MILES AND DIRECTION FROM NEAREST TOWN OR POST OFFICE*

15. DISTANCE FROM PROPOSED*

LOCATION TO NEAREST
PROPERTY OR LEASE LINE, FT.
(Also to nearest drlg. unit line, if any)

16. NO. OF ACRES IN LEASE

800

17. NO. OF ACRES ASSIGNED
TO THIS WELL

160

-320-

18. DISTANCE FROM PROPOSED LOCATION*
TO NEAREST WELL, DRILLING, COMPLETED,
OR APPLIED FOR, ON THIS LEASE, FT.

19. PROPOSED DEPTH

7000

20. ROTARY OR CABLE TOOLS

Rotary

21. ELEVATIONS (Show whether DF, RT, GR, etc.)

6899' GL

DRILLING OPERATIONS AUTHORIZED ARE
SUBJECT TO COMPLIANCE WITH ATTACHED
"GENERAL REQUIREMENTS"

22. APPROX. DATE WORK WILL START*

ASAP

23. PROPOSED CASING AND CEMENTING PROGRAM

This action is subject to administrative
appeal pursuant to 30 CFR 290.

SIZE OF HOLE	SIZE OF CASING	WEIGHT PER FOOT	SETTING DEPTH	QUANTITY OF CEMENT
12 1/4"	8-5/8"	24#/ft.	335'	89 ft ³ Class B
7-7/8"	4 1/2"	10.5#/ft.	6958'	882 ft ³ 50-50 pozmix + 2% gel.

We propose to plug the Dakota interval in this well and recomplete in the Gallup interval. The existing Dakota perforation are 6908-6922' RKB. We will plug and abandon the Dakota formation by setting a cement retainer at + 6500' and pumping 50 sacks of Class B cement to plug the Dakota. We will perforate, acidize and fracture stimulate the lower Gallup interval, 5956-5970' RKB and the upper Gallup interval, 5767-5868' to test the well for economic producibility.

Change in Ownership from Dakota Resources

IN ABOVE SPACE DESCRIBE PROPOSED PROGRAM: If proposal is to deepen or plug back, give data on present productive zone and proposed new productive zone. If proposal is to drill or deepen directionally, give pertinent data on subsurface locations and measured and true vertical depths. Give blowout preventer program, if any.

24.

SIGNED

TITLE Operator

(This space for Federal or State office use)

PERMIT NO.

APPROVAL DATE

APPROVED BY

TITLE

CONDITIONS OF APPROVAL, IF ANY:

DATE July 20, 1983

APPROVED

DATE AUG 10 1983

Alan B. Hines
AREA MANAGER
FARMINGTON RESOURCE AREA

All distances must be from the outer boundaries of the Section.

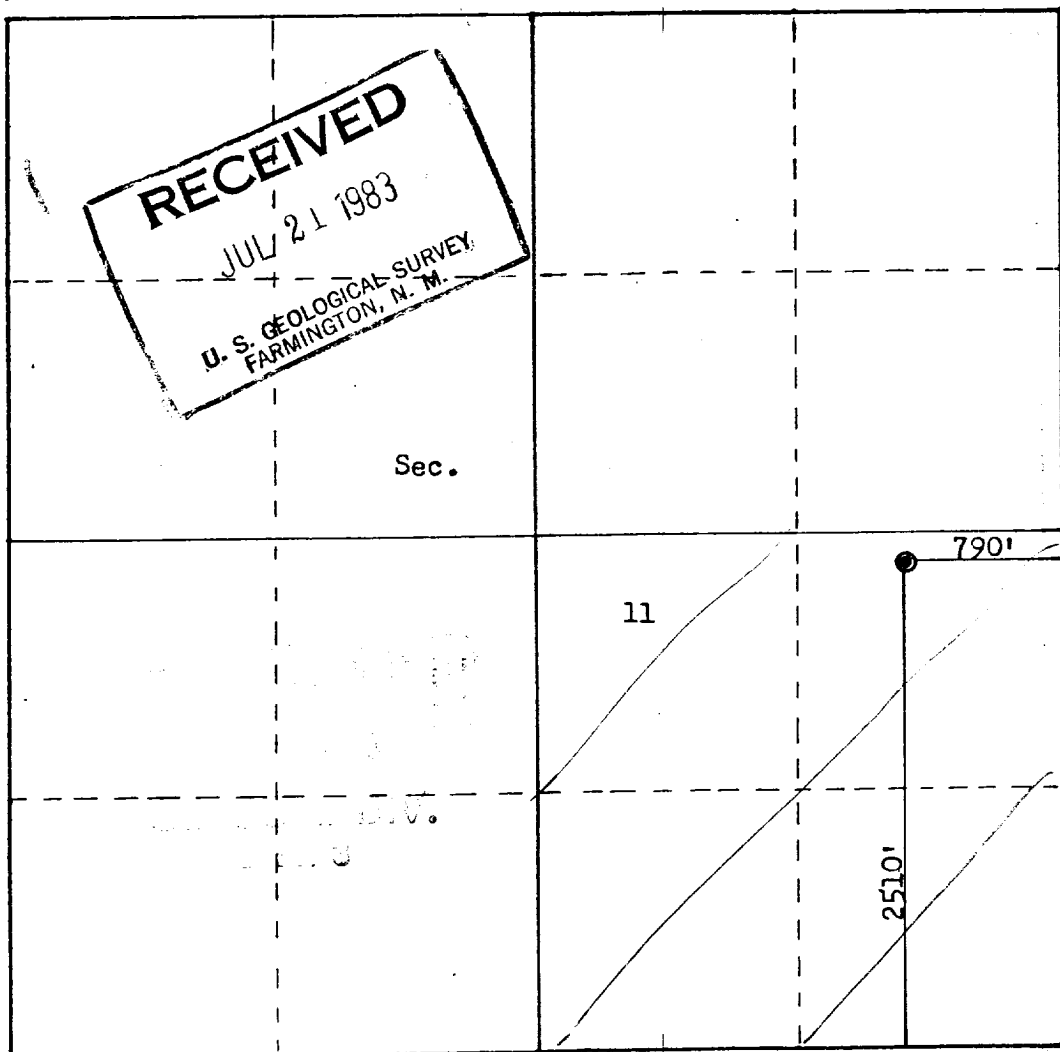
Operator Robert L. Bayless			Lease John S. Dashko		Well No. #1
Unit Letter J	Section 11	Township 24N	Range 7W	County Rio Arriba	
Actual Footage Location of Well: 2510 feet from the South line and 790 feet from the East line					
Ground Level Elev. 6899	Producing Formation Gallup	Pool Devils Fork Gallup Assoc.		Dedicated Acreage: 320 160 Acres	

1. Outline the acreage dedicated to the subject well by colored pencil or hatchure marks on the plat below.
2. If more than one lease is dedicated to the well, outline each and identify the ownership thereof (both as to working interest and royalty).
3. If more than one lease of different ownership is dedicated to the well, have the interests of all owners been consolidated by communitization, unitization, force-pooling, etc?

☐ Yes ☐ No If answer is "yes," type of consolidation _____

If answer is "no," list the owners and tract descriptions which have actually been consolidated. (Use reverse side of this form if necessary.) _____

No allowable will be assigned to the well until all interests have been consolidated (by communitization, unitization, forced-pooling, or otherwise) or until a non-standard unit, eliminating such interests, has been approved by the Commission.



CERTIFICATION

I hereby certify that the information contained herein is true and complete to the best of my knowledge and belief.

Robert L. Bayless
Name

Robert L. Bayless
Position

Owner
Company

Robert L. Bayless
Date

July 20, 1983

I hereby certify that the well location shown on this plat was plotted from field notes of actual surveys made by me or under my supervision, and that the same is true and correct to the best of my knowledge and belief.

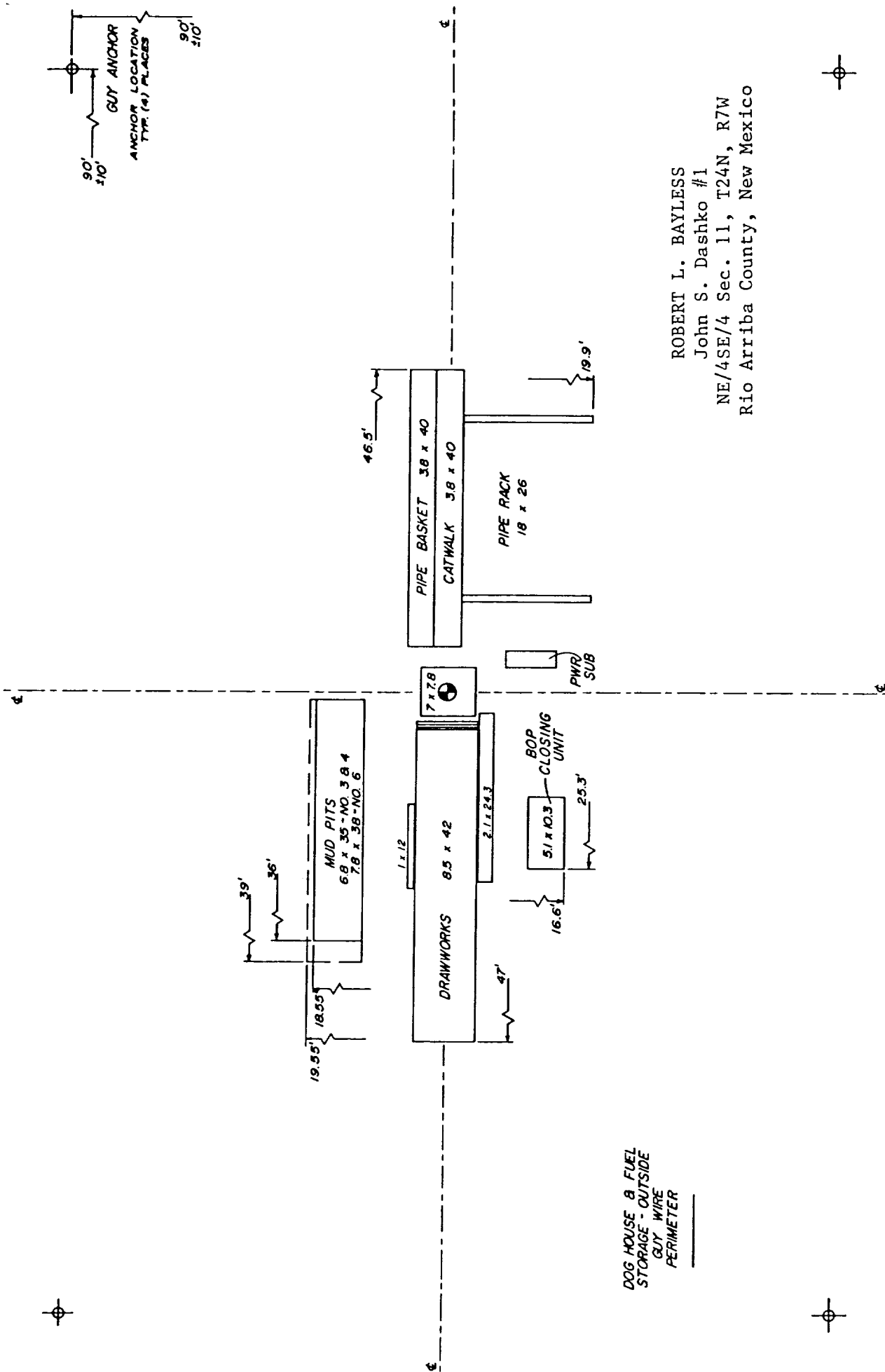
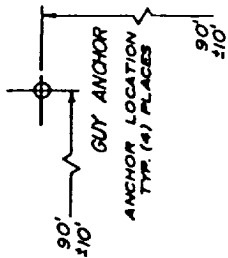
Date Surveyed

7-19-83

Registered Professional Engineer
and Land Surveyor

Fred B. Kerr Jr.
Fred B. Kerr Jr.

Certificate No. 3950



DOG HOUSE & FUEL
STORAGE - OUTSIDE
GUY WIRE
PERIMETER

ROBERT L. BAYLESS
John S. Dashko #1
NE/4SE/4 Sec. 11, T24N, R7W
Rio Arriba County, New Mexico



RIGS 3, 4, & 6

SURFACE WELL CONTROL EQUIPMENT -

ROBERT L. BAYLESS

John S. Dashko #1

NE/4SE/4 Sec. 11, T24N, R7W

Rio Arriba County, New Mexico

ROBERT L. BAYLESS

APPROVED BY:

SCALE:

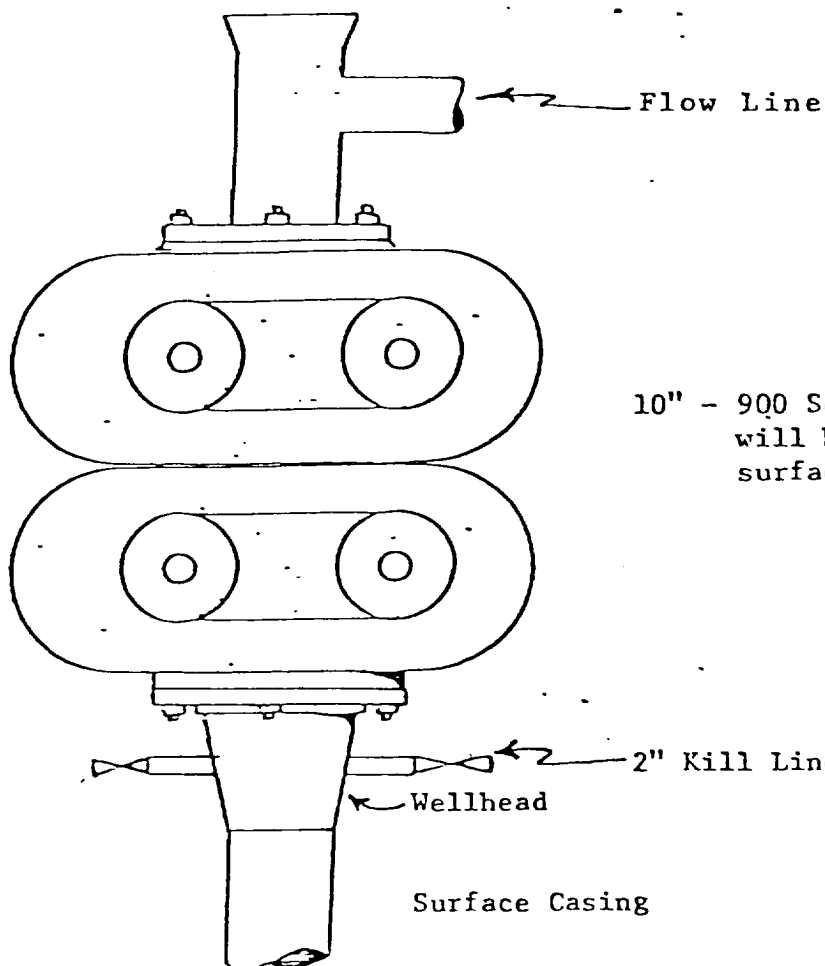
DATE:

DRAWN BY

REVISED

SCHEMATIC

DRAWING NUMBER



10" - 900 Series Hydraulic Double Ram BOP which will be tested to 500 PSIG after setting of surface casing

2" Kill Line with 2000 WOG Ball Valve

Surface Casing



STATE OF NEW MEXICO
ENERGY AND MINERALS DEPARTMENT
OIL CONSERVATION DIVISION

TONY ANAYA
GOVERNOR

POST OFFICE BOX 2088
STATE LAND OFFICE BUILDING
SANTA FE, NEW MEXICO 87501
(505) 827-5800

August 16, 1983

Robert L. Bayless
P.O. Box 1541
Farmington, NM 87499

Attention: Kevin H. McCord

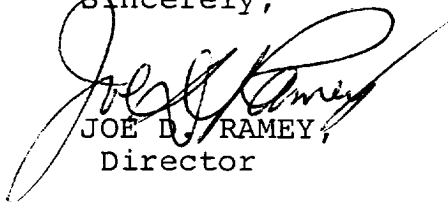
Administrative Order NSL-1726

Gentlemen:

Reference is made to your application for a non-standard location for your John S. Dashko Well No. 1 to be located 2510 feet from the South line and 790 feet from the East line of Section 11, Township 24 North, Range 7 West, Gallup Oil, Rio Arriba County, New Mexico.

By authority granted me under the provisions of Rule 104 F of the Division Rules and Regulations, the above-described unorthodox location is hereby approved.

Sincerely,


JOE D. RAMEY,
Director

JDR/RLS/dp

cc: Oil Conservation Division - Aztec
Oil & Gas Engineering Committee - Hobbs
Minerals Management Service - Artesia

RECEIVED
AUG 19 1983
OIL CON. DIV.
DIST. 3