

UNITED STATES
DEPARTMENT OF THE INTERIOR
GEOLOGICAL SURVEY

APPLICATION FOR PERMIT TO DRILL, DEEPEN, OR PLUG BACK

1a. TYPE OF WORK

DRILL ☒DEEPEN ☐PLUG BACK ☐

b. TYPE OF WELL

OIL
WELL ☒GAS
WELL ☐OTHER ☐SINGLE
ZONE ☒MULTIPLE
ZONE ☐

2. NAME OF OPERATOR

Mobil Producing TX & N.M. Inc.

3. ADDRESS OF OPERATOR

Nine Greenway Plaza, Suite 2700, Houston, TX. 77046

4. LOCATION OF WELL (Report location clearly and in accordance with any State requirements.)*

At surface

1810' FNL & 1084' FWL, Sec. 16, T24N, R3W

At proposed prod. zone

Same as surface

14. DISTANCE IN MILES AND DIRECTION FROM NEAREST TOWN OR POST OFFICE*

50 miles Southeast from Farmington

15. DISTANCE FROM PROPOSED*

LOCATION TO NEAREST
PROPERTY OR LEASE LINE, FT.
(Also to nearest drig. unit line, if any)

1084'

18. DISTANCE FROM PROPOSED LOCATION*

TO NEAREST WELL, DRILLING, COMPLETED,
OR APPLIED FOR, ON THIS LEASE, FT.

2621' South

to Well #11

16. NO. OF ACRES IN LEASE

26,365.43

19. PROPOSED DEPTH

8,000'

17. NO. OF ACRES ASSIGNED
TO THIS WELL

160

20. ROTARY OR CABLE TOOLS

Rotary

21. ELEVATIONS (Show whether DF, RT, GR, etc.)

6950' - GR

22. APPROX. DATE WORK WILL START*

December 1, 1980

23.

PROPOSED CASING AND CEMENTING PROGRAM

SIZE OF HOLE	SIZE OF CASING	WEIGHT PER FOOT	SETTING DEPTH	QUANTITY OF CEMENT
17-1/2"	12-3/4"*	45.51# H-40	0-400'	1. Circulate to surface w/300 sx.
11"	8-5/8"*	24# S-80	0-3100'	2. Circulate to surface w/900 sx.
		28# S-80	3100-3900'	
7-7/8"	5-1/2"*	15.5# K-55	0-7000'	3. Circulate to Approx. 3800'
		17# K-55	7000-7700'	w/950 sx. in two stages

*All casing will be new.

CEMENTING PROGRAM

1. Class B with 2% CaCl₂.

3. Lite weight & Class B

MUD PROGRAM

Depth Type of Mud

0-400'

Spud Mud

Weight

9.0 - 9.2

Viscosity

35-45

ph

9+

Water Loss

NC

400'- TD Fresh Water Gel

8.8

35-40

9+

10 cc's

BLOWOUT PREVENTER PROGRAM

See attachment

LOGGING PROGRAM: Type

IES

FDL/CNL

Depth

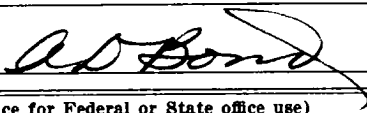
Surf. to TD

Surf. to TD

IN ABOVE SPACE DESCRIBE PROPOSED PROGRAM: If proposal is to deepen or plug back, give data on present productive zone and proposed new productive zone. If proposal is to drill or deepen directionally, give pertinent data on subsurface locations and measured and true vertical depths. Give blowout preventer program, if any.

24.

SIGNED



TITLE

Regulatory Engineering
Coordinator II

DATE October 22, 1980

(This space for Federal or State office use)

PERMIT NO.

APPROVAL DATE

APPROVED BY

TITLE

CONDITIONS OF APPROVAL, IF ANY:

*See Instructions On Reverse Side

5. LEASE DESIGNATION AND SERIAL NO.

Santa Fe 078913

6. IF INDIAN, ALLOTTEE OR TRIBE NAME

7. UNIT AGREEMENT NAME

Lindrith B Unit

8. FARM OR LEASE NAME

9. WELL NO.

14

10. FIELD AND POOL, OR WILDCAT

Chacon-Dakota Associated

11. SEC., T., R., M., OR BLK.
AND SURVEY OR AREA

Sec. 16, T24N, R3W

12. COUNTY OR PARISH

Rio Arriba

13. STATE

NM

NEW MEXICO OIL CONSERVATION COMMISSION
WELL LOCATION AND ACREAGE DEDICATION PLAT

Form O-100
Supersedes C-128
Effective 1-1-65

All distances must be from the outer boundaries of the Section.

Operator Mobil Producing TX. & N.M. Inc.			Lease Lindrith B Unit		Well No. 14
Unit Letter E	Section 16	Township 24N	Range 3W	County Rio Arriba	
Actual Footage Location of Well: 1810 feet from the North line and 1084 feet from the West line					
Ground Level Elev. 6950'	Producing Formation Dakota	Pool Chacon-Dakota Associated		Dedicated Acreage: 160 Acres	

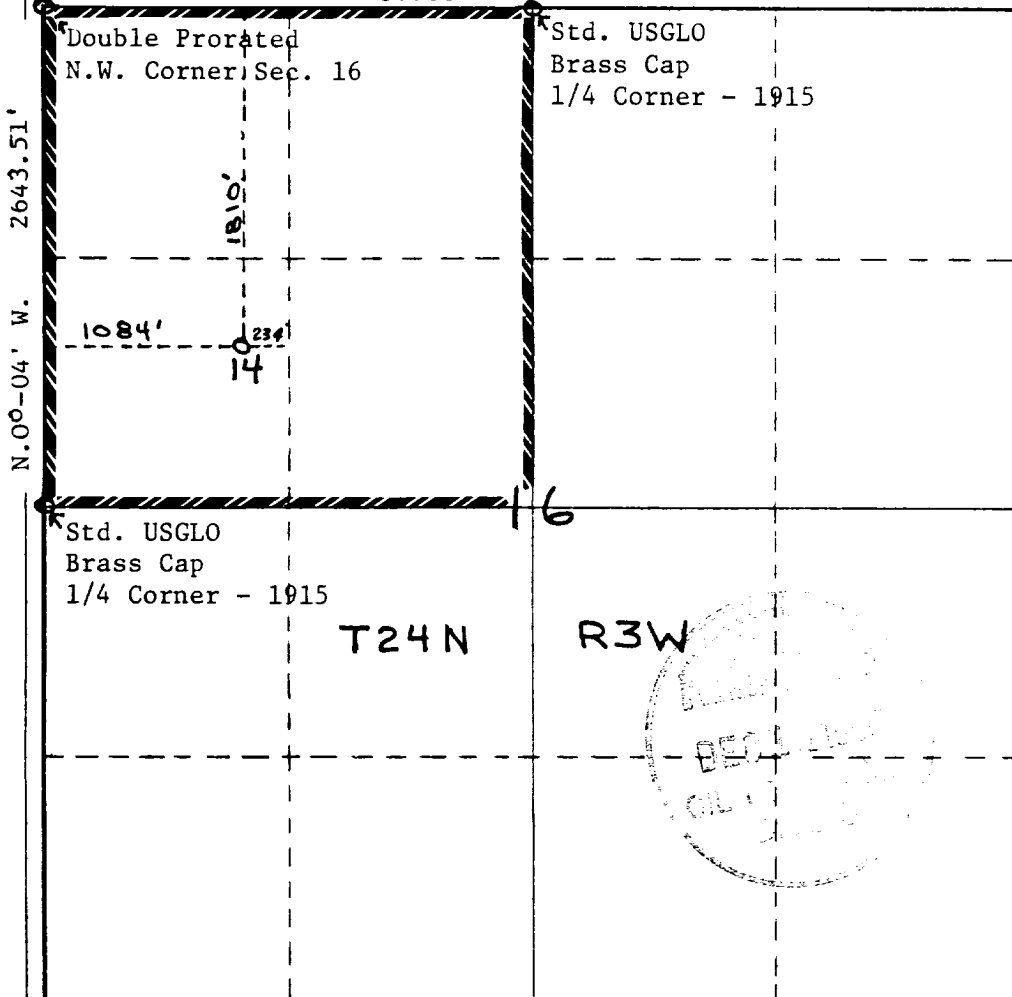
1. Outline the acreage dedicated to the subject well by colored pencil or hachure marks on the plat below.
2. If more than one lease is dedicated to the well, outline each and identify the ownership thereof (both as to working interest and royalty).
3. If more than one lease of different ownership is dedicated to the well, have the interests of all owners been consolidated by communitization, unitization, force-pooling, etc?

☒ Yes ☐ No If answer is "yes," type of consolidation Unitization

If answer is "no," list the owners and tract descriptions which have actually been consolidated. (Use reverse side of this form if necessary.)

No allowable will be assigned to the well until all interests have been consolidated (by communitization, unitization, forced-pooling, or otherwise) or until a non-standard unit, eliminating such interests, has been approved by the Commission.

N. 89° - 50' E. 2636.08'



CERTIFICATION

I hereby certify that the information contained herein is true and complete to the best of my knowledge and belief.

A. D. Bond

Name

A. D. Bond

Position Regulatory

Engineering Coordinator II

Company Mobil Producing TX. & N.M. Inc.

Date

October 22, 1980

I hereby certify that the well location shown on this plat was plotted from field notes of actual surveys made by me or under my supervision, and that the same is true and correct to the best of my knowledge and belief.

H. A. Carson, Jr.

Date Surveyed

September 22, 1980

Registered Professional Engineer and/or Land Surveyor

H. A. Carson, Jr.

Certificate No.

5063