



STATE OF NEW MEXICO  
ENERGY AND MINERALS DEPARTMENT  
OIL CONSERVATION DIVISION

December 8, 1980

BRUCE KING  
GOVERNOR

LARRY KEHOE  
SECRETARY

POST OFFICE BOX 2088  
STATE LAND OFFICE BUILDING  
SANTA FE, NEW MEXICO 87501  
(505) 827-2434

Mobil Producing Texas &  
New Mexico Inc.  
Nine Greenway Plaza  
Suite 2700  
Houston, Texas 77046



Administrative Order NSL-1289

Gentlemen:

Reference is made to your application for a non-standard location for your Lindrith B Unit Well No. 14 to be located 1810 feet from the North line and 1084 feet from the West line of Section 16, Township 24 North, Range 3 West, NMPM Chacon-Dakota Associated Pool, Rio Arriba County, New Mexico.

By authority granted me under the provisions of Rule 2(c) of Order No. R-5353, the above-described unorthodox location is hereby approved.

Sincerely,

JOE D. RAMEY,  
Director

JDR/RLS/dr

cc: Oil Conservation Division - Aztec  
Oil & Gas Engineering Committee - Hobbs  
U. S. Geological Survey - Farmington

OIL CONSERVATION COMMISSION  
Cyten DISTRICT

OIL CONSERVATION COMMISSION  
BOX 2088  
SANTA FE, NEW MEXICO

DATE November 22, 1980

RE: Proposed MC \_\_\_\_\_  
Proposed DHC \_\_\_\_\_  
Proposed NSL   x   \_\_\_\_\_  
Proposed SWD \_\_\_\_\_  
Proposed WFX \_\_\_\_\_  
Proposed PMX \_\_\_\_\_

Gentlemen:

I have examined the application dated November 14, 1980  
for the Mobil P S. N. M. Dr. Lindrich B Unit #14 E-16-2410-3w  
Operator Lease and Well No. Unit, S-T-R

and my recommendations are as follows:

Approve  
\_\_\_\_\_  
\_\_\_\_\_  
\_\_\_\_\_  
\_\_\_\_\_  
\_\_\_\_\_

Yours very truly,

Frank J. Chang

# Mobil Producing Texas & New Mexico Inc.

NINE GREENWAY PLAZA—SUITE 2701  
HOUSTON, TEXAS 77046

November 10, 1980

New Mexico Energy & Minerals Department (3)  
Oil Conservation Division  
State Land Office Building  
P.O. Box 2088  
Santa Fe, New Mexico 87501

7.01  
UNORTHODOX LOCATION  
MOBIL PRODUCING TX. & N.M. INC.  
LINDRITH B UNIT  
WELL #14  
CHACON-DAKOTA ASSOCIATED POOL  
RIO ARriba COUNTY, NEW MEXICO

Gentlemen:

Mobil Producing TX. & N.M. Inc. (MPTM) respectfully requests permission to drill the subject well at an unorthodox location because of a gulch which is 25 feet wide and 20 feet deep. This proposed well location was moved in an easterly direction which caused it to be less than 330 feet from an inner subdivision line as required by Rule 2(b) of Order No. R-5353.

Proposed well #14 will be located as follows:

1810' from the North line and  
1084' from the West line of  
Sec. 16, T24N, R3W  
Rio Arriba County, New Mexico

In support of this request, the following items are submitted:

1. Federal Form 9-331C - "Application to Drill"
2. Form C-102 - "Well Location and Acreage Dedication Plat"
3. Plat showing offset lease owners and topography

MPTM respectfully requests that this unorthodox well location be approved administratively as provided for in Rule 2(c) of Order No. R-5353.



**Mobil**

Railroad Commission of Texas

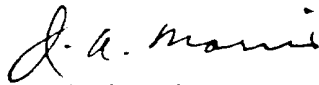
-2-

November 10, 1980

A copy of this letter with attachments is being sent to the offset operator by certified mail as their notice of this application and request for their waiver of objection. The offset operator is:

Arco Oil & Gas Company  
P.O. Box 5540  
Denver, Colorado 80217

Yours very truly,



J.A. Morris  
Regulatory Engineering  
Supervisor

LSHall/jrs

Attachments

cc: District Supervisor - Aztec ✓  
USGS - Farmington  
Offset Operators

UNITED STATES  
DEPARTMENT OF THE INTERIOR  
GEOLOGICAL SURVEY

## APPLICATION FOR PERMIT TO DRILL, DEEPEN, OR PLUG BACK

## 1a. TYPE OF WORK

DRILL ☒DEEPEN ☐PLUG BACK ☐

## b. TYPE OF WELL

OIL  
WELL ☒GAS  
WELL ☐

OTHER

SINGLE  
ZONE ☒MULTIPLE  
ZONE ☐

## 2. NAME OF OPERATOR

Mobil Producing TX &amp; N.M. Inc.

## 3. ADDRESS OF OPERATOR

Nine Greenway Plaza, Suite 2700, Houston, TX. 77046

## 4. LOCATION OF WELL (Report location clearly and in accordance with any State requirements.)

At surface

1810' FNL &amp; 1084' FWL, Sec. 16, T24N, R3W

At proposed prod. zone

Same as surface

## 14. DISTANCE IN MILES AND DIRECTION FROM NEAREST TOWN OR POST OFFICE\*

50 miles Southeast from Farmington

## 15. DISTANCE FROM PROPOSED\*

LOCATION TO NEAREST  
PROPERTY OR LEASE LINE, FT.  
(Also to nearest drig. unit line, if any)

1084'

## 16. NO. OF ACRES IN LEASE

26,365.43

17. NO. OF ACRES ASSIGNED  
TO THIS WELL

160

## 18. DISTANCE FROM PROPOSED LOCATION\*

TO NEAREST WELL, DRILLING, COMPLETED,  
OR APPLIED FOR, ON THIS LEASE, FT.2621' South  
to Well #11

## 19. PROPOSED DEPTH

8,000'

## 20. ROTARY OR CABLE TOOLS

Rotary

## 21. ELEVATIONS (Show whether DF, RT, GR, etc.)

6950' - GR

## 22. APPROX. DATE WORK WILL START\*

December 1, 1980

## 23. PROPOSED CASING AND CEMENTING PROGRAM

SIZE OF HOLE	SIZE OF CASING	WEIGHT PER FOOT	SETTING DEPTH	QUANTITY OF CEMENT
17-1/2"	12-3/4"*	45.51# H-40	0-400'	1. Circulate to surface w/300 sx.
11"	8-5/8"*	24# S-80	0-3100'	2. Circulate to surface w/900 sx.
		28# S-80	3100-3900'	
7-7/8"	5-1/2"*	15.5# K-55	0-7000'	3. Circulate to Approx. 3800'
		17# K-55	7000-7700'	w/950 sx. in two stages

\*All casing will be new.

## CEMENTING PROGRAM

1. Class B with 2% CaCl<sub>2</sub>.

2. Lite weight &amp; Class B

3. Lite weight &amp; Class B

## MUD PROGRAM

Depth	Type of Mud	Weight	Viscosity	ph	Water Loss
0-400'	Spud Mud	9.0 - 9.2	35-45	9+	NC
400'- TD	Fresh Water Gel	8.8	35-40	9+	10 cc's

## BLOWOUT PREVENTER PROGRAM

See attachment

## LOGGING PROGRAM: Type

IES

FDL/CNL

## Depth

Surf. to TD

Surf. to TD

IN ABOVE SPACE DESCRIBE PROPOSED PROGRAM: If proposal is to deepen or plug back, give data on present productive zone and proposed new productive zone. If proposal is to drill or deepen directionally, give pertinent data on subsurface locations and measured and true vertical depths. Give blowout preventer program, if any.

## 24.

SIGNED

TITLE

Regulatory Engineering

Coordinator II

DATE October 22, 1980

(This space for Federal or State office use)

PERMIT NO.

APPROVAL DATE

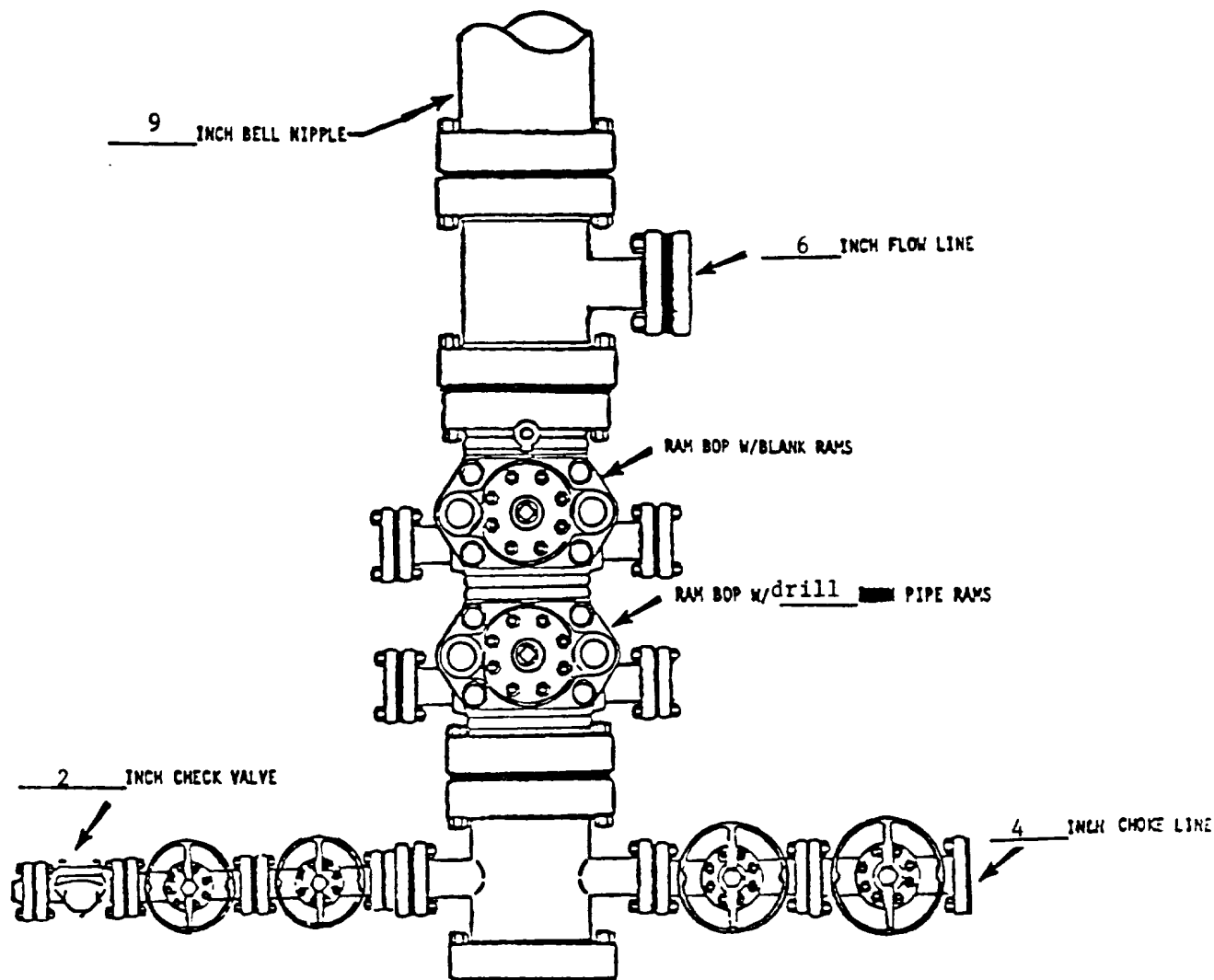
APPROVED BY

TITLE

DATE

CONDITIONS OF APPROVAL, IF ANY:

\*See Instructions On Reverse Side



BOP rams will be actuated on each trip of drill pipe and will be tested before drilling the plug on each casing string.

NOTE: ALL VALVES ARE METAL-TO-METAL SEAL AND FLANGED. ALL COMPONENTS MUST MEET ABOVE MINIMUM PRESSURE RATINGS. ALL COMPONENTS TO BE TESTED TO RATED PRESSURE AFTER ASSEMBLY AND BEFORE FURTHER DOWNHOLE OPERATIONS MAY BE CONDUCTED.

<b>Mobil Producing</b> <b>Texas &amp; New Mexico Inc.</b> Houston, Texas		Scale
Well # <u>14</u> <u>Lindrith B Unit</u> (Lease)		Date
Rio Arriba County, NM State		Drawn
Blowout Preventer Assembly		Checked
( 9 IN. 3000 PSI WP*)		Approved
		Revised

**NEW MEXICO OIL CONSERVATION COMMISSION  
WELL LOCATION AND ACREAGE DEDICATION PLAT**

Form O-101  
Supersedes O-128  
Effective 1-1-65

All distances must be from the outer boundaries of the Section.

Operator <b>Mobil Producing TX. &amp; N.M. Inc.</b>			Lease <b>Lindrith B Unit</b>		Well No. <b>14</b>
Unit Letter <b>E</b>	Section <b>16</b>	Township <b>24N</b>	Range <b>3W</b>	County <b>Rio Arriba</b>	
Actual Footage Location of Well:					
<b>1810</b> feet from the <b>North</b>		<b>1084</b> feet from the <b>West</b>			
Ground Level Elev. <b>6950'</b>	Producing Formation <b>Dakota</b>	Poc <b>Chacon-Dakota Associated</b>	Dedicated Acreage: <b>160</b> Acres		

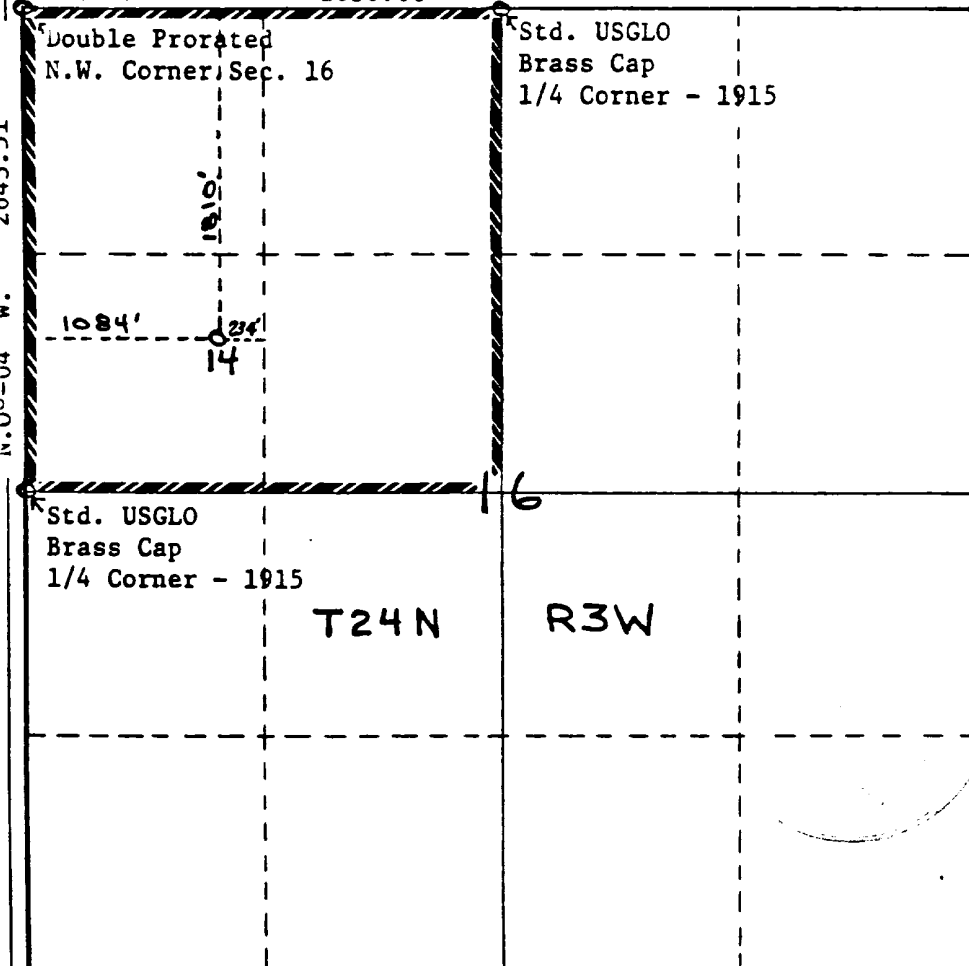
1. Outline the acreage dedicated to the subject well by colored pencil or hachure marks on the plat below.
2. If more than one lease is dedicated to the well, outline each and identify the ownership thereof (both as to working interest and royalty).
3. If more than one lease of different ownership is dedicated to the well, have the interests of all owners been consolidated by communitization, unitization, force-pooling, etc?

☒ Yes    ☐ No    If answer is "yes," type of consolidation: Unitization

If answer is "no," list the owners and tract descriptions which have actually been consolidated. (Use reverse side of this form if necessary.) \_\_\_\_\_

No allowable will be assigned to the well until all interests have been consolidated (by communitization, unitization, forced-pooling, or otherwise) or until a non-standard unit, eliminating such interests, has been approved by the Commission.

N. 89° - 50' E. 2636.08'



**CERTIFICATION**

I hereby certify that the information contained herein is true and complete to the best of my knowledge and belief.

*A. D. Bond*

Name  
**A. D. Bond**  
Position **Regulatory Engineering Coordinator II**  
Company **Mobil Producing TX. & N.M. Inc.**

Date  
**October 22, 1980**

I hereby certify that the well location shown on this plat was plotted from field notes of actual surveys made by me or under my supervision, and that the same is true and correct to the best of my knowledge and belief.

*H. A. Carson, Jr.*

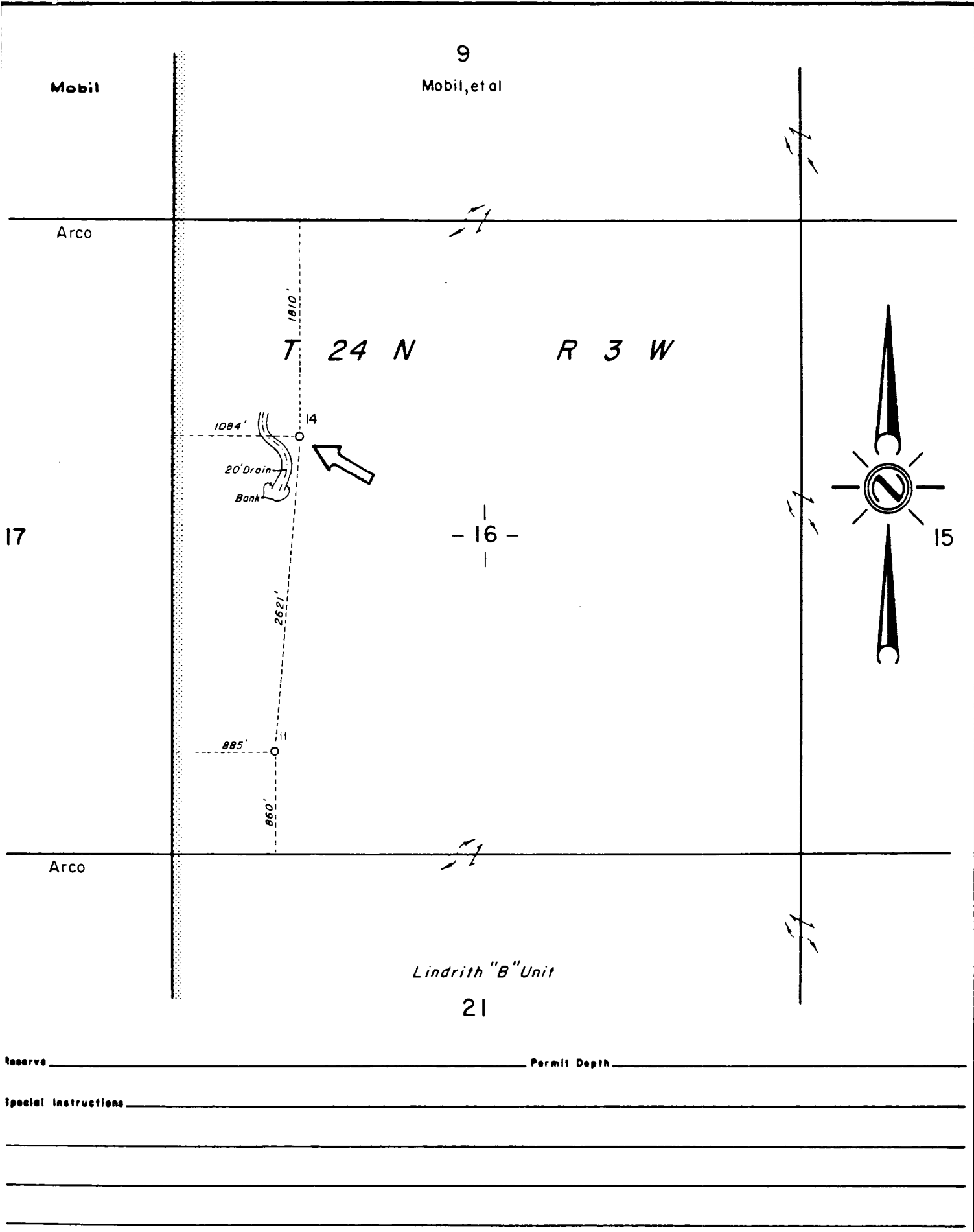
Date Surveyed  
**September 22, 1980**

Registered Professional Engineer and/or Land Surveyor

**H. A. Carson, Jr.**

Certificate No.

**5063**



THE STATE OF TEXAS  
COUNTY OF HARRIS

I hereby certify that this plat truly represents conditions as they actually exist on this lease; that said plat which is drawn to the scale indicated hereon, is to the best of my knowledge true and correct; that it accurately shows said lease with all wells on same; that number and locations of said wells are as indicated hereon; and that this plat correctly reflects all pertinent and required data.

"Partial Plat"

**Mobil Producing Texas & New Mexico Inc.**  
**Houston, Texas**

LEASE Lindrith "B" Unit

WELL NO. 14 DATE 11-10- 1980

LEASE NO. \_\_\_\_\_

TOTAL ACRES IN LEASE 26,365.43 ACRES COVERED BY PLAT \_\_\_\_\_

DESCRIPTION Section 16, T24N-R3W of 26,365.43

Acre Unit

50 Miles SE of Farmington

Rio Arriba County, New Mexico

DRAWN T. Roy  
SCALE 1"=1000'

DATE 5-20-80  
FILE NO. 20

FIELD Chacon - Dakota



