

UNITED STATES
DEPARTMENT OF THE INTERIOR
GEOLOGICAL SURVEY

APPLICATION FOR PERMIT TO DRILL, DEEPEN, OR PLUG BACK

1a. TYPE OF WORK
DRILL ☒ DEEPEN ☐ PLUG BACK ☐

b. TYPE OF WELL
OIL WELL ☒ GAS WELL ☐ OTHER ☐ SINGLE ZONE ☒ MULTIPLE ZONE ☐

2. NAME OF OPERATOR

Mobil Producing TX. & N.M. Inc.

3. ADDRESS OF OPERATOR

Nine Greenway Plaza, Suite 2700, Houston, TX 77046

4. LOCATION OF WELL (Report location clearly and in accordance with any State requirements.)*
At surface 1157' FSL & 2293' FEL, Sec. 21, T24N, R3W

At proposed prod. zone

Same as surface

14. DISTANCE IN MILES AND DIRECTION FROM NEAREST TOWN OR POST OFFICE*

50 miles Southeast from Farmington

15. DISTANCE FROM PROPOSED*

LOCATION TO NEAREST
PROPERTY OR LEASE LINE, FT.
(Also to nearest drg. unit line, if any) 1157'

16. NO. OF ACRES IN LEASE

26,365.43

17. NO. OF ACRES ASSIGNED
TO THIS WELL

160

18. DISTANCE FROM PROPOSED LOCATION*
TO NEAREST WELL, DRILLING, COMPLETED,
OR APPLIED FOR, ON THIS LEASE, FT.

1950' WSW
to Well #3

19. PROPOSED DEPTH

8,000'

20. ROTARY OR CABLE TOOLS

Rotary

21. ELEVATIONS (Show whether DF, RT, GR, etc.)

7064' - GR

22. APPROX. DATE WORK WILL START*

Dec. 1, 1980

23. PROPOSED CASING AND CEMENTING PROGRAM

SIZE OF HOLE	SIZE OF CASING	WEIGHT PER FOOT	SETTING DEPTH	QUANTITY OF CEMENT
17-1/2"	12-3/4" *	45.51# H-40	0 - 400'	1. Circulate to surface w/300 sx.
11"	8-5/8" *	24# S-80	0 - 3100'	2. Circulate to surface w/900 sx.
		28# S-80	3100 - 3900'	
7-7/8"	5-1/2" *	15.5# K-55	0 - 7000'	3. Circulate to approx. 3800'
		17# K-55	7000 - 7700'	w/950 sx. in two stages

*All casing will be new.

CEMENTING PROGRAM

1. Class B with 2% CaCl₂.

2. Lite weight & Class B

3. Lite weight & Class B

MUD PROGRAM

Depth	Type of Mud	Weight	Viscosity	ph	Water Loss
0 - 400'	Spud mud	9.0 - 9.2	35-45	9+	NC
400' - TD	Fresh Water Gel	8.8	35-40	9+	

BLOWOUT PREVENTER PROGRAM

See Attachment

LOGGING PROGRAM

Type
IES
FDL/CNL

Depth

Surf. to
Surf.

IN ABOVE SPACE DESCRIBE PROPOSED PROGRAM: If proposal is to deepen or plug back, give data on present productive zone and proposed new productive zone. If proposal is to drill or deepen directionally, give pertinent data on subsurface locations and measured and true vertical depths. Give blowout preventer program, if any.

24. Regulatory Engineering
Coordinator II
SIGNED [Signature] TITLE Regulatory Engineering Coordinator II DATE November 11, 1980

(This space for Federal or State office use)

PERMIT NO. APPROVED
AS AMENDED

APPROVAL DATE

APPROVED BY [Signature]
CONDITIONS OF APPROVAL DEC 15 1980
FOR JAMES F. SIMS
DISTRICT ENGINEER

TITLE

DATE

*See Instructions On Reverse Side

5. LEASE DESIGNATION AND SERIAL NO.

Santa Fe 078913

6. IF INDIAN, ALLOTTEE OR TRIBE NAME

7. UNIT AGREEMENT NAME

Lindrith B Unit

8. FARM OR LEASE NAME

9. WELL NO.

15

10. FIELD AND POOL, OR WILDCAT

Chacon-Dakota Associated

11. SEC., T., R., M., OR BLK.
AND SURVEY OR AREA

Sec. 21, T24N, R3W

12. COUNTY OR PARISH 13. STATE

Rio Arriba

NM

Instructions

General: This form is designed for submitting proposals to perform certain well operations, as indicated, on all types of lands and leases for appropriate action by either a Federal or a State agency or both, pursuant to applicable Federal and/or State laws and regulations. Any necessary special instructions concerning the use of this form and the number of copies to be submitted, particularly with regard to local, area, or regional procedures and practices, either are shown below or will be issued by, or may be obtained from, the local Federal and/or State office.

Item 1: If the proposal is to redrill to the same reservoir at a different subsurface location or to a new reservoir, use this form with appropriate notations. Consult applicable State or Federal regulations concerning subsequent work proposals or reports on the well.

Item 4: If there are no applicable State requirements, locations on Federal or Indian land should be described in accordance with Federal requirements. Consult local State or Federal office for specific instructions.

Item 14: Needed only when location of well cannot readily be found by road from the land or lease description. A plat, or plats, separate or on this reverse side, showing the roads to, and the surveyed location of, the well, and any other required information, should be furnished when required by Federal or State agency offices.

Items 15 and 18: If well is to be, or has been directionally drilled, give distances for subsurface location of hole in any present or objective production zone.

Item 22: Consult applicable Federal or State regulations, or appropriate officials, concerning approval of the proposal before operations are started.

NEW MEXICO OIL CONSERVATION COMMISSION
WELL LOCATION AND ACREAGE DEDICATION PLAT

Form O-102
Supersedes C-128
Effective 1-1-65

All distances must be from the outer boundaries of the Section.

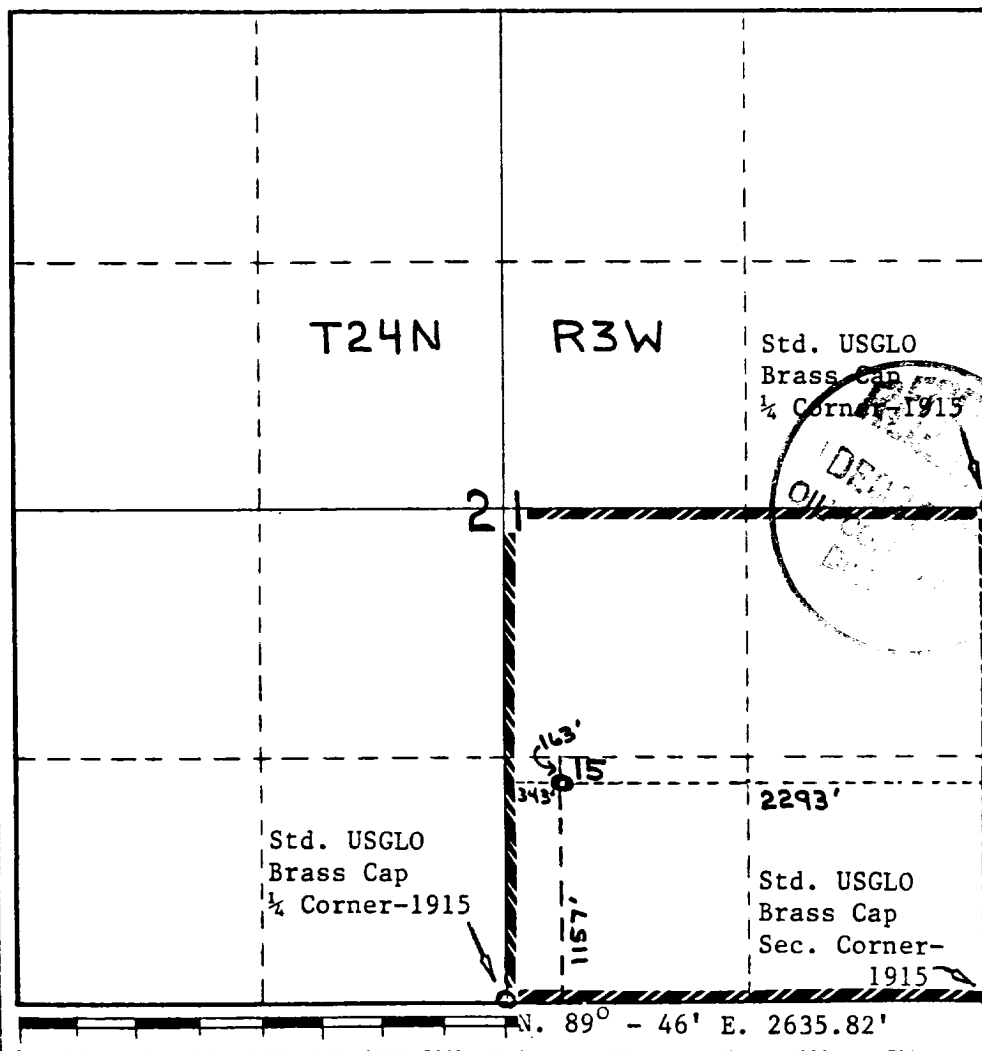
Operator Mobil Producing TX. & N.M. Inc.			Lease Lindrith B Unit		Well No. 15
Unit Letter 0	Section 21	Township 24N	Range 3W	County Rio Arriba	
Actual Footage Location of Well: 1157' feet from the South line and 2293' feet from the East line					
Ground Level Elev. 7064'	Producing Formation Dakota		Poc Chacon-Dakota Associated	Dedicated Acreage: 160 Acres	

1. Outline the acreage dedicated to the subject well by colored pencil or hatchure marks on the plat below.
2. If more than one lease is dedicated to the well, outline each and identify the ownership thereof (both as to working interest and royalty).
3. If more than one lease of different ownership is dedicated to the well, have the interests of all owners been consolidated by communitization, unitization, force-pooling, etc?

☒ Yes ☐ No If answer is "yes," type of consolidation Unitization

If answer is "no," list the owners and tract descriptions which have actually been consolidated. (Use reverse side of this form if necessary.)

No allowable will be assigned to the well until all interests have been consolidated (by communitization, unitization, forced-pooling, or otherwise) or until a non-standard unit, eliminating such interests, has been approved by the Commission.



CERTIFICATION

I hereby certify that the information contained herein is true and complete to the best of my knowledge and belief.

A.D. Bond

Name
A.D. Bond
Position **Regulatory Engineering Coordinator II**
Company **Mobil Producing TX. & N.M. Inc.**

Date
November 11, 1980

I hereby certify that the well location shown on this plat was plotted from field notes of actual surveys made by me or under my supervision, and that the same is true and correct to the best of my knowledge and belief.

H.A. Carson, Jr.
Date Surveyed
November 7, 1980

Registered Professional Engineer and/or Land Surveyor

H.A. Carson, Jr.

Certificate No.

5063

