

OIL CONSERVATION COMMISSION  
Alto DISTRICT

OIL CONSERVATION COMMISSION  
BOX 2088  
SANTA FE, NEW MEXICO

DATE November 26, 1980

RE: Proposed MC \_\_\_\_\_  
Proposed DHC \_\_\_\_\_  
Proposed NSL   a   \_\_\_\_\_  
Proposed SWD \_\_\_\_\_  
Proposed WFX \_\_\_\_\_  
Proposed PMX \_\_\_\_\_

Gentlemen:

I have examined the application dated November 24, 1980  
for the Mobil P. S. M. M. L. Linhart Bld. # 15 C-21-24N-3W  
Operator Lease and Well No. Unit, S-T-R

and my recommendations are as follows:

Docket for hearing. I have talked to Mobil, the  
landowner, and Joe. We probably need to subpoena  
the landowner. Dr. Pete Roper DUM 898-6021

Yours very truly,

Frank J. Chang

# Mobil Producing Texas & New Mexico Inc.

NINE GREENWAY PLAZA—SUITE 2700  
HOUSTON, TEXAS 77046

November 19, 1980

New Mexico Energy & Minerals Department (3)  
Oil Conservation Division  
State Land Office Building  
P.O. Box 2088  
Santa Fe, New Mexico 87501

7.01  
UNORTHODOX LOCATION  
MOBIL PRODUCING TX. & N.M. INC.  
LINDRITH B UNIT  
WELL #15  
CHACON-DAKOTA ASSOCIATED POOL  
RIO ARriba COUNTY, NEW MEXICO



Gentlemen:

Mobil Producing TX. & N.M. Inc. (MPTM) respectfully requests permission to drill the subject well at an unorthodox location. The location was moved at the landowner's request, because the original location was too close to his cabin. This proposed well location was moved in a north-westerly direction which caused it to be less than 330 feet from an inner subdivision line as required by Rule 2(b) of Order No. R-5353.

Proposed Well #15 will be located as follows:

1157' from the South line and  
2293' from the East line of  
Sec. 21, T24N, R3W  
Rio Arriba County, New Mexico

In support of this request, the following items are submitted:

1. Federal Form 9-331C - "Application to Drill"
2. Form C-102 - "Well Location and Acreage Dedication Plat"
3. Plat showing offset lease owners and topography

MPTM respectfully requests that this unorthodox well location be approved

**Mobil**

New Mexico Energy & Minerals  
Department

-2-

November 19, 1980

administratively as provided for in Rule 2(c) of Order No. R-5353.  
The land on all sides of the 160-acre drilling unit assigned to Well  
#15 is leased by MPTM.

Yours very truly,

J.A. Morris  
Regulatory Engineering  
Supervisor

LSHall/jrs  
Attachments

cc: District Supervisor - Aztec  
USGS - Farmington

UNITED STATES  
DEPARTMENT OF THE INTERIOR  
GEOLOGICAL SURVEY

## APPLICATION FOR PERMIT TO DRILL, DEEPEN, OR PLUG BACK

## 1a. TYPE OF WORK

DRILL ☒DEEPEN ☐PLUG BACK ☐

## b. TYPE OF WELL

OIL  
WELL ☒GAS  
WELL ☐OTHER ☐SINGLE  
ZONE ☒MULTIPLE  
ZONE ☐

## 2. NAME OF OPERATOR

Mobil Producing TX. &amp; N.M. Inc.

## 3. ADDRESS OF OPERATOR

Nine Greenway Plaza, Suite 2700, Houston, TX 77046

## 4. LOCATION OF WELL (Report location clearly and in accordance with any State requirements.)

At surface 1157' FSL &amp; 2293' FEL, Sec. 21, T24N, R3W

At proposed prod. zone

Same as surface

## 14. DISTANCE IN MILES AND DIRECTION FROM NEAREST TOWN OR POST OFFICE\*

50 miles Southeast from Farmington

## 15. DISTANCE FROM PROPOSED\*

LOCATION TO NEAREST

PROPERTY OR LEASE LINE, FT.

(Also to nearest drig. unit line, if any) 1157'

## 16. NO. OF ACRES IN LEASE

26,365.43

## 18. DISTANCE FROM PROPOSED LOCATION\*

TO NEAREST WELL, DRILLING, COMPLETED,

OR APPLIED FOR, ON THIS LEASE, FT.

1950' WSW

to Well #3

## 19. PROPOSED DEPTH

8,000'

## 21. ELEVATIONS (Show whether DF, RT, GR, etc.)

7064' - GR

## 23.

## PROPOSED CASING AND CEMENTING PROGRAM

SIZE OF HOLE	SIZE OF CASING	WEIGHT PER FOOT	SETTING DEPTH	QUANTITY OF CEMENT
17-1/2"	12-3/4" *	45.51# H-40	0 - 400'	1. Circulate to surface w/300 sx.
11"	8-5/8" *	24# S-80	0 - 3100'	2. Circulate to surface w/900 sx.
		28# S-80	3100 - 3900'	
7-7/8"	5-1/2" *	15.5# K-55	0 - 7000'	3. Circulate to approx. 3800'
		17# K-55	7000 - 7700'	w/950 sx. in two stages

\*All casing will be new.

## CEMENTING PROGRAM

1. Class B with 2% CaCl<sub>2</sub>.

2. Lite weight &amp; Class B

3. Lite weight &amp; Class B

## MUD PROGRAM

Depth	Type of Mud	Weight	Viscosity	ph	Water Loss
0 - 400'	Spud mud	9.0 - 9.2	35-45	9+	NC
400' - TD	Fresh Water Gel	8.8	35-40	9+	10 cc's

## BLOWOUT PREVENTER PROGRAM

See Attachment

## LOGGING PROGRAM

Type

IES

FDL/CNL

Depth

Surf. to TD

Surf. to TD

IN ABOVE SPACE DESCRIBE PROPOSED PROGRAM: If proposal is to deepen or plug back, give data on present productive zone and proposed new productive zone. If proposal is to drill or deepen directionally, give pertinent data on subsurface locations and measured and true vertical depths. Give blowout preventer program, if any.

## 24.

Regulatory Engineering

Coordinator II

DATE November 11, 1980

SIGNED

TITLE

(This space for Federal or State office use)

PERMIT NO.

APPROVAL DATE

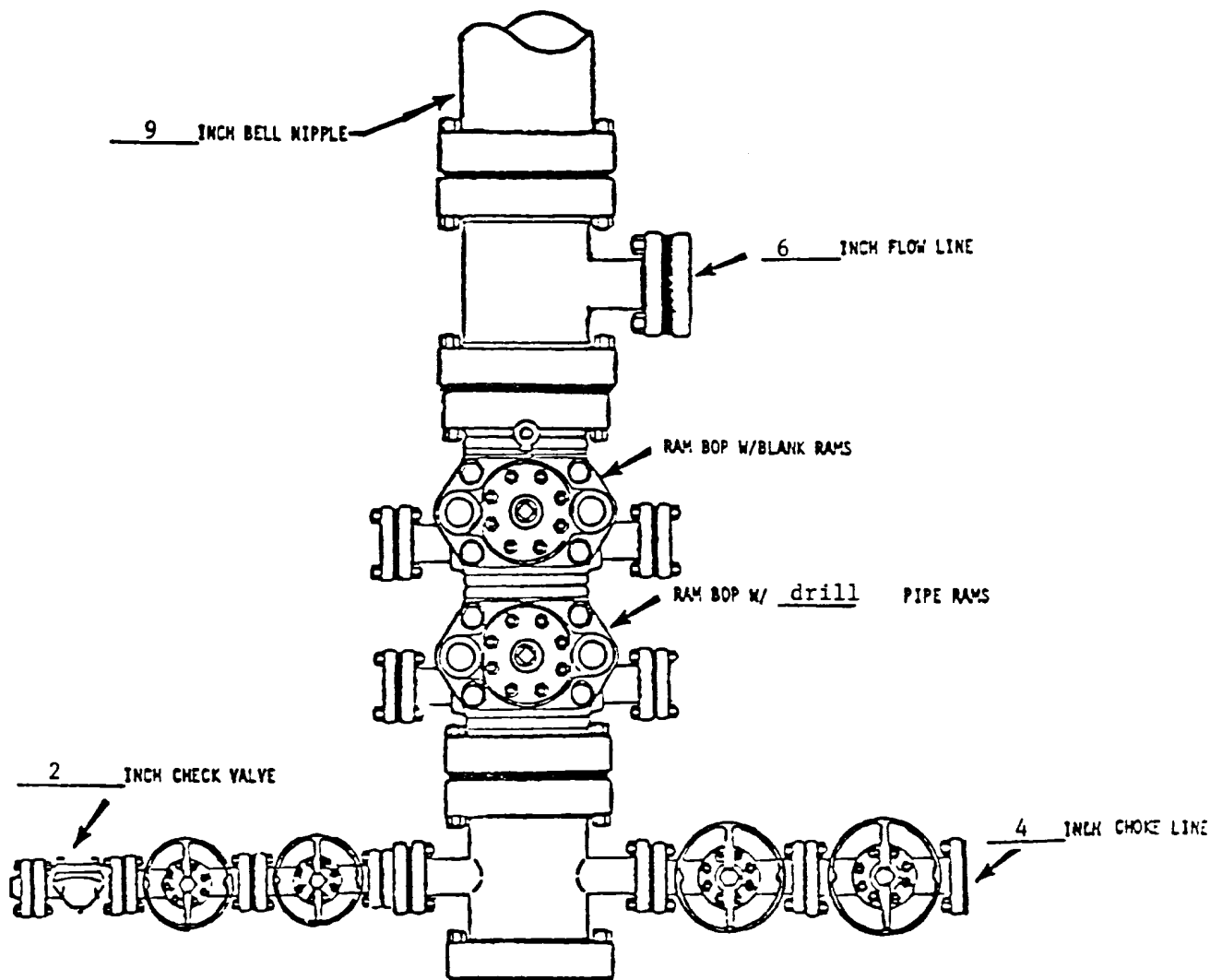
APPROVED BY

TITLE

DATE

CONDITIONS OF APPROVAL, IF ANY:

\*See Instructions On Reverse Side



BOP rams will be actuated on each trip of drill pipe and will be tested before drilling the plug on each casing string.

\*NOTE: ALL VALVES ARE METAL-TO-METAL SEAL AND FLANGED. ALL COMPONENTS MUST MEET ABOVE MINIMUM PRESSURE RATINGS. ALL COMPONENTS TO BE TESTED TO RATED PRESSURE AFTER ASSEMBLY AND BEFORE FURTHER DOWNHOLE OPERATIONS MAY BE CONDUCTED.

<b>Mobil Producing Texas &amp; New Mexico Inc.</b> Houston, Texas		Scale  Date Drawn Checked Approved Revised
Well # <u>15</u> <u>Lindrith B Unit</u> (Lease)		
Rio Arriba <u>County,</u> <u>NM</u> <u>State</u> Blowout Preventer Assembly ( <u>9</u> IN. 3000 PSI WP*)		

NEW MEXICO OIL CONSERVATION COMMISSION  
WELL LOCATION AND ACREAGE DEDICATION PLAT

Form O-102  
Supersedes O-128  
Effective 1-1-65

All distances must be from the outer boundaries of the Section.

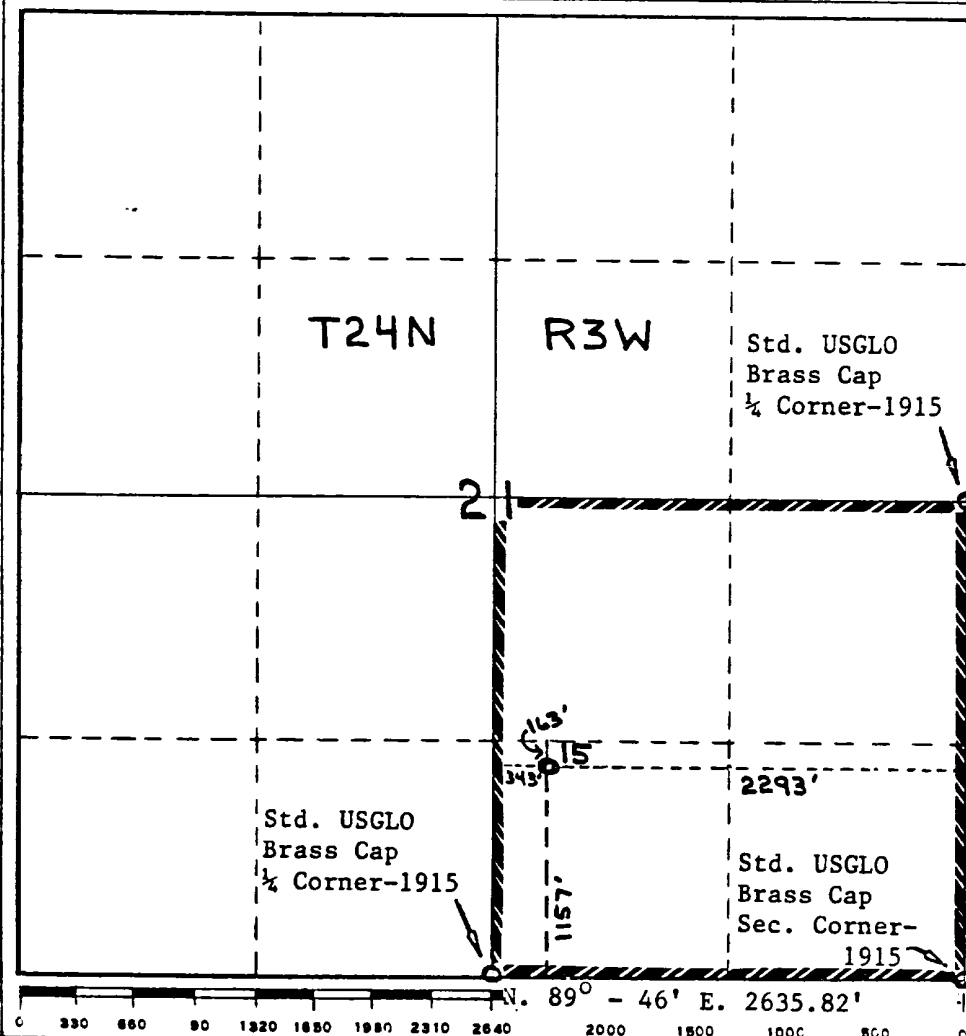
Operator <b>Mobil Producing TX. &amp; N.M. Inc.</b>			Lease <b>Lindrith B Unit</b>		Well No. <b>15</b>
Init Letter <b>0</b>	Section <b>21</b>	Township <b>24N</b>	Range <b>3W</b>	County <b>Rio Arriba</b>	
Actual Footage Location of Well:					
<b>1157'</b> feet from the <b>South</b>		line and <b>2293'</b>		feet from the <b>East</b>	
Ground Level Elev. <b>7064'</b>	Producing Formation <b>Dakota</b>	Pool <b>Chacon-Dakota Associated</b>		Dedicated Acreage: <b>160</b> Acres	

1. Outline the acreage dedicated to the subject well by colored pencil or hachure marks on the plat below.
2. If more than one lease is dedicated to the well, outline each and identify the ownership thereof (both as to working interest and royalty).
3. If more than one lease of different ownership is dedicated to the well, have the interests of all owners been consolidated by communitization, unitization, force-pooling, etc?

☒ Yes ☐ No If answer is "yes," type of consolidation Unitization

If answer is "no," list the owners and tract descriptions which have actually been consolidated. (Use reverse side of this form if necessary.)

No allowable will be assigned to the well until all interests have been consolidated (by communitization, unitization, forced-pooling, or otherwise) or until a non-standard unit, eliminating such interests, has been approved by the Commission.



CERTIFICATION

I hereby certify that the information contained herein is true and complete to the best of my knowledge and belief.

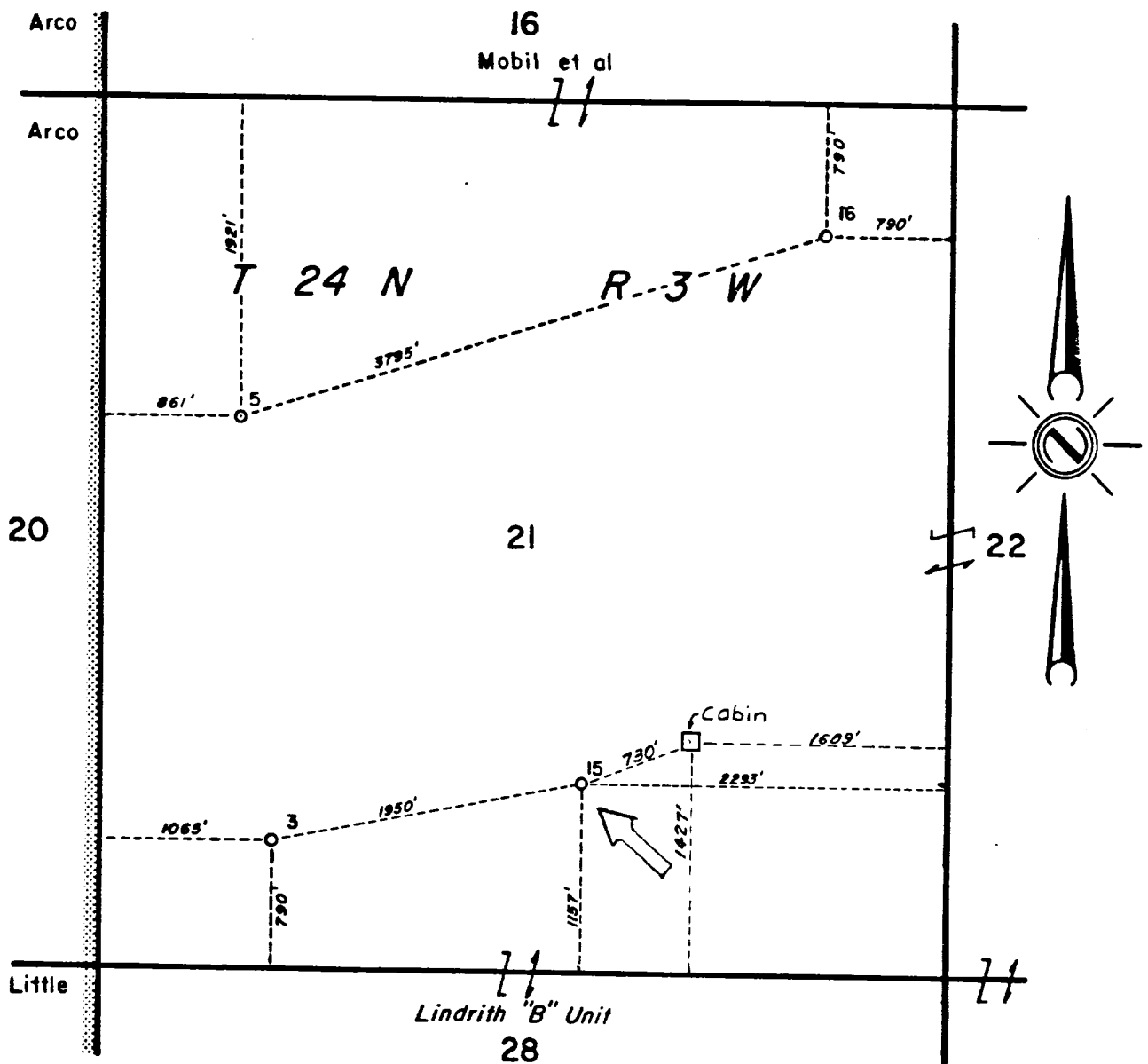
Name  
**A.D. Bond**  
Position **Regulatory Engineering Coordinator II**  
Company **Mobil Producing TX. & N.M. Inc.**  
Date  
**November 11, 1980**

I hereby certify that the well location shown on this plat was plotted from field notes of actual surveys made by me or under my supervision, and that the same is true and correct to the best of my knowledge and belief.

**H.A. Carson, Jr.**  
Date Surveyed  
**November 7, 1980**  
Registered Professional Engineer and/or Land Surveyor

**H.A. Carson, Jr.**  
Certificate No.

**5063**



Reserve \_\_\_\_\_ Permit Depth \_\_\_\_\_

Special Instructions \_\_\_\_\_

\_\_\_\_\_

\_\_\_\_\_

\_\_\_\_\_

THE STATE OF TEXAS  
COUNTY OF HARRIS

I hereby certify that this plat truly represents conditions as they actually exist on this lease; that said plat which is drawn to the scale indicated hereon, is to the best of my knowledge true and correct; that it accurately shows said lease with all wells on same; that number and locations of said wells are as indicated hereon; and that this plat correctly reflects all pertinent and required data.

"Partial Plat"

**Mobil Producing Texas & New Mexico Inc.**  
Houston, Texas

LEASE Lindrith "B" Unit

WELL NO. 15 DATE 11/19/ 1980

DIVISION \_\_\_\_\_ LEASE NO. \_\_\_\_\_

TOTAL ACRES IN LEASE 26,365.43 ACRES COVERED BY PLAT \_\_\_\_\_

DESCRIPTION Section 21, T24N, R3W of 26,365.43

acre unit, 50 mi. SE of Farmington

Rio Arriba County, New Mexico

DRAWN WEK DATE 12-17-79 FIELD Chacon - Dakota

SCALE 1" = 1000' FILE NO. 20 Associated



STATE OF NEW MEXICO  
ENERGY AND MINERALS DEPARTMENT  
OIL CONSERVATION DIVISION

BRUCE KING  
GOVERNOR

LARRY KEHOE  
SECRETARY

December 9, 1980

POST OFFICE BOX 2088  
STATE LAND OFFICE BUILDING  
SANTA FE, NEW MEXICO 87501  
(505) 827-2434



Mobil Producing Texas & New Mexico Inc.  
Nine Greenway Plaza, Suite 2700  
Houston, Texas 77046

Administrative Order NSL-1291

Gentlemen:

Reference is made to your application for a non-standard location for your Lindrith B Unit Well No. 15 to be located 1157 feet from the South line and 2293 feet from the East line of Section 21, Township 24 North, Range 3 West, NMPM, Chacon-Dakota Associated Pool, Rio Arriba County, New Mexico.

By authority granted me under the provisions of Rule 2 C of Order No. R-5353, the above-described unorthodox location is hereby approved.

Sincerely,

JOE D. RAMEY,  
Director

JDR/RLS/dr

cc: Oil Conservation Division - Aztec  
Oil & Gas Engineering Committee - Hobbs  
U. S. Geological Survey - Farmington