

UNITED STATES
DEPARTMENT OF THE INTERIOR
GEOLOGICAL SURVEY

APPLICATION FOR PERMIT TO DRILL, DEEPEN, OR PLUG BACK

1a. TYPE OF WORK

DRILL ☒DEEPEN ☐PLUG BACK ☐

b. TYPE OF WELL

OIL
WELL ☐GAS
WELL ☒

OTHER

SINGLE
ZONE ☒MULTIPLE
ZONE ☐

2. NAME OF OPERATOR

El Paso Exploration Company

3. ADDRESS OF OPERATOR

PO Box 289, Farmington, NM 87401

4. LOCATION OF WELL (Report location clearly and in accordance with any State requirements.)*

At surface

1850'S, 1815'E

At proposed prod. zone

same

14. DISTANCE IN MILES AND DIRECTION FROM NEAREST TOWN OR POST OFFICE*

16 miles northeast of Counselors, NM

15. DISTANCE FROM PROPOSED*

LOCATION TO NEAREST
PROPERTY OR LEASE LINE, FT.
(Also to nearest drlg. unit line, if any)

1815'

16. NO. OF ACRES IN LEASE

2579.3

17. NO. OF ACRES ASSIGNED
TO THIS WELL

E / 321.64

18. DISTANCE FROM PROPOSED LOCATION*
TO NEAREST WELL, DRILLING, COMPLETED,
OR APPLIED FOR, ON THIS LEASE, FT.

800'

19. PROPOSED DEPTH

8150'

20. ROTARY OR CABLE TOOLS

Rotary

21. ELEVATIONS (Show whether DF, RT, GR, etc.)

7214' GL

22. APPROX. DATE WORK WILL START*

23.

PROPOSED CASING AND CEMENTING PROGRAM

| SIZE OF HOLE | SIZE OF CASING | WEIGHT PER FOOT | SETTING DEPTH | QUANTITY OF CEMENT |
|--------------|----------------|-----------------|---------------|-------------------------|
| 12 1/4" | 8 5/8" | 24.0# | 200' | 140 cu.ft. to circulate |
| 7 7/8" | 4 1/2" | 10.5# | 6500' | |
| 7 7/8" | 4 1/2" | 11.6# | 8150' | 1134 cu.ft. - 3 stages |

1st stage - 405 cu.ft. to cover Gallup

2nd stage - 424 cu.ft. to cover Mesa Verde

3rd stage - 305 cu.ft. to cover Ojo Alamo

Selectively perforate and sandwater fracture the Dakota formation.

A 3000 psi WP and 6000 psi test double gate preventer equipped with blind and pipe rams will be used for blow out prevention on this well.

This gas is dedicated.

The E/2 of Section 5 is dedicated to this well.

IN ABOVE SPACE DESCRIBE PROPOSED PROGRAM: If proposal is to deepen or plug back, give data on present productive zone and proposed new productive zone. If proposal is to drill or deepen directionally, give pertinent data on subsurface locations and measured and true vertical depths. Give blowout preventer program, if any.

24. SIGNED [Signature] TITLE Drilling Clerk DATE 9-2-80

(This space for Federal or State office use)

PERMIT NO. A

APPROVAL DATE

APPROVED BY

CONDITIONS OF APPROVAL, IF ANY

TITLE

DATE

DISTRICT ENGINEER

*See Instructions On Reverse Side

36-139-22557
5. LEASE DESIGNATION AND SERIAL NO.
Jic. Trib. Cont. #1236. IF INDIAN, ALLOTTEE OR TRIBE NAME
Jicarilla Apache

7. UNIT AGREEMENT NAME

8. FARM OR LEASE NAME

Jicarilla 123 C

9. WELL NO.

30

10. FIELD AND POOL, OR WILDCAT

Basin Dakota

11. SEC., T., R., M., OR BLE.

Sec. 5, T-25-N, R-4-W
NMPM

12. COUNTY OR PARISH

Rio Arriba

13. STATE

NM

OIL CONSERVATION DIVISION

STATE OF NEW MEXICO

P. O. BOX 2088

Form C-107
Revised 10-1-78

ENERGY AND MINERALS DEPARTMENT

SANTA FE, NEW MEXICO 87501

All distances must be from the outer boundaries of the Section.

| | | | | | |
|--------------------------------------------------------------------------------------------------------------------------------|--------------------------------------|-----------------------------|-----------------------------------------------------------------------------|-------------------------------------------|-----------------------|
| Operator EL PASO EXPLORATION COMPANY | | | Lease (JICARILLA APACHE TRIBAL JICARILLA 123 C CONTRACT #123) | | Well No. 30 |
| Unit Letter J | Section 5 | Township 25N | Range 4W | County Rio Arriba | |
| Actual Footage Location of Well: 1850 feet from the South line and 1815 feet from the East line | | | | | |
| Ground Level Elev. 7214 | Producing Formation DAKOTA | Pool BASIN DAKOTA | | Dedicated Acreage: 321.64 Acres | |

1. Outline the acreage dedicated to the subject well by colored pencil or hatchure marks on the plat below.
2. If more than one lease is dedicated to the well, outline each and identify the ownership thereof (both as to working interest and royalty).
3. If more than one lease of different ownership is dedicated to the well, have the interests of all owners been consolidated by communitization, unitization, force-pooling, etc?

☐ Yes ☐ No If answer is "yes," type of consolidation _____

If answer is "no," list the owners and tract descriptions which have actually been consolidated. (Use reverse side of this form if necessary.) _____

No allowable will be assigned to the well until all interests have been consolidated (by communitization, unitization, forced-pooling, or otherwise) or until a non-standard unit, eliminating such interests, has been approved by the Commission.

| | |
|-----------------------------------------------------------------------------------------------------------------------------------------------------------------------------------------------------------------------------------------------------------------|-----------------------------------------------------------------------------------------------------------------------------------------------------------------------------------------------------------------------------------------------------------------------------------------------------------------------------------------------------------------------------------------------------------------------------------------------------------------------------------------------------------------------------------------------------------------------------------------------------------------------------------------------------------------------------------------------------------------|
| <p>NOTE: THIS PLAT IS REISSUED TO SHOW CHANGE IN OPERATOR. 8-19-80</p> <p>Sec. 5</p> <p>1850'</p> <p>1815'</p> <p>JICARILLA APACHE TRIBAL CONTRACT No. 123</p> <p>RECEIVED SEP 2 1980 U. S. GEOLOGICAL SURVEY FARMINGTON, N. M.</p> | <p>CERTIFICATION</p> <p>I hereby certify that the information contained herein is true and complete to the best of my knowledge and belief.</p> <p>Name El Paso Exploration</p> <p>Position Drilling Clerk</p> <p>Company September 2, 1980</p> <p>Date</p> <p>I hereby certify that the well location shown on this plat was plotted from field notes of actual surveys made by me or under my supervision, and that the same is true and correct to the best of my knowledge and belief.</p> <p>Date Surveyed August 23, 1980</p> <p>Registered Professional Engineer and/or Land Surveyor Fred B. Kerr Jr.</p> <p>Certificate No. 2054</p> |
|-----------------------------------------------------------------------------------------------------------------------------------------------------------------------------------------------------------------------------------------------------------------|-----------------------------------------------------------------------------------------------------------------------------------------------------------------------------------------------------------------------------------------------------------------------------------------------------------------------------------------------------------------------------------------------------------------------------------------------------------------------------------------------------------------------------------------------------------------------------------------------------------------------------------------------------------------------------------------------------------------|

El Paso NATURAL GAS
COMPANY

El Paso Natural Gas Company
P.O. BOX 1000
FORT WORTH, TEXAS 76101
PHONE: 546-0000

Well Name Ticarilla 173 C# 30
Location SE 25-4
Formation DK

We, the undersigned, have inspected this location and road.

U. S. Forest Service
Richard L. Smith
Archaeologist

Date

Date

John P. White Hawk
Bureau of Indian Affairs Representative

Date 5-21-81

Bureau of Land Management Representative

Date

U. S. Geological Survey Representative - AGREES
TO THE FOOTAGE LOCATION OF THIS WELL.
REASON:

Date 5/21/81

Seed Mixture:

Equipment Color: Brown

Road and Row: (Same) or (Separate)

Remarks:

C.C. to Dave Vilvin
Earl Mealer
John Ahlm

EL PASO EXPLORATION COMPANY

Multi-Point Surface Use Plan
Jicarilla 123 C #30

1. Existing Road - Please refer to Map No. 1 which shows the existing roads. New roads which will be required have been marked on this map. All existing and new roads will be properly maintained during the duration of this project.
2. Planned Access Roads - Please refer to Map No. 1. The grade of the access roads will be consistent with that of the local terrain. The road surface will not exceed twenty feet (20') in width. Upon completion of the project, the access road will be adequately drained to control soil erosion. Drainage facilities may include ditches, water bars, culverts or any other measure deemed necessary by trained Company personnel to insure proper drainage. Gates and/or cattleguards will be installed if necessary.
3. Location of Existing Wells - Please refer to Map No. 2.
4. Location of Tank Batteries, Production Facilities, and Production Gathering and Service Lines - Please refer to Maps No. 1 and No. 2. Map No. 2 shows the existing gas gathering lines. Map No. 1 shows the existing roads and new proposed access roads. All known production facilities are shown on these two maps.
5. Location and Type of Water Supply - Water for the proposed project will be obtained from Bull Pasture Water Hole.
6. Source of Construction Materials - No additional materials will be required to build either the access road or the proposed location.
7. Methods of Handling Waste Materials - All garbage and trash materials will be put into a burn pit shown on the attached Location Plat No. 1. When clean-up operations are begun on the proposed project, the burn pit with its refuse will be buried to a depth of at least three feet (3'). A latrine, the location of which is also shown on Plat No. 1,

7. cont'd. will be provided for human waste. If large amounts of liquids are left in the reserve pit after completion of the project, the pit will be fenced until the liquids have had adequate time to dry. The location clean-up will not take place until such time as the reserve pit can be properly covered over to prevent run-off from carrying any of these materials into the watershed. No earthen pit will be located on natural drainages; all earthen pits will be so constructed as to prevent leakage from occurring.
8. Ancillary Facilities - No camps or airstrips will be associated with this project.
9. Wellsite Layout - Please refer to the attached Plat No. 1.
10. Plans for Restoration of the Surface - After completion of the proposed project, the location will be cleaned and leveled. The location will be left in such a condition that will enable reseeding operations to be carried out. Seed mixture as designated by the responsible government agency will be used. The reseeding operation will be performed during the time period set forth by the regulatory body. The location production equipment will be painted as designated by the responsible government agency.
11. Other Information - The terrain is rolling hills with pinon, sage and juniper growing. Deer are seen occasionally on the proposed project site.
12. Operator's Representative - W.D. Dawson, PO Box 990, Farmington, NM
13. Certification - I hereby certify that I, or persons under my direct supervision, have inspected the proposed drillsite and access route; that I am familiar with the conditions which presently exist; that the statements made in this plan are, to the best of my knowledge, true and correct; and that the work associated with the operations proposed herein will be performed by El Paso Natural Gas Company and its contractors and sub-contractors in conformity with this plan and the terms and conditions under which it is approved.



D. R. Read
Project Drilling Engineer

Operations Plan
Jicarilla 123 C #30

I. Location: 1850'S, 1815'E, Section 5, T-25-N, R-4-W, Rio Arriba Co., NM

Field: Basin Dakota

Elevation: 7214'GL

II. Geology:

| | | | | |
|--------------------|------------|----------|-------------|-------|
| A. Formation Tops: | Surface | San Jose | Menefee | 5395' |
| | Ojo Alamo | 3160' | Pt.Lookout | 5810' |
| | Kirtland | 3210' | Gallup | 6880' |
| | Fruitland | 3500' | Greenhorn | 7755' |
| | Pic.Cliffs | 3630' | Graneros | 7809' |
| | Lewis | 3730' | Dakota | 7865' |
| | Mesa Verde | 5315' | Total Depth | 8150' |

B. Logging Program: Induction Electric and Gamma Ray Density at TD.

C. Coring: none

III. Drilling:

A. Mud Program: mud from surface to Total Depth.

IV. Materials:

| | | | | |
|--------------------|------------------|--------------|-----------------|----------------------|
| A. Casing Program: | <u>Hole Size</u> | <u>Depth</u> | <u>Csg.Size</u> | <u>Wt.&Grade</u> |
| | 12 1/4" | 200' | 8 5/8" | 24.0# K-55 |
| | 7 7/8" | 6500' | 4 1/2" | 10.5# K-55 |
| | 7 7/8" | 8150' | 4 1/2" | 11.6# K-55 |

B. Float Equipment: 8 5/8" surface casing - cement guide shoe

4 1/2" production casing - guide shoe and self-fill insert valve.
Two multiple stage cementers equipped for three stage cementing.
Set tool for second stage at 6410'' and tool for third stage at 3830''. Run 20 centralizers spaced as follows: one on each of the bottom 8 joints, one below each stage tool, and five above each stage tool spaced every other joint.

C. Tubing: 8150'' of 2 3/8", 4.7#, J-55 tubing, common pump seating nipple and expendable check valve with drill type guide.

D. Wellhead Equipment: 8" 2000 x 8 5/8" casing head with 8" x 4 1/2" casing hanger, 8" 2000 x 6" 2000 xmas tree.

V. Cementing:

Surface casing (12 1/4" x 8 5/8") - use 140 sks. Class "B" cement with 1/4# gel-flake per sack and 3% calcium chloride (165 cu.ft. of slurry, 100% excess to circulate). WOC 12 hours. Test to 600#/30 min.

Operations Plan - Jicarilla 123 C #30

V. Cementing, cont'd.

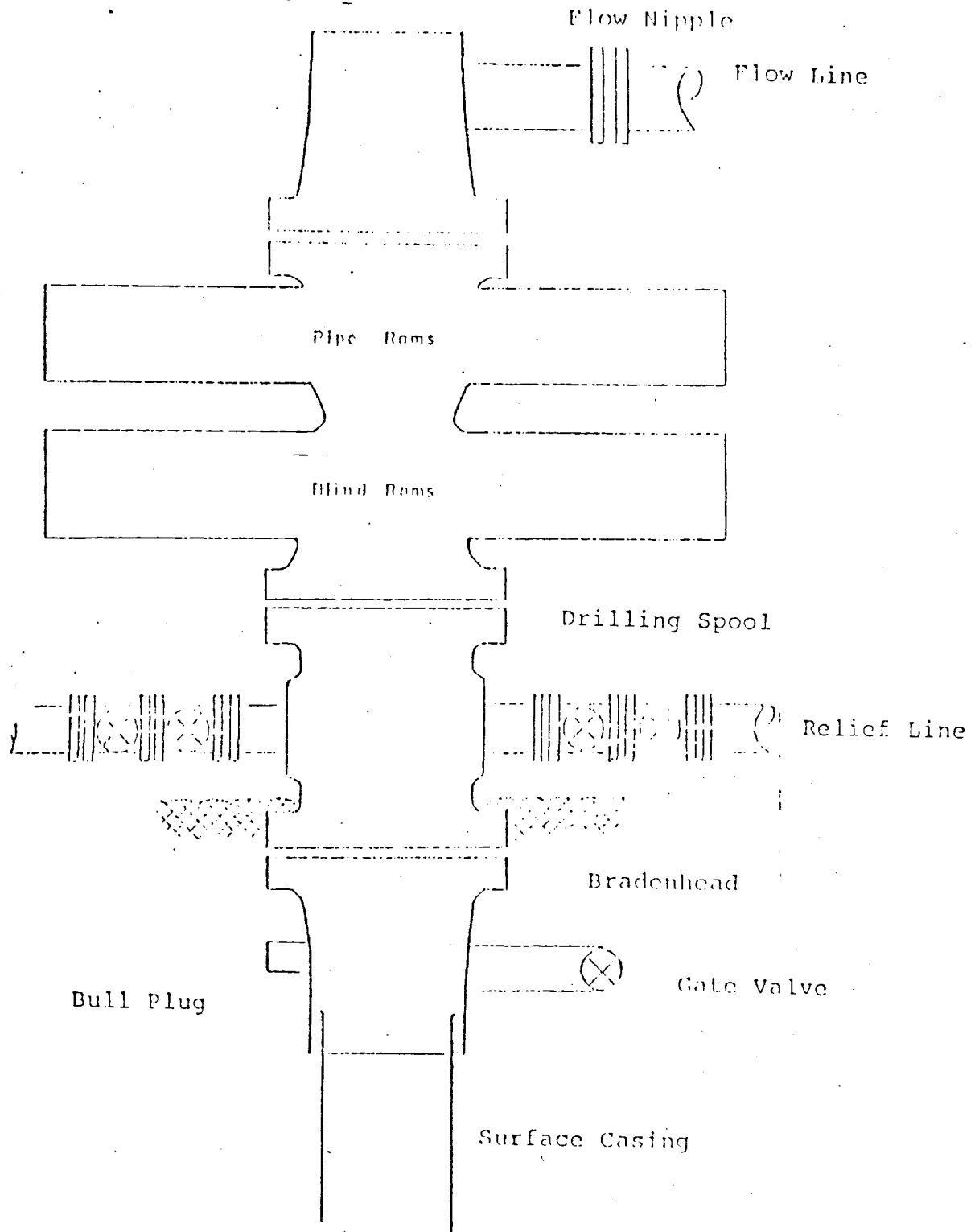
Production casing (7 7/8" x 4 1/2")

First stage - use 172 sks. of 65/35 Class "B" Pozmix with 6% gel and 2% calcium chloride mixed with 8.3 gallons water per sack followed by 100 sks. 50/50 Class "B" Pozmix with 2% gel, 2% calcium chloride and 1/4# fine tuf-plug per cu.ft. (405 cu.ft. of slurry, 40% excess to cover the Gallup).

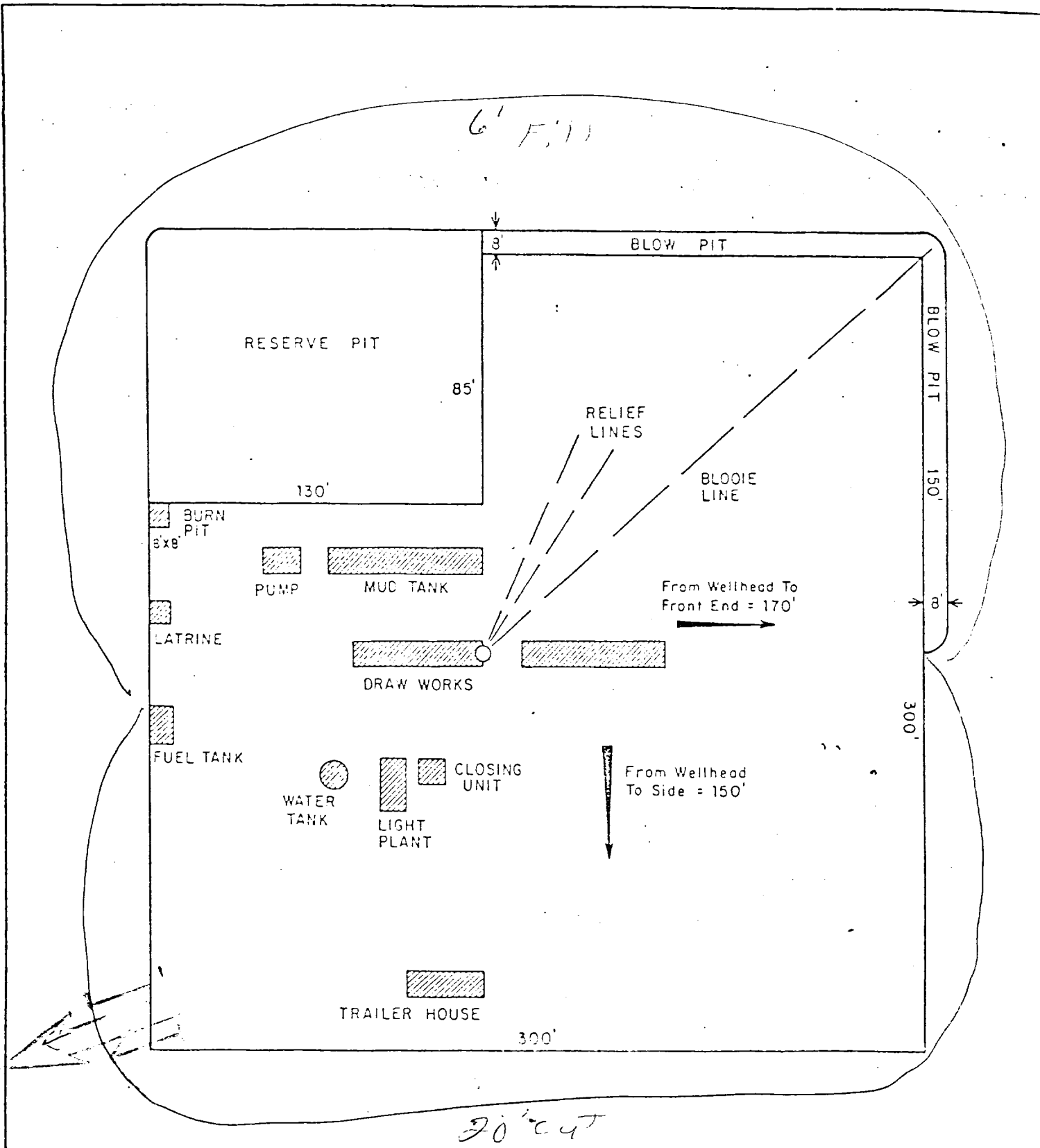
Second stage - circulate mud for 2.5 hours, then cement with 262 sks. of 65/35 Class "B" Pozmix with 6% gel and 2% calcium chloride and 8.3 gallons water per sack (424 cu.ft. of slurry, 70% excess to cover the Mesa Verde).

Third stage - circulate mud for 2.5 hours, then cement using 188 sks. Class "B" Pozmix with 6% gel and 2% calcium chloride mixed with 8.3 gallons water per sack (305 cu.ft. of slurry, 100% excess to fill to base of Ojo Alamo). Run temperature survey on top stage only at 8 hours. WOC 18 hours.


Typical B.O.P. Installation for Dakota Well



Series 900 Double Gate BOP, rated
at 3000 psi Working Pressure
When gas drilling operations begin a Shaffer type
50 or equivalent rotating head is installed on top of
the flow nipple and the flow line is converted into
a blowie line.

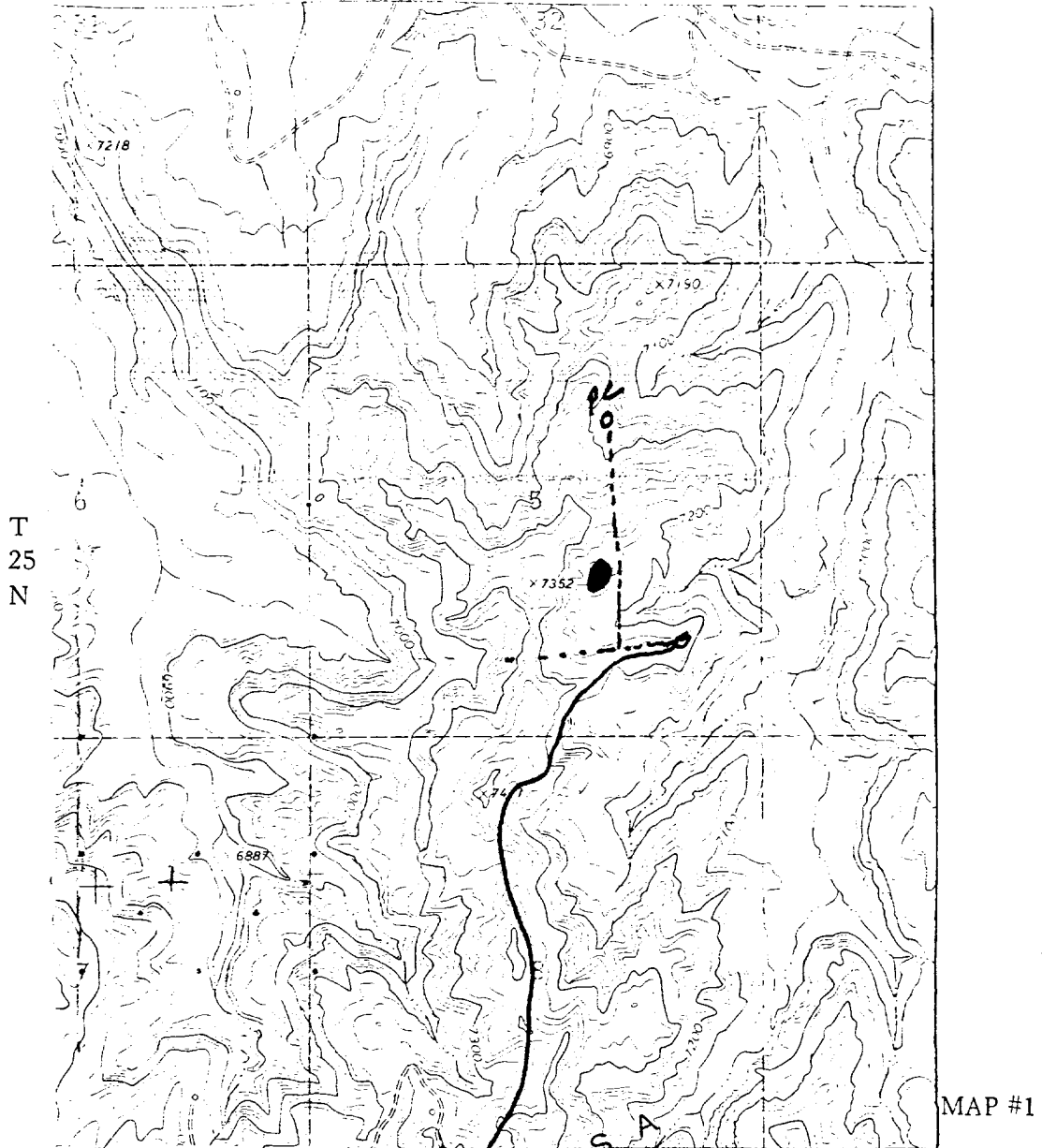


| | |
|------------|----------------|
| ENG. REC. | DATE |
| DRAWN | J.L.H. 8-16-78 |
| CHECKED | |
| CHECKED | |
| PROJ. APP. | |

 El Paso Natural Gas Company
 TYPICAL LOCATION PLAT FOR
 MESAVERDE OR DAKOTA DRILL SITE

EL PASO EXPLORATION COMPANY
 Jicarilla 123C #30
 SE 5-25-4

R-4-W



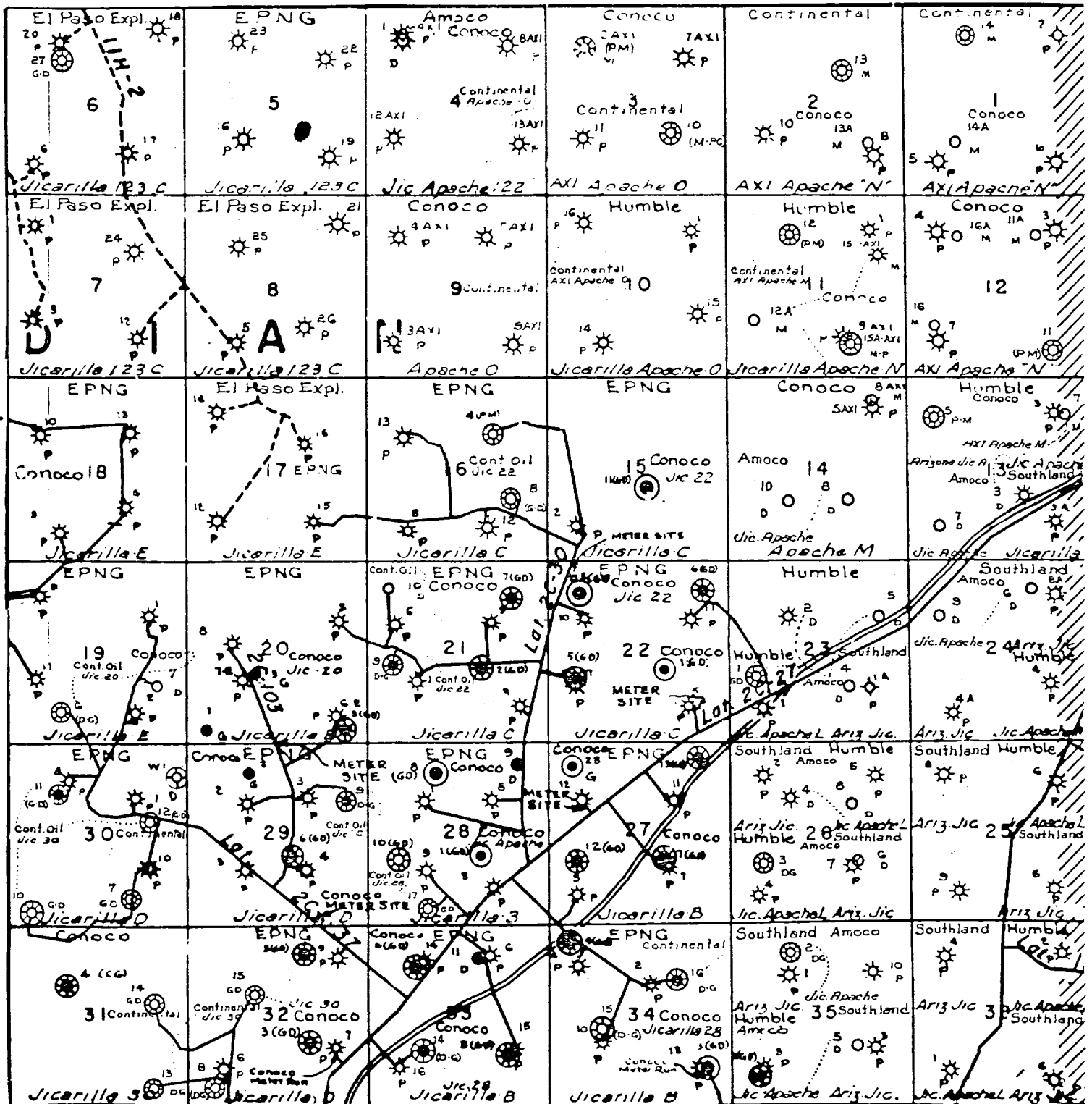
LEGEND OF RIGHT-OF-WAYS

- EXISTING ROADS
- EXISTING PIPELINES
- EXISTING ROAD & PIPELINE
- PROPOSED ROADS
- PROPOSED PIPELINES
- PROPOSED ROAD & PIPELINE

EL PASO EXPLORATION COMPANY

Jicarilla 123C #30

SE 5-25-4



MAP #2

R-4-W

● Proposed Location