

UNITED STATES
DEPARTMENT OF THE INTERIOR
BUREAU OF LAND MANAGEMENT

SUNDRY NOTICES AND REPORTS ON WELLS

Do not use this form for proposals to drill or to deepen
or reentry to a different reservoir.

Use "APPLICATION FOR PERMIT" For such proposals

FORM APPROVED

Budget Bureau No.1004-035

Lease Designation and Ser. No

Jicarilla 127

6. If Indian, Allottee or Tribe Name

Jicarilla Apache Tribe

7. If Unit or CA, Agreement Designation

SUBMIT IN TRIPLICATE

1. Type of Well:

XX Oil Well Gas Well Other

8. Well Name and No.

Apache ~~127~~ # 134

2. Name of Operator

Apache Corporation

9. API Well No.

30 03922658

3. Address and Telephone No.

2855 Southside River Road Suite A, Farmington, NM 87401 505-325-0318

10. Field and Pool, or Exploratory Area

Lindrith Gal/Dak

4. Location of Well (Footage, Sec., T., R., M., or Survey Description)

NE/SW Sec 10 T24N R4W

11. County or Parish, State

Rio Arriba, NM

12. CHECK APPROPRIATE BOX(s) TO INDICATE NATURE OF NOTICE, REPORT, OR OTHER DATA

TYPE OF SUBMISSION	TYPE OF ACTION
Notice of Intent	XX Abandonment
XX Subsequent Report	Recompletion
Final Abandonment Notice	Plugging Back
	Casing Repair
	Altering Casing
	Other _____
	Change of Plans
	New Construction
	Non-Routine Fracturing
	Water Shut-Off
	Conversion to Injection
	Dispose Water

(Note: Report results of multiple completions on Well Completion or Recompletion Report and LogForm.)

13. Describe Proposed or Completed Operations (Clearly state all pertinent details, and give pertinent dates, including estimated date of starting any proposed work. If directionally drilled give subsurface locations and measured and true vertical depths for all markers and zones pertinent to this work.)

Apache Corp. has completed Plugging procedures on 12/01/2000 as follows : See attachments
Remediation will be completed in spring of 2001

14. I Certify that the foregoing is true and correct.

Signed Patricia M. Hester Title

Sr. Pumper

Date 12/22/00

(This space for Federal or State office use)

Approved by /s/ Patricia M. Hester Title

Lands and Mineral Resources

Date

JAN 12 2001

Conditions of approval, if any:

Title 18 U.S.C. Section 1001, makes it a crime for any person knowingly to make to any department or agency of the United States any false, fictitious or

Fraudulent statements or representations as to any matter within its jurisdiction.

WELL NAME APACHE 127 # 134
FORMATION DAKOTA
 API: 30 03922658
 NE/SW SEC 10 T24N R4W
 RIO ARRIBA, NM

DATE 12/12/2000

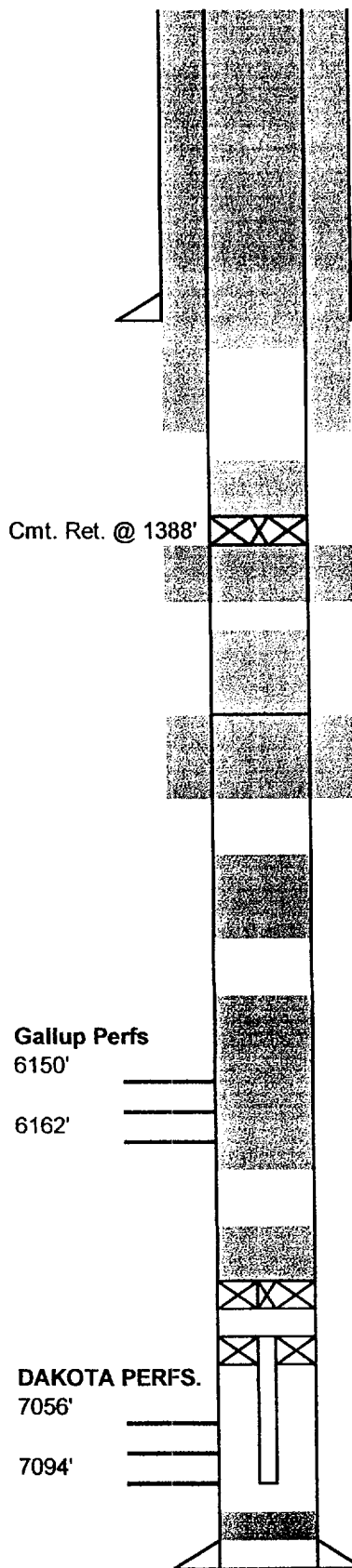
SURFACE CSG:
8 5/8" 24.0# K-55 @ 306'
Cement w/216 sx Class G

PROD. CSG.
4 1/2" 10.5# K-55 and 11.6# @ 7277'
DV Tool @ 4495'

Cement
 1st stage - 508 sx (yield 1.58 cu ft/sk) estimate top @ 4637' (75% efficiency)
 2nd stage - 414 sx (yield 1.58 cu ft/sk) estimate top @ 2342'

All cement : Class "B" neat

Perf Surface csg. @ 360' Pump 147 sx. (173.46 cuft) 15.5 ppg cmt. Down casing.
 Circulate cement to surface out Braidinghead
 Cut off wellhead- Fill voids- Install marker.
 Terrance Muniz Jicarilla Tribal Inspector on Location.



Perforate Nacimiento Form. @ 1450'
 44 sx (39 sx (46.02 cuft) behind & 5 sx(5.9 cuft) inside pipe) 15.6 ppg cmt
 Spot 12 sx (14.16 cuft) 15.6 ppg cmt on top of cmt ret.
 Top of cement @ 1230'
 Terrance Muniz Jicarilla Tribal Inspector on Location.

41 sx (47.61 cuft) 15.5 ppg cmt plug f/2865' to 2324'
 Tag cmt top @ 2681' Fell 357' Pressure test csg. 500 psi 5 min. Held
 Spot 29 sx (34.22 cuft) 15.6 ppg cmt plug f/2681' to 2299'
 To top off Pictured Cliff/ Ojo Alamo Plug.
 Pressure test Braidinghead. Would not hold.
 Terrance Muniz Jicarilla Tribal Inspector on Location.

14 sx (16.52 cuft) 15.6 ppg cmt plug f/4529' to 4344'
 Tag cmt top @ 4351'
 Pressure test csg. Would not hold.
 Terrance Muniz Jicarilla Tribal Inspector on Location.

20 sx (23.09 cuft) 15.4 ppg Balanced plug f/6229' to 5971'
 Tag cement top @ 6062'
 Pressure test csg. 500psi Bled down. Est rate- 1bpm @ 500 psi
 Change of proc. Approved by: Pat Hester BLM
 Terrance Muniz Jicarilla Tribal Inspector on Location.

12 sx. (14.16 cuft) 15.5 ppg cmt plug f/6989' to 6831'
 Had good circulation throughout job.
 Wireline set Bridge plug @ 6989'
 Change of proc. Approved by: Pat Hester BLM
 Tbg Anchor stuck. Jet cut tbg. @ 7003'

Formation Tops

Nacimiento (Per. BLM)	1400'
Ojo Alamo	2451'
Kirtland	2553'
Pictured Cliffs	2808'
Mesa Verde	4458'
Gallup	6150'
Dakota	7050'