

UNITED STATES
DEPARTMENT OF THE INTERIOR
GEOLOGICAL SURVEY

APPLICATION FOR PERMIT TO DRILL, DEEPEN, OR PLUG BACK

1. TYPE OF WORK

DRILL ☒DEEPEN ☐PLUG BACK ☐

2. TYPE OF WELL

OIL
WELL ☒GAS
WELL ☒OTHER ☐SINGLE
ZONE ☐MULTIPLE
ZONE ☒

3. NAME OF OPERATOR

Getty Oil Company

4. ADDRESS OF OPERATOR

P. O. Box 3360, Casper, Wyoming 82602

5. LOCATION OF WELL (Report location clearly and in accordance with any State requirements.)

790' FSL 1850' FWL
At proposed prod. zone Same

6. DISTANCE IN MILES AND DIRECTION FROM NEAREST TOWN OR POST OFFICE*

117 miles southeasterly from Aztec

7. DISTANCE FROM PROPOSED*

LOCATION TO NEAREST
PROPERTY OR LEASE LINE, FT.
(Also to nearest drlg. unit line, if any)8. DISTANCE FROM PROPOSED LOCATION*
TO NEAREST WELL, DRILLING, COMPLETED,
OR APPLIED FOR, ON THIS LEASE, FT.

9. ELEVATIONS (Show whether DF, RT, GR, etc.)

6647 GR

10.

PROPOSED CASING AND CEMENTING PROGRAM

SIZE OF HOLE	SIZE OF CASING	WEIGHT PER FOOT	SETTING DEPTH	QUANTITY OF CEMENT
12-1/4	8-5/8	New 24#	350	200 sx
7-7/8	5-1/2	New 14#	5200	1150 sx *
7-7/8	5-1/2	New 15.5#	7000	

* Cement volume will depend on hole size and caliper, calculate from logs.

Ten (10) Point Resource Protection Plan attached.



11. ABOVE SPACE DESCRIBE PROPOSED PROGRAM: If proposal is to deepen or plug back, give data on present productive zone and proposed new productive zone. If proposal is to drill or deepen directionally, give pertinent data on subsurface locations and measured and true vertical depths. Give blowout prevention program, if any.

12.

SIGNED

TITLE Area Supt.

DATE January 14, 1981

(This space for Federal or State office use)

PERMIT NO.

APPROVAL DATE

APPROVED BY

TITLE

DATE

CONDITIONS OF APPROVAL

FEB 18 1981

For
B. F. SIMS
DIST. OF ENGINEER

*See Instructions On Reverse Side

OIL CONSERVATION DIVISION

STATE OF NEW MEXICO
OIL AND MINERALS DEPARTMENTP. O. BOX 2088
SANTA FE, NEW MEXICO 87501Form C-107
Revised 10-1-78

All distances must be from the outer boundaries of the Section.

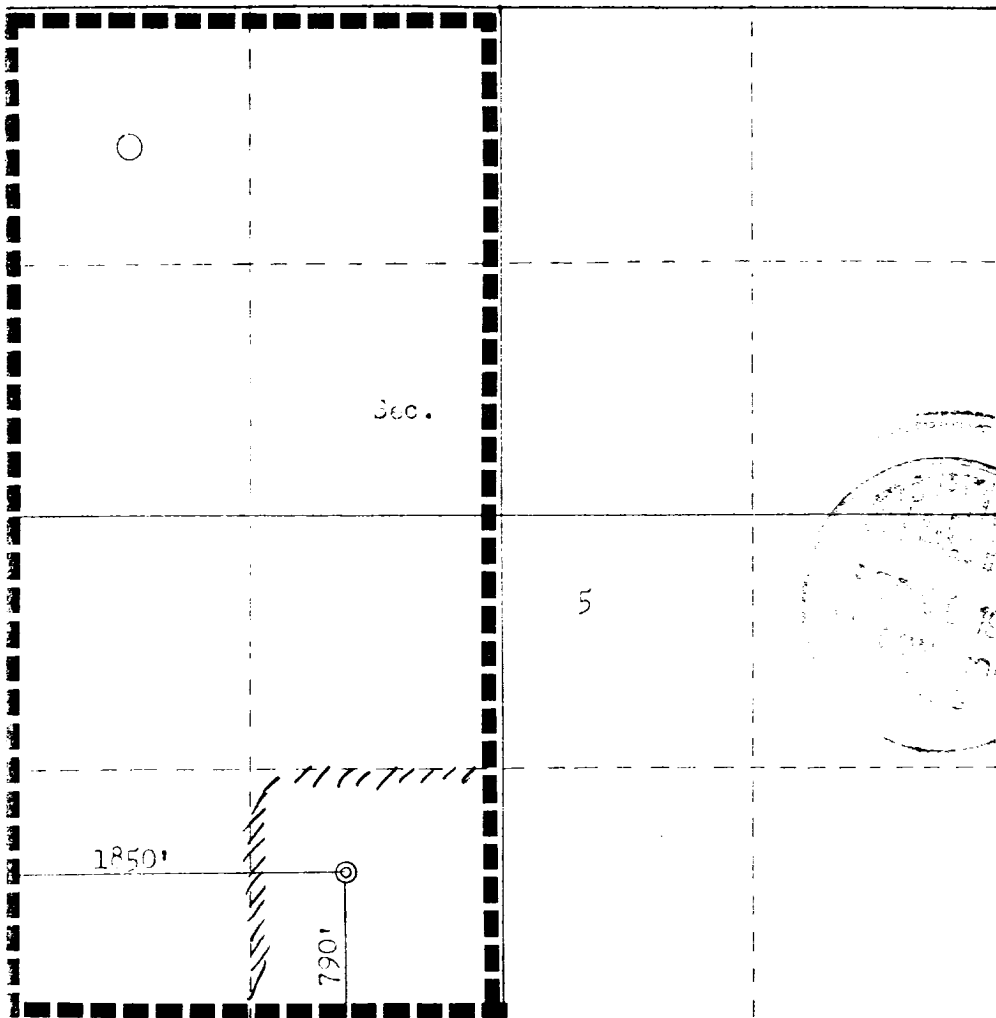
Operator GETTY OIL COMPANY			Lessee JICARILIA W A B		Well No. 33
Section N	Section 5	Township 24N	Range 5W	County Rio Arriba	
Actual Footage Location of Well:					
790 feet from the South line and		1850 feet from the West line			
Ground Level Elev. 6647	Producing Formation Dakota <i>& Gallup</i>	Pool Ozero Gallup Basin Dakota	Dedicated Acreage: 40/344.66 Acres		

1. Outline the acreage dedicated to the subject well by colored pencil or hatchure marks on the plat below.
2. If more than one lease is dedicated to the well, outline each and identify the ownership thereof (both as to working interest and royalty).
3. If more than one lease of different ownership is dedicated to the well, have the interests of all owners been consolidated by communitization, unitization, force-pooling, etc?

☐ Yes ☐ No If answer is "yes," type of consolidation _____

If answer is "no," list the owners and tract descriptions which have actually been consolidated. (Use reverse side of this form if necessary.) _____

No allowable will be assigned to the well until all interests have been consolidated (by communitization, unitization, forced-pooling, or otherwise) or until a non-standard unit, eliminating such interests, has been approved by the Commission.



CERTIFICATION

I hereby certify that the information contained herein is true and complete to the best of my knowledge and belief.

Name

Position

Agent

Company

Getty Oil Company

Date

1/26/81

I hereby certify that the well location shown on this plat was plotted from field notes of actual surveys made by me or under my supervision, and that the same is true and correct to the best of my knowledge and belief.

Date Surveyed

January 13, 1981

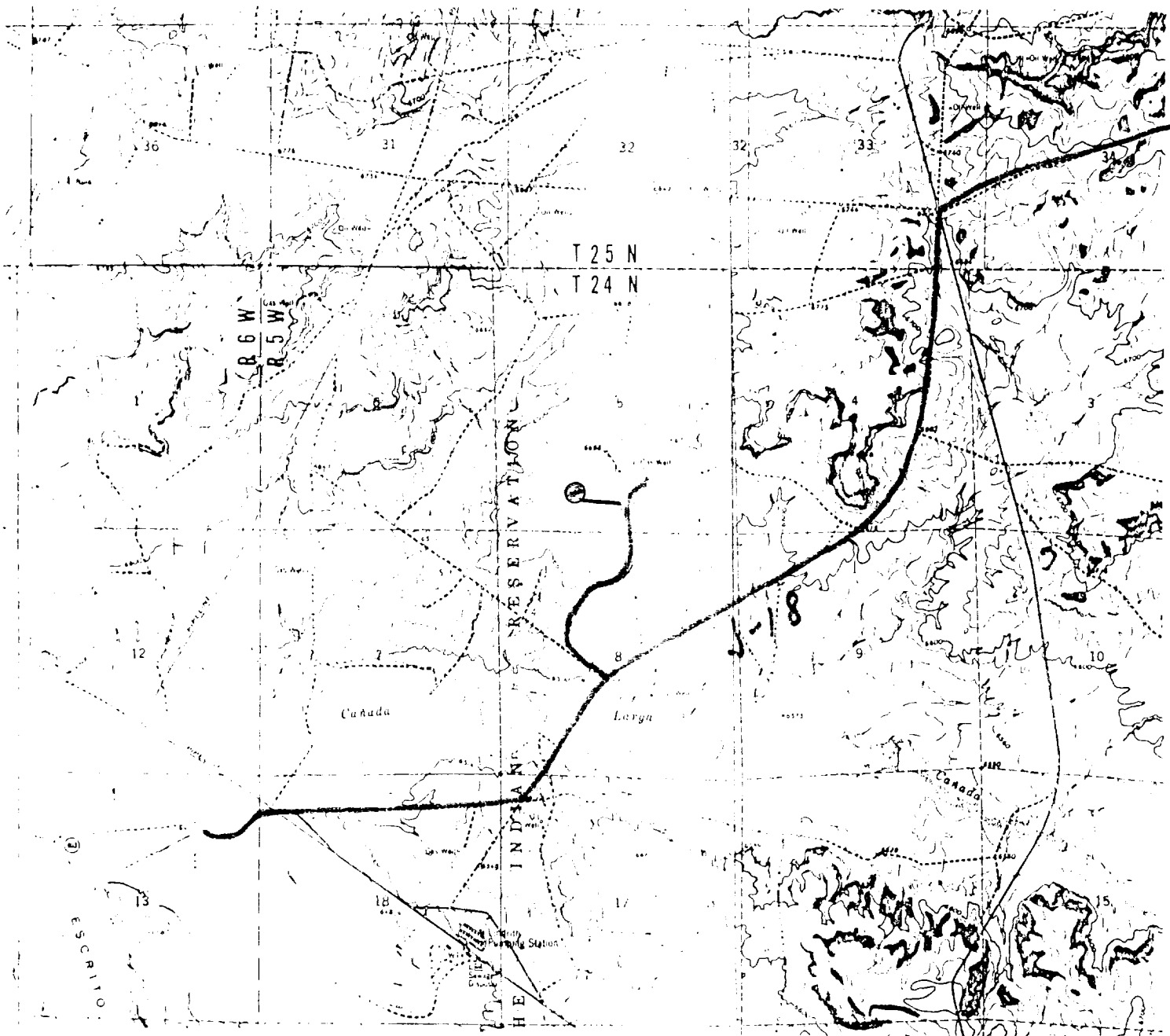
Registered Professional Engineer
and Land Surveyor

Fred B. Kerr Jr.
Fred B. Kerr Jr.

Certificate No.

3950

Scale: 1"=1000'



Vicinity Map for:
 Getty Oil Company #3E Jicarilla B
 790'FSL, 1850'FWL Sec. 5, T24N, R5W
 Rio Arriba County, New Mexico