

UNITED STATES
DEPARTMENT OF THE INTERIOR
GEOLOGICAL SURVEY

30-039-22673

5. LEASE DESIGNATION AND SERIAL NO.

Jicarilla Lease Contract #69

6. IF INDIAN, ALLOTTEE OR TRIBE NAME

7. UNIT AGREEMENT NAME

8. FARM OR LEASE NAME

Apache Federal

9. WELL NO.

13E

10. FIELD AND POOL, OR WILDCAT

Basin Dakota

11. SEC., T., R., M., OR BLK.
AND SURVEY OR AREA

Sec. 7, T24N, R5W

12. COUNTY OR PARISH

Rio Arriba

13. STATE

NM

APPLICATION FOR PERMIT TO DRILL, DEEPEN, OR PLUG BACK

1a. TYPE OF WORK

DRILL ☒DEEPEN ☐PLUG BACK ☐

b. TYPE OF WELL

OIL
WELL ☐GAS
WELL ☒

OTHER

SINGLE
ZONE ☐MULTIPLE
ZONE ☐

2. NAME OF OPERATOR

GULF OIL CORPORATION

3. ADDRESS OF OPERATOR

P. O. Box 670, Hobbs, NM 88240

4. LOCATION OF WELL (Report location clearly and in accordance with any State requirements.)*

At surface

1650' FSL & 1650' FWL

At proposed prod. zone

14. DISTANCE IN MILES AND DIRECTION FROM NEAREST TOWN OR POST OFFICE*

Approximately 8 miles north of Counselors

15. DISTANCE FROM PROPOSED*

LOCATION TO NEAREST
PROPERTY OR LEASE LINE, FT.
(Also to nearest drlg. unit line, if any)

16. NO. OF ACRES IN LEASE

2560

17. NO. OF ACRES ASSIGNED
TO THIS WELL

320 5/321.64

18. DISTANCE FROM PROPOSED LOCATION*

TO NEAREST WELL, DRILLING, COMPLETED,
OR APPLIED FOR, ON THIS LEASE, FT.

19. PROPOSED DEPTH

6775'

20. ROTARY OR CABLE TOOLS

Rotary

21. ELEVATIONS (Show whether DF, RT, GR, etc.)

6469 ft.

22. APPROX. DATE WORK WILL START*

March 15, 1981

23.

PROPOSED CASING AND CEMENTING PROGRAM

SIZE OF HOLE	SIZE OF CASING	WEIGHT PER FOOT	SETTING DEPTH	QUANTITY OF CEMENT
12 1/4	8-5/8"	24#	500'	400 sx - Circulated
7-7/8"	5-1/2"	15.50#	6775'	To be determined by caliper log

NOTE: See attached BOP Drawing #2

Circulating Media: 0' - 500'
500' - 4000'
4000' - 6775'

Fresh water spud mud

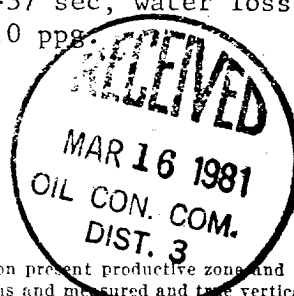
Fresh water

Fresh water gel with the following properties:

Viscosity 32-37 sec, water loss 20-4 cc,

weight 8.5-9.0 ppg.

Gas is Dedicated



IN ABOVE SPACE DESCRIBE PROPOSED PROGRAM: If proposal is to deepen or plug back, give data on present productive zone and proposed new productive zone. If proposal is to drill or deepen directionally, give pertinent data on subsurface locations and measured and true vertical depths. Give blowout preventer program, if any.

24.

SIGNED

TITLE

Area Production Manager

DATE

2-13-81

(This space for Federal or State office use)

PERMIT NO.

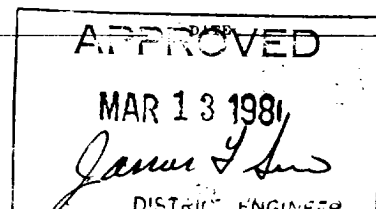
APPROVAL DATE

APPROVED BY

TITLE

CONDITIONS OF APPROVAL, IF ANY:

*See Instructions On Reverse Side



WELL LOCATION AND ACREAGE DEDICATION PLAT

Superseded C-128
Effective 1-1-85

All distances must be from the outer boundaries of the Section.

GULF OIL CORPORATION			Lease APACHE FEDERAL		Well No. #13 E
Unit Letter K	Section 7	Township 24 NORTH	Range 5 WEST	County RIO ARriba	
Actual Footage Location of Well: 1650 feet from the SOUTH line and 1650 feet from the WEST line					
Ground Level Elev. 6469	Producing Formation BASIN DAKOTA		Pool BASIN DAKOTA		Dedicated Acreage 321.64 - 320 Acres

1. Outline the acreage dedicated to the subject well by colored pencil or hatchure marks on the plat below.
2. If more than one lease is dedicated to the well, outline each and identify the ownership thereof (both as to working interest and royalty).
3. If more than one lease of different ownership is dedicated to the well, have the interests of all owners been consolidated by communization, unitization, force-pooling, etc?

☐ Yes ☐ No If answer is "yes," type of consolidation _____

If answer is "no," list the owners and tract descriptions which have actually been consolidated. (Use reverse side of this form if necessary.) _____

No allowable will be assigned to the well until all interests have been consolidated (by communization, unitization, forced-pooling, or otherwise) or until a non-standard unit, eliminating such interests, has been approved by the Commission.

CERTIFICATION

I hereby certify that the information contained herein is true and complete to the best of my knowledge and belief.

Glyn Stone

Name

GLYN STONE

Position

AREA GAS ENGINEER

Company

GULF OIL CORPORATION

Date

FEBRUARY 26, 1981.

RECEIVED
MAR 16 1981
OIL CON. COM.
DIST. 3

I hereby certify that the well location shown on this plat is based on field notes and surveys made by me or under my supervision and that the same is true and correct to the best of my knowledge.



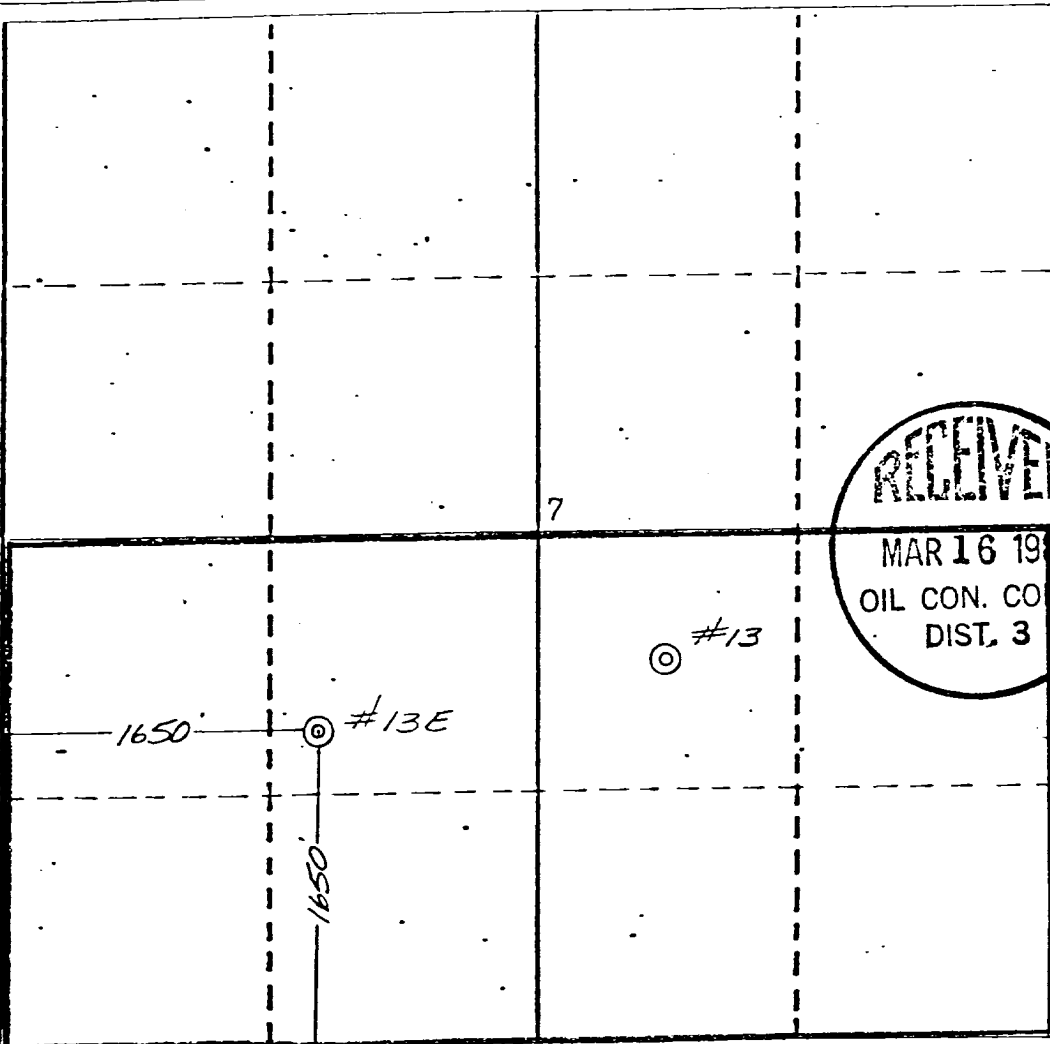
Date Surveyed

February 18, 1981

Registered Professional Engineer
and/or Land Surveyor

Michael Daly

Certificate No.



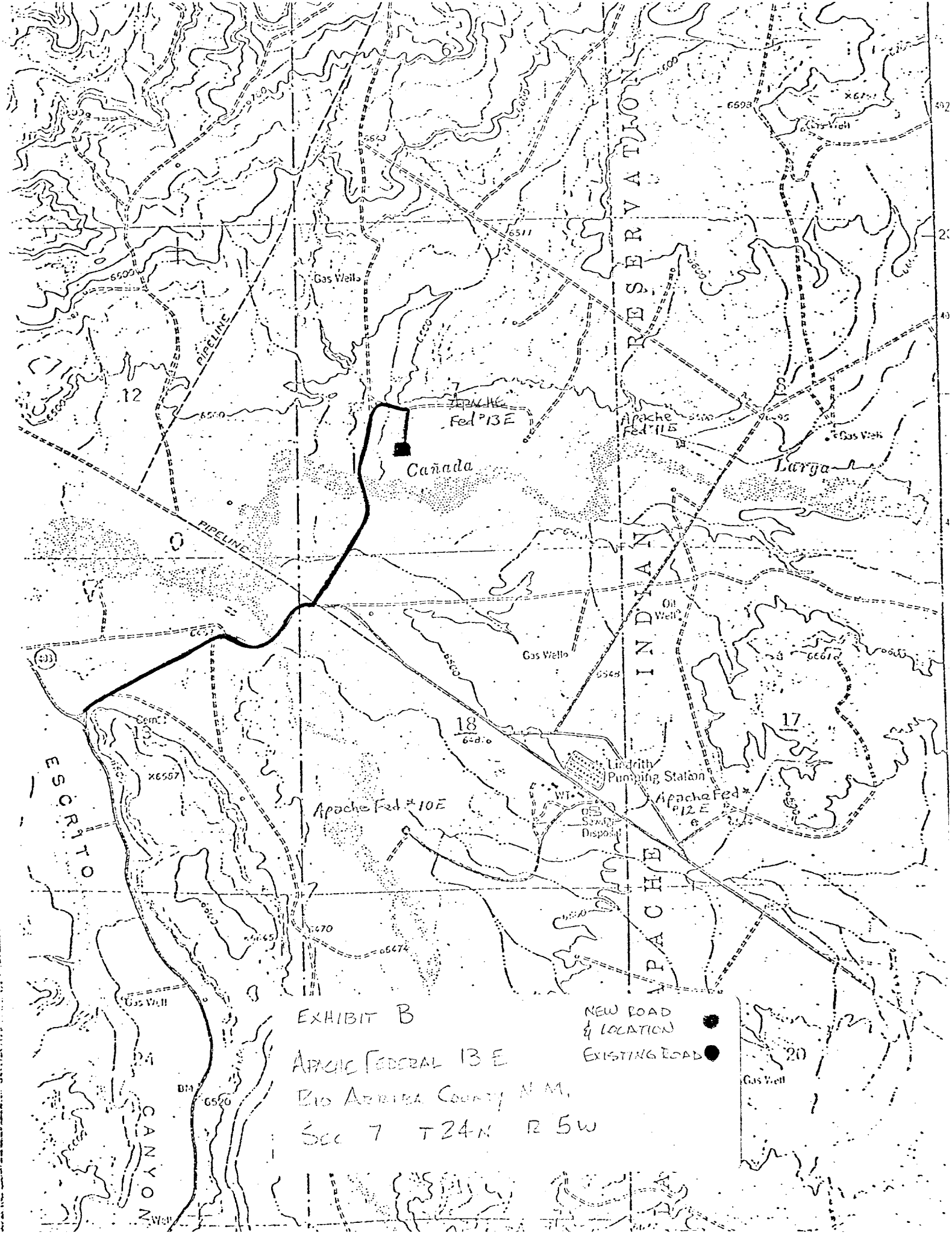


EXHIBIT B
APACHE FEDERAL 13 E
BIG BEEBEE COUNTY, N.M.
SEC 7 T24N R5W

NEW ROAD
LOCATION
EXISTING ROAD