

UNITED STATES
DEPARTMENT OF THE INTERIOR
GEOLOGICAL SURVEY

30-039-22673

APPLICATION FOR PERMIT TO DRILL, DEEPEN, OR PLUG BACK

1a. TYPE OF WORK

DRILL ☒DEEPEN ☐PLUG BACK ☐

b. TYPE OF WELL

OIL
WELL ☐GAS
WELL ☒

OTHER

SINGLE
ZONE ☐MULTIPLE
ZONE ☐

2. NAME OF OPERATOR

Culf Oil Corporation

3. ADDRESS OF OPERATOR

P. O. Box 670, Hobbs, NM 88240

4. LOCATION OF WELL (Report location clearly and in accordance with any State requirements.)

At surface

1950' FSL & 990' FWL

1850' 790'

At proposed prod. zone

14. DISTANCE IN MILES AND DIRECTION FROM NEAREST TOWN OR POST OFFICE*

Approximately 8 miles north of Counselors

15. DISTANCE FROM PROPOSED*

LOCATION TO NEAREST

PROPERTY OR LEASE LINE, FT.

(Also to nearest drlg. unit line, if any)

18. DISTANCE FROM PROPOSED LOCATION*

TO NEAREST WELL, DRILLING, COMPLETED,
OR APPLIED FOR, ON THIS LEASE, FT.

19. PROPOSED DEPTH

2560
6800'17. NO. OF ACRES ASSIGNED
TO THIS WELL

5/320

21. ELEVATIONS (Show whether DF, RT, GR, etc.)

6484 sl

22. APPROX. DATE WORK WILL START*

March 15, 1981

23.

PROPOSED CASING AND CEMENTING PROGRAM

SIZE OF HOLE	SIZE OF CASING	WEIGHT PER FOOT	SETTING DEPTH	QUANTITY OF CEMENT
12 1/4"	8-5/8"	24#	500'	400 sx - circulated
7-7/8"	5-1/2"	15.50#	6800'	To be determined by caliper log

NOTE: See attached BOP Drawing #2

Circulating Media:

0' - 500' Fresh water spud mud
500' - 4000' Fresh water
4000' - 6800' Fresh water gel with the following properties:
Viscosity 32-37 sec, water loss 20-4 cc,
weight 8.5-9.0 ppg.

Gas is Dedicated

IN ABOVE SPACE DESCRIBE PROPOSED PROGRAM: If proposal is to deepen or plug back, give data on present productive zone and proposed new productive zone. If proposal is to drill or deepen directionally, give pertinent data on subsurface locations and measured and true vertical depths. Give blowout preventer program, if any.

24.

SIGNED

TITLE Area Production Manager

DATE

2-13-81

(This space for Federal or State office use)

PERMIT NO.

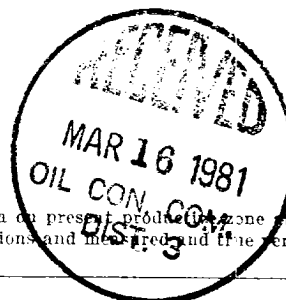
APPROVAL DATE

APPROVED BY

TITLE

CONDITIONS OF APPROVAL, IF ANY

*See Instructions On Reverse Side



APPROVED

MAR 13 1981

DISTRICT ENGINEER

NEW MEXICO OIL CONSERVATION COMMISSION
WELL LOCATION AND ACREAGE DEDICATION PLAT

Form C-102
Supersedes C-128
Effective 1-1-85

All distances must be from the outer boundaries of the Section.

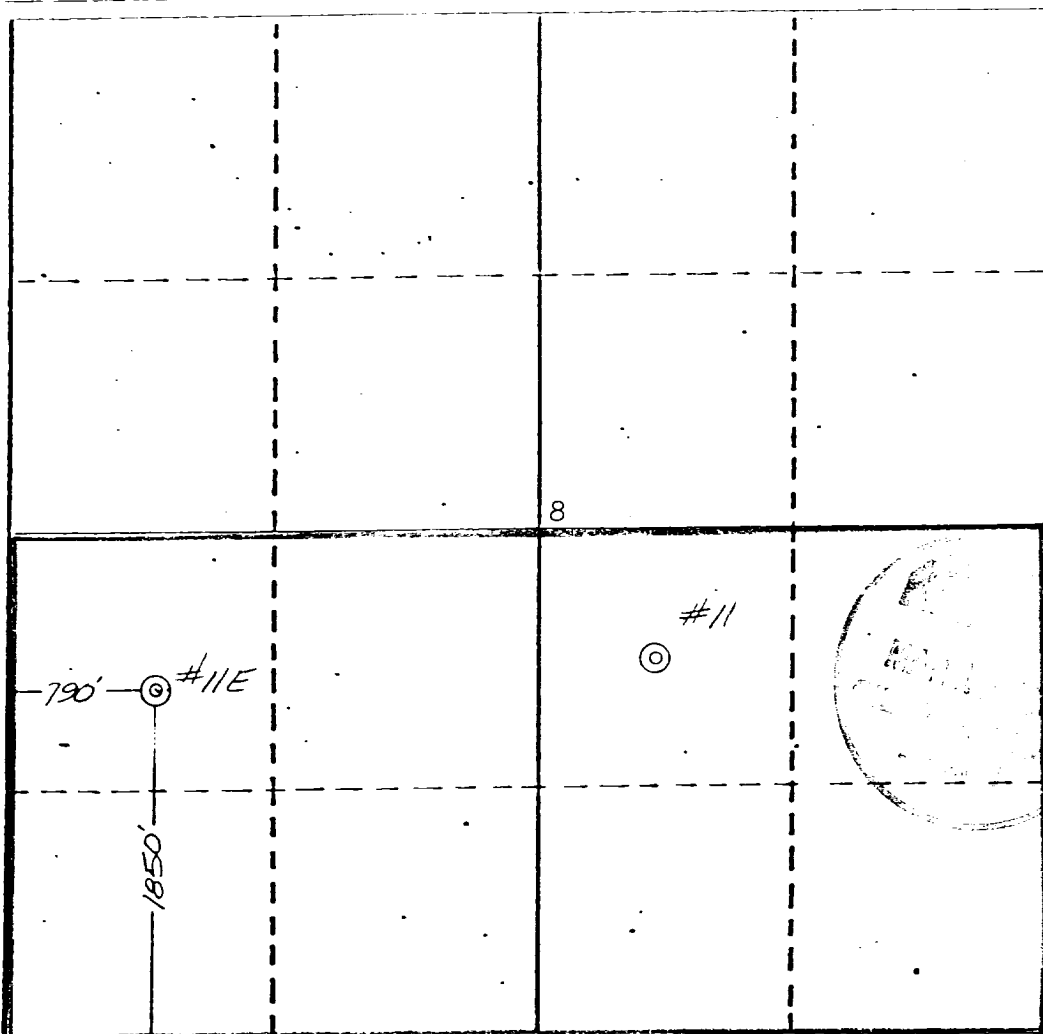
O, owner GULF OIL CORPORATION			Lease APACHE FEDERAL		Well No. #11 E
Unit Letter L.	Section 8	Township 24 NORTH	Range 5 WEST	County RIO ARriba	
Actual Footage Location of Well: 1850 feet from the SOUTH line and 790 feet from the WEST line					
Ground Level Elev. 6484	Producing Formation BASIN DAKOTA		Pool BASIN DAKOTA	Dedicated Acreage 320 Acres	

1. Outline the acreage dedicated to the subject well by colored pencil or hatchure marks on the plat below.
2. If more than one lease is dedicated to the well, outline each and identify the ownership thereof (both as to working interest and royalty).
3. If more than one lease of different ownership is dedicated to the well, have the interests of all owners been consolidated by communitization, unitization, force-pooling, etc?

☐ Yes ☐ No If answer is "yes," type of consolidation _____

If answer is "no," list the owners and tract descriptions which have actually been consolidated. (Use reverse side of this form if necessary.) _____

No allowable will be assigned to the well until all interests have been consolidated (by communitization, unitization, forced-pooling, or otherwise) or until a non-standard unit, eliminating such interests, has been approved by the Commission.



CERTIFICATION

I hereby certify that the information contained herein is true and complete to the best of my knowledge and belief.

Glyn Stone

Name

GLYN STONE

Position

AREA GAS ENGINEER

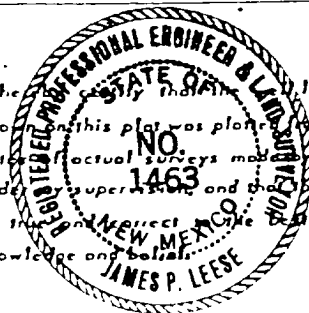
Company

GULF OIL CORPORATION

Date

FEBRUARY 26, 1981.

I hereby certify that the location shown on this plat was planned from field notes of actual surveys made by me or under my supervision, and that the same is true and correct to the best of my knowledge and belief.



Date Surveyed

February 18, 1981

Registered Professional Engineer and/or Land Surveyor

James P. Leese

Certificate No.

1463

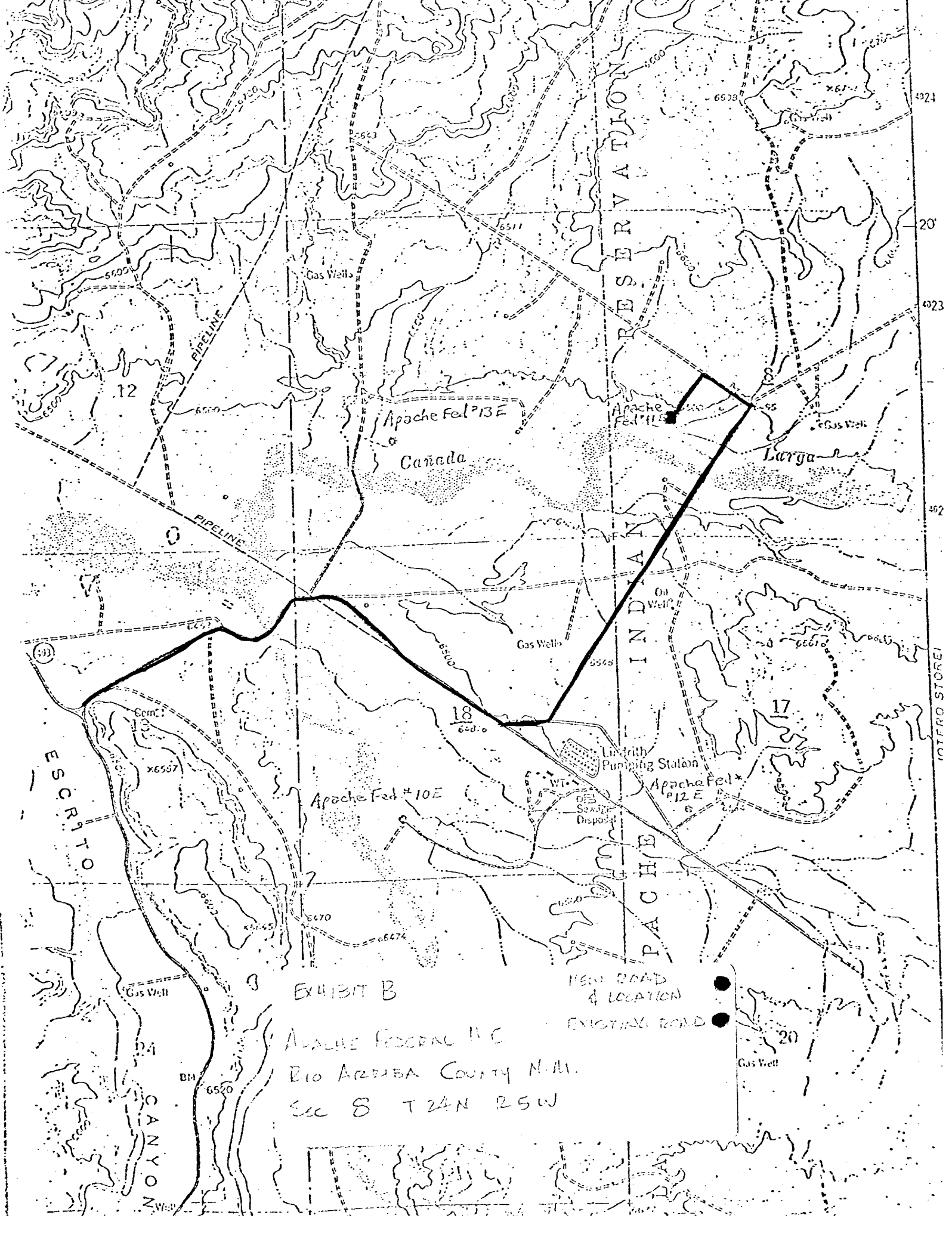


EXHIBIT B

APACHE FEDERAL INC.
RIO ARriba COUNTY N.M.
SEC 8 T24N R5W

NEW ROAD
& LOCATION
EXISTING ROAD

