

UNITED STATES
DEPARTMENT OF THE INTERIOR
GEOLOGICAL SURVEY

APPLICATION FOR PERMIT TO DRILL, DEEPEN, OR PLUG BACK

1a. TYPE OF WORK

DRILL ☒DEEPEN ☐PLUG BACK ☐

b. TYPE OF WELL

OIL
WELL ☐GAS
WELL ☒OTHER ☐SINGLE
ZONE ☐MULTIPLE
ZONE ☐

2. NAME OF OPERATOR

Gulf Oil Corporation

3. ADDRESS OF OPERATOR

P. O. Box 670, Hobbs, NM 88240

4. LOCATION OF WELL (Report location clearly and in accordance with any State requirements.)*

At surface

990' FSL & 990' FWL

At proposed prod. zone

14. DISTANCE IN MILES AND DIRECTION FROM NEAREST TOWN OR POST OFFICE*

Approximately 8 miles North of Counselors

15. DISTANCE FROM PROPOSED*

LOCATION TO NEAREST

PROPERTY OR LEASE LINE, FT.

(Also to nearest drlg. unit line, if any)

18. DISTANCE FROM PROPOSED LOCATION*

TO NEAREST WELL, DRILLING, COMPLETED,
OR APPLIED FOR, ON THIS LEASE, FT.

16. NO. OF ACRES IN LEASE

2560

19. PROPOSED DEPTH

6775'

17. NO. OF ACRES ASSIGNED
TO THIS WELL

5/ 320

20. ROTARY OR CABLE TOOLS

Rotary

21. ELEVATIONS (Show whether DF, RT, GR, etc.)

6521 8'

DEVELOP

22. APPROX. DATE WORK WILL START*

March 15, 1981

23. PROPOSED CASING AND CEMENTING PROGRAM

SIZE OF HOLE	SIZE OF CASING	WEIGHT PER FOOT	SETTING DEPTH	QUANTITY OF CEMENT
12 1/2"	8-5/8"	24#	500'	400 sx - Circulated
7-7/8"	5-1/2"	15.50#	6775'	To be determined by caliper log

NOTE: See attached BOP Drawing #2

Circulating Media: 0' - 500'
500' - 4000'
4000' - 6775'

Fresh water spud mud

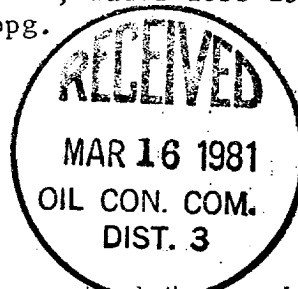
Fresh water

Fresh water gel with the following properties:

Viscosity 32-37 sec, water loss 20-4 cc,

weight 8.5-9.0 ppg.

Gas is Dedicated



IN ABOVE SPACE DESCRIBE PROPOSED PROGRAM: If proposal is to deepen or plug back, give data on present productive zone and proposed new productive zone. If proposal is to drill or deepen directionally, give pertinent data on subsurface locations and measured and true vertical depths. Give blowout preventer program, if any.

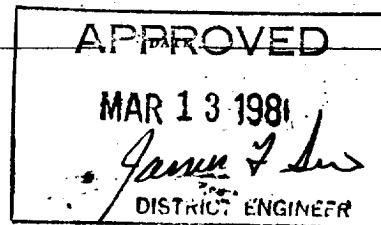
24. SIGNED R.C. Anderson TITLE Area Production Manager DATE 2-13-81

(This space for Federal or State office use)

PERMIT NO. _____ APPROVAL DATE _____

APPROVED BY _____ TITLE _____
CONDITIONS OF APPROVAL, IF ANY: _____

*See Instructions On Reverse Side



WELL LOCATION AND ACREAGE DEDICATION PLAT

Superceded C-128
Effective 1-1-83

All distances must be from the outer boundaries of the Section.

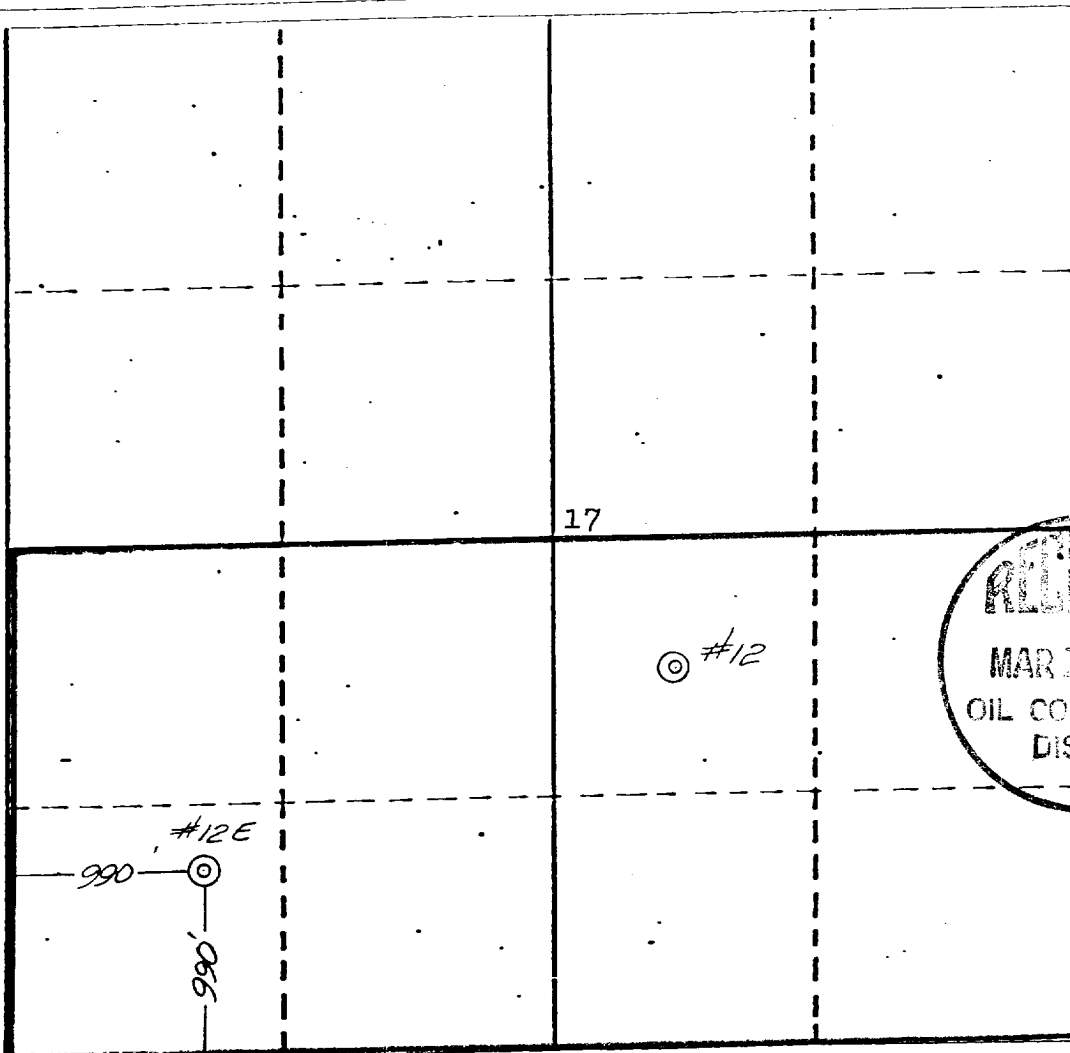
Owner GULF OIL CORPORATION		Lease APACHE FEDERAL		Well No. 12 E
Unit Letter M	Section 17	Township 24 NORTH	Range 5 WEST	County RIO ARriba
Actual Footage Location of Well: 990 feet from the SOUTH line and 990 feet from the WEST line Ground Level Elev. 6521 Producing Formation BASIN DAKOTA Pool BASIN DAKOTA Dedicated Acreage 320 Acres				

- Outline the acreage dedicated to the subject well by colored pencil or hachure marks on the plat below.
- If more than one lease is dedicated to the well, outline each and identify the ownership thereof (both as to working interest and royalty).
- If more than one lease of different ownership is dedicated to the well, have the interests of all owners been consolidated by communitization, unitization, force-pooling, etc?

☐ Yes ☐ No If answer is "yes," type of consolidation _____

If answer is "no," list the owners and tract descriptions which have actually been consolidated. (Use reverse side of this form if necessary.) _____

No allowable will be assigned to the well until all interests have been consolidated (by communitization, unitization, forced-pooling, or otherwise) or until a non-standard unit, eliminating such interests, has been approved by the Commission.



CERTIFICATION

I hereby certify that the information contained herein is true and complete to the best of my knowledge and belief.

Glyn Stone
Name

GLYN STONE

Position

AREA GAS ENGINEER

Company

GULF OIL CORPORATION

Date

FEBRUARY 26, 1981

I hereby certify that the well location shown on this plat was plotted from field notes of actual surveys made by me or under my supervision, and that the same are correct to the best of my knowledge and belief.

Michael Daly
Date Surveyed

February 18, 1981

Registered Professional Engineer
and/or Land Surveyor

Michael Daly

Certificate No.

5992

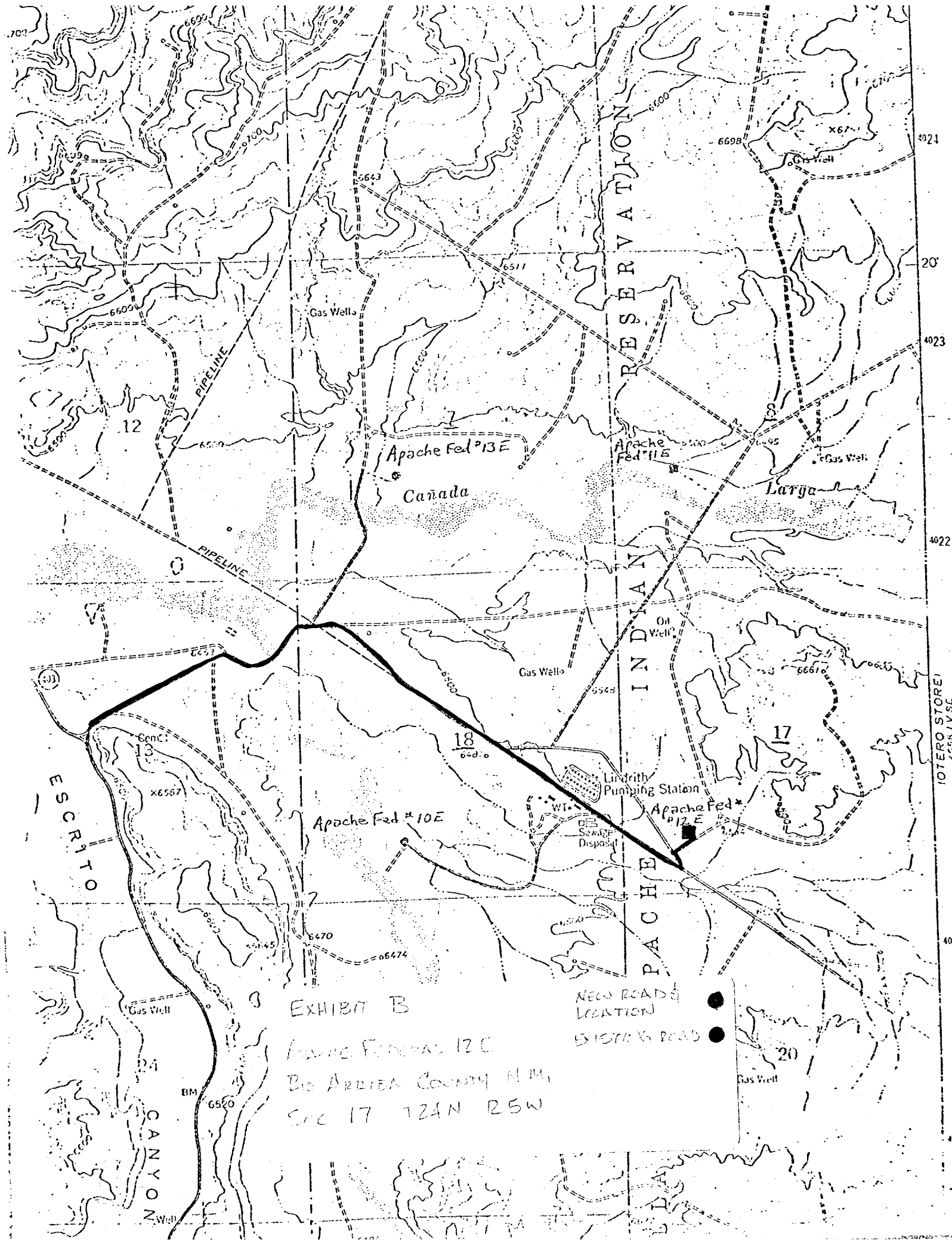


EXHIBIT B

INDIAN FEDERAL 12C
BIG ARBIEA COUNTY N.M.
SEC 17 T24N R5W

NEW ROAD LOCATION
EXISTING ROAD

10700 STORE
4355 IVSC