

UNITED STATES  
DEPARTMENT OF THE INTERIOR  
GEOLOGICAL SURVEY

30-039-22675

5. LEASE DESIGNATION AND SERIAL NO.

Jicarilla Lease Contract #6

6. IF INDIAN, ALLOTTEE OR TRIBE NAME

7. UNIT AGREEMENT NAME

8. FARM OR LEASE NAME

Apache Federal

9. WELL NO.

10E

10. FIELD AND POOL, OR WILDCAT

Basin Dakota

11. SEC., T., R., M., OR BLK.  
AND SURVEY OR AREA

Sec. 18, T24N, R5W

12. COUNTY OR PARISH 13. STATE

Rio Arriba

NM

## APPLICATION FOR PERMIT TO DRILL, DEEPEN, OR PLUG BACK

1a. TYPE OF WORK

DRILL ☒DEEPEN ☐PLUG BACK ☐

b. TYPE OF WELL

OIL  
WELL ☐GAS  
WELL ☒

OTHER

SINGLE  
ZONE ☐MULTIPLE  
ZONE ☐

2. NAME OF OPERATOR

Gulf Oil Corporation

3. ADDRESS OF OPERATOR

P. O. Box 670, Hobbs, New Mexico 88240

4. LOCATION OF WELL (Report location clearly and in accordance with any State requirements.)\*

At surface 950'  
N 990' FSL & 1700' FWL  
At proposed prod. zone

14. DISTANCE IN MILES AND DIRECTION FROM NEAREST TOWN OR POST OFFICE\*

Approximately 8 miles north of Counselors

15. DISTANCE FROM PROPOSED\*

LOCATION TO NEAREST  
PROPERTY OR LEASE LINE, FT.  
(Also to nearest drlg. unit line, if any)

18. DISTANCE FROM PROPOSED LOCATION\*

TO NEAREST WELL, DRILLING, COMPLETED,  
OR APPLIED FOR, ON THIS LEASE, FT.

16. NO. OF ACRES IN LEASE

2560

19. PROPOSED DEPTH

6700'

17. NO. OF ACRES ASSIGNED  
TO THIS WELL

320-5/321.50

20. ROTARY OR CABLE TOOLS

Rotary

21. ELEVATIONS (Show whether DF, RT, GR, etc.)

6467

22. APPROX. DATE WORK WILL START\*

March 15, 1981

## PROPOSED CASING AND CEMENTING PROGRAM

SIZE OF HOLE	SIZE OF CASING	WEIGHT PER FOOT	SETTING DEPTH	QUANTITY OF CEMENT
12 1/2"	8-5/8"	24.00#	500'	400 sx - circulated
7-7/8"	5 1/2"	15.50#	6700' *	to be determined by caliper log

NOTE: See attached BOP Drawing #2

Circulating Media: 0' - 500'  
500' - 4000'  
4000' - 6700'

Fresh water spud mud

Fresh water

Fresh water gel with the following properties:  
viscosity 32-37 sec, water loss 20-4 cc,  
weight 8.5-9.0 ppg.

Special Stipulation part 15C

Gas is Dedicated

IN ABOVE SPACE DESCRIBE PROPOSED PROGRAM: If proposal is to deepen or plug back, give data on present productive zone and proposed new productive zone. If proposal is to drill or deepen directionally, give pertinent data on subsurface locations and measured and true vertical depths. Give blowout preventer program, if any.

24.

SIGNED

L.C. Cauden

TITLE Area Production Manager

DATE

2-13-81

(This space for Federal or State office use)

PERMIT NO.

APPROVAL DATE

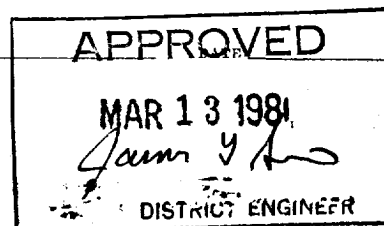
APPROVED BY

TITLE

CONDITIONS OF APPROVAL, IF ANY:

\*See Instructions On Reverse Side

NMOCC





NEW MEXICO OIL CONSERVATION COMMISSION  
WELL LOCATION AND ACREAGE DEDICATION PLAT

Supersedes C-128  
Effective 1-1-85

All distances must be from the outer boundaries of the Section.

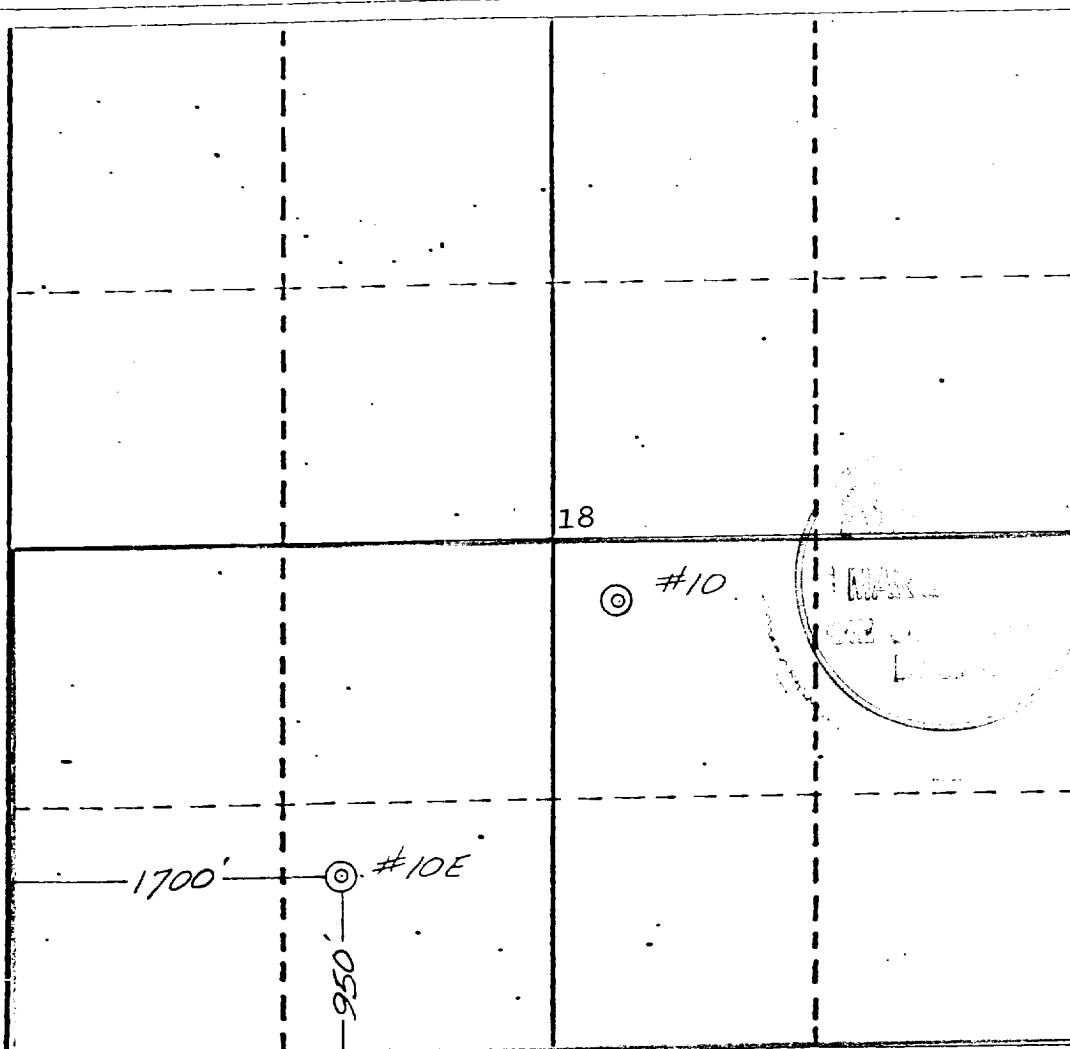
GULF OIL CORPORATION			Lease APACHE FEDERAL		Well No. #10 E
Unit Letter N	Section 18	Township 24 NORTH	Range 5 WEST	County RIO ARriba	
Actual Footage Location of Wells					
950	feet from the SOUTH	line and	1700	feet from the WEST	line
Ground Level Elev. 6467	Producing Formation BASIN DAKOTA		Pool BASIN DAKOTA		Dedicated Acres 321.50 320 Acres

1. Outline the acreage dedicated to the subject well by colored pencil or hatchure marks on the plat below.
2. If more than one lease is dedicated to the well, outline each and identify the ownership thereof (both as to working interest and royalty).
3. If more than one lease of different ownership is dedicated to the well, have the interests of all owners been consolidated by communitization, unitization, force-pooling, etc?

☐ Yes ☐ No If answer is "yes," type of consolidation \_\_\_\_\_

If answer is "no," list the owners and tract descriptions which have actually been consolidated. (Use reverse side of this form if necessary.) \_\_\_\_\_

No allowable will be assigned to the well until all interests have been consolidated (by communitization, unitization, forced-pooling, or otherwise) or until a non-standard unit, eliminating such interests, has been approved by the Commission.



CERTIFICATION

I hereby certify that the information contained herein is true and complete to the best of my knowledge and belief.

*Glyn Stone*  
Name

GLYN STONE  
Position  
AREA GAS ENGINEER

Company  
GULF OIL CORPORATION

Date  
FEBRUARY 26, 1981

I hereby certify that the well location shown on this plat is based on field notes, actual surveys made by me or under my supervision, and that the same is true and correct to the best of my knowledge and belief.

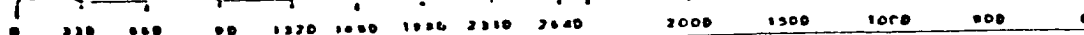


*Michael Daly*  
Date Surveyed  
February 18, 1981

Registered Professional Engineer  
and/or Land Surveyor

Michael Daly

Certificate No.  
5992





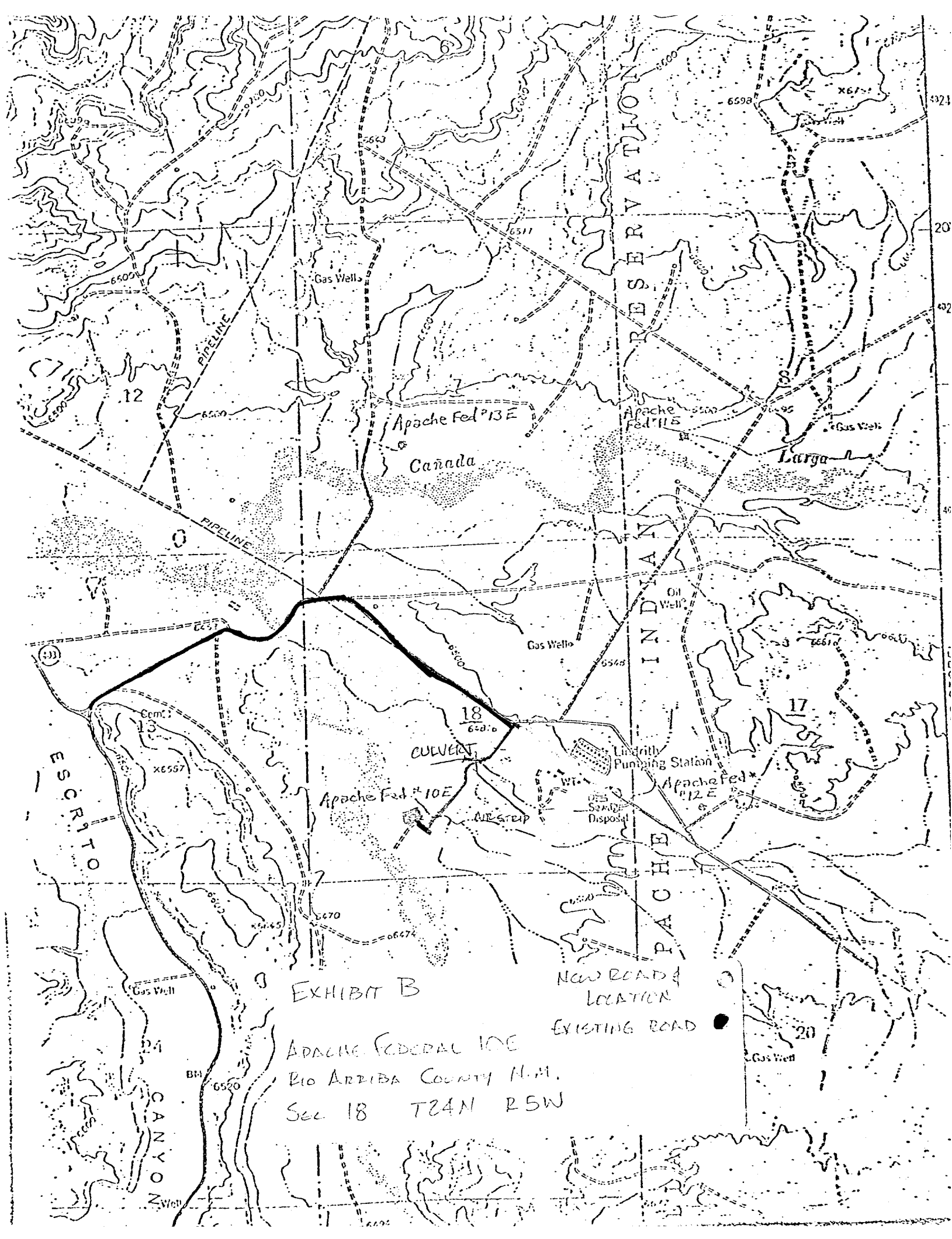


EXHIBIT B

APACHE FEDERAL 10E  
RIO ARIZONA COUNTY N.M.  
Sec 18 T24N R5W