

UNITED STATES  
DEPARTMENT OF THE INTERIOR  
GEOLOGICAL SURVEY

## APPLICATION FOR PERMIT TO DRILL, DEEPEN, OR PLUG BACK

## 1a. TYPE OF WORK

DRILL ☒DEEPEN ☐PLUG BACK ☐

## b. TYPE OF WELL

OIL  
WELL ☒GAS  
WELL ☐OTHER ☐SINGLE  
ZONE ☐MULTIPLE  
ZONE ☒

## 2. NAME OF OPERATOR

CHACE OIL COMPANY, INC.

## 3. ADDRESS OF OPERATOR

313 Washington S.E., Albuquerque, NM 87108

## 4. LOCATION OF WELL (Report location clearly and in accordance with any State requirements.)\*

At surface

Unit "C"

790' NL &amp; 1850' WL

At proposed prod. zone

## 14. DISTANCE IN MILES AND DIRECTION FROM NEAREST TOWN OR POST OFFICE\*

Lindrith, NM 12 miles N.E.

## 15. DISTANCE FROM PROPOSED\*

LOCATION TO NEAREST  
PROPERTY OR LEASE LINE, FT.  
(Also to nearest drig. unit line, if any)

790'

## 16. NO. OF ACRES IN LEASE

2560

18. DISTANCE FROM PROPOSED LOCATION\*  
TO NEAREST WELL, DRILLING, COMPLETED,  
OR APPLIED FOR, ON THIS LEASE, FT.

3000'

## 19. PROPOSED DEPTH

7600

## 21. ELEVATIONS (Show whether DF, RT, GR, etc.)

6963 GR

## 23.

## PROPOSED CASING AND CEMENTING PROGRAM

SIZE OF HOLE	SIZE OF CASING	WEIGHT PER FOOT	SETTING DEPTH	QUANTITY OF CEMENT
13-1/2	8-5/8	26#	250'	225 sxs

Drill 265' 13½ surface hole, set 250' 8-5/8" csg. Cement to surface with 225 sxs. Using oil base mud (15%) oil and adequate BOP drill a 7-7/8" hole to 7600' to test the Dakota formation. If productive, run 4½" 10.5# or heavier casing to total depth and cement in stages to cover the producing zones including the Pictured Cliffs formation. If non-productive, plug and abandon. The BOP to be a Schaeffer double gate Hydraulic tested to 5000#.

JUN 26 1978

U.S. GEOLOGICAL SURVEY

IN ABOVE SPACE DESCRIBE PROPOSED PROGRAM: If proposal is to deepen or plug back, give data on present productive zone and proposed new productive zone. If proposal is to drill or deepen directionally, give pertinent data on subsurface locations and measured and true vertical depths. Give blowout preventer program, if any.

## 24.

SIGNED

*Loyce M. Carey*

TITLE

President

DATE

6-22-78

(This space for Federal or State office use)

PERMIT NO.

APPROVAL DATE

APPROVED BY

TITLE

CONDITIONS OF APPROVAL, IF ANY:

*OK Frank*

\*See Instructions On Reverse Side

NEW MEXICO OIL CONSERVATION COMMISSION  
WELL LOCATION AND ACREAGE DEDICATION PLAT

Form C-102  
Supersedes C-128  
Effective 1-1-75

All distances must be from the outer boundaries of the Section

Operator <b>CHACE OIL COMPANY</b>		Lease <b>CHACE JICARILLA 70</b>		Well No. <b>5</b>
Unit Letter <b>C</b>	Section <b>27</b>	Township <b>24 NORTH</b>	Range <b>4 WEST</b>	County <b>RIO ARriba</b>

Actual Footage Location of Well:

**790** feet from the **NORTH** line and **1850** feet from the **WEST** line

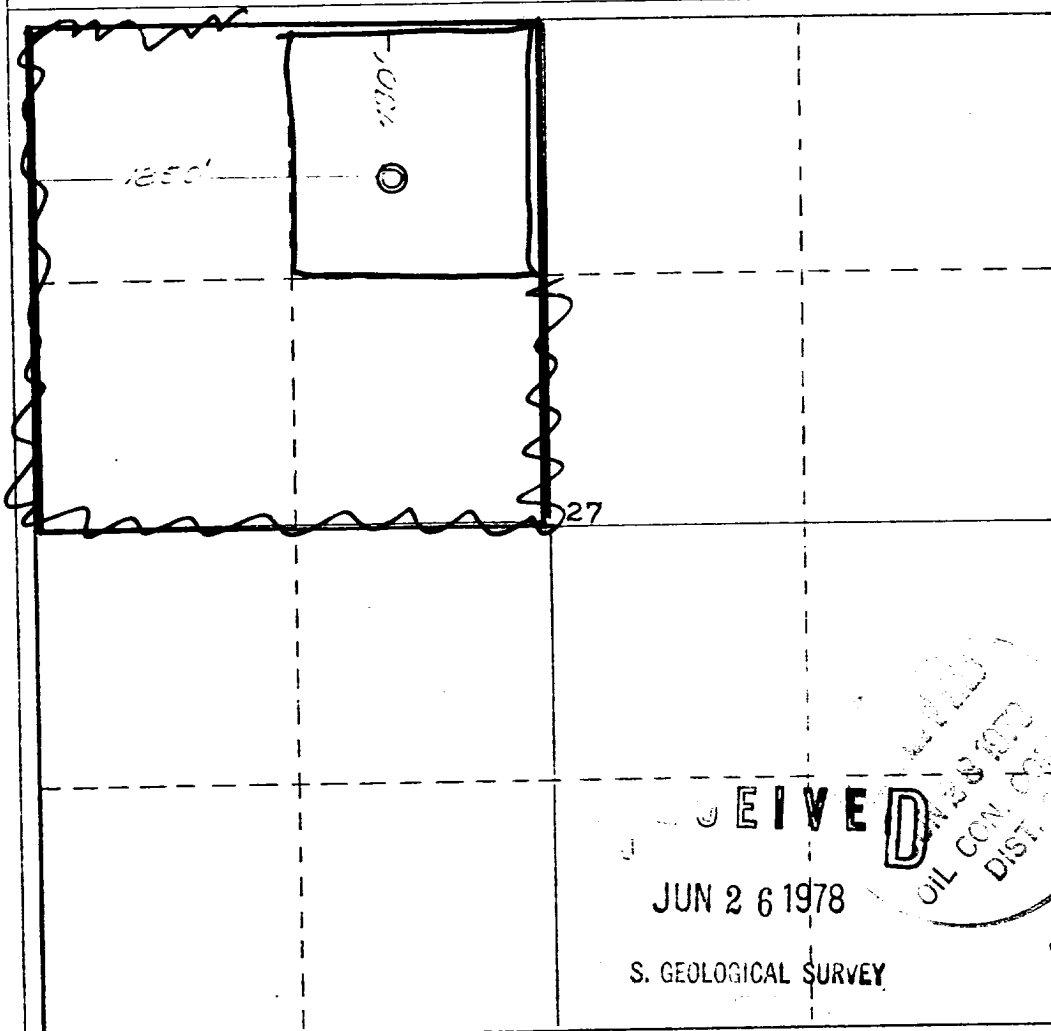
Ground Level Elev. <b>6963</b>	Producing Formation <b>GALLUP-DAKOTA</b>	Pool <b>LINORITH GALLUP-DAKOTA SOUTH</b>	Dedicated Acreage: <b>16.40</b> Acres
-----------------------------------	---	---	--

1. Outline the acreage dedicated to the subject well by colored pencil or hatchure marks on the plat below.
2. If more than one lease is dedicated to the well, outline each and identify the ownership thereof (both as to working interest and royalty).
3. If more than one lease of different ownership is dedicated to the well, have the interests of all owners been consolidated by communitization, unitization, force-pooling, etc?

☐ Yes ☐ No If answer is "yes," type of consolidation \_\_\_\_\_

If answer is "no," list the owners and tract descriptions which have actually been consolidated. (Use reverse side of this form if necessary.) \_\_\_\_\_

No allowable will be assigned to the well until all interests have been consolidated (by communitization, unitization, forced-pooling, or otherwise) or until a non-standard unit, eliminating such interests, has been approved by the Commission.



CERTIFICATION

I hereby certify that the information contained herein is true and complete to the best of my knowledge and belief.

*Royce McCary*  
Name

Royce McCary

Position  
President

Company  
Chace Oil Company, Inc

Date  
June 22, 1978

I hereby certify that the well location shown on this plat was plotted from field notes of actual surveys made by me or under my supervision, and that the same is true and correct to the best of my knowledge and belief.

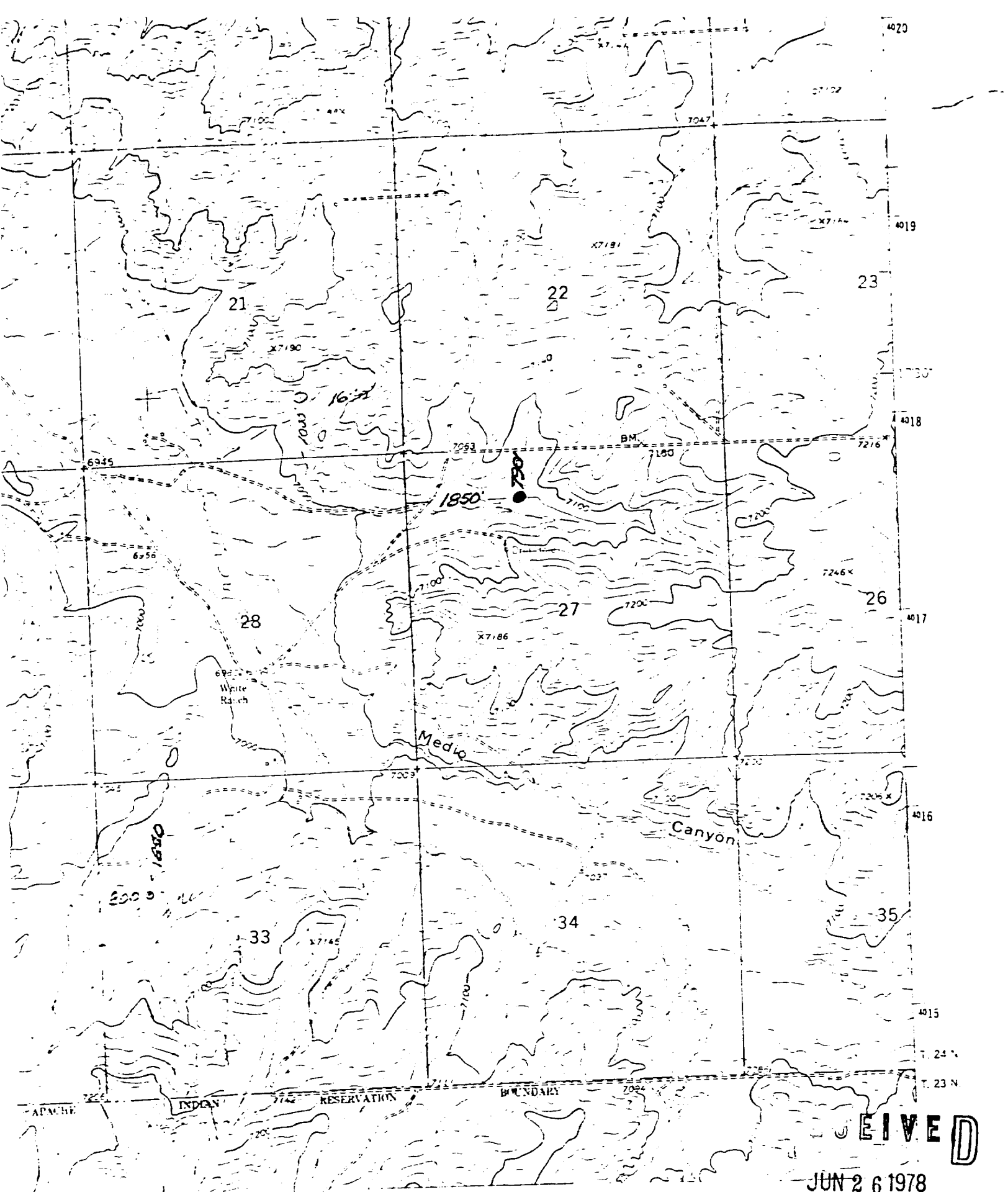
Date Surveyed  
6 June 1978

Registered Professional Engineer  
and Land Surveyor

*James P. Lease*  
James P. Lease

Certificate No.

0 500 1000 1500 2000 2500 2640 2310 1980 1650 1320 990 660 330



CHACE OIL COMPANY  
Jicarilla # 70-5  
NW $\frac{1}{4}$  Sec. 27, T 24 N, R 4 W.  
Rio Arriba County, New Mexico

JUN 26 1978

RECEIVED

1500-14

DEVELOPMENT PLAN FOR SURFACE RESUME

Chace Oil Company, Inc. Jicarilla 70-5,  
Unit "C" 790' NL & 1850' WL, Section 27, T24N, R4W,  
Rio Arriba County, New Mexico

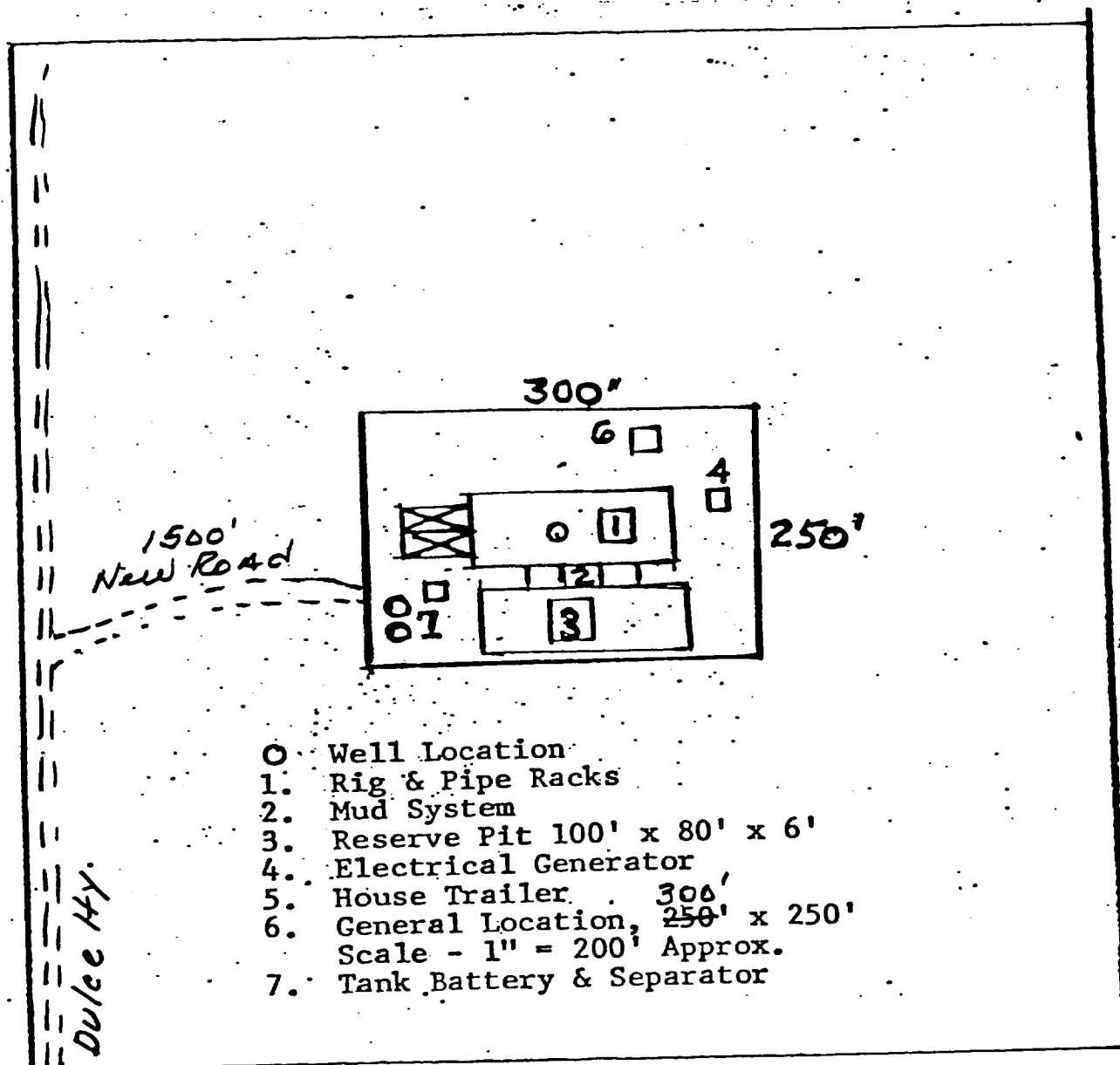
1. Location and vicinity map, San Juan Engineering Company, Exit Hwy 44 on Dulce Hwy.
2. 1500' of new road to be compacted to connect drill site with existing area roads. New road to be 20' in width.
3. Well site is approximately 2600' east of the Chace Jicarilla 70-2 oil well in Unit "B", Section 28, T24N, R4W.
4. Roads shown on vicinity plat and location plat.
5. In case of production (gas) well will be tied into a gathering line. Tank batteries and separators are shown on plat.
6. Water to come from general water hole on reservation.
7. All trash and waste material will be placed in the mud pit and covered. No additional surface to be used, such as air strips or campsites.
8. None
9. None
10. Rig layout shown on township plat attached.
11. The topography is rolling, covered with sagebrush, scattered cedar, pinon trees, broom grass and snakeweed.
12. Drilling pad to be completed. A 5' cut on north side of location will be required.
13. After well completion, location to be restored to original condition, and sodded with required seeds.
14. Field representative to contact is Royce McCary, telephone 266-5562 at 313 Washington S.E., Albuquerque, NM 87108.

RECEIVED

JUN 26 1978

U. S. GEOLOGICAL SURVEY  
BOSTON, MASS.

Jicarrilla 70-5



Unit "C" 790' NL & 1850' WL

SEC. 27 T24N-R4W Rio Arriba Co.

N.M.

RECEIVED

JUN 26 1978

U. S. GEOLOGICAL SURVEY

I hereby certify that I, or persons under my direct supervision, have inspected the proposed drillsite and access route; that I am familiar with the conditions which presently exist; that the statements made in this plan are, to the best of my knowledge, true and correct; and, that the work associated with the operations proposed herein will be performed by Chace Oil Company, Inc. and its contractors and subcontractors in conformity with this plan and the terms and conditions under which it is approved.

June 22, 1978  
Date

Royce M. Cary  
Name  
President  
Title

RECEIVED  
JUN 26 1978

U.S. GEOLOGICAL SURVEY

Article II - B Paragraph 3

Blowout Preventor to be the standard 10" Schaeffer  
Doublegate Hydraulic BOP tested to 5000 psia.  
BOP tested when leaving rental warehouse and checked  
for efficient operation daily.

RECEIVED

JUN 26 1978

S. GEOLOGICAL SURVEY