

NO. OF COPIES RECEIVED	
DISTRIBUTION	
SANTA FE	
FILE	
U.S.G.S.	
LAND OFFICE	
OPERATOR	

5A. Indicate Type of Lease
STATE ☐ FCC ☒

5. State Oil & Gas Lease No.

APPLICATION FOR PERMIT TO DRILL, DEEPEN, OR PLUG BACK

7. Unit Agreement Name

8. Firm or Lessee Name

Puppa Manche

9. Well No.

#5

10. Field and Pool, or Wildcat

South, Blanco P.C.

12. County

Rio Arriba

1a. Type of Work
DRILL ☒ DEEPEN ☐ PLUG BACK ☐
b. Type of Well
OIL WELL ☐ GAS WELL ☒ OTHER ☐ SINGLE ZONE ☒ MULTIPLE ZONE ☐

2. Name of Operator
Jerome P. McHugh

3. Address of Operator
P O Box 208, Farmington, NM 87401

4. Location of Well
UNIT LETTER B LOCATED 790 FEET FROM THE North LINE
AND 1850' FEET FROM THE East LINE OF SEC. 35 TWP. 24N RGE. 1W

13. Proposed Depth 2900'	19A. Formation Pictured Cliffs	20. Rotary or C.T. Rotary
21. Elevations (show whether D.F., R.T., etc.) 7279' GL	21A. Kind & Status Plug. Bond	21B. Drilling Contractor James Drilling Co.
		22. Approx. Date Work will start ASAP

23. PROPOSED CASING AND CEMENT PROGRAM

SIZE OF HOLE	SIZE OF CASING	WEIGHT PER FOOT	SETTING DEPTH	SACKS OF CEMENT	EST. TOP
12-1/2"	8-5/8"	24#	90'	60 sx	Surface
6-1/4"	4-1/2"	9.5#	2900'	200 sx	Surface

Plan to drill with mud to test P.C. formation. If productive, will run 4 1/2" casing to TD, selectively perforate, frac, clean out after frac, run tubing, and put well on production. Plan to use hydraulic BOP, bag type. Wellhead equipment will be 1000# psi W.P., non-flanged.

GAS NOT DEDICATED



APPROVAL VALID
FOR 90 DAYS UNLESS
DRILLING COMMENCED

EXPIRES 10-10-81

IN ABOVE SPACE DESCRIBE PROPOSED PROGRAM; IF PROPOSAL IS TO DEEPEN OR PLUG BACK, GIVE DATA ON PRESENT PRODUCTIVE ZONE AND PROPOSED NEW PRODUCTIVE ZONE. GIVE BLOWOUT PREVENTER PROGRAM, IF ANY.

I hereby certify that the information above is true and complete to the best of my knowledge and belief.

Signed Jerome P. McHugh Jerome P. McHugh Agent Date 4-8-81

(This space for State Use)

APPROVED BY Frank T. O'Neil TITLE SUPERVISOR DISTRICT #3 DATE APR 10 1981

CONDITIONS OF APPROVAL, IF ANY:

OIL CONSERVATION DIVISION

STATE OF NEW MEXICO
ENERGY AND MINERALS DEPARTMENTP. O. BOX 2088
SANTA FE, NEW MEXICO 87501Form C-102
Revised 10-1-78

All distances must be from the outer boundaries of the Section.

Operator Jerome P. McHugh			Lease Puppa Manche		Well No. 5
Unit Letter B	Section 35	Township 24 North	Range 1 West	County Rio Arriba	
Actual Footage Location of Well:					
79C	feet from the	North	line and	1850	feet from the East line
Ground Level Elev. 7279	Producing Formation Pictured Cliffs		Pool South Blanco P.C.		Dedicated Acreage: 160 Acres

1. Outline the acreage dedicated to the subject well by colored pencil or hachure marks on the plat below.

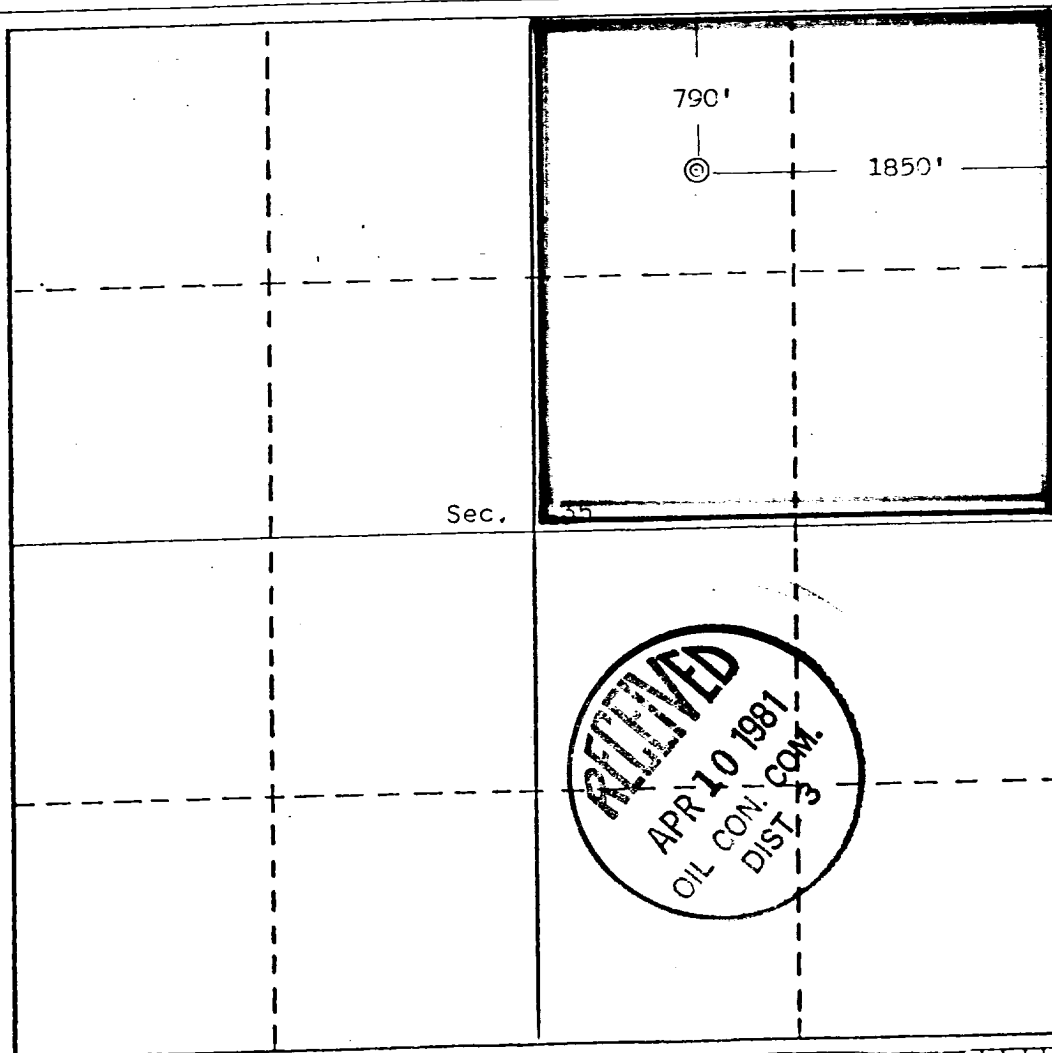
2. If more than one lease is dedicated to the well, outline each and identify the ownership thereof (both as to working interest and royalty).

3. If more than one lease of different ownership is dedicated to the well, have the interests of all owners been consolidated by communitization, unitization, force-pooling, etc?

☐ Yes ☐ No If answer is "yes," type of consolidation _____

If answer is "no," list the owners and tract descriptions which have actually been consolidated. (Use reverse side of this form if necessary.) _____

No allowable will be assigned to the well until all interests have been consolidated (by communitization, unitization, forced-pooling, or otherwise) or until a non-standard unit, eliminating such interests, has been approved by the Division.



CERTIFICATION

I hereby certify that the information contained herein is true and complete to the best of my knowledge and belief.

Name

Jerome P. McHugh Jr.

Position

Agent

Company

Dugan Production Corp.

Date

4-8-81

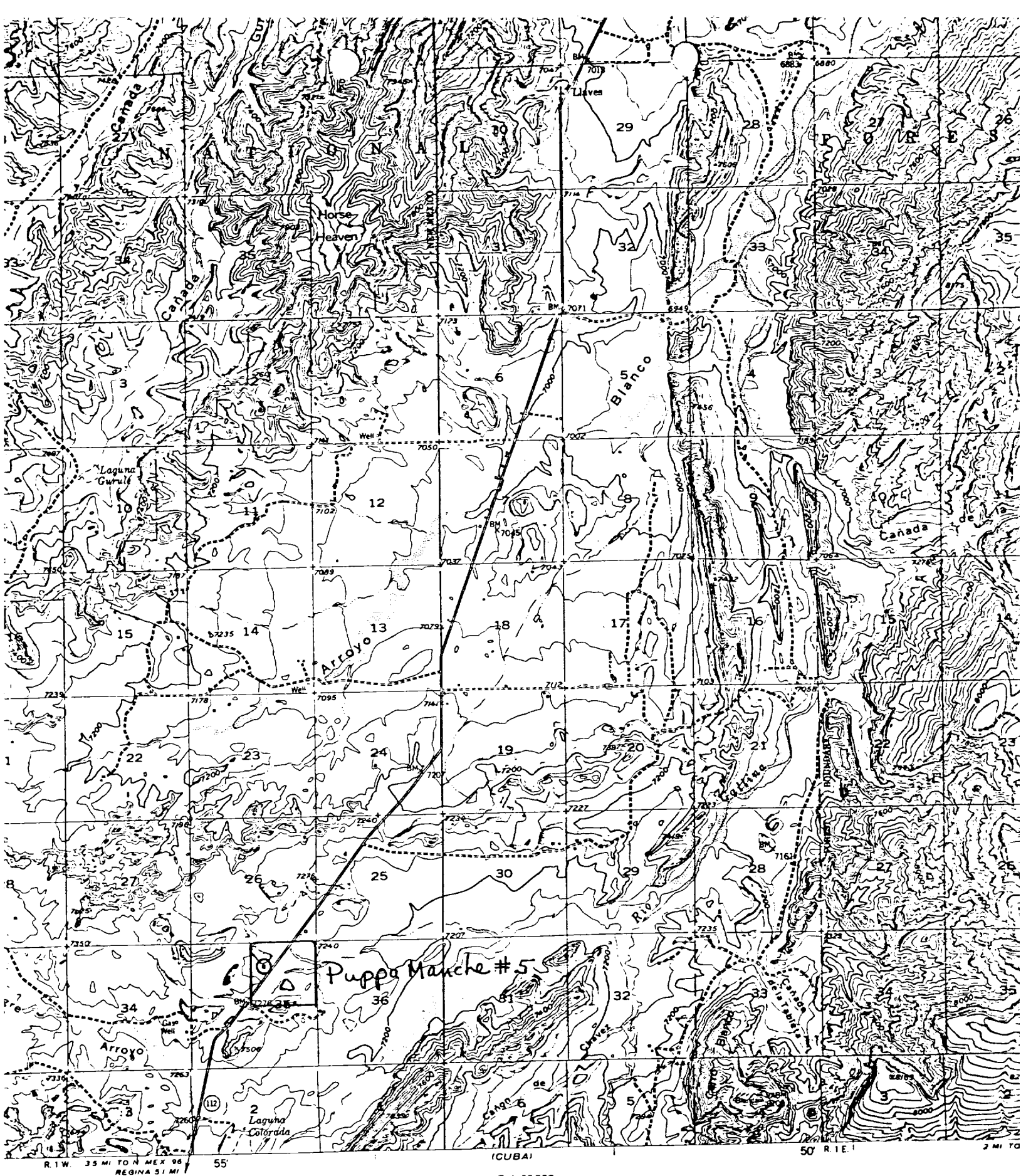
I hereby certify that the location shown on this plat was located from field notes of actual surveys made by me or under my supervision, and that the same is true and correct to the best of my knowledge and belief.

Date Surveyed

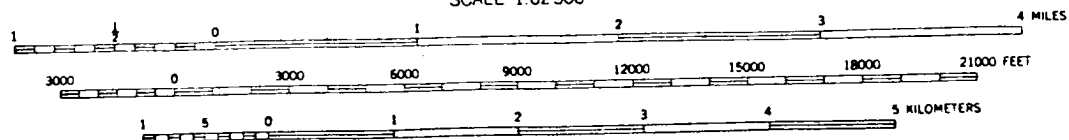
April 3, 1981

Registered Professional Engineer
and/or Land Surveyor

Certificate No. 5979
Edgar L. Risenhoover, L.S.



RUE NORTH
MAGNETIC NORTH
134°



CONTOUR INTERVAL 40 FEET
DATUM IS MEAN SEA LEVEL

NEW MEXICO

