

UNITED STATES  
DEPARTMENT OF THE INTERIOR  
GEOLOGICAL SURVEY

30-039-22711

APPLICATION FOR PERMIT TO DRILL, DEEPEN, OR PLUG BACK

1a. TYPE OF WORK  
DRILL  DEEPEN  PLUG BACK

b. TYPE OF WELL  
OIL WELL  GAS WELL  OTHER   
SINGLE ZONE  MULTIPLE ZONE

2. NAME OF OPERATOR  
Mobil Producing TX. & N.M. Inc.

3. ADDRESS OF OPERATOR  
9 Greenway Plaza, Suite 2700, Houston, TX 77046

4. LOCATION OF WELL (Report location clearly and in accordance with any State requirements.)  
At surface 860' FSL & 800' FWL, Sec. 15, T24N, R3W  
At proposed prod. zone Same as Surface

14. DISTANCE IN MILES AND DIRECTION FROM NEAREST TOWN OR POST OFFICE\*  
50 miles Southeast from Farmington

15. DISTANCE FROM PROPOSED LOCATION TO NEAREST PROPERTY OR LEASE LINE, FT. (Also to nearest drlg. unit line, if any)  
6074' (800')

16. NO. OF ACRES IN LEASE  
26,365.43

17. NO. OF ACRES ASSIGNED TO THIS WELL  
160

18. DISTANCE FROM PROPOSED LOCATION TO NEAREST WELL, DRILLING, COMPLETED, OR APPLIED FOR, ON THIS LEASE, FT.  
2292' SW to Well #16

19. PROPOSED DEPTH  
8000'

20. ROTARY OR CABLE TOOLS  
Rotary

21. ELEVATIONS (Show whether DF, RT, GR, etc.)  
7052' - GR

DRILLING OPERATIONS AUTHORIZED ARE SUBJECT TO COMPLIANCE WITH ATTACHED GENERAL REQUIREMENTS

22. APPROX. DATE WORK WILL START\*  
June 1, 1981

23. PROPOSED CASING AND CEMENTING PROGRAM

SIZE OF HOLE	SIZE OF CASING	WEIGHT PER FOOT	SETTING DEPTH	QUANTITY OF CEMENT
17-1/2"	12-3/4"*	45.51# H-40	0 - 400'	1. Circulate to surface w/300 sx
11"	8-5/8"*	24# S-80	0 - 3100'	2. Circulate to surface w/900 sx
		28# S-80	3100 - 3900'	
7-7/8"	5-1/2"*	15.5# K-55	0 - 7000'	3. Circulate to Approx. 3800'
		17# K-55	7000 - 7700'	w/950 sx in two stages

\*all casing will be new

CEMENTING PROGRAM

- 1. Class B with 2% CaCl<sub>2</sub>
- 2. Lite weight & Class B
- 3. Lite weight & Class B

MUD PROGRAM

Depth	Type of Mud	Weight	Viscosity	ph	Water Loss
0-400'	Spud Mud	9.0 - 9.2	35-45	9+	NC
400'-TD	Fresh Water Gel	8.8	35-40	9+	10 cc's

BLOWOUT PREVENTER PROGRAM

See Attachment

LOGGING PROGRAM:

Type	Depth
IES	Surf. to TD
FDL/CNL	Surf. to TD

IN ABOVE SPACE DESCRIBE PROPOSED PROGRAM: If proposal is to deepen or plug back, give data on present productive zone and proposed new productive zone. If proposal is to drill or deepen directionally, give pertinent data on subsurface locations and measured and true vertical depths. Give blowout preventer program, if any.

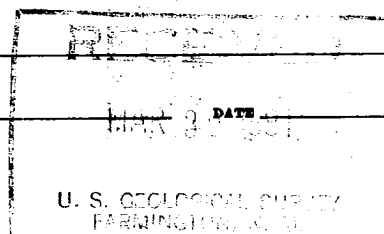
24. SIGNED Aut Bond J.A. Morris TITLE Regulatory Engineering Supervisor DATE 3-16-81

(This space for Federal or State office use)

PERMIT NO. \_\_\_\_\_ APPROVAL DATE \_\_\_\_\_

APPROVED  
APPROVED BY JAMES F. SIMS  
CONDITIONS OF APPROVAL, IF ANY:  
APR 13 1981  
JAMES F. SIMS  
DISTRICT ENGINEER

TITLE \_\_\_\_\_ DATE \_\_\_\_\_



\*See Instructions On Reverse Side

NMOCC

NEW MEXICO OIL CONSERVATION COMMISSION  
WELL LOCATION AND ACREAGE DEDICATION PLAT

Form O-102  
Supersedes C-128  
Effective 1-1-65

All distances must be from the outer boundaries of the Section.

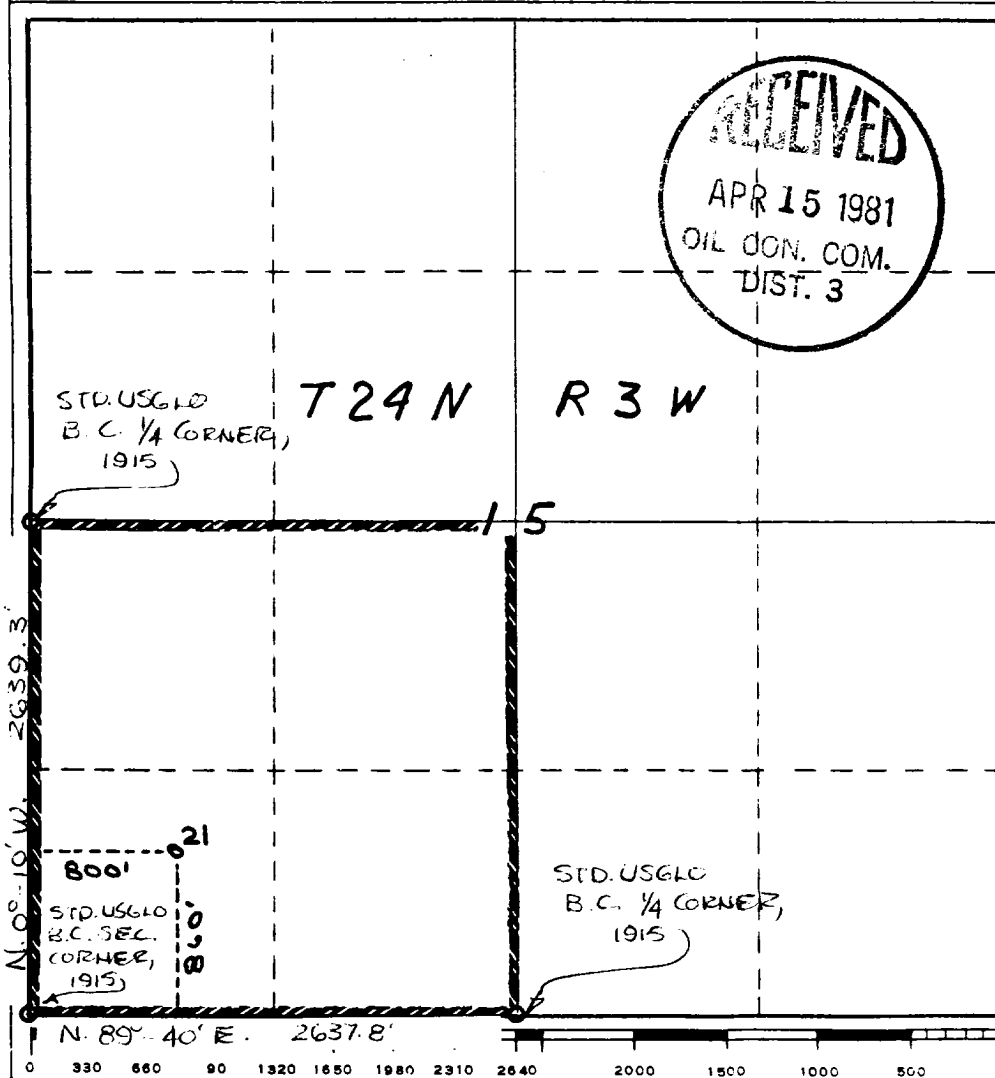
Operator <b>Mobil Producing TX. &amp; N.M. Inc.</b>		Lease <b>Lindrith B Unit</b>			Well No. <b>21</b>
Unit Letter <b>M</b>	Section <b>15</b>	Township <b>24N</b>	Range <b>3W</b>	County <b>Rio Arriba</b>	
Actual Footage Location of Well: <b>860</b> feet from the <b>South</b> line and <b>800</b> feet from the <b>West</b> line					
Ground Level Elev. <b>7052'</b>	Producing Formation <b>Dakota</b>		Pool <b>Chacon-Dakota Associated</b>	Dedicated Acreage: <b>160</b> Acres	

1. Outline the acreage dedicated to the subject well by colored pencil or hachure marks on the plat below.
2. If more than one lease is dedicated to the well, outline each and identify the ownership thereof (both as to working interest and royalty).
3. If more than one lease of different ownership is dedicated to the well, have the interests of all owners been consolidated by communitization, unitization, force-pooling, etc?

Yes     No    If answer is "yes," type of consolidation: Unitization

If answer is "no," list the owners and tract descriptions which have actually been consolidated. (Use reverse side of this form if necessary.) \_\_\_\_\_

No allowable will be assigned to the well until all interests have been consolidated (by communitization, unitization, forced-pooling, or otherwise) or until a non-standard unit, eliminating such interests, has been approved by the Commission.



CERTIFICATION

I hereby certify that the information contained herein is true and complete to the best of my knowledge and belief.

*A. D. Bond*  
Name

A.D. Bond  
Position **Regulatory Engineering Coordinator II**

Company **Mobil Producing TX. & N.M. Inc.**

Date **3-16-81**

I hereby certify that the well location shown on this plat was plotted from field notes of actual survey made by me or under my supervision and that the same is true and correct to the best of my knowledge and belief.

*H.A. Carson, Jr.*  
February 13, 1981

Date Surveyed

Registered Professional Engineer and/or Land Surveyor

**H.A. Carson, Jr.**

Certificate No.  
**5063**

