

UNITED STATES
DEPARTMENT OF THE INTERIOR
GEOLOGICAL SURVEY

30-039-22713

APPLICATION FOR PERMIT TO DRILL, DEEPEN, OR PLUG BACK

1a. TYPE OF WORK DRILL ☒ DEEPEN ☐ PLUG BACK ☐

b. TYPE OF WELL
OIL WELL ☒ GAS WELL ☐ OTHER ☐ SINGLE ZONE ☒ MULTIPLE ZONE ☐

2. NAME OF OPERATOR
Mobil Producing TX. & N.M. Inc.

3. ADDRESS OF OPERATOR
Nine Greenway Plaza, Suite 2700, Houston, TX 77046

4. LOCATION OF WELL (Report location clearly and in accordance with any State requirements.)
At surface 1735' FNL & 1090' FWL, Sec. 22, T24N, R3W

At proposed prod. zone
Same as surface

14. DISTANCE IN MILES AND DIRECTION FROM NEAREST TOWN OR POST OFFICE*
50 miles Southeast from Farmington

15. DISTANCE FROM PROPOSED* 6364'
LOCATION TO NEAREST PROPERTY OR LEASE LINE, FT. (Also to nearest drlg. unit line, if any) (904')

16. NO. OF ACRES IN LEASE
26,365.43 2560

17. NO. OF ACRES ASSIGNED TO THIS WELL
160

18. DISTANCE FROM PROPOSED LOCATION* TO NEAREST WELL, DRILLING, COMPLETED, OR APPLIED FOR, ON THIS LEASE, FT.
2103' NW to well #16 8000'

20. ROTARY OR CABLE TOOLS
Rotary

21. ELEVATIONS (Show whether DF, RT, GR, etc.)
7096' - GR

22. APPROX. DATE WORK WILL START*
May 15, 1981

23. PROPOSED CASING AND CEMENTING PROGRAM

This action is subject to administrative review.

SIZE OF HOLE	SIZE OF CASING	WEIGHT PER FOOT	SETTING DEPTH	QUANTITY OF CEMENT
17-1/2"	12-3/4"*	45.51# H-40	0-1400'	1. Circulate to surf. w/300 sx.
11"	8-5/8"*	24# S-80	0-3100'	2. Circulate to surf. w/900 sx
		28# S-80	3100-3900'	3. Circulate to Approx. 3800'
7-7/8"	5-1/2"*	15.5# K-55	0-7000'	4. Circulate to approx. 7700' w/950 sx in two stages
		17# K-55	7000-7700'	

*All casing will be new.

CEMENTING PROGRAM

- Class B with 2% CaCl₂.
- Lite weight & Class B
- Lite weight & Class B

MUD PROGRAM

Depth	Type of Mud	Weight	Viscosity	ph	Water Loss
0-400'	Spud Mud	9.0-9.2	35-45	9+	Nc
400 - TD	Fresh Water Gel	8.8	35-40	9+	10 cc's

BLOWOUT PREVENTER PROGRAM

See Attachment

LOGGING PROGRAM:

Type	Depth
IES	Surf. to TD
FDL/CNL	Surf. to TD

IN ABOVE SPACE DESCRIBE PROPOSED PROGRAM: If proposal is to deepen or plug back, give data on present productive zone and proposed new productive zone. If proposal is to drill or deepen directionally, give pertinent data on subsurface locations and measured and true vertical depths. Give blowout preventer program, if any.

24. SIGNED Ant Bond Jr J.A. Morris Regulatory Engineering
TITLE Supervisor DATE 3-16-81

(This space for Federal or State office use)

PERMIT TO DRILL, DEEPEN, OR PLUG BACK
AS AMENDED
APPROVED BY JAMES F. SIMS
CONDITIONS OF APPROVAL, IF ANY:
APR 13 1981
JAMES F. SIMS
DISTRICT ENGINEER

APPROVAL DATE
TITLE
DATE

*See Instructions On Reverse Side

NM000

NEW MEXICO OIL CONSERVATION COMMISSION
WELL LOCATION AND ACREAGE DEDICATION PLAT

Form C-102
Supersedes C-128
Effective 1-1-65

All distances must be from the outer boundaries of the Section.

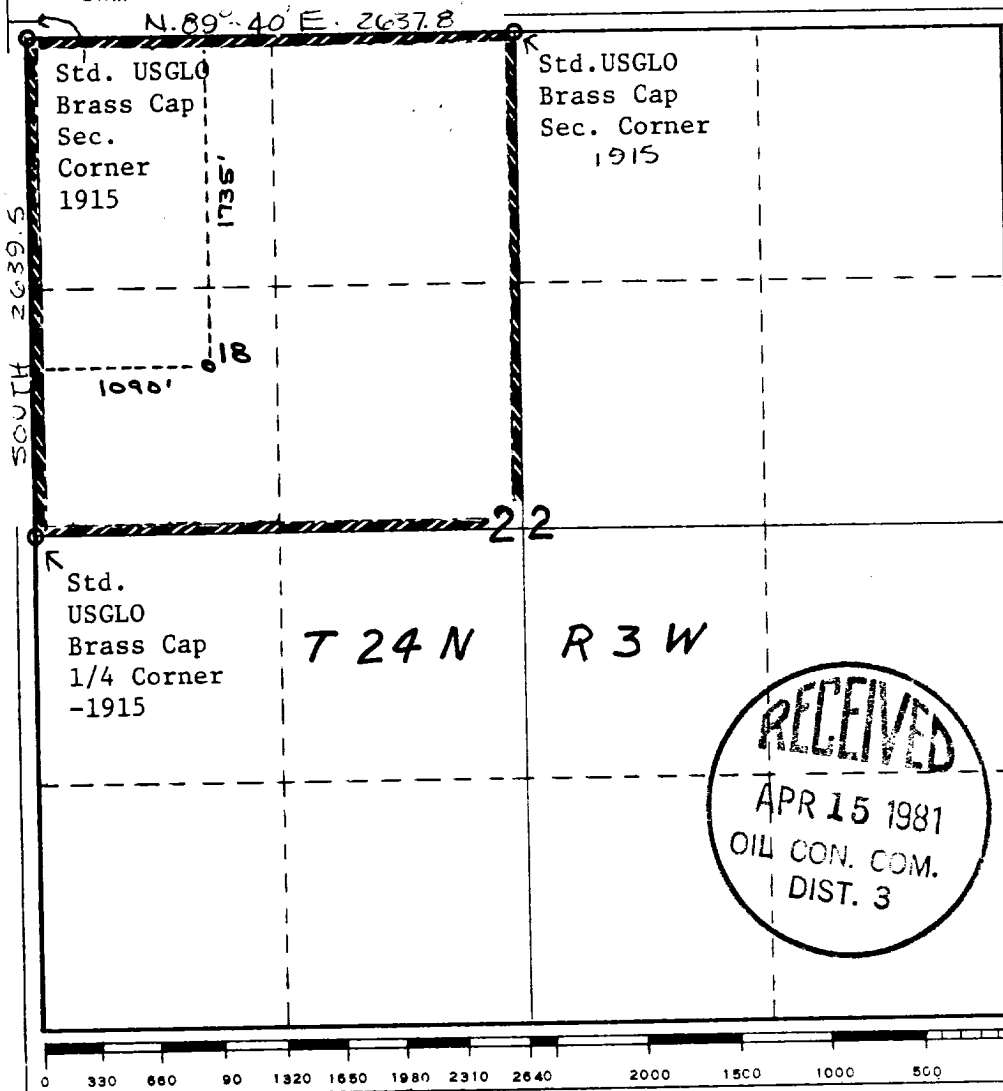
Operator Mobil Producing TX. & N.M. Inc.		Lease Lindrith B Unit		Well No. 18
Unit Letter E	Section 22	Township 24N	Range 3W	County Rio Arriba
Actual Footage Location of Well: 1735 feet from the North line and 1090 feet from the West line				
Ground Level Elev. 7096'	Producing Formation Dakota	Pool Chacon-Dakota Associated	Dedicated Acreage: 160 Acres	

1. Outline the acreage dedicated to the subject well by colored pencil or hachure marks on the plat below.
2. If more than one lease is dedicated to the well, outline each and identify the ownership thereof (both as to working interest and royalty).
3. If more than one lease of different ownership is dedicated to the well, have the interests of all owners been consolidated by communitization, unitization, force-pooling, etc?

☒ Yes ☐ No If answer is "yes," type of consolidation Unitization

If answer is "no," list the owners and tract descriptions which have actually been consolidated. (Use reverse side of this form if necessary.)

No allowable will be assigned to the well until all interests have been consolidated (by communitization, unitization, forced-pooling, or otherwise) or until a non-standard unit, eliminating such interests, has been approved by the Commission



CERTIFICATION

I hereby certify that the information contained herein is true and complete to the best of my knowledge and belief.

A.D. Bond
Name
A.D. Bond
Position **Regulatory Engineering Coordinator II**
Company **Mobil Producing TX. & N.M. Inc.**

Date **February 13, 1981**
I hereby certify that the location shown on this plat was plotted from field notes of actual surveys made by me or under my supervision and that the same is true and correct to the best of my knowledge.
H.A. Carson Jr.
February 13, 1981

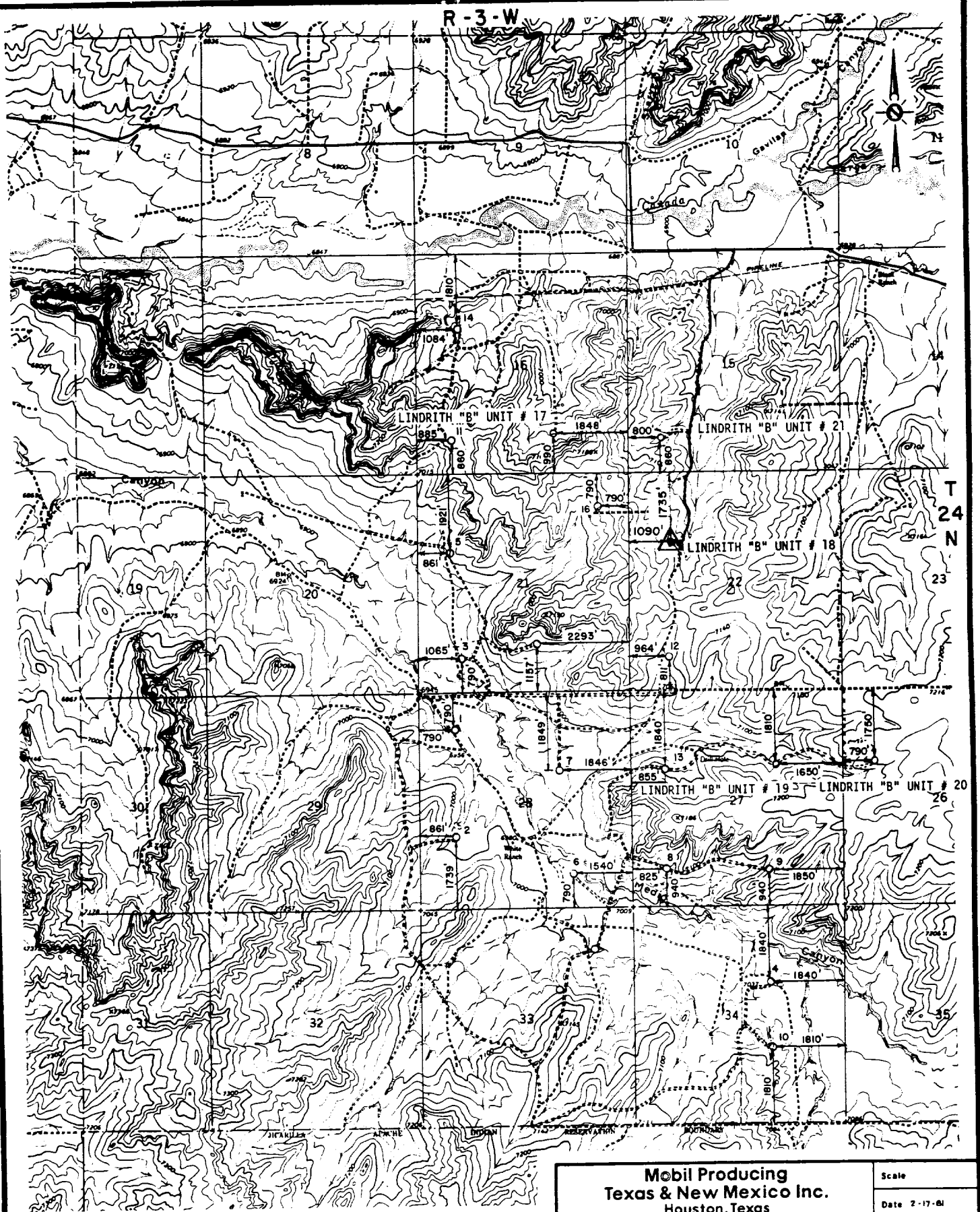
Date Surveyed

Registered Professional Engineer and/or Land Surveyor

H.A. Carson, Jr.

Certificate No.

5063



SCALE
0 2000 4000 1 MI.

**Mobil Producing
Texas & New Mexico Inc.
Houston, Texas**

LINDRITH "B" UNIT
VICINITY PLAT
RIO ARRIBA CO., NEW MEXICO
MAP "B"

Scale

Date 2-17-81
Drawn J.W.J.
Checked
Approved
Revised