

UNITED STATES
DEPARTMENT OF THE INTERIOR
GEOLOGICAL SURVEY

APPLICATION FOR PERMIT TO DRILL, DEEPEN, OR PLUG BACK

1a. TYPE OF WORK

DRILL ☒DEEPEN ☐PLUG BACK ☐

b. TYPE OF WELL

OIL
WELL ☒GAS
WELL ☐OTHER ☐SINGLE
ZONE ☒MULTIPLE
ZONE ☐

2. NAME OF OPERATOR

Mobil Producing TX. & N.M. Inc.

3. ADDRESS OF OPERATOR

Nine Greenway Plaza, Suite 2700, Houston, TX 77046

4. LOCATION OF WELL (Report location clearly and in accordance with any State requirements.)*

At surface

1810' FNL & 1650' FEL, Sec. 27, T24N, R3W

At proposed prod. zone

Same as surface

14. DISTANCE IN MILES AND DIRECTION FROM NEAREST TOWN OR POST OFFICE*

50 miles Southeast from Farmington

15. DISTANCE FROM PROPOSED* 6650' ± FSWLL

LOCATION TO NEAREST
PROPERTY OR LEASE LINE, FT. (990' ±)

(Also to nearest drig. unit line, if any)

16. NO. OF ACRES IN LEASE

26,365.43' 2560

17. NO. OF ACRES ASSIGNED
TO THIS WELL

160

18. DISTANCE FROM PROPOSED LOCATION*
TO NEAREST WELL, DRILLING, COMPLETED,
OR APPLIED FOR, ON THIS LEASE, FT.

2441' East

to Well #20

19. PROPOSED DEPTH

8,000'

20. ROTARY OR CABLE TOOLS

Rotary

21. ELEVATIONS (Show whether DF, RT, GR, etc.)

7117' - GR

22. APPROX. DATE WORK WILL START*

April 15, 1981

23.

PROPOSED CASING AND CEMENTING PROGRAM

This

SIZE OF HOLE	SIZE OF CASING	WEIGHT PER FOOT	SETTING DEPTH	APPROX. QUANTITY CEMENT REQUIRED
17-1/2"	12-3/4" *	45.51# H-40	0 - 400'	1. Circulate to surface w/300 sx.
11"	8-5/8" *	24# S-80	0 - 3100'	2. Circulate to surface w/900 sx.
		28# S-80	3100 - 3900'	
7-7/8"	5-1/2" *	15.5# K-55	0 - 7000'	3. Circulate to Approx. 3800'
		17# K-55	7000 - 7700'	w/950 sx. in two stages

* All casing will be new.

CEMENTING PROGRAM

1. Class B with 2% CaCl₂. 2. Lite weight & Class B 3. Lite Weight & Class B

MUD PROGRAM

Depth	Type of Mud	Weight	Viscosity	ph	Water Loss
0 - 400'	Spud Mud	9.0-9.2	35-45	9+	NC
400-TD	Fresh Water Gel	8.8	35-40	9+	10 cc's

BLOWOUT PREVENTER PROGRAM

See Attachment

LOGGING PROGRAM: Type

IES
FDL/CNL

Depth

Surf. to TD
Surf. to TD

IN ABOVE SPACE DESCRIBE PROPOSED PROGRAM: If proposal is to deepen or plug back, give data on present productive zone and proposed new productive zone. If proposal is to drill or deepen directionally, give pertinent data on subsurface locations and measured and true vertical depths. Give blowout preventer program, if any.

24.

SIGNED A.D. Bond A.D. BondRegulatory Engineering
Coordinator II

DATE 3-3-81

(This space for Federal or State office use)

PERMIT NO. _____

APPROVAL DATE _____

APPROVED BY _____
CONDITIONS OF APPROVAL, IF ANY: _____

TITLE _____

APPROVED
DATE AMENDEDAPR 13 1981
James F. Sims
JAMES F. SIMS
DISTRICT ENGINEER

*See Instructions On Reverse Side

**NEW MEXICO OIL CONSERVATION COMMISSION
WELL LOCATION AND ACREAGE DEDICATION PLAT**

Form O-102
Supersedes C-128
Effective 1-1-65

All distances must be from the outer boundaries of the Section

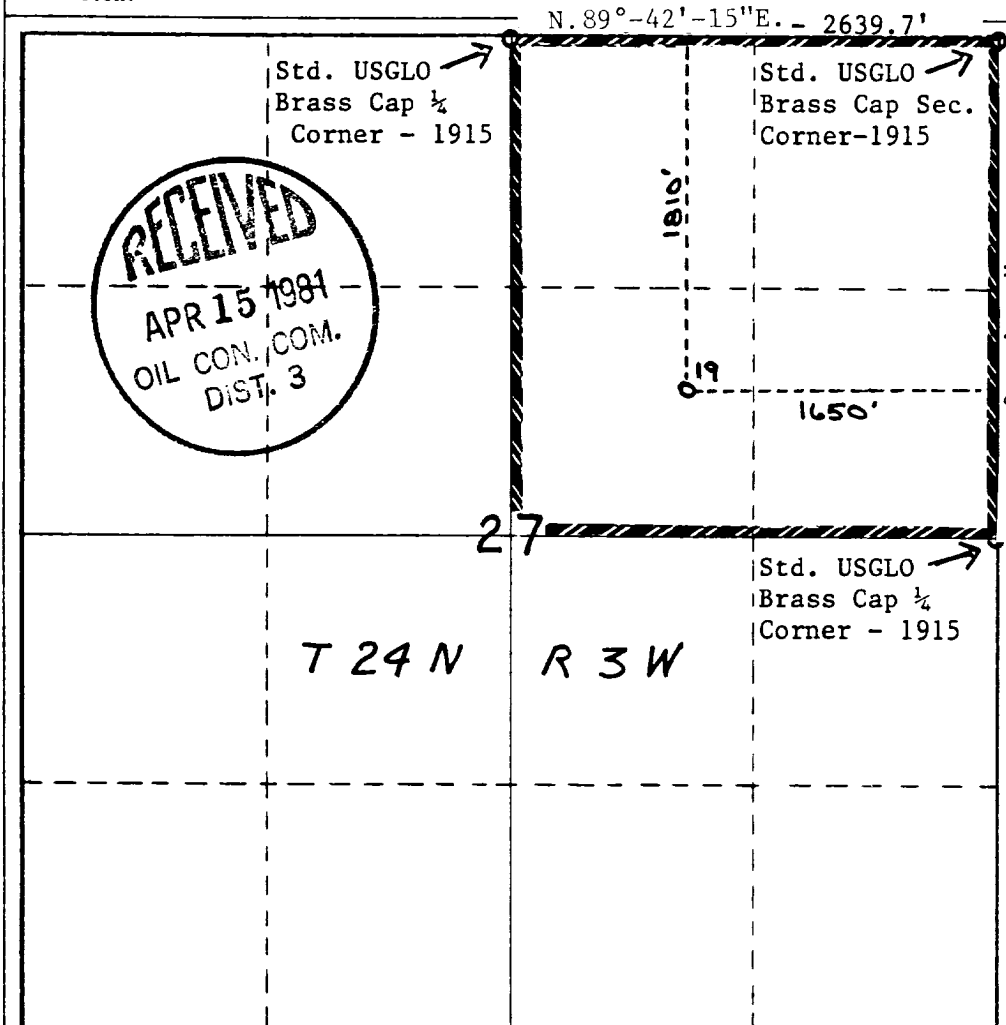
Operator Mobil Producing TX. & N.M. Inc.			Lease Lindrith B Unit		Well No. 19
Unit Letter G	Section 27	Township 24N	Range 3W	County Rio Arriba	
Actual Footage Location of Well: 1810 feet from the North line and 1650 feet from the East line					
Ground Level Elev. 7117'	Producing Formation Dakota	Pool Chacon-Dakota Associated		Dedicated Acreage: 160 Acres	

1. Outline the acreage dedicated to the subject well by colored pencil or hatchure marks on the plat below.
2. If more than one lease is dedicated to the well, outline each and identify the ownership thereof (both as to working interest and royalty).
3. If more than one lease of different ownership is dedicated to the well, have the interests of all owners been consolidated by communitization, unitization, force-pooling, etc?

☒ Yes ☐ No If answer is "yes," type of consolidation Unitization

If answer is "no," list the owners and tract descriptions which have actually been consolidated. (Use reverse side of this form if necessary.) _____

No allowable will be assigned to the well until all interests have been consolidated (by communitization, unitization, forced-pooling, or otherwise) or until a non-standard unit, eliminating such interests, has been approved by the Commission.



CERTIFICATION

I hereby certify that the information contained herein is true and complete to the best of my knowledge and belief.

A.D. Bond
Name
A.D. Bond
Position **Regulatory Engineering Coordinator II**
Company **Mobil Producing TX. & N.M. Inc.**
Date **March 3, 1981**

I hereby certify that the well location shown on this plat was plotted from field notes of actual survey made by me or under my supervision, and that the same is true and correct to the best of my knowledge and belief.

H.A. Carson, Jr.
H.A. Carson, Jr.
Date Surveyed **February 11, 1981**

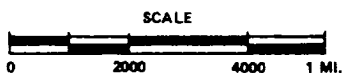
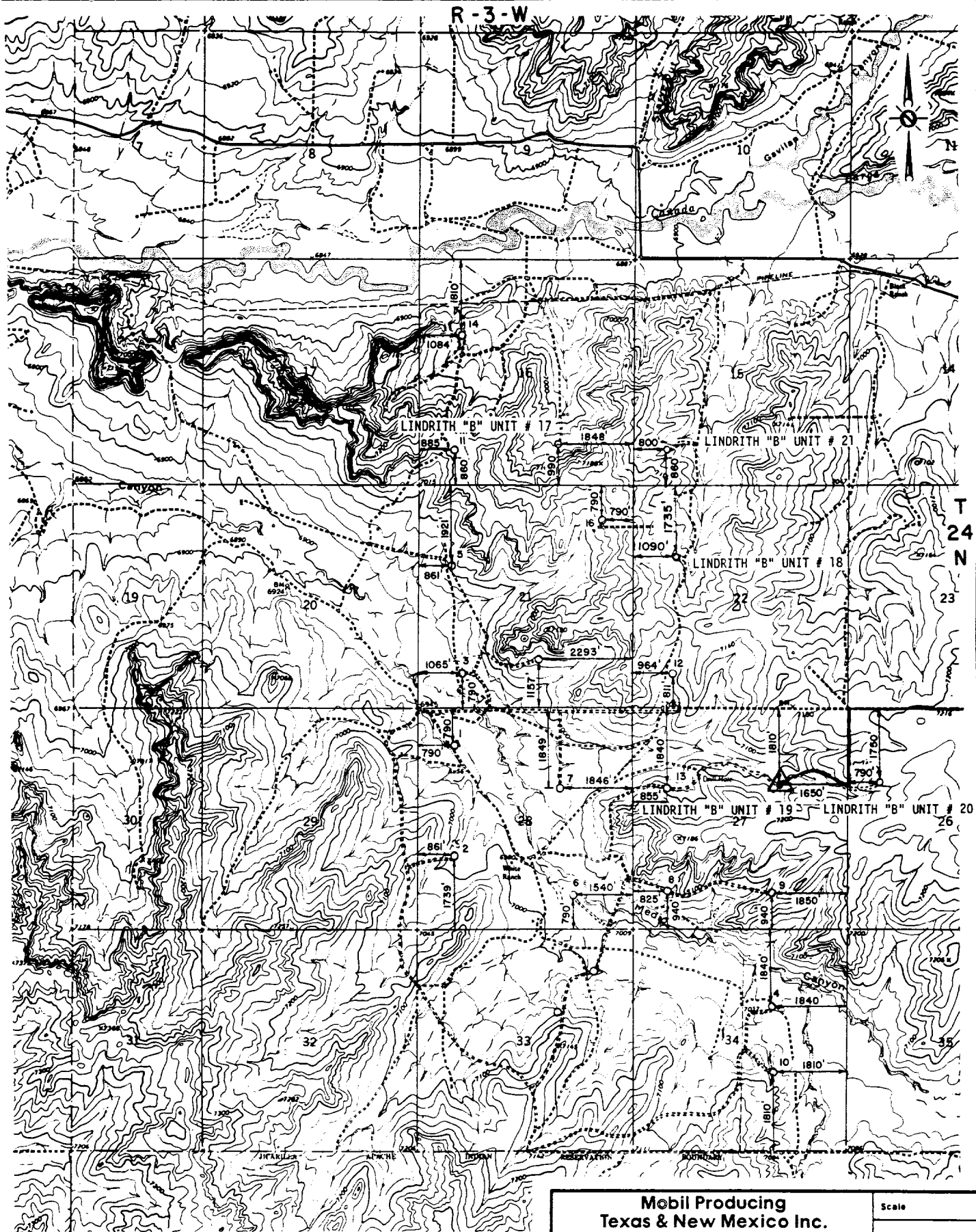
Registered Professional Engineer
and/or Land Surveyor

H.A. Carson, Jr.

Certificate No.

5063

0 330 660 990 1320 1650 1980 2310 2640 2000 1500 1000 500 0



**Mobil Producing
Texas & New Mexico Inc.**
Houston, Texas

LINDRITH "B" UNIT
VICINITY PLAT
RIO ARRIBA CO., NEW MEXICO
MAP "B"

Scale

Date 2-17-81
Drawn J.W.J.
Checked
Approved
Revised