

UNITED STATES
DEPARTMENT OF THE INTERIOR
GEOLOGICAL SURVEY30-039-22733
5. LEASE DESIGNATION AND SERIAL NO.

APPLICATION FOR PERMIT TO DRILL, DEEPEN, OR PLUG BACK

1a. TYPE OF WORK

DRILL ☒DEEPEN ☐PLUG BACK ☐

b. TYPE OF WELL

OIL
WELL ☐GAS
WELL ☒

OTHER

SINGLE
ZONE ☐MULTIPLE
ZONE ☒

2. NAME OF OPERATOR

GETTY OIL COMPANY

3. ADDRESS OF OPERATOR

P. O. BOX 3360 Casper, WY 82602

4. LOCATION OF WELL (Report location clearly and in accordance with any State requirements.)

At surface

(20-25N-3W)

800' FNL 1820' FWL

At proposed prod. zone

Same

14. DISTANCE IN MILES AND DIRECTION FROM NEAREST TOWN OR POST OFFICE*

120 miles southeast of Aztec

15. DISTANCE FROM PROPOSED*

LOCATION TO NEAREST

PROPERTY OR LEASE LINE, FT.

(Also to nearest drlg. unit line, if any)

18. DISTANCE FROM PROPOSED LOCATION*

TO NEAREST WELL, DRILLING, COMPLETED,
OR APPLIED FOR, ON THIS LEASE, FT.

16. NO. OF ACRES IN LEASE

1275.08

19. PROPOSED DEPTH

8220'

17. NO. OF ACRES ASSIGNED

TO THIS WELL

320 / 40

20. ROTARY OR CABLE TOOLS

Rotary

21. ELEVATIONS (Show whether DF, RT, GR, etc.)

7222' GR

22. APPROX. DATE WORK WILL START*

April 1, 1981

23. PROPOSED CASING AND CEMENTING PROGRAM

(All New)

SIZE OF HOLE	SIZE OF CASING	WEIGHT PER FOOT	SETTING DEPTH	QUANTITY OF CEMENT
12 1/4	8 5/8	24#	320	200 SX
7 7/8	5 1/2	15, 14 & 17#	8220	1200 SX *

* Cement volume may change due to Caliper

Ten Point Resource Protection Plan attached



IN ABOVE SPACE DESCRIBE PROPOSED PROGRAM: If proposal is to deepen or plug back, give data on present productive zone and proposed new productive zone. If proposal is to drill or deepen directionally, give pertinent data on subsurface locations and measured and true vertical depths. Give blowout preventer program, if any.

24.

SIGNED

H. E. Ash

TITLE Area Supt.

DATE February 6, 1981

(This space for Federal or State office use)

PERMIT NO.

APPROVAL DATE

APPROVED BY

TITLE

CONDITIONS OF APPROVAL, IF ANY:

APPROVED
AS AMENDED

APR 22 1981

JAMES F. SIMS

DISTRICT ENGINEER

*See Instructions On Reverse Side

WMOG

All distances must be from the outer boundaries of the Section.

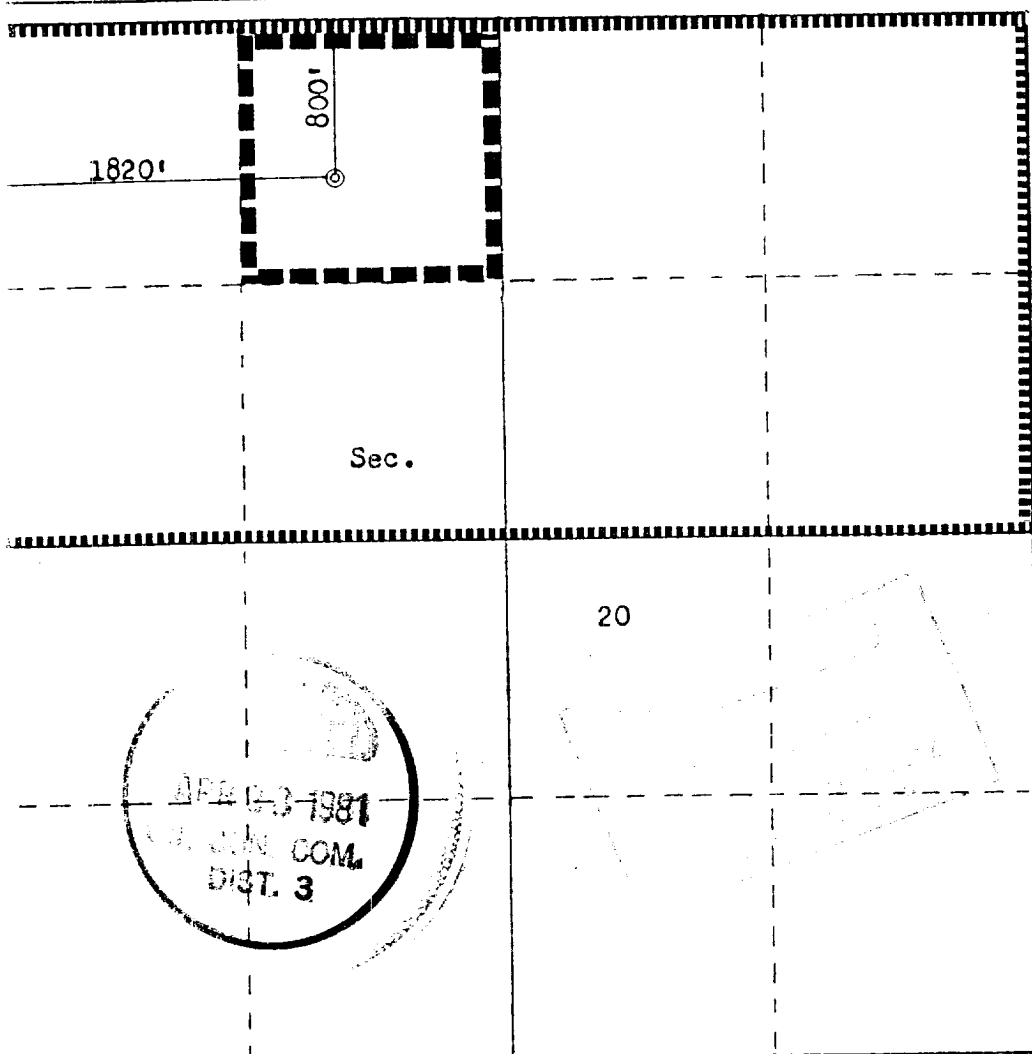
Operator GETTY OIL COMPANY		Lease LYDIA RENTZ		Well No. 7	
Site Letter C	Section 20	Township 25N	Range 3W	County Rio Arriba	
Actual Footage Location of Well:					
800 feet from the North line and		1820 feet from the West line			
Ground Level Elev. 7222	Producing Mesaverde	Pool Gallup - Dakota	Dedicated Acreage: 320 40 Acres		
		Blanco Ojito			

1. Outline the acreage dedicated to the subject well by colored pencil or hatchure marks on the plat below.
2. If more than one lease is dedicated to the well, outline each and identify the ownership thereof (both as to working interest and royalty).
3. If more than one lease of different ownership is dedicated to the well, have the interests of all owners been consolidated by communitization, unitization, force-pooling, etc?

☐ Yes ☐ No If answer is "yes," type of consolidation _____

If answer is "no," list the owners and tract descriptions which have actually been consolidated. (Use reverse side of this form if necessary.) _____

No allowable will be assigned to the well until all interests have been consolidated (by communitization, unitization, forced-pooling, or otherwise) or until a non-standard unit, eliminating such interests, has been approved by the Commission.



Scale: 1"=1000'

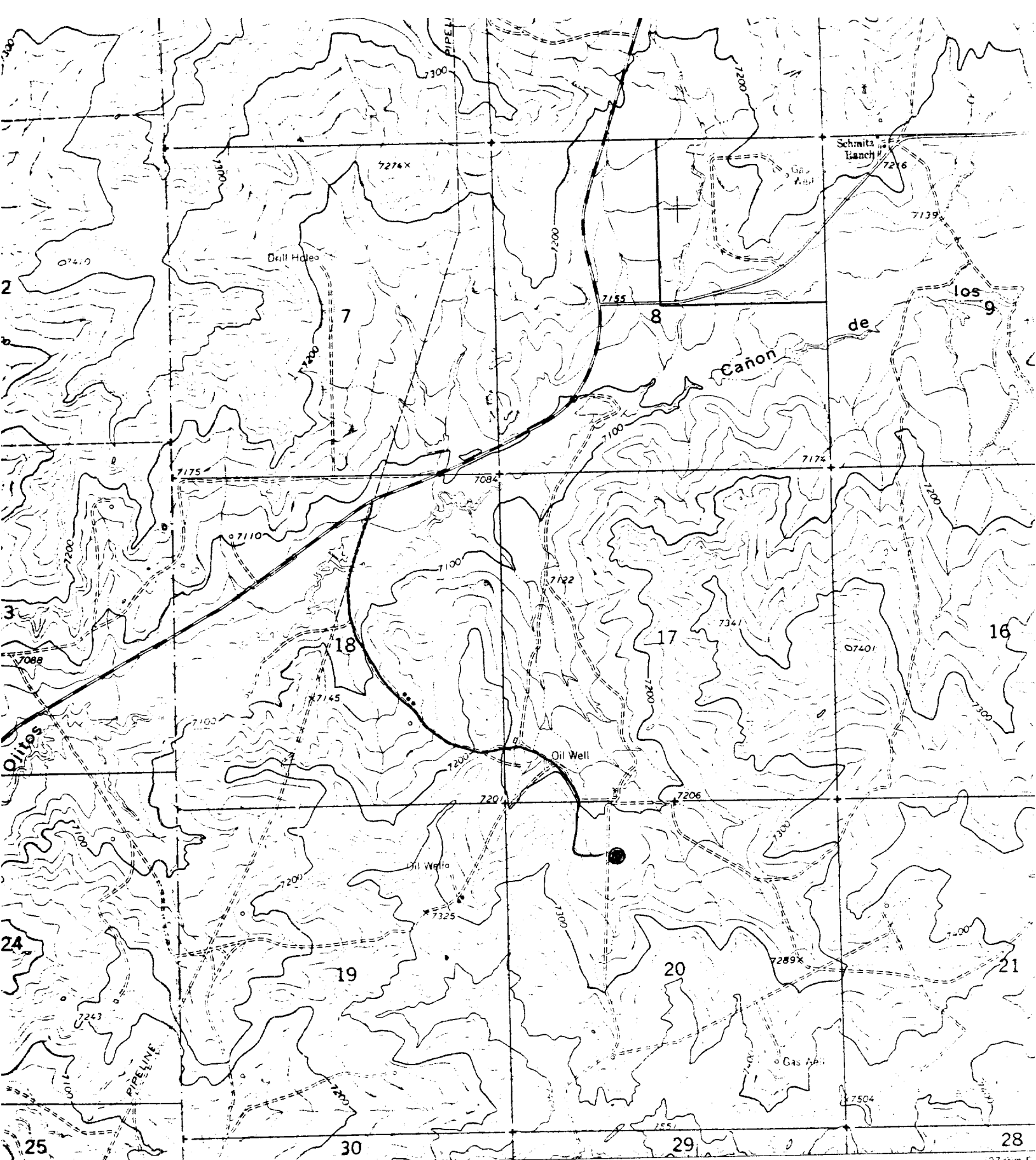
CERTIFICATION

I hereby certify that the information contained herein is true and complete to the best of my knowledge and belief.

Name
W. Kendrick
Position
Agent
Company
Getty Oil Company
Date
April 6, 1981

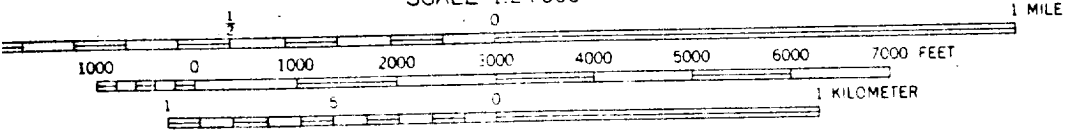
I hereby certify that the well location shown on this plat was plotted from field notes of actual surveys made by me or under my supervision, and that the same is true and correct to the best of my knowledge and belief.

Date Surveyed
February 27, 1981
Registered Professional Engineer and Land Surveyor
Fred B. Kerr Jr.
Certificate No. 3950



R. 4 W. R. 3 W. BILLY RICE CANYON
455' SW

SCALE 1:24000



CONTOUR INTERVAL 20 FEET
DATUM IS MEAN SEA LEVEL

Getty Oil Company
Lydia Rentz #7
Sec. 20 T25N, R3W