

submitted in lieu of Form 3160-5

RECEIVED
BLM

UNITED STATES
DEPARTMENT OF THE INTERIOR
BUREAU OF LAND MANAGEMENT
Sundry Notices and Reports on Wells

02 SEP 16 PM 1:47

1. Type of Well
Oil
Chase oil

2. Name of Operator
Golden Oil Company

3. Address & Phone No. of Operator
550 Post Oak Blvd, Suite 550, Houston, TX 77027

Location of Well, Footage, Sec., T, R, M
1840' FSL and 800' FEL, Sec. 34, T-24-N, R-4-W,

5. Lease Number
Jicarilla 70

6. If Indian, All. or
Tribe Name
Jicarilla Apache

7. Unit Agreement Name

8. Well Name & Number
Jicarilla 70 #12

9. API Well No.
30-039-22819

10. Field and Pool
S. Lindrith Gallup-Dakota

11. County & State
Rio Arriba County, NM

12. CHECK APPROPRIATE BOX TO INDICATE NATURE OF NOTICE, REPORT, OTHER DATA

Type of Submission	Type of Action
<input checked="" type="checkbox"/> Notice of Intent	<input checked="" type="checkbox"/> Abandonment
<input type="checkbox"/> Subsequent Report	<input type="checkbox"/> Recompletion
<input type="checkbox"/> Final Abandonment	<input type="checkbox"/> Plugging Back
	<input type="checkbox"/> Casing Repair
	<input type="checkbox"/> Altering Casing
	<input type="checkbox"/> Other -
	<input type="checkbox"/> Change of Plans
	<input type="checkbox"/> New Construction
	<input type="checkbox"/> Non-Routine Fracturing
	<input type="checkbox"/> Water Shut off
	<input type="checkbox"/> Conversion to Injection

13. Describe Proposed or Completed Operations

Golden Oil Company plans to plug and abandon this well per the attached procedure.

14. I hereby certify that the foregoing is true and correct.

Signed Therold D. Oldham Title Director of Operations Date 9/10/02
Ted Oldham

(This space for Federal or State Office use)
APPROVED BY /s/ Brian W. Davis Title Lands and Mineral Resources Date OCT 4 2002
CONDITION OF APPROVAL, if any:

PLUG AND ABANDONMENT PROCEDURE 9/6/02

**Jicarilla Tribal Contract 70 #12
South Lindrith Gallup / Dakota
1980' FSL & 800' FEL, Section 34, T24N, R4W
Rio Arriba County, NM**

Note: All cement volumes use 100% excess outside pipe and 50' excess inside pipe. The stabilizing wellbore fluid will be 8.3 ppg, sufficient to balance all exposed formation pressures. All cement will be ASTM Type II, mixed at 15.6 ppg with a 1.18 cf/sx yield.

1. Install and/or test rig anchors. Prepare blow pit. Comply with all NMOCD, BLM and Golden safety rules and regulations. MOL and RU daylight pulling unit. Blow well down; kill with water if necessary. ND wellhead and NU BOP and stripping head; test BOP
2. Prepare a 2-3/8" workstring. Round-trip 4-1/2" gauge ring or casing scraper to 7015'.
3. **Plug #1 (Dakota perforations and top, 7015' – 6915')**: TIH and set a 4-1/2" cement retainer at 7015'. Pressure test tubing to 1000#. Pump 40 bbls water down tubing. Mix 11 sxs cement and spot a balanced plug inside casing above retainer to cover the Dakota perforations and top. TOH.
4. **Plug #2 (Gallup perforations and top, 5851' - 5751')**: TIH and set a 4-1/2" cement retainer at 5851'. Load casing with water and circulate the well clean. Pressure test casing to 500#. If casing does not test, then spot or tag subsequent plugs as necessary. Mix 11 sxs cement and spot a balanced plug inside casing above retainer to isolate Gallup perforations. PUH to 4546'.
5. **Plug #3 (Cliffhouse top, 4546' - 4446')**: Mix 11 sxs cement and spot a balanced plug inside casing to cover the Cliffhouse top. PUH to 2960'.
6. **Plug #4 (Pictured Cliffs, Fruitland, Kirtland and Ojo Alamo tops, 2960' – 2425')**: Mix 43 sxs cement and spot a balanced plug inside casing to cover through the Ojo Alamo top. PUH to 1220'.
7. **Plug #5 (Nacimiento top, 1220' – 1120')**: Mix 11 sxs cement and spot a balanced plug inside casing to cover the Nacimiento top. TOH and LD tubing.
8. **Plug #6 (8-5/8" Surface casing, 272' - surface)**: Perforate 3 squeeze holes at 272'. Establish circulation out bradenhead. Mix and pump approximately 90 sxs cement from 272' to surface, circulate good cement out bradenhead valve. SI well and WOC.
9. ND BOP and cut off casing below surface. Install P&A marker with cement to comply with regulations. RD, move off location, cut off anchors and restore location.

Jicarilla 70 #12

Current

South Lindrith Gallup/Dakota

API #

SE, Section 34, T-24-N, R-4-W, Rio Arriba County, NM

Today's Date: 9/6/02

Spud: 11/12/81

Completed: 1/7/82

Elevation: 7088' GL
7099' KB

9-5/8" hole

8-5/8" 23# Casing set @ 222'
Cmt w/150 sxs (Circulated to Surface)

Cement circulated to 600' per Sundry

Nacimiento @ 1170'

Sundry Intent to P&A in 1993

Ojo Alamo @ 2475'

Kirtland @ 2650'

Fruitland @ 2720'

Pictured Cliffs @ 2930'

DV Tool @ 6049'
Cmt with 1150 sxs (1890 cf)

Cliffhouse @ 4496'

TOC @ DV Tool (Calc, 75%)

Gallup @ 6114'

Gallup Perforations:
5901' - 6322'

Dakota @ 7147'

Dakota Perforations:
7065' - 7212, 7300' - 7351'

7-7/8" hole

PBTD 7408'

TD 7450'

4-1/2" 11.6# Casing set @ 7450'
Cement with 750 sxs (946 cf)
TOC at DV Tool

Jicarilla 70 #12

Proposed P&A

South Lindrith Gallup/Dakota

API #

SE, Section 34, T-24-N, R-4-W, Rio Arriba County, NM

Today's Date: 9/6/02

Spud: 11/12/81

Completed: 1/7/82

Elevation: 7088' GL
7099' KB

9-5/8" hole

Nacimiento @ 1170'

Ojo Alamo @ 2475'

Kirtland @ 2650'

Fruitland @ 2720'

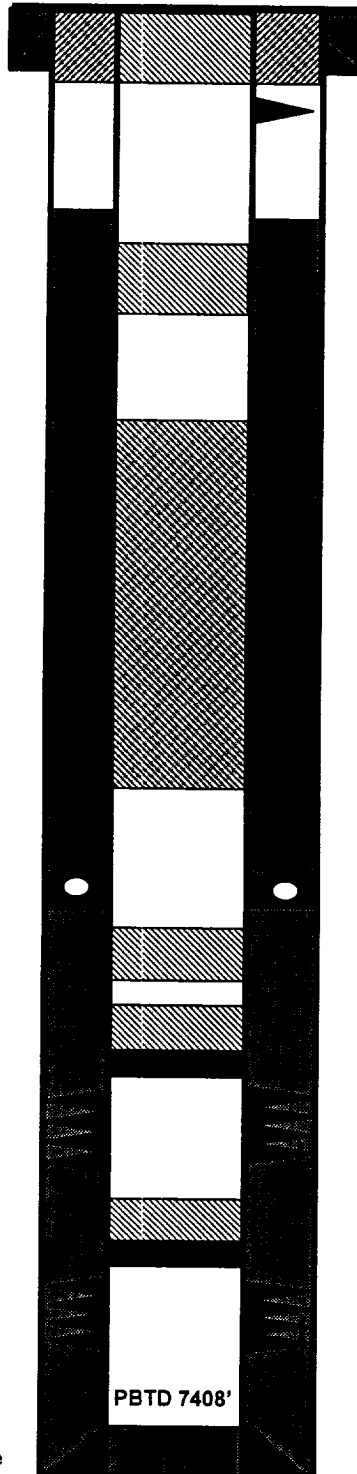
Pictured Cliffs @ 2930'

Cliffhouse @ 4496'

Gallup @ 6114'

Dakota @ 7147'

7-7/8" hole



8-5/8" 23# Casing set @ 222'
Cmt w/150 sxs (Circulated to Surface)

Perforate @ 272'

Plug #6: 272' - Surface
Cmt with 90 sxs

Cement circulated to 600' per Sundry

Plug #5: 1220' - 1120'
Cmt with 11 sxs

Plug #4: 2960' - 2425'
Cmt with 43 sxs

DV Tool @ 6049'
Cmt with 1150 sxs (1890 cf)

TOC @ DV Tool (Calc, 75%) **Plug #3: 4546' - 4446'**
Cmt with 11 sxs

Set CR @ 5851'

Plug #2: 5851' - 5751'
Cmt with 11 sxs

Gallup Perforations:
5901' - 6322'

Plug #1: 7015' - 6915'
Cmt with 11 sxs

Set CR @ 7015'

Dakota Perforations:
7065' - 7212, 7300' - 7351'

4-1/2" 11.6# Casing set @ 7450'
Cement with 750 sxs (946 cf)
TOC at DV Tool

BLM CONDITIONS OF APPROVAL

The following surface rehabilitation Conditions of Approval must be complied with as applicable, before this well can be approved for final abandonment (see 43 CFR 3162.3-4). Surface rehabilitation work shall be completed within one year of the actual plugging date. Notification for completion of this work should be submitted with a Sundry Notice. Questions? Call Pat Hester at (505) 761-8786.

1. All fences, production equipment, purchaser's equipment, concrete slabs, deadman (anchors), flowlines, risers, debris and trash must be removed from the location. Non-retrieved flowlines and pipelines will be abandoned in accordance with State Rule 714. Information supporting the non-retrieval will be included in the subsequent report or final abandonment Sundry Notice.

2. Production pits will be closed according to the Unlined Surface Impoundment Closure Guidelines, as approved in the Environmental Assessment of December 1993. Any oil stained soils can be remediated on-site according to these guidelines or disposed of in an approved facility.

3. The well pad will be shaped to the natural terrain and left as rough as possible. All compacted areas and areas devoid of vegetation shall be ripped/disked to a minimum of 12" in depth before reseeding.

4. Access roads will be shaped to conform to the natural terrain and left as rough as possible to deter vehicle travel. Access will be ripped to a minimum of 12" in depth, water barred and reseeded. All erosion problems created by the development must be corrected prior to acceptance of release. Water bars should be spaced as shown below along the fall line of the slope:

% Slope	Spacing Interval
Less than 20%	200'
2 to 5 %	150'
6 to 9 %	100'
10 to 15 %	50'
Greater than 15%	30'

5. All disturbed areas will be seeded with the prescribed certified seed mix (reseeding may be required). Seed mix must be certified weed free to avoid the introduction of noxious weeds. Refer to the original APD for seed mix.

6. Notify Surface Managing Agency seven (7) days prior to seeding so that they may be present to witness.

7. The period of liability under the bond of record will not be terminated until the well is inspected and the surface rehabilitation approved.

Other Surface Managing Agencies (SMA's) may vary slightly in their restoration requirements. It is your responsibility, as the operator, to obtain surface restoration requirements from other SMA's. We need to be provided with a copy of these requirements. Any problems concerning stipulations received from other SMA's should be brought to us. On private land, a letter from the fee owner stating that the surface restoration is satisfactory will be provided to the office. Questions? Call Pat Hester at (505) 761-8786.

IN REPLY REFER TO
3162.3-1 (017)

UNITED STATES DEPARTMENT OF THE INTERIOR

BUREAU OF LAND MANAGEMENT
Albuquerque Field Office
435 Montano N.E.
Albuquerque, New Mexico 87107

Company Golden Oil Company

Well No. Jicarilla 70 No. 12

Location 1840' FSL & 800' FEL Sec. 34, T24N, R4W, NMPM

Lease No. Jicarilla Contract 70

Government Contacts:

Bureau of Land Management, Albuquerque Field Office Office 505.761.8700
Manager: Steve Anderson, Assistant Field Manager 505.761.8982
Petroleum Engineer: Brian W. Davis 505.761.8756, Home 505.323-8698,
Pager 505.969.0146, Cell 505.249.7922,
Petroleum Engineering Technician: **Bryce Hammon, Office 505.759.1823, x-31, Cell 505.320.9741**
BLM Geology / Environmental Contact: Patricia M. Hester 505.761.8786

GENERAL REQUIREMENTS
FOR
OIL AND GAS OPERATIONS FEDERAL & INDIAN LEASES

1. Plugging operations authorized are subject to the "General Requirements for Permanent Abandonment of Wells on Federal and Indian Leases."
2. For wells on Indian leases, Bryce Hammond with the Jicarilla Nation Tribal Oil and Gas Office is to be notified at least 24 hours (48 hours if possible) before the plugging operations commence. His phone number is (505) 759-1823, x-31 office, (505) 320-9741 cell. Office hours are 7:45 a.m. to 4:30 p.m.
3. Blowout prevention equipment is required.
4. The following modifications to your plugging program are to be made :

N/A