

UNITED STATES
DEPARTMENT OF THE INTERIOR
GEOLOGICAL SURVEY

SUNDRY NOTICES AND REPORTS ON WELLS

(Do not use this form for proposals to drill or to deepen or plug back to a different reservoir. Use Form 9-331-C for such proposals.)

1. oil well ☐ gas well ☒ other

2. NAME OF OPERATOR
DUGAN PRODUCTION CORP.

3. ADDRESS OF OPERATOR
P O Box 208, Farmington, NM 87401

4. LOCATION OF WELL (REPORT LOCATION CLEARLY. See space 17 below.)
AT SURFACE: 1110' FSL - 850' FWL
AT TOP PROD. INTERVAL:
AT TOTAL DEPTH:

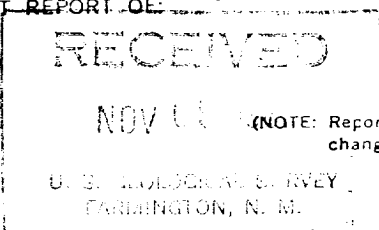
16. CHECK APPROPRIATE BOX TO INDICATE NATURE OF NOTICE, REPORT, OR OTHER DATA

REQUEST FOR APPROVAL TO:

TEST WATER SHUT-OFF ☐
FRACTURE TREAT ☐
SHOOT OR ACIDIZE ☐
REPAIR WELL ☐
PULL OR ALTER CASING ☐
MULTIPLE COMPLETE ☐
CHANGE ZONES ☐
ABANDON* ☐
(other)

SUBSEQUENT REPORT OF:

☐
☐
☐
☐
☐
☐
☐
☒ 4½' csg. & cement.



5. LEASE
NM 28698

6. IF INDIAN, ALLOTTEE OR TRIBE NAME

7. UNIT AGREEMENT NAME

8. FARM OR LEASE NAME
Emerald

9. WELL NO.
1

10. FIELD OR WILDCAT NAME
Gavilan P.C., S Blanco Ext.

11. SEC., T., R., M., OR BLK. AND SURVEY OR AREA

Sec 17 T24N R1W

12. COUNTY OR PARISH
Rio Arriba

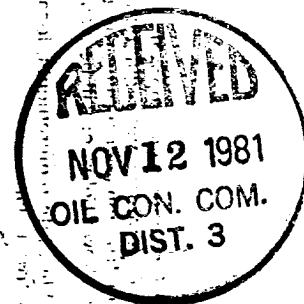
13. STATE
NM

14. API NO.

15. ELEVATIONS (SHOW DF, KDB, AND WD)
7515' GL

17. DESCRIBE PROPOSED OR COMPLETED OPERATIONS (Clearly state all pertinent details, and give pertinent dates, including estimated date of starting any proposed work. If well is directionally drilled, give subsurface locations and measured and true vertical depths for all markers and zones pertinent to this work.)*

See reverse for report of 4½" csg. and cement.



Subsurface Safety Valve: Manu. and Type

Set @ Ft.

18. I hereby certify that the foregoing is true and correct

SIGNED Thomas A. Dugan TITLE Petroleum Engineer DATE 11-5-81

(This space for Federal or State office use)

APPROVED BY
CONDITIONS OF APPROVAL, IF ANY:

TITLE DATE

NMOCC

ACCEPTED FOR RECORD

NOV 10 1981

FARMINGTON DISTRICT

BY

11-5-81 Laid down drill pipe. Rigged up and ran 23 jts. 4½" OD, 11.6#, 8 Rd, LT&C and 75 jts. 4½" OD, 10.5#, 8 Rd, ST&C csg. T.E. 3558.59' set at 3539' GL.

Cemented w/ 50 sx 65-35 plus 12% gel and ¼# flocele per sk followed by 75 sx class "B" w/ 12½# gilsonite per sk and ¼# flocele per sk. Total cement slurry 237 cu.ft. Preflushed hole w/ 1000 gals floc check and 10 bbls salt water. Lost circ. while mixing cement. Regained circulation when floc check contacted formation. Had full returns for balance of job. Maximum cementing pressure 600 psi. Bumped plug with 2000 psi. Float failed to hold. Left pressure on csg. for 1 hr. Released pressure, held OK. Set csg. slips and cut off csg. Released rig at 12:00 midnight 11-4-81. Calculated cement top 2000'.