

UNITED STATES
DEPARTMENT OF THE INTERIOR
GEOLOGICAL SURVEY

30-039-22840

APPLICATION FOR PERMIT TO DRILL, DEEPEN, OR PLUG BACK

1a. TYPE OF WORK

DRILL ☒

DEEPEN ☐

PLUG BACK ☐

b. TYPE OF WELL

OIL
WELL ☐

GAS
WELL ☒

OTHER

SINGLE
ZONE ☒

MULTIPLE
ZONE ☐

2. NAME OF OPERATOR

Getty Oil Company

3. ADDRESS OF OPERATOR

Box 3360, Casper, Wyoming 82602

4. LOCATION OF WELL (Report location clearly and in accordance with any State requirements.)

At surface

1850' FSL, 1840' FWL Sec. 22, T25N, R5W

At proposed prod. zone

same

14. DISTANCE IN MILES AND DIRECTION FROM NEAREST TOWN OR POST OFFICE

15. DISTANCE FROM PROPOSED*

LOCATION TO NEAREST
PROPERTY OR LEASE LINE, FT.
(Also to nearest drlg. unit line, if any)

18. DISTANCE FROM PROPOSED LOCATION*

TO NEAREST WELL, DRILLING, COMPLETED,
OR APPLIED FOR, ON THIS LEASE, FT.

21. ELEVATIONS (Show whether DF, RT, GR, etc.)

6692 G

23. PROPOSED CASING AND CEMENTING PROGRAM

| SIZE OF HOLE | SIZE OF CASING | WEIGHT PER FOOT | SETTING DEPTH | QUANTITY OF CEMENT |
|--------------|----------------|-----------------|---------------|--------------------|
| 12 1/4 | 8 5/8 | new 24.0 | 300 | 200 Surface |
| 7 7/8 | 5 1/2 | new 14.0 | 5400 |) *1325 Surface |
| 7 7/8 | 5 1/2 | new 15.5 | 7350 |) |

* Cement volume will depend on volume calculated from hole caliper.

Thirteen Point Surface Use Program attached.



Gas is dedicated.

IN ABOVE SPACE DESCRIBE PROPOSED PROGRAM: If proposal is to deepen or plug back, give data on present productive zone and proposed new productive zone. If proposal is to drill or deepen directionally, give pertinent data on subsurface locations and measured and true vertical depths. Give blowout preventer program, if any.

24.

SIGNED

DeW Bowers

TITLE

Area Supt.

DATE

9/17/81

(This space for Federal or State office use)

PERMIT NO.

APPROVAL DATE

APPROVED BY

John D. Kellan

TITLE

Acting Dist. Super.

DATE

CONDITIONS OF APPROVAL, IF ANY:

OK

OIL CONSERVATION DIVISION

P. O. BOX 2088

STATE OF NEW MEXICO
ENERGY AND MINERALS DEPARTMENT

SANTA FE, NEW MEXICO 87501

Form C-107
Revised 10-1

All distances must be from the outer boundaries of the Section.

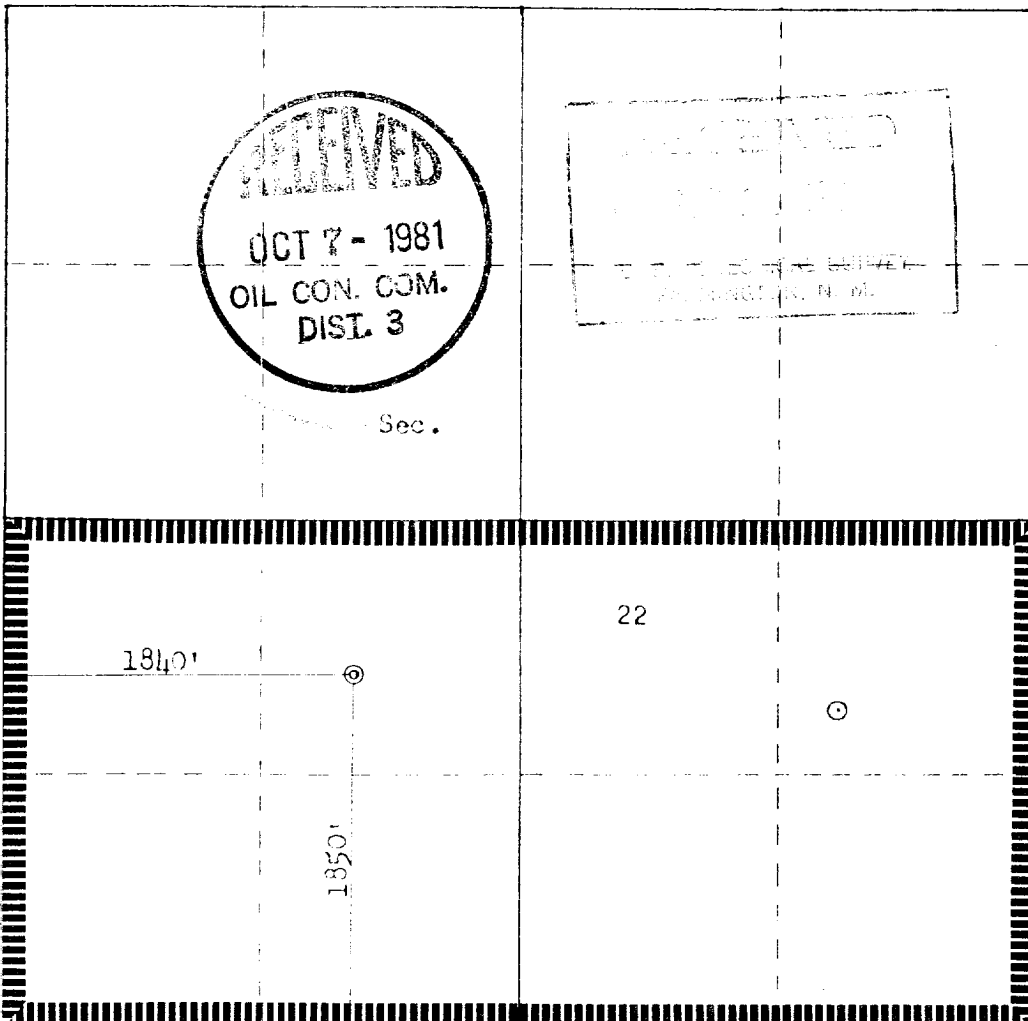
| | | | | | | | | |
|--|----------------------|--------------------------------------|-----------------------------|-----------------------------|--|-----------------------|--|--|
| Operator GETTY OIL COMPANY | | | Lease JICARILLA C | | | Well No. 1E | | |
| Unit Letter K | Section 22 | Township 25N | Range 5W | County Rio Arriba | | | | |
| Actual Footage Location of Well: 1850 feet from the South line and 1840 feet from the West line | | | | | | | | |
| Ground Level Elev. 6692 | | Producing Formation Dakota | | Pool Basin Dakota | | | Dedicated Acreage: S/320 Acres | |

1. Outline the acreage dedicated to the subject well by colored pencil or hachure marks on the plat below.
2. If more than one lease is dedicated to the well, outline each and identify the ownership thereof (both as to working interest and royalty).
3. If more than one lease of different ownership is dedicated to the well, have the interests of all owners been consolidated by communitization, unitization, force-pooling, etc?

☐ Yes ☐ No If answer is "yes," type of consolidation _____

If answer is "no," list the owners and tract descriptions which have actually been consolidated. (Use reverse side of this form if necessary.) _____

No allowable will be assigned to the well until all interests have been consolidated (by communitization, unitization, forced-pooling, or otherwise) or until a non-standard unit, eliminating such interests, has been approved by the Commission.



CERTIFICATION

I hereby certify that the information contained herein is true and complete to the best of my knowledge and belief.

Name *Art Kendrick*
Position Agent
Company Getty Oil Company
Date September 3, 1981

I hereby certify that the well location shown on this plat was plotted from field notes of actual surveys made by me or under my supervision, and that the same is true and correct to the best of my knowledge and belief.

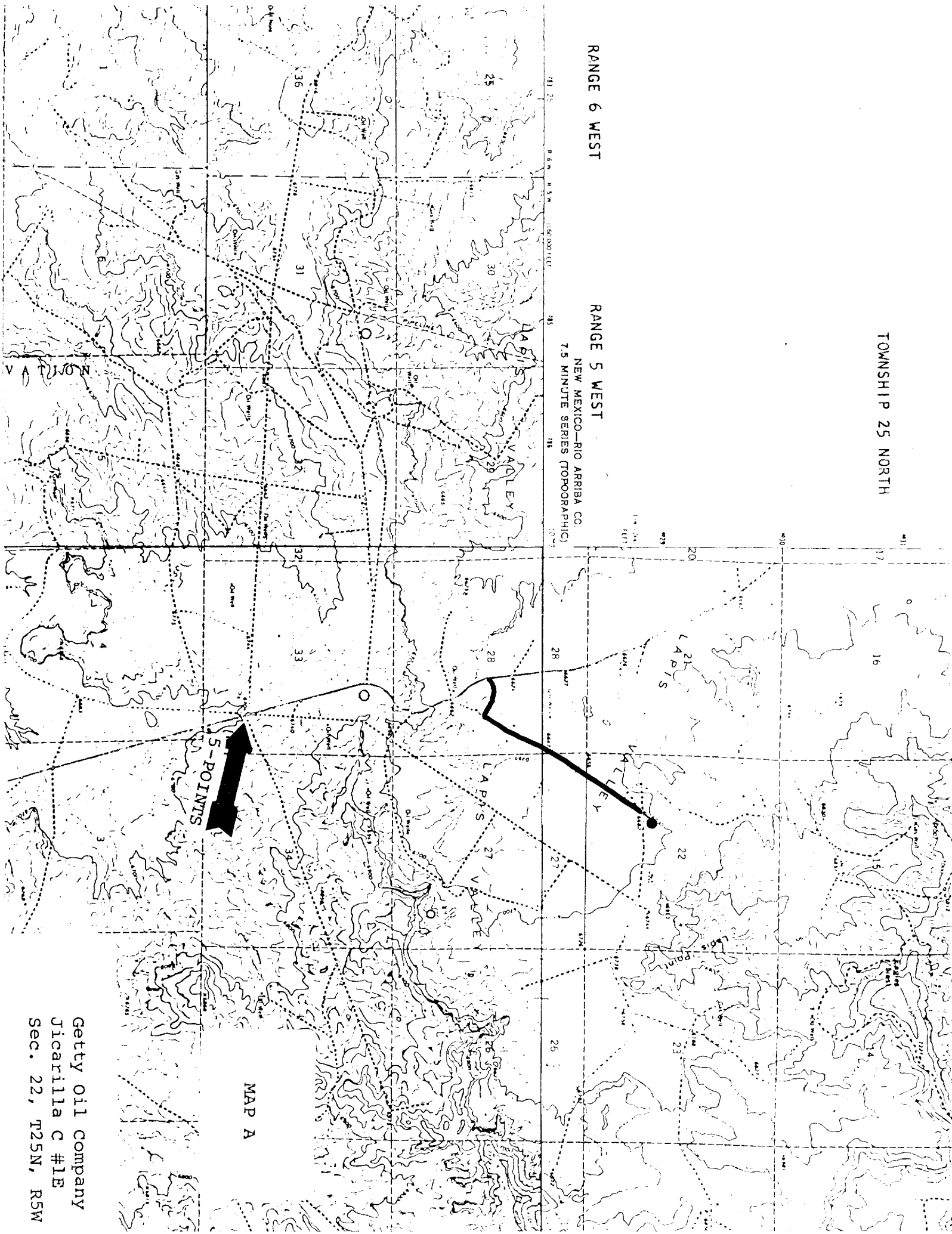
Date Surveyed August 27, 1981
Registered Professional Engineer and Land Surveyor
Fred B. Kert Jr.
Certificate No. 3950

TOWNSHIP 25 NORTH

RANGE 6 WEST

RANGE 5 WEST

NEW MEXICO—RIO ARriba CO.
7.5 MINUTE SERIES (TOPOGRAPHIC)



MAP A

Getty Oil Company
Jicarilla C #1E
Sec. 22, T25N, R5W