

UNITED STATES  
DEPARTMENT OF THE INTERIOR  
GEOLOGICAL SURVEY

## APPLICATION FOR PERMIT TO DRILL, DEEPEN, OR PLUG BACK

## 1a. TYPE OF WORK

DRILL ☒DEEPEN ☐PLUG BACK ☐

## b. TYPE OF WELL

OIL  
WELL ☐GAS  
WELL ☒

OTHER

SINGLE  
ZONE ☒MULTIPLE  
ZONE ☐

## 2. NAME OF OPERATOR

Energy Reserves Group, Inc.

## 3. ADDRESS OF OPERATOR

Box 3280, Casper, Wyoming 82602

4. LOCATION OF WELL (Report location clearly and in accordance with any State requirements.)\*  
At surface

At proposed prod. zone 1590' FSL &amp; 1630' FWL (NE/SW)

## 14. DISTANCE IN MILES AND DIRECTION FROM NEAREST TOWN OR POST OFFICE\*

Approx. 15 miles East from Counselors Trading Post

## 15. DISTANCE FROM PROPOSED\*

LOCATION TO NEAREST

PROPERTY OR LEASE LINE, FT.

(Also to nearest drlg. unit line, if any) 1590'

## 18. DISTANCE FROM PROPOSED LOCATION\*

TO NEAREST WELL, DRILLING, COMPLETED,  
OR APPLIED FOR, ON THIS LEASE, FT.

400'

## 16. NO. OF ACRES IN LEASE

2515.15

## 19. PROPOSED DEPTH

7315'

17. NO. OF ACRES ASSIGNED  
TO THIS WELL

(160)

## 20. ROTARY OR CABLE TOOLS

Rotary

## 21. ELEVATIONS (Show whether DF, RT, GR, etc.)

6807' GR (ungraded)

## 22. APPROX. DATE WORK WILL START\*

Sept., 1981

## 23. PROPOSED CASING AND CEMENTING PROGRAM

SIZE OF HOLE	SIZE OF CASING	WEIGHT PER FOOT	SETTING DEPTH	QUANTITY OF CEMENT
12-1/4"	8-5/8"	24#	500'±	Cement to the surface
7-7/8"	4-1/2"	10.5# & 11.6#	7315'±	1400 sq'

DRILLING OPERATIONS AUTHORIZED ARE  
SUBJECT TO COMPLIANCE WITH ATTACHEDThis action is subject to administrative  
appeal pursuant to 30 CFR 2801

Gas is dedicated with El Paso Natural Gas Co.



IN ABOVE SPACE DESCRIBE PROPOSED PROGRAM: If proposal is to deepen or plug back, give data on present productive zone and proposed new productive zone. If proposal is to drill or deepen directionally, give pertinent data on subsurface locations and measured and true vertical depths. Give blowout preventer program, if any.

24. SIGNED William J. [Signature] TITLE Field Services Adm. DATE 8-14-81

(This space for Federal or State office use)

PERMIT NO. \_\_\_\_\_ APPROVAL DATE \_\_\_\_\_

APPROVED BY \_\_\_\_\_ TITLE \_\_\_\_\_  
CONDITIONS OF APPROVAL, IF ANY:DATE OCT 13 1981

h-7-  
300104 for use  
RIMOCO

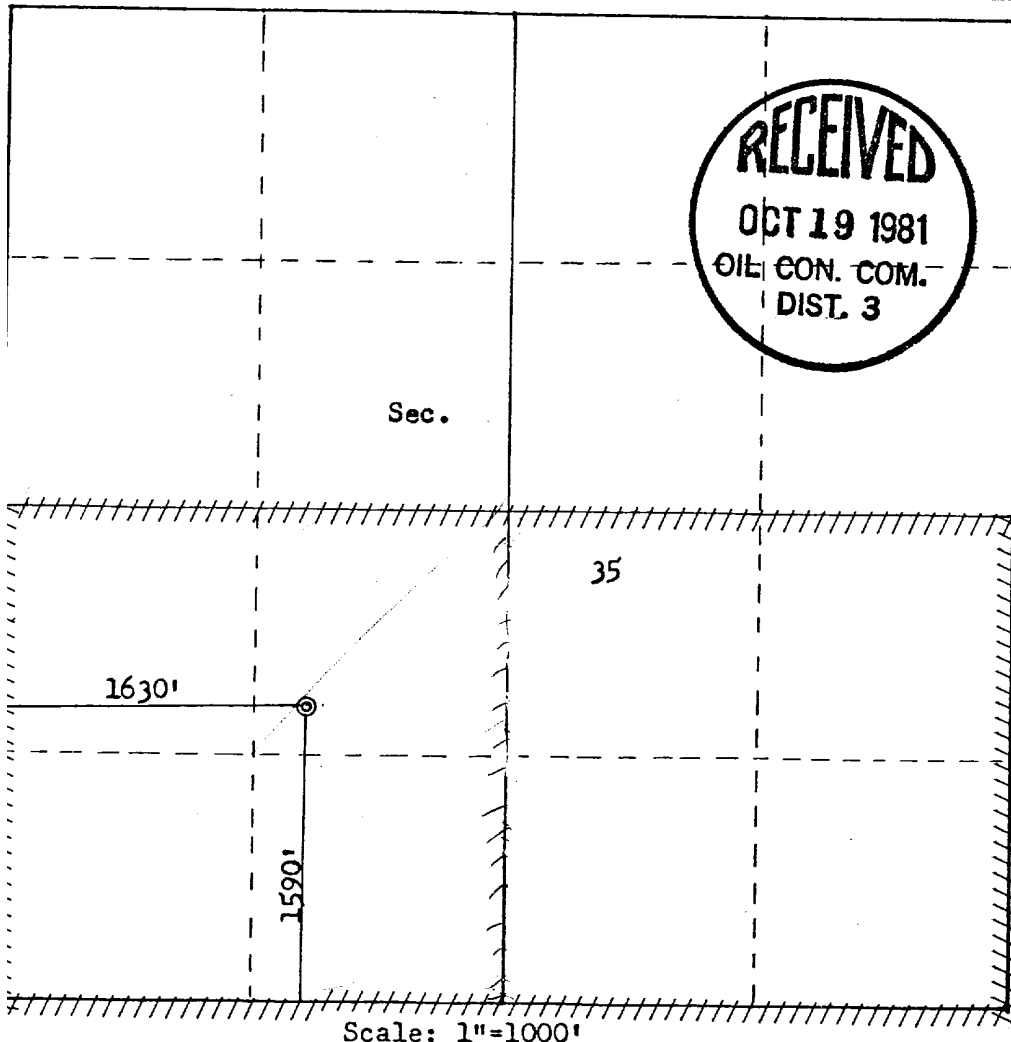
All distances must be from the outer boundaries of the Section.

Operator <b>ENERGY RESERVES GROUP</b>			Lease <b>JICARILLA 35</b>		Well No. <b>14</b>
Unit Letter <b>K</b>	Section <b>35</b>	Township <b>25N</b>	Range <b>5W</b>	County <b>Rio Arriba</b>	
Actual Footage Location of Well: <b>1590</b> feet from the <b>South</b> line and <b>1630</b> feet from the <b>West</b> line					
Ground Level Elev: <b>6807</b>	Producing Formation <b>Dakota</b>	Pool <b>W. Lind. Gallup</b> <del>Basin-Dakota</del>		Dedicated Acreage: <b>320</b> (160) Acres	

1. Outline the acreage dedicated to the subject well by colored pencil or hatchure marks on the plat below.
2. If more than one lease is dedicated to the well, outline each and identify the ownership thereof (both as to working interest and royalty).
3. If more than one lease of different ownership is dedicated to the well, have the interests of all owners been consolidated by communitization, unitization, force-pooling, etc?  
☐ Yes ☐ No If answer is "yes," type of consolidation \_\_\_\_\_

If answer is "no," list the owners and tract descriptions which have actually been consolidated. (Use reverse side of this form if necessary.) \_\_\_\_\_

No allowable will be assigned to the well until all interests have been consolidated (by communitization, unitization, forced-pooling, or otherwise) or until a non-standard unit, eliminating such interests, has been approved by the Commission.



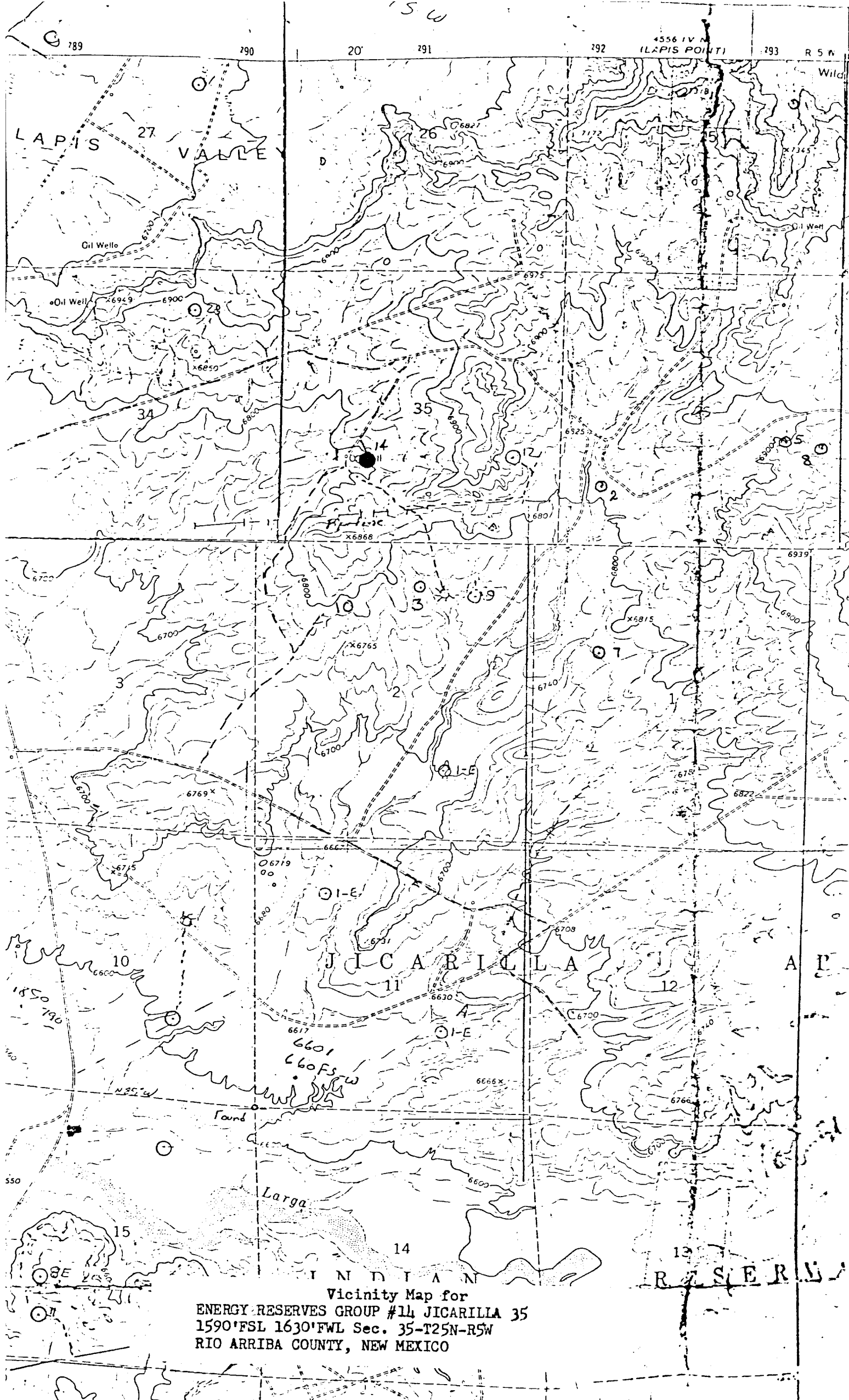
CERTIFICATION

I hereby certify that the information contained herein is true and complete to the best of my knowledge and belief.

Name William J. Kant  
 Position Field Services Administrator  
 Company Energy Reserves Group, Inc.  
 Date August 17, 1981

I hereby certify that the well location shown on this plat was plotted from field notes of actual surveys made by me or under my supervision, and that the same is true and correct to the best of my knowledge and belief.

Date Surveyed July 29, 1981  
 Registered Professional Engineer and Land Surveyor  
Fred B. Kerr Jr.  
 Certification No. 3950



Vicinity Map for  
ENERGY RESERVES GROUP #14 JICARILLA 35  
1590' FSL 1630' FWL Sec. 35-T25N-R5W  
RIO ARRIBA COUNTY, NEW MEXICO