

UNITED STATES
DEPARTMENT OF THE INTERIOR
GEOLOGICAL SURVEY

30-039-22865

APPLICATION FOR PERMIT TO DRILL, DEEPEN, OR PLUG BACK

1a. TYPE OF WORK

DRILL ☒DEEPEN ☐PLUG BACK ☐

b. TYPE OF WELL

OIL
WELL ☐GAS
WELL ☒

OTHER

SINGLE
ZONE ☒MULTIPLE
ZONE ☐

2. NAME OF OPERATOR

Petro-Lewis Corporation

3. ADDRESS OF OPERATOR

P.O. Box 2250, Denver, Colorado 80201

4. LOCATION OF WELL (Report location clearly and in accordance with any State requirements.)*

At surface

2000' FNL & 1000' FWL (SW NW)

At proposed prod. zone

Same

14. DISTANCE IN MILES AND DIRECTION FROM NEAREST TOWN OR POST OFFICE*

Location is 1.2 miles Southeast of Ojito Camp, New Mexico

15. DISTANCE FROM PROPOSED*

LOCATION TO NEAREST
PROPERTY OR LEASE LINE, FT.
(Also to nearest drlg. unit line, if any)

1000'

16. NO. OF ACRES IN LEASE

550.84

17. NO. OF ACRES ASSIGNED
TO THIS WELL

N 390.84

18. DISTANCE FROM PROPOSED LOCATION*
TO NEAREST WELL, DRILLING, COMPLETED,
OR APPLIED FOR, ON THIS LEASE, FT.

19. PROPOSED DEPTH

8500'

20. ROTARY OR CABLE TOOLS

Rotary

21. ELEVATIONS (Show whether DF, RT, GR, etc.)

DRILLING OPERATIONS AUTHORIZED ARE 7340' Graded

22. APPROX. DATE WORK WILL START*

September 1, 1981

SUBJECT TO COMPLIANCE WITH ATTACHED

PROPOSED CASING AND CEMENTING PROGRAM

"GENERAL REQUIREMENTS"

| SIZE OF HOLE | SIZE OF CASING | WEIGHT PER FOOT | SETTING DEPTH | QUANTITY OF CEMENT |
|--------------|----------------|-----------------|---------------|------------------------|
| 12 1/4" | 8 5/8" New | 24# K-55 ST&C | 500' | 150 sxs plus additives |
| 7 7/8" | 5 1/2" New | 15.5# K-55 ST&C | 8500' | 200 sxs plus additives |

1. Drill 12 1/4" hole and set 8 5/8" surface casing to 500' with good returns.
2. Log B.O.P. checks in daily drill reports and drill 7 7/8" hole to 8500'.
3. Run tests if warranted and run 5 1/2" casing if productive.
4. Run logs, as needed, and perforate and stimulate as needed.

EXHIBITS ATTACHED:

- "A" Location and Elevation Plat
- "B" The Ten-Point Compliance Program
- "C" The Blowout Preventer Diagram
- "D" The Multi-Point Requirements for A.P.D.
- "E" Access Road Maps to Location
- "F" Radius Map of Field
- "G" & "G₁" Drill Pad Layout, Production Facilities & Cut-Fill Cross-Section
- "H" Drill Rig Layout

IN ABOVE SPACE DESCRIBE PROPOSED PROGRAM: If proposal is to deepen or plug back, give data on present productive zone and proposed new productive zone. If proposal is to drill or deepen directionally, give pertinent data on subsurface locations and measured and true vertical depths. Give blowout preventer program, if any.

24.

SIGNED

John L. Schmidt

TITLE Senior Staff Petroleum Engineer DATE August 12, 1981

(This space for Federal or State office use)

PERMIT NO.

APPROVAL DATE

APPROVED BY

Dean Elliott

TITLE

For Acting Dist Sup

DATE

DEC 09 1981

CONDITIONS OF APPROVAL, IF ANY:

NWU 3-843

Hold C104 for NSL

Gas is dedicated

*See Instructions On Reverse Side

10000





OIL CONSERVATION DIVISION

P. O. BOX 2088

SANTA FE, NEW MEXICO 87501

Form L-102

Revised 10-1-77

STATE OF NEW MEXICO

ENERGY AND MINERALS DEPARTMENT

All distances must be from the outer boundaries of the Section

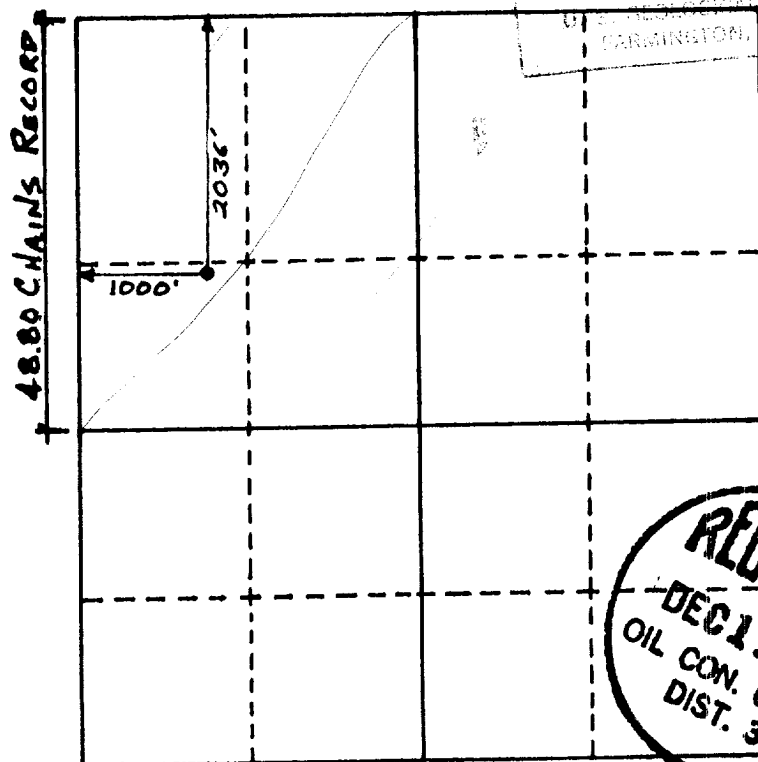
| | | | | | |
|--|--|-----------------------------|----------------------------------|------------------------------------|--|
| Operator PETRO-LEWIS | | Lease SF-080565 | | Well No. *8A FLORANCE | |
| Initial Letter E | Section 5 | Township 25 NORTH | Range 3 WEST | County RIO ARriba | |
| Actual Posting Location of Well: 2000 feet from the NORTH line and 1000 feet from the WEST line | | | | | |
| Ground Level Elev. 7340' (GRAPE) | Producing Formation Mesa Verde | | Pool BLANCO MESA VERDE | Dedicated Acreage: 34.84 | |

1. Outline the acreage dedicated to the subject well by colored pencil or hatchure marks on the plat below.
2. If more than one lease is dedicated to the well, outline each and identify the ownership thereof (both as to working interest and royalty).
3. If more than one lease of different ownership is dedicated to the well, have the interests of all owners been consolidated by communitization, unitization, force-pooling, etc?

☐ Yes ☐ No If answer is "yes," type of consolidation _____

If answer is "no," list the owners and tract descriptions which have actually been consolidated. (Use reverse side of this form if necessary.) _____

No allowable will be assigned to the well until all interests have been consolidated (by communitization, unitization, forced-pooling, or otherwise) or until a non-standard unit, eliminating such interests, has been approved by the Division



SCALE 1"=1500'

CERTIFICATION

I hereby certify that the information contained herein is true and complete to the best of my knowledge and belief.

Name **George Lapaseotes**
 Position **President, Powers Elevation**
 Agent Consultant for
 Company **Petro-Lewis**
 Date **September 14, 1981**

I hereby certify that the well location shown on this plat was plotted from field notes of actual surveys made by me or under my supervision, and that the same is true and correct to the best of my knowledge and belief.

Date Surveyed _____
 Registered Professional Engineer
 No. **6844**
Gerald G. Huddleston
 DISTRICT 3

