

UNITED STATES  
DEPARTMENT OF THE INTERIOR  
BUREAU OF LAND MANAGEMENT

(Other instructions on  
reverse side)

FORM APPROVED  
OMB NO. 1004-0136  
Expires: February 28, 1995

APPLICATION FOR PERMIT TO DRILL OR DEEPEN

1a. TYPE OF WORK

DRILL ☒

DEEPEN ☐

b. TYPE OF WELL

OIL  
WELL ☐

GAS  
WELL ☒

OTHER

SINGLE  
ZONE ☒

MULTIPLE  
ZONE ☐

2. NAME OF OPERATOR

Elm Ridge Resources, Inc. (214) 696-8090

3. ADDRESS AND TELEPHONE NO.

4925 Greenville Ave, Suite 1305, Dallas, Tx 75206

4. LOCATION OF WELL (Report location clearly and in accordance with any State requirements.)\*

At surface

790' FNL & 790' FEL

At proposed prod. zone

Same

14. DISTANCE IN MILES AND DIRECTION FROM NEAREST TOWN OR POST OFFICE\*

11 air miles NNE of Counselor, NM

15. DISTANCE FROM PROPOSED\*

LOCATION TO NEAREST  
PROPERTY OR LEASE LINE, FT.  
(Also to nearest drig. unit line, if any)

3,430'

16. NO. OF ACRES IN LEASE

2,560

18. DISTANCE FROM PROPOSED LOCATION\*  
TO NEAREST WELL, DRILLING, COMPLETED,  
OR APPLIED FOR, ON THIS LEASE, FT.

1,117'

19. PROPOSED DEPTH

7,250'

17. NO. OF ACRES ASSIGNED  
TO THIS WELL

320

20. ROTARY OR CABLE TOOLS

Rotary

21. ELEVATIONS (Show whether DF, RT, GR, etc.)

6,670' ungraded ground

22. APPROX. DATE WORK WILL START\*

Jan. 1, 1998

23.

PROPOSED CASING AND CEMENTING PROGRAM

SIZE OF HOLE	GRADE, SIZE OF CASING	WEIGHT PER FOOT	SETTING DEPTH	QUANTITY OF CEMENT
12-1/4"	8-5/8"	24# (K-55)	350'	≈250 cu ft & to surface
7-7/8"	4-1/2"	10.5# (J-55)	7,250'	≈2,990 cu ft & to surface

OIL CON. DIV.  
DIST. 3

IN ABOVE SPACE DESCRIBE PROPOSED PROGRAM: If proposal is to deepen, give data on present productive zone and proposed new productive zone. If proposal is to drill or deepen directionally, give pertinent data on subsurface locations and measured and true vertical depths. Give blowout preventer program, if any.

24.

SIGNED

TITLE

DATE

Consultant (505) 466-8120

11-2-97

(This space for Federal or State office use)

PERMIT NO.

APPROVAL DATE

Application approval does not warrant or certify that the applicant holds legal or equitable title to those rights in the subject lease which would entitle the applicant to conduct operations thereon.  
CONDITIONS OF APPROVAL, IF ANY:

APPROVED BY

Hector A. Villalobos

TITLE

DATE

12-16-97

\*See Instructions On Reverse Side

Title 18 U.S.C. Section 1001, makes it a crime for any person knowingly and willfully to make to any department or agency of the United States any false, fictitious or fraudulent statements or representations as to any matter within its jurisdiction.

District II  
PO Drawer DD, Artesia, NM 88211-0719  
District III  
1000 Rio Bravo Rd., Aztec, NM 87410  
District IV  
PO Box 2088, Santa Fe, NM 87504-2088

CERTIFICATE OF SURVEY

OIL CONSERVATION DIVISION  
PO Box 2088  
Santa Fe, NM 87504-2088

Revised February 2,  
Instructions c  
Submit to Appropriate District  
State Lease - 4  
Fee Lease - J

☐ AMENDED RE

WELL LOCATION AND ACREAGE DEDICATION PLAT

AFT Number 30-039-25808		Pool Code 71599	Pool Name Basin Dakota
Property Code 22558	Property Name Jicarilla 10		Well Number 1 - E
OGRID No. 149052	Operator Name ELM RIDGE RESOURCES		Elevation 6670'

10 Surface Location

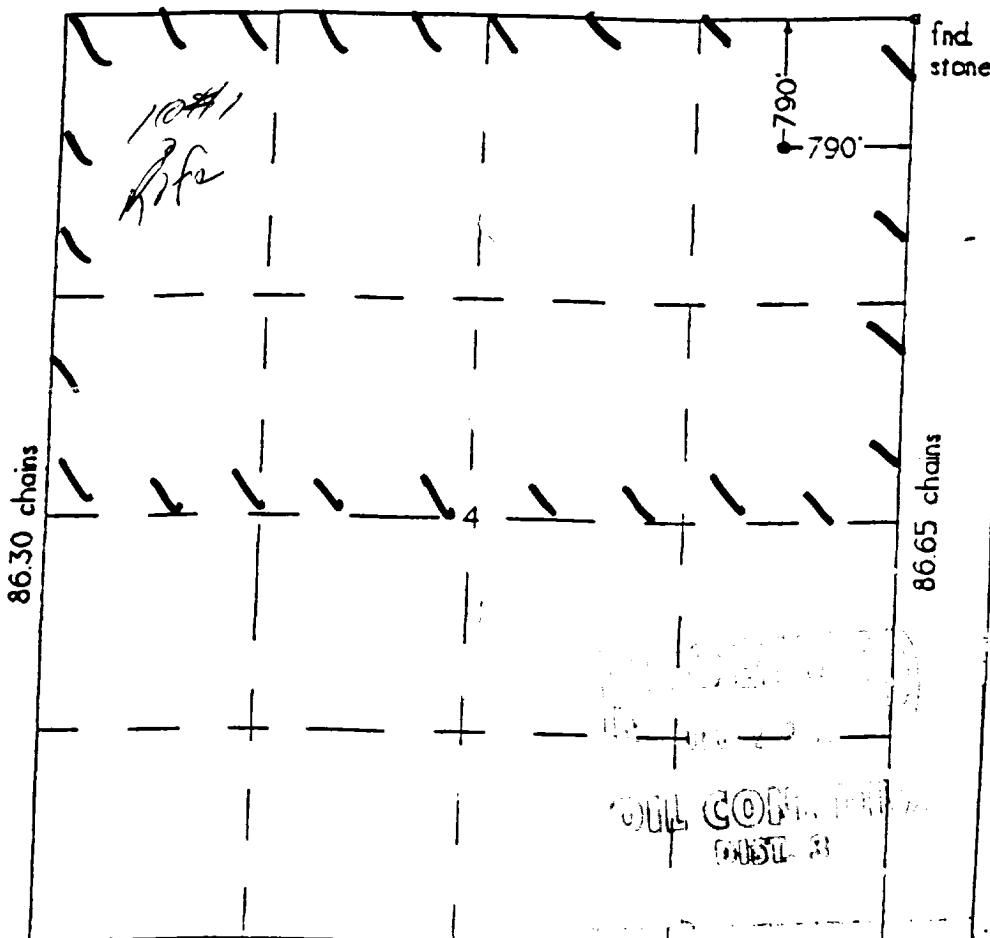
UL or lot no.	Section	Township	Range	Lot Ida	Feet from the	North/South line	Feet from the	East/West line	County
A	4	24 N.	5 W.		790	North	790	East	Rio Arriba

11 Bottom Hole Location If Different From Surface

UL or lot no.	Section	Township	Range	Lot Ida	Feet from the	North/South line	Feet from the	East/West line	County

12 Dedicated Acres 13 Joint or Infill 14 Consolidation Code 15 Order No.

NO ALLOWABLE WILL BE ASSIGNED TO THIS COMPLETION UNTIL ALL INTERESTS HAVE BEEN CONSOLIDATED  
OR A NON-STANDARD UNIT HAS BEEN APPROVED BY THE DIVISION



17 OPERATOR CERTIFICATION

I hereby certify that the information contained herein is true and complete to the best of my knowledge and belief

Signature  
Brian Wood

Printed Name  
Brian Wood

Title  
Consultant

Date  
November 2, 1997

18 SURVEYOR CERTIFICATION

I hereby certify that the well location shown on this plat was plotted from field notes of actual surveys made by me or under my supervision, and that the same is true and correct to the best of my belief

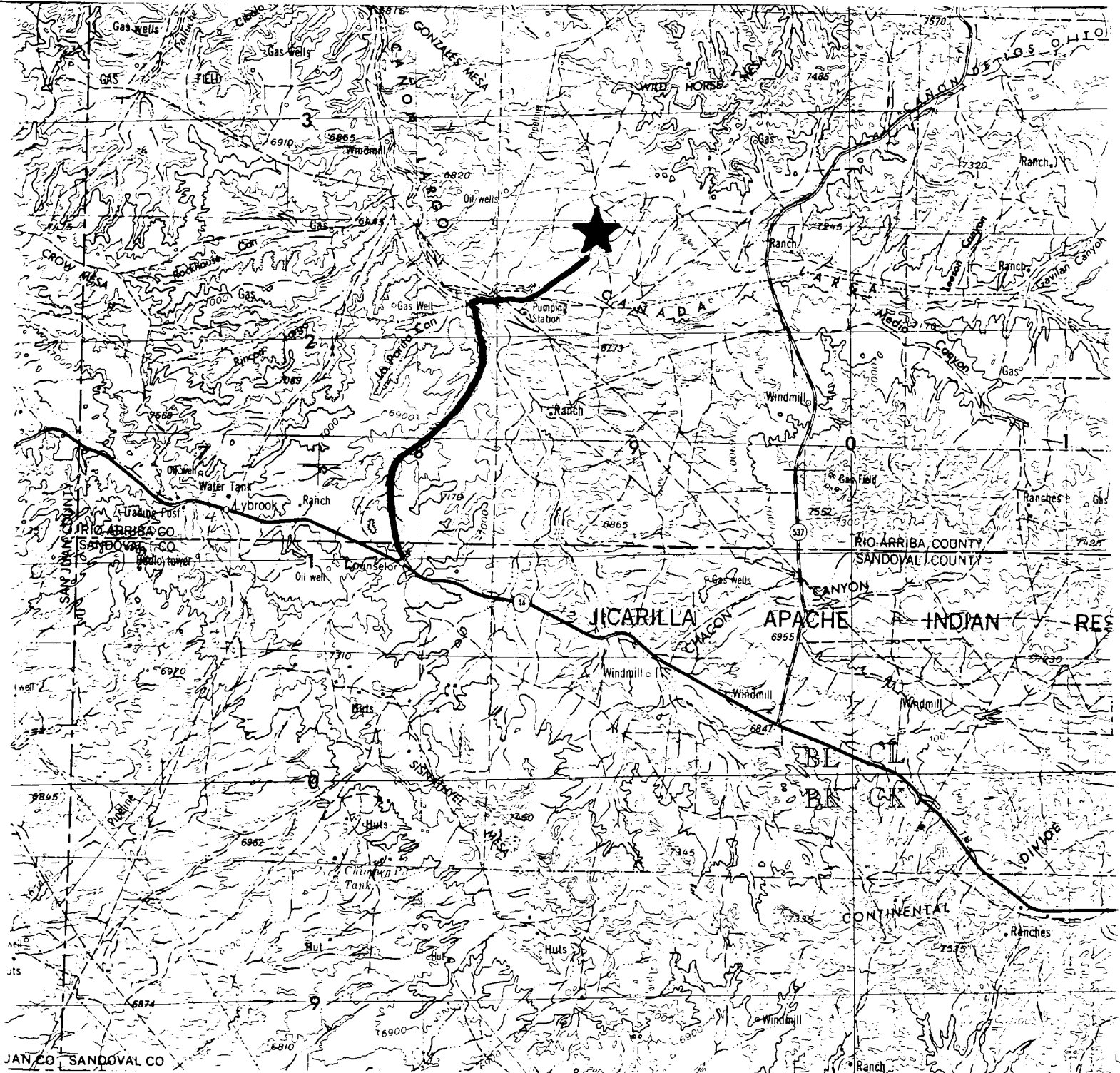
Date of Survey  
9-3-97

Signature and Seal of Professional Surveyor  
6844

GRAID G. HUDDLESTON  
REGISTERED LAND SURVEYOR

Elm Ridge Resources, Inc.  
Jicarilla 1-E  
790' FNL & 790' FEL  
Sec. 4, T. 24 N., R. 5 W.  
Rio Arriba County, New Mexico

PAGE 11



PROPOSED WELL:



ACCESS ROUTE:



**PERMITS WEST** INC.  
PROVIDING PERMITS for LAND USERS