

UNITED STATES  
DEPARTMENT OF THE INTERIOR  
GEOLOGICAL SURVEY

## APPLICATION FOR PERMIT TO DRILL, DEEPEN, OR PLUG BACK

## 1a. TYPE OF WORK

DRILL ☒DEEPEN ☐PLUG BACK ☐

## b. TYPE OF WELL

OIL  
WELL ☒GAS  
WELL ☐OTHER ☐SINGLE  
ZONE ☒MULTIPLE  
ZONE ☐

## 2. NAME OF OPERATOR

Merrion Oil &amp; Gas Corporation

## 3. ADDRESS OF OPERATOR

P. O. Box 1017, Farmington, New Mexico 87401

## 4. LOCATION OF WELL (Report location clearly and in accordance with any State requirements.)

At surface 840' FSL &amp; 1680' FWL

At proposed prod. zone

Same

## 14. DISTANCE IN MILES AND DIRECTION FROM NEAREST TOWN OR POST OFFICE\*

12 miles NE of Lybrook

## 15. DISTANCE FROM PROPOSED\*

LOCATION TO NEAREST  
PROPERTY OR LEASE LINE, FT.  
(Also to nearest drlg. unit line, if any)

840'

## 18. DISTANCE FROM PROPOSED LOCATION\*

TO NEAREST WELL, DRILLING, COMPLETED,  
OR APPLIED FOR, ON THIS LEASE, FT.

200'

## 16. NO. OF ACRES IN LEASE N.

560

## 19. PROPOSED DEPTH

5930'

## 17. NO. OF ACRES ASSIGNED

160

## 20. ROTARY OR CABLE TOOLS-

Rotary

## 21. ELEVATIONS (Show whether DF, RT, GR, etc.)

6353 GL

## 22. APPROX. DATE WORK WILL START\*

April 25, 1982

## 23. PROPOSED CASING AND CEMENTING PROGRAM

SIZE OF HOLE	SIZE OF CASING	WEIGHT PER FOOT	SETTING DEPTH	QUANTITY OF CEMENT
12-1/4"	8-5/8"	20#/ft	200'	175 sx.
7-7/8"	4-1/2"	KST 10.5 #/ft	5930'	875 sx.

Will drill 12-1/4" hole to 200 ft. and set 200 ft. of 8-5/8", 20 # new casing with 175 sx. cement. Will drill 7-7/8" hole to 5930 ft. and run open hole logs. If appears productive will run 5930 ft. of 4-1/2", 10.5#/ft, new casing and cement with 875 sx. Will set stage collar @ approximately 4410 ft. and bring cement up across Ojo Alamo formation. Will perforate and stimulate as required. Minimum specifications for pressure control equipment which is to be used: 10" 900 series double ram blow out preventer.

## Estimated Tops:

Ojo Alamo	1555	
Pictured Cliffs	2210	Gas, Saltwater
Mesa Verde	3770	Saltwater
Gallup	5530	Oil, Saltwater

IN ABOVE SPACE DESCRIBE PROPOSED PROGRAM: If proposal is to deepen or plug back, give data on present productive zone and proposed new productive zone. If proposal is to drill or deepen directionally, give pertinent data on subsurface locations and measured and true vertical depths. Give blowout preventer program, if any.

24.

SIGNED

(This space for Federal or State office use)

PERMIT NO.

APPROVED BY

CONDITIONS OF APPROVAL, IF ANY:

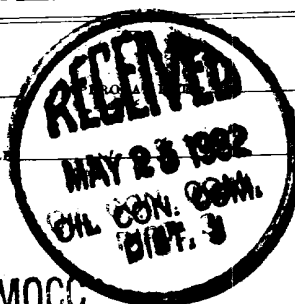
TITLE

President

DATE

3/3/82

NMOCC



JAMES F. ELLIOTT

DATE

MAY 24 1982

JAMES F. ELLIOTT  
DISTRICT ENGINEER



All distances must be from the outer boundaries of the Section.

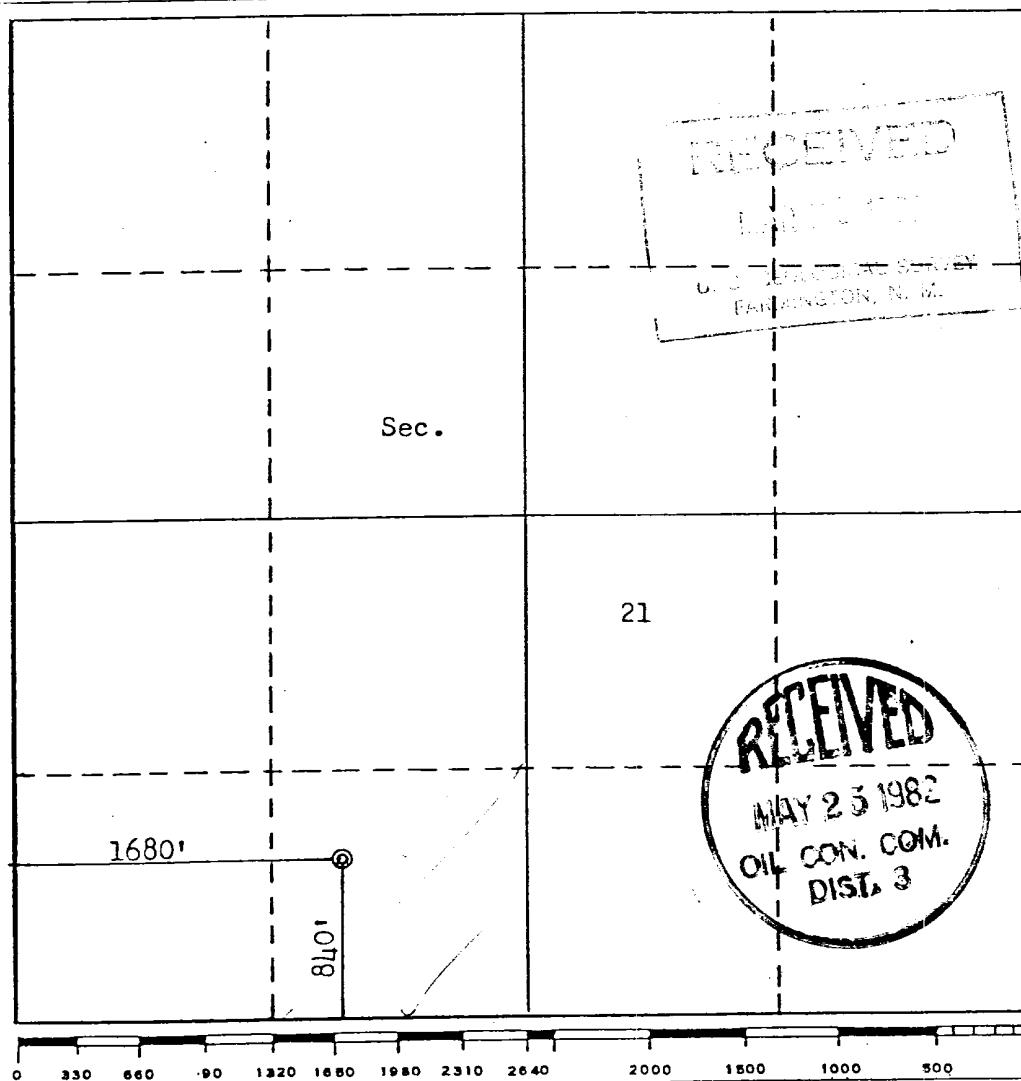
Operator <b>MERRION OIL &amp; GAS CORPORATION</b>			Lease <b>Canyon Largo Unit</b>		Well No. <b>316</b>
Unit Letter <b>N</b>	Section <b>21</b>	Township <b>25N</b>	Range <b>6W</b>	County <b>Rio Arriba</b>	
Actual Footage Location of Well: <b>840</b> feet from the <b>South</b> line and <b>1680</b> feet from the <b>West</b> line					
Ground Level Elev. <b>6353</b>	Producing Formation <b>Gallup</b>		Pool <b>Devils Fork Gallup</b>		Dedicated Acreage: <b>1.60</b> Acres

1. Outline the acreage dedicated to the subject well by colored pencil or hachure marks on the plat below.
2. If more than one lease is dedicated to the well, outline each and identify the ownership thereof (both as to working interest and royalty).
3. If more than one lease of different ownership is dedicated to the well, have the interests of all owners been consolidated by communitization, unitization, force-pooling, etc?

☐ Yes ☐ No If answer is "yes," type of consolidation \_\_\_\_\_

If answer is "no," list the owners and tract descriptions which have actually been consolidated. (Use reverse side of this form if necessary.) \_\_\_\_\_

No allowable will be assigned to the well until all interests have been consolidated (by communitization, unitization, forced-pooling, or otherwise) or until a non-standard unit, eliminating such interests, has been approved by the Commission.



CERTIFICATION

I hereby certify that the information contained herein is true and complete to the best of my knowledge and belief.

Name  
**G. Gregory Merrion**

Position  
**President**

Company  
**Merrion Oil & Gas Corporation**

Date  
**3/3/82**

I hereby certify that the well location shown on this plat was plotted from field notes of actual surveys made by me or under my supervision, and that the same is true and correct to the best of my knowledge and belief.

Date Surveyed

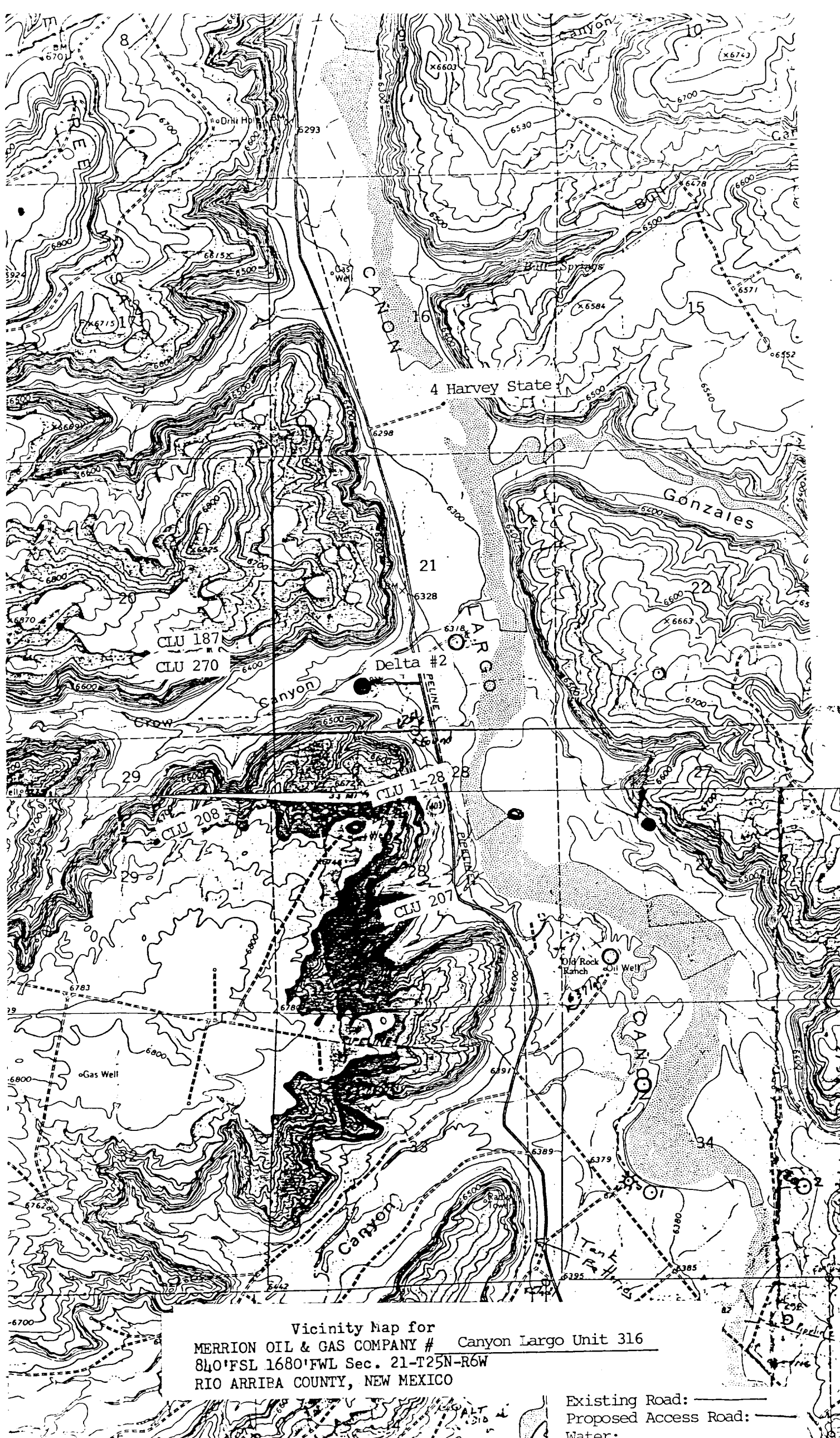
**February 16, 1982**

Registered Professional Engineer and/or Land Surveyor

**Fred B. Kerr Jr.**

Certificate No.

**3950**



Vicinity Map for  
MERRION OIL & GAS COMPANY # Canyon Largo Unit 316  
840'FSL 1680'FWL Sec. 21-T25N-R6W  
RIO ARRIPIA COUNTY, NEW MEXICO

Existing Road: ———  
Proposed Access Road: - - -  
Water: [Blue Shading]