

UNITED STATES
DEPARTMENT OF THE INTERIOR
GEOLOGICAL SURVEY

30-039-23101

APPLICATION FOR PERMIT TO DRILL, DEEPEN, OR PLUG BACK

1a. TYPE OF WORK
DRILL ☒ DEEPEN ☐ PLUG BACK ☐

b. TYPE OF WELL
OIL WELL ☐ GAS WELL ☒ OTHER ☐ SINGLE ZONE ☒ MULTIPLE ZONE ☐

2. NAME OF OPERATOR
Getty Oil Company

3. ADDRESS OF OPERATOR
P.O. Box 3360, Casper, WY 82602-3360

4. LOCATION OF WELL (Report location clearly and in accordance with any State requirements.)
At surface 1785' FNL & 1090' FWL of Sec 17
At proposed prod. zone same

5. LEASE DESIGNATION AND SERIAL NO.
SF 079600

6. IF INDIAN, ALLOTTEE OR TRIBE NAME

7. UNIT AGREEMENT NAME

8. FARM OR LEASE NAME
C. W. Roberts

9. WELL NO.
8

10. FIELD AND POOL, OR WILDCAT
Blanco Mesa Verde

11. SEC., T., R., M., OR BLE. AND SURVEY OR AREA
E Sec 17-T25N-R3W

12. COUNTY OR PARISH
Rio Arriba

13. STATE
New Mexico

14. DISTANCE IN MILES AND DIRECTION FROM NEAREST TOWN OR POST OFFICE*
Approximately 20 miles Northwest of Lindbergh, N. M.

15. DISTANCE FROM PROPOSED* LOCATION TO NEAREST PROPERTY OR LEASE LINE, FT.
1785' (Also to nearest drilg. unit line, if any) 855'

16. NO. OF ACRES IN LEASE
1272.04

17. NO. OF ACRES ASSIGNED TO THIS WELL
N/2 - 320 acres

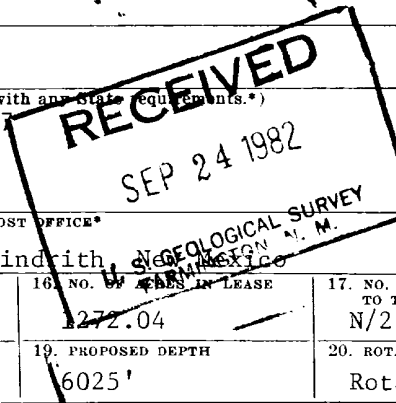
18. DISTANCE FROM PROPOSED LOCATION* TO NEAREST WELL, DRILLING COMPLETED, OR APPLIED FOR, ON THIS LEASE, FT.
925'

19. PROPOSED DEPTH
6025'

20. ROTARY OR CABLE TOOLS
Rotary

21. ELEVATIONS (Show whether DF, RT, GR, etc.)
7131' GR

22. APPROX. DATE WORK WILL START*
October 1, 1982



| 23. PROPOSED CASING AND CEMENTING PROGRAM | | | | |
|---|----------------|-----------------|---------------|-------------------------------|
| SIZE OF HOLE | SIZE OF CASING | WEIGHT PER FOOT | SETTING DEPTH | QUANTITY OF CEMENT |
| 12 1/4" | 8 5/8" | 24.0# | 350' | *290 cu ft to cmt to surface |
| 7 7/8" | 5 1/2" | 14.0# & 15.5# | 6025' | *1569 cu ft to cmt to surface |

* Cement volumes will depend on volume calculated from hole caliper.
Thirteen Point Surface Use Plan Attached.

IN ABOVE SPACE DESCRIBE PROPOSED PROGRAM: If proposal is to deepen or plug back, give data on present productive zone and proposed new productive zone. If proposal is to drill or deepen directionally, give pertinent data on subsurface locations and measured and true vertical depths. Give blowout preventer program, if any.

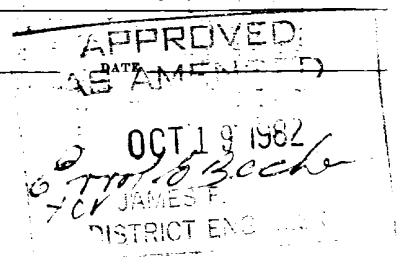
24. SIGNED [Signature] TITLE Area Superintendent DATE 9-17-82
(This space for Federal or State office use)

PERMIT NO. _____ APPROVAL DATE _____

APPROVED BY _____ TITLE _____
CONDITIONS OF APPROVAL, IF ANY:

27

NMCCC



All distances must be from the outer boundaries of the Section.

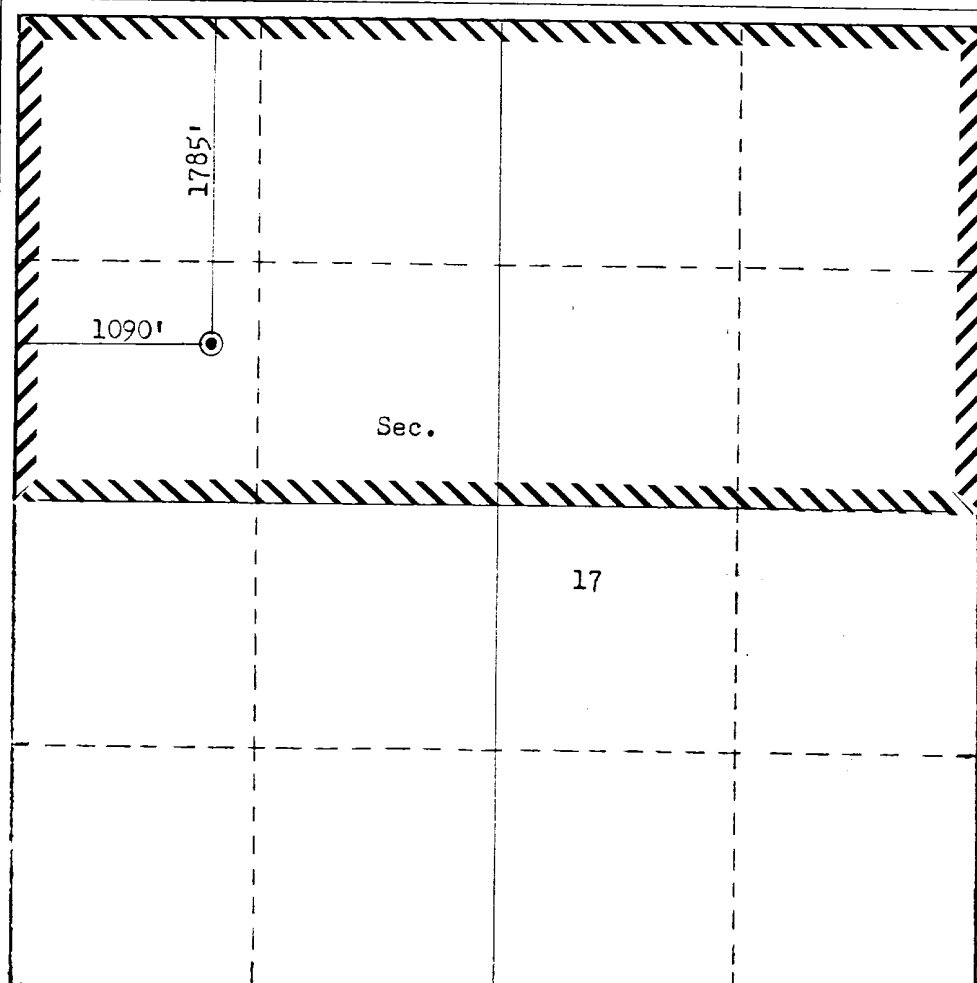
| | | | | | | | | |
|--|--|------------------------|-------------------------------|-----------------------------|---|----------------------|--|--|
| Operator GETTY OIL COMPANY | | | Lease C. W. ROBERTS | | | Well No. 8 | | |
| Unit Letter E | Section 17 | Township 25N | Range 3W | County Rio Arriba | | | | |
| Actual Footage Location of Well: 1785 feet from the North line and 1090 feet from the West line | | | | | | | | |
| Ground Level Elev. 7131 | Producing Formation Mesa Verde | | Pool Blanco | | Dedicated Acreage: N/2, 320 Acres | | | |

1. Outline the acreage dedicated to the subject well by colored pencil or hachure marks on the plat below.
2. If more than one lease is dedicated to the well, outline each and identify the ownership thereof (both as to working interest and royalty).
3. If more than one lease of different ownership is dedicated to the well, have the interests of all owners been consolidated by communitization, unitization, force-pooling, etc?

☐ Yes ☐ No If answer is "yes," type of consolidation _____

If answer is "no," list the owners and tract descriptions which have actually been consolidated. (Use reverse side of this form if necessary.) _____

No allowable will be assigned to the well until all interests have been consolidated (by communitization, unitization, forced-pooling, or otherwise) or until a non-standard unit, eliminating such interests, has been approved by the Commission.



CERTIFICATION

I hereby certify that the information contained herein is true and complete to the best of my knowledge and belief.

Name *Dw. Bann*
Position
Area Superintendent
Company
Getty Oil Company
Date
9-17-82

I hereby certify that the well location shown on this plat was plotted from field notes of actual surveys made by me or under my supervision, and that the same is true and correct to the best of my knowledge and belief.

Date Surveyed
August 24, 1982
Registered Professional Engineer
and/or Land Surveyor
Fred B. Kerr Jr.
Fred B. Kerr Jr.

Certificate No.

3950

330 660 990 1320 1650 1980 2310 2640 2970 3300 3630 3960 4290 4620 4950 5280 5610 5940 6270 6600

