

UNITED STATES
DEPARTMENT OF THE INTERIOR
GEOLOGICAL SURVEY

30-039-03132
5. LEASE DESIGNATION AND SERIAL NO.

APPLICATION FOR PERMIT TO DRILL, DEEPEN, OR PLUG BACK

1a. TYPE OF WORK

DRILL ☒

DEEPEN ☐

PLUG BACK ☐

b. TYPE OF WELL

OIL WELL ☐

GAS WELL ☒

OTHER

SINGLE ZONE ☐

MULTIPLE ZONE ☐

2. NAME OF OPERATOR

Amerada Hess Corporation Attn: Drilling Services

3. ADDRESS OF OPERATOR

P. O. Box 2040, Tulsa Oklahoma 74102

4. LOCATION OF WELL (Report location clearly and in accordance with any State requirements)

At surface 1700' FSL 1520 FEL

At proposed prod. zone

14. DISTANCE IN MILES AND DIRECTION FROM NEAREST TOWN OR POST OFFICE*

13 miles NE of Counselor

15. DISTANCE FROM PROPOSED*

LOCATION TO NEAREST PROPERTY OR LEASE LINE, FT. (Also to nearest drlg. unit line, if any)

18. DISTANCE FROM PROPOSED LOCATION* TO NEAREST WELL, DRILLING, COMPLETED, OR APPLIED FOR, ON THIS LEASE, FT.

16. NO. OF ACRES IN LEASE

1600

19. PROPOSED DEPTH

2600

17. NO. OF ACRES ASSIGNED TO THIS WELL

160

20. ROTARY OR CABLE TOOLS

Rotary

21. ELEVATIONS (Show whether DF, RT, GR, etc.)

6789' Ground

22. APPROX. DATE WORK WILL START*

Dec 1, 1982

23. PROPOSED CASING AND CEMENTING PROGRAM

SIZE OF HOLE	SIZE OF CASING	WEIGHT PER FOOT	SETTING DEPTH	QUANTITY OF CEMENT
11	8-5/8"	24#	350'±	175 sx Circulating to surface
7-7/8"	5 1/2"	14#	248'	500 sx

Procedures: Set 8-5/8" surface pipe @ 350', drill to TD, w/low water loss mud. Run electric logs, set 5 1/2" production casing above pictured cliff zone and cmt 5 1/2" casing w/enough cement to bring cement top above the Ojo Alamo formation. Drill out 5 1/2" casing and complete well in the pictured cliff formation.

Exhibits attached:

- Location and elevation plats
- Access road topo map
- Multi-point requirement for APD
- 10 point compliance program
- Plat showing existing wells
- Rig Layout
- BOP Diagram
- Archaeological Report.

IN ABOVE SPACE DESCRIBE PROPOSED PROGRAM: If proposal is to deepen or plug back, give data on present productive zone and proposed new productive zone. If proposal is to drill or deepen directionally, give pertinent data on subsurface locations and measured and true vertical depths. Give blowout preventer program, if any.

24. SIGNED J. R. Wilson J. R. Wilson TITLE Supervisor Drlg Admin Servs. DATE 11-1-82

(This space for Federal or State office use)

PERMIT NO.

APPROVAL DATE

APPROVED BY

TITLE

CONDITIONS OF APPROVAL, IF ANY:

APPROVED
DATE
AS AMENDED

DEC 08 1982

JAMES F. SIMS
DISTRICT ENGINEER

*See Instructions On Reverse Side

NMOCC

All distances must be from the outer boundaries of the Section.

Exhibit A 182

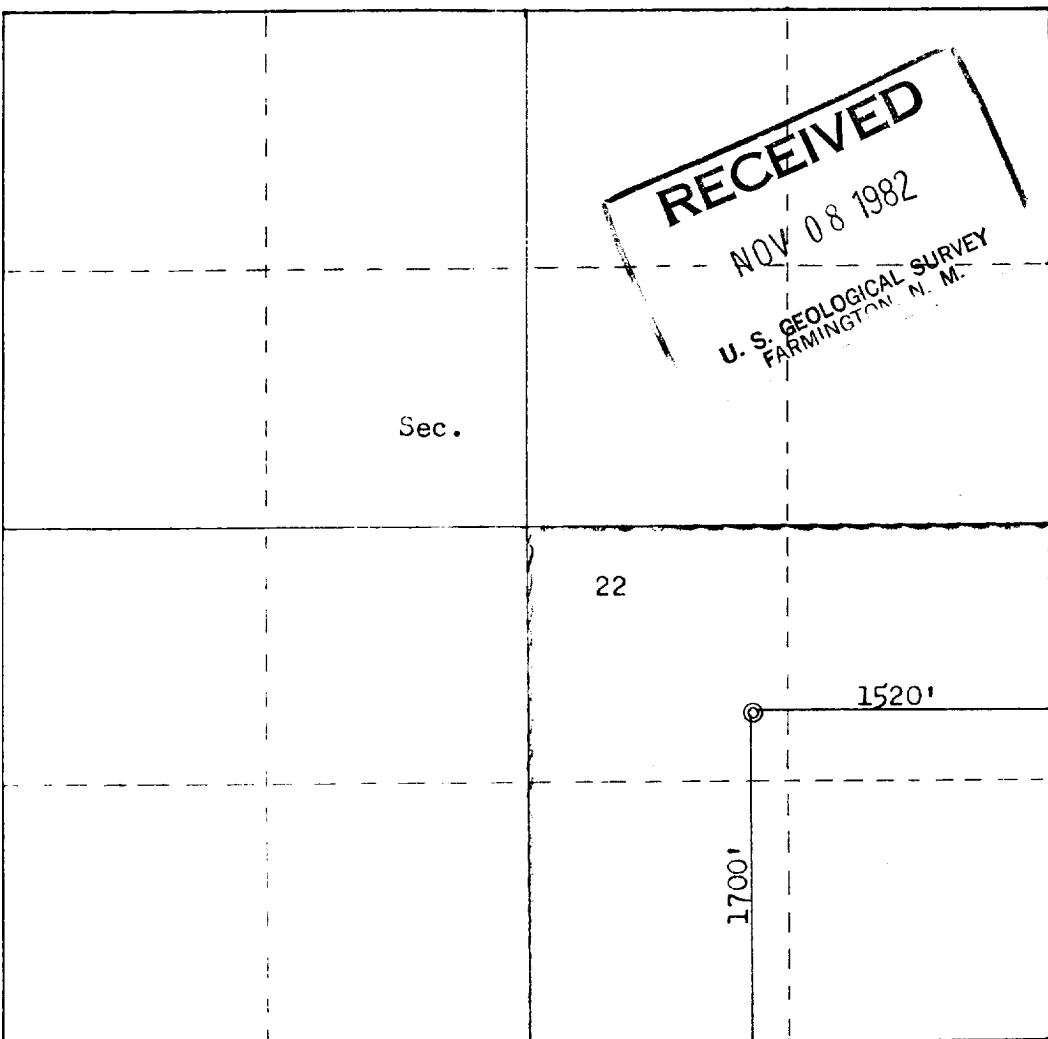
Operator AMERADA HESS CORPORATION			Lease JICARILLA APACHE "C"		Well No. 4
Unit Letter J	Section 22	Township 24N	Range 5W	County Rio Arriba	
Actual Footage Location of Well: 1700 feet from the South line and 1520 feet from the East line					
Ground Level Elev. 6789	Producing Formation Pictured Cliff		Pool Ballard		Dedicated Acreage: 160 Acres

1. Outline the acreage dedicated to the subject well by colored pencil or hachure marks on the plat below.
2. If more than one lease is dedicated to the well, outline each and identify the ownership thereof (both as to working interest and royalty).
3. If more than one lease of different ownership is dedicated to the well, have the interests of all owners been consolidated by communitization, unitization, force-pooling, etc?

☐ Yes ☐ No If answer is "yes," type of consolidation _____

If answer is "no," list the owners and tract descriptions which have actually been consolidated. (Use reverse side of this form if necessary.) _____

No allowable will be assigned to the well until all interests have been consolidated (by communitization, unitization, forced-pooling, or otherwise) or until a non-standard unit, eliminating such interests, has been approved by the Commission.



Scale: 1"=1000'

CERTIFICATION

I hereby certify that the information contained herein is true and complete to the best of my knowledge and belief.

Name
J.R. Wilson J.R. Wilson
Position
Supervisor Drlg. Admin. Serv.
Company
Amerada Hess Corporation

Date
10-20-82

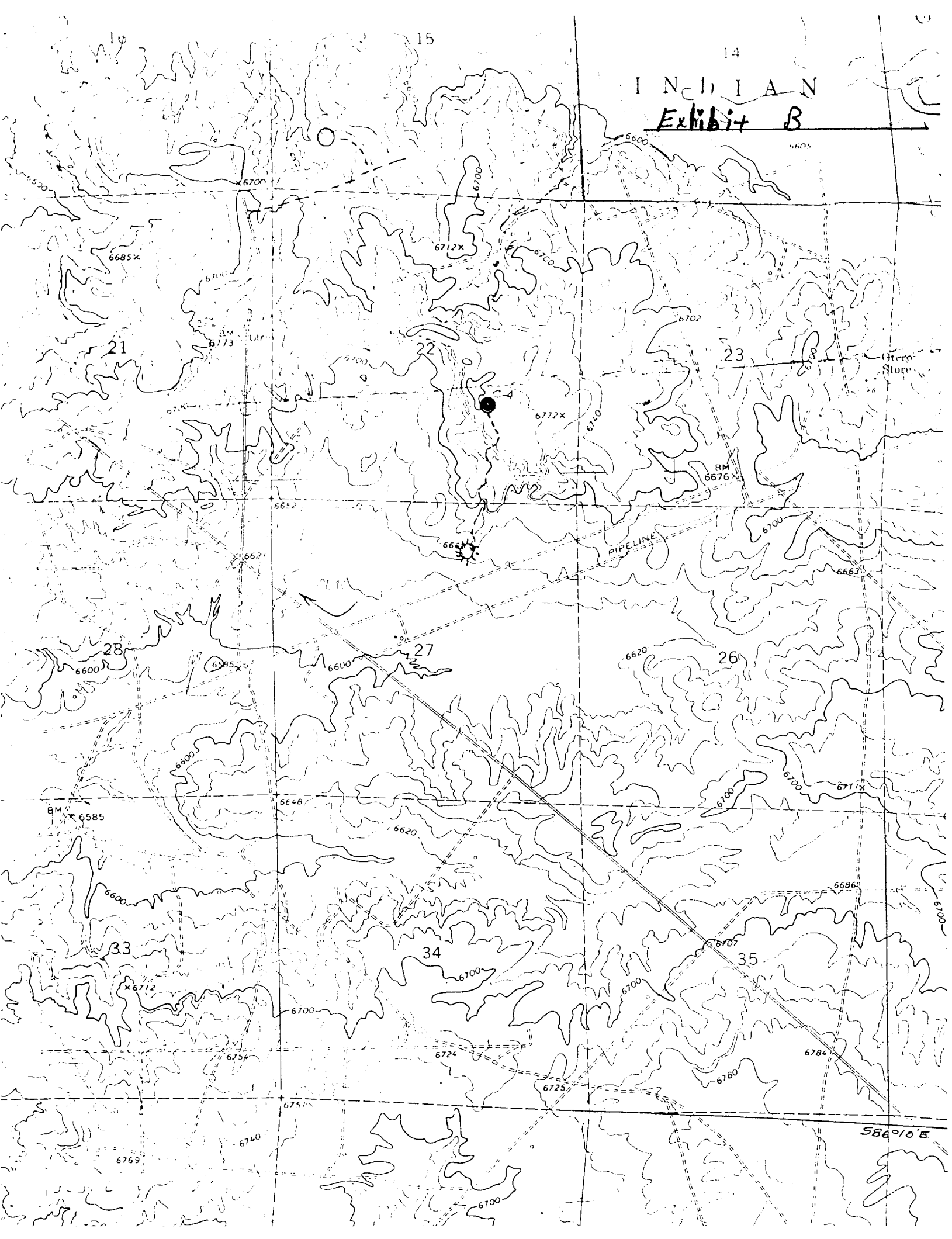
I hereby certify that the well location shown on this plat was plotted from field notes of actual surveys made by me or under my supervision, and that the same is true and correct to the best of my knowledge and belief.

Date Surveyed
September 15, 1982

Registered Professional Engineer and Land Surveyor

Fred B. Kern Jr.
Fred B. Kern Jr.

Certificate No. **3950**



INDIAN
Exhibit B

PIPELINE

586°10'E