

UNITED STATES  
DEPARTMENT OF THE INTERIOR  
GEOLOGICAL SURVEY

30-039-23319

## APPLICATION FOR PERMIT TO DRILL, DEEPEN, OR PLUG BACK

## 1a. TYPE OF WORK

DRILL ☒DEEPEN ☐PLUG BACK ☐

## b. TYPE OF WELL

OIL  
WELL ☒GAS  
WELL ☐OTHER ☐SINGLE  
ZONE ☒MULTIPLE  
ZONE ☐

## 2. NAME OF OPERATOR

Getty Oil Company

## 3. ADDRESS OF OPERATOR

P.O. Box 3360, Casper, WY 82602-3360 BUREAU OF LAND MANAGEMENT

## 4. LOCATION OF WELL (Report location clearly and in accordance with any State requirements.)

At surface

2510' FNL &amp; 330' FWL of Sec. 31 (SW/NW)

At proposed prod. zone same

## 14. DISTANCE IN MILES AND DIRECTION FROM NEAREST TOWN OR POST OFFICE\*

Approximately 11 miles Northwest of Lindrith, New Mexico

## 15. DISTANCE FROM PROPOSED\*

LOCATION TO NEAREST

PROPERTY OR LEASE LINE, FT.

(Also to nearest drlg. unit line, if any)

330'

130'

## 18. DISTANCE FROM PROPOSED LOCATION\*

TO NEAREST WELL, DRILLING, COMPLETED,

OR APPLIED FOR, ON THIS LEASE, FT.

1539'

## 16. NO. OF ACRES IN LEASE

1935

## 19. PROPOSED DEPTH

8100'

17. NO. OF ACRES ASSIGNED  
TO THIS WELL

160 Acres; NW/4 of Sec. 31

## 20. ROTARY OR CABLE TOOLS

Rotary

## 21. ELEVATIONS (Show whether DE, RT, GR, etc.)

DRILLING OPERATIONS AUTHORIZED ARE  
SUBJECT TO COMPLIANCE WITH ATTACHED

"GENERAL REQUIREMENTS"

7254' GR

## PROPOSED CASING AND CEMENTING PROGRAM

## 22. APPROX. DATE WORK WILL START\*

September 22, 1983

This action is subject to administrative  
appeal pursuant to 30-CFR 290.

SIZE OF HOLE	SIZE OF CASING	WEIGHT PER FOOT	SETTING DEPTH	QUANTITY OF CEMENT
12 1/4"	8 5/8"	24.0#	300'	* 248 cu ft to cement to surface
7 7/8"	5 1/2"	15.5# & 17.0#	8100'	* 2132 cu ft to cement to surface

Gas is dedicated

\* Cement volume will be 100% excess of calculated volume.  
Cement volumes will depend on volume calculated from hole caliper.

Thirteen Point Surface Use Plan attached.

RECEIVED  
OCT 12 1983  
OIL CON. DIV.  
DIST. 3

IN ABOVE SPACE DESCRIBE PROPOSED PROGRAM: If proposal is to deepen or plug back, give data on present productive zone and proposed new productive zone. If proposal is to drill or deepen directionally, give pertinent data on subsurface locations and measured and true vertical depths. Give blowout preventer program, if any.

24.

SIGNED



TITLE

Area Superintendent

DATE

8-22-83

(This space for Federal or State office use)

PERMIT NO.

APPROVAL DATE

APPROVED BY

TITLE

CONDITIONS OF APPROVAL, IF ANY:

NSL 1987

sh2

NMOC

APPROVED  
AS AMENDED

OCT 07 1983

R. B. Bowerman  
M. MILLENBACH

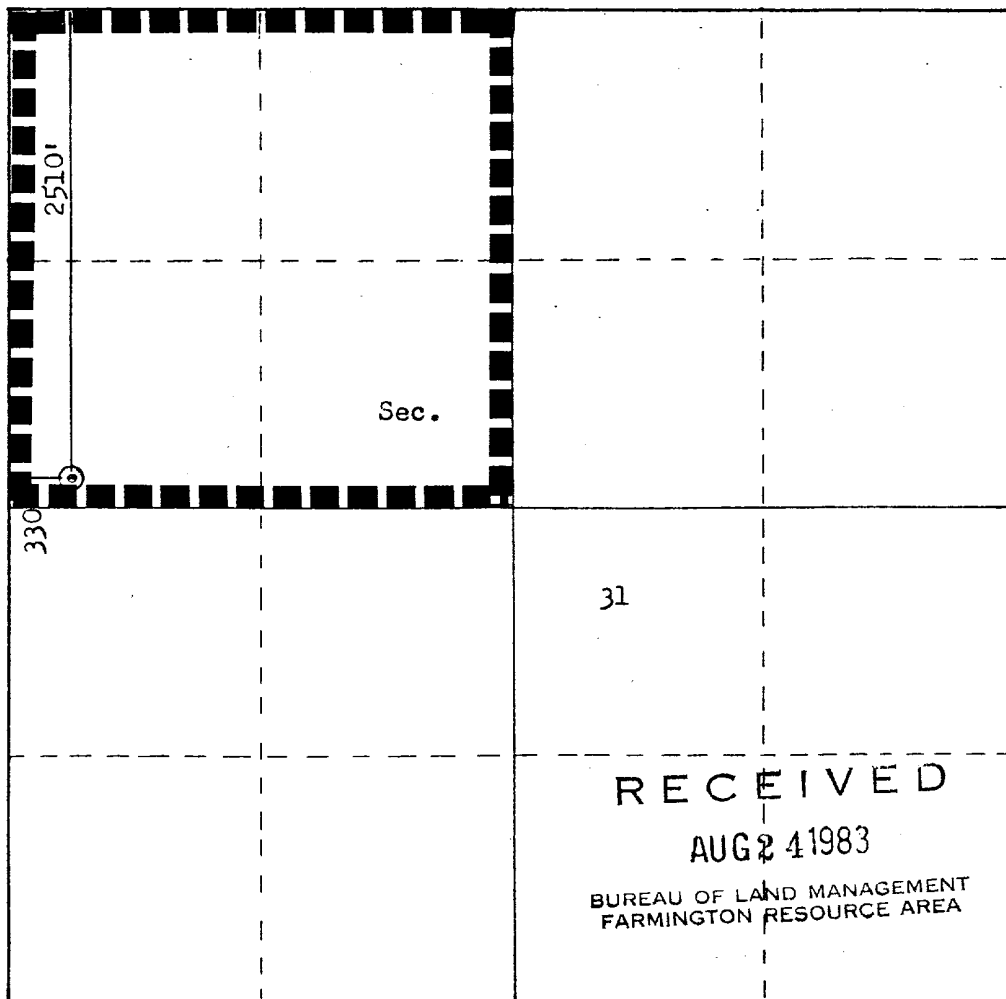
ASST AREA MANAGER

## OIL CONSERVATION DIVISION

STATE OF NEW MEXICO  
ENERGY AND MINERALS DEPARTMENTP. O. BOX 2088  
SANTA FE, NEW MEXICO 87501Form C-107  
Revised 10-1-78

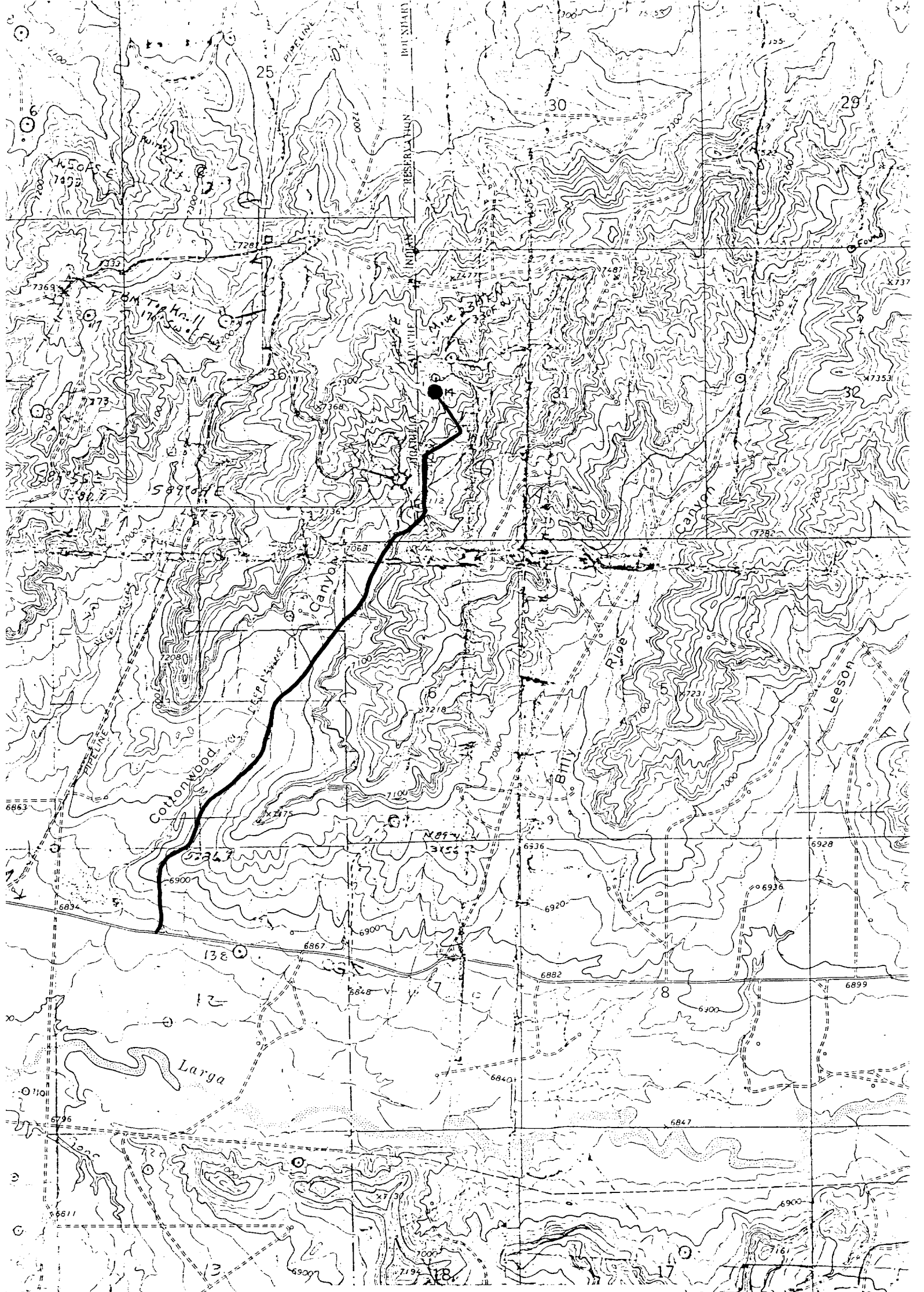
All distances must be from the outer boundaries of the Section.

Operator <b>GETTY OIL COMPANY</b>			Lease <b>L. L. McCONNELL</b>			Well No. <b>14</b>		
Unit Letter <b>E</b>	Section <b>31</b>	Township <b>25N</b>	Range <b>3W</b>	County <b>Rio Arriba</b>				
Actual Footage Location of Well:								
<b>2510</b>		feet from the <b>North</b>		line and <b>330</b>		feet from the <b>West</b>		line
Ground Level Elev. <b>7254</b>	Producing Formation <b>Gallup-Dakota</b>		Pool <b>Lindrith Gallup-Dakota West</b>			Dedicated Acreage: <b>NW/4, 160 Acres</b>		
<p>1. Outline the acreage dedicated to the subject well by colored pencil or hatchure marks on the plat below.</p> <p>2. If more than one lease is dedicated to the well, outline each and identify the ownership thereof (both as to working interest and royalty).</p> <p>3. If more than one lease of different ownership is dedicated to the well, have the interests of all owners been consolidated by communitization, unitization, force-pooling, etc?</p> <p><input type="checkbox"/> Yes <input type="checkbox"/> No If answer is "yes," type of consolidation _____</p> <p>If answer is "no," list the owners and tract descriptions which have actually been consolidated (by communitization, unitization, forced-pooling, or otherwise) or until a non-standard unit, eliminating such interests, has been approved by the Commission.</p>								



Scale: 1"=1000'

CERTIFICATION	
I hereby certify that the information contained herein is true and complete to the best of my knowledge and belief.	
Name	<i>DeW Bu</i>
Position	Area Superintendent
Company	Getty Oil Company
Date	8-22-83
I hereby certify that the well location shown on this plat was plotted from field notes of actual surveys made by me or under my supervision, and that the same is true and correct to the best of my knowledge and belief.	
Date Surveyed	August 9, 1983
Registered Professional Engineer and Land Surveyor	<i>Fred B. Kerr Jr.</i>
Certificate No.	3950



Vicinity Map for  
GETTY OIL COMPANY #1 L. L. McCONNELL  
2510'FNL 330'FWL Sec. 31-T25N-R3W  
RIO ARriba COUNTY, NEW MEXICO

MAP "A"

- Existing Road —————
- New Access Road —————