

UNITED STATES
DEPARTMENT OF THE INTERIOR
GEOLOGICAL SURVEY30-039-23325
5. LEASE DESIGNATION AND SERIAL NO.

SF 078874

6. IF INDIAN, ALLOTTEE OR TRIBE NAME

7. UNIT AGREEMENT NAME

Canyon Largo Unit

8. FARM OR LEASE NAME

Canyon Largo Unit

9. WELL NO.

331

10. FIELD AND POOL, OR WILDCAT

Devils Fork Gallup

11. SEC. T., R., M., OR BLK.
AND SURVEY OR AREA

Sec. 6, T24N, R6W

12. COUNTY OR PARISH

Rio Arriba

13. STATE

New Mexico

APPLICATION FOR PERMIT TO DRILL, DEEPEN, OR PLUG BACK

1a. TYPE OF WORK

DRILL ☒DEEPEN ☐PLUG BACK ☐

b. TYPE OF WELL

OIL
WELL ☒GAS
WELL ☐

OTHER

SINGLE
ZONE ☒MULTIPLE
ZONE ☐

2. NAME OF OPERATOR

Merrion Oil & Gas Corporation

3. ADDRESS OF OPERATOR

P. O. Box 1017, Farmington, New Mexico 87499

4. LOCATION OF WELL (Report location clearly and in accordance with any State requirements.)*

At surface

990 FNL and 990' FEL

At proposed prod. zone

Same

14. DISTANCE IN MILES AND DIRECTION FROM NEAREST TOWN OR POST OFFICE*

14 miles North of Counselor, New Mexico

10. DISTANCE FROM PROPOSED*
LOCATION TO NEAREST
PROPERTY OR LEASE LINE, FT.
(Also to nearest drg. unit line, if any)

990'

18. DISTANCE FROM PROPOSED LOCATION*
TO NEAREST WELL, DRILLING, COMPLETED,
OR APPLIED FOR, ON THIS LEASE, FT.

1810'

19. PROPOSED DEPTH

5875

17. NO. OF ACRES ASSIGNED
TO THIS WELL

20. ROTARY OR CABLE TOOLS

Rotary

21. ELEVATIONS (Show whether DF, RT, GR, etc.)

6536 GL

DRILLING OPERATIONS AUTHORIZED FOR
SUBJECT TO GENERAL CEMENTING PROGRAM
PROPOSED CASING AND CEMENTING PROGRAM

22. APPROX. DATE WORK WILL START*

Winter, 1983

23.

SIZE OF HOLE	SIZE OF CASING	WEIGHT PER FOOT	SETTING DEPTH	QUANTITY OF CEMENT
12-1/4"	8-5/8"	24 #/ft.	200'	170 sx (350.20 cu. ft.)
7-7/8"	4-1/2"	10.5 #/ft.	5875'	925 sx (1128.50 cu. ft.)

We will drill 12-1/4" hole to 200 ft. and set 200 ft. of 8-5/8", K-55, 24#, casing with 225 sx Class B cement with 3% CaCl₂. Will run open hole logs and if appears productive, will run 5875' of 4-1/2", K-55, 10.5 #/ft. casing and cement with 925 sx. Class H cement, 50-50 Poz mix with 2% gel. Circulating medium will be clear water and clay. Will set stage collar at approximately 4605' and bring cement up across Ojo Alamo formation. Will perforate and stimulate as required. Minimum specifications for pressure control equipment which is to be used - 10", 900 series double ram BOP.

ESTIMATED TOPS

San Jose	Surface	Cliffhouse	3650
Ojo Alamo	1605	Menefee	3750
Kirtland	1755	Point Lookout	4295
Fruitland	2005	Mancos	4605
Pictured Cliffs	2160	Gallup	5460
Lewis	2250		

IN ABOVE SPACE DESCRIBE PROPOSED PROGRAM: If proposal is to deepen or plug back, give data on present productive zone and proposed new productive zone. If proposal is to drill or deepen directionally, give pertinent data on subsurface locations and measured and true vertical depths. Give blowout preventer program, if any.

24.

SIGNED

TITLE

Operations Manager

(This space for Federal or State office use)

PERMIT NO.

APPROVAL DATE

APPROVED BY

TITLE

CONDITIONS OF APPROVAL, IF ANY:

DATE

9/12/83

APPROVED

AS AMENDED

OCT 27 1983

AREA MANAGER
FARMINGTON RESOURCE AREA

OIL CONSERVATION DIVISION

STATE OF NEW MEXICO
ENERGY AND MINERALS DEPARTMENTP. O. BOX 2048
SANTA FE, NEW MEXICO 87501Form C-107
Revised 10-1-

All distances must be from the outer boundaries of the Section.

Operator: MERRION OIL & GAS CORPORATION		Lease CANYON LARGO UNIT		Well No. 331
Unit Letter A	Section 6	Township 24N	Range 6W	County Rio Arriba
Actual Footage Location of Well: 990 feet from the North line and 990 feet from the East line				
Ground Level Elev: 6536	Producing Formation Gallup	Pool Devils Fork Gallup		Dedicated Acreage: 1807.5750 Acres
<p>1. Outline the acreage dedicated to the subject well by colored pencil or hatchure marks on the plat below.</p> <p>2. If more than one lease is dedicated to the well, outline each and identify the ownership thereof (both as to working interest and royalty).</p> <p>3. If more than one lease of different ownership is dedicated to the well, have the interests of all owners been consolidated by communitization, unitization, force-pooling, etc?</p> <p><input type="checkbox"/> Yes <input type="checkbox"/> No If answer is "yes," type of consolidation _____</p> <p>If answer is "no," list the owners and tract descriptions which have actually been consolidated. (Use reverse side of this form if necessary.) _____</p> <p>No allowable will be assigned to the well until all interests have been consolidated (by communitization, unitization, forced-pooling, or otherwise) or until a non-standard unit, eliminating such interests, has been approved by the Commission.</p>				

Sec.		SF 078874
6		RECEIVED SEP 27 1983 BUREAU OF LAND MANAGEMENT FARMINGTON RESOURCE AREA

Scale: 1"=1000'

CERTIFICATION

I hereby certify that the information contained herein is true and complete to the best of my knowledge and belief.

Name

Steve S. Dunn

Position

Operations Manager

Company

Merrion Oil & Gas Corporation

Date

9/12/83

I hereby certify that the well location shown on this plat was plotted from field notes of actual surveys made by me or under my supervision, and that the same is true and correct to the best of my knowledge and belief.

Date Surveyed

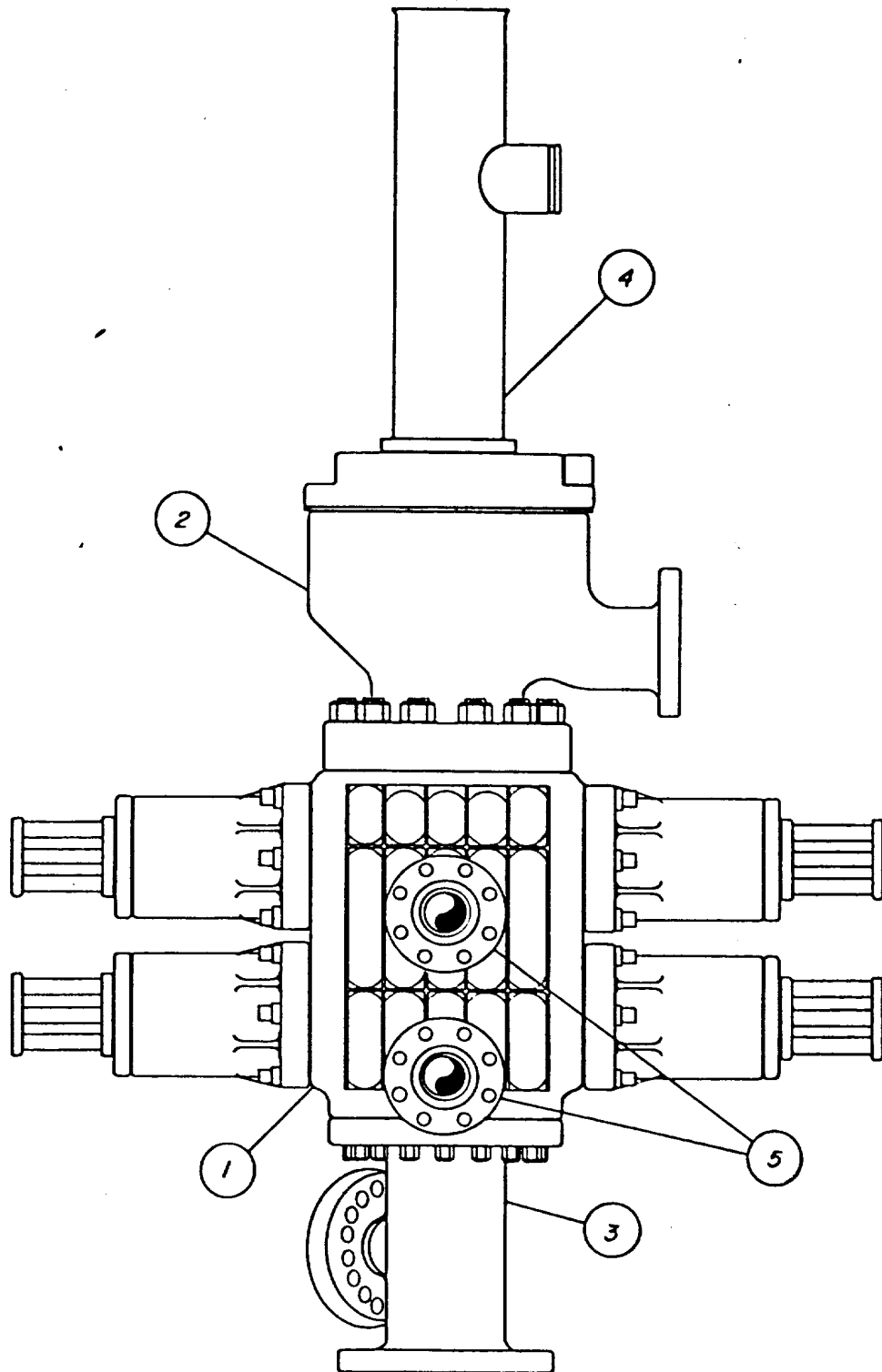
August 29, 1983

Registered Professional Engineer
and Land Surveyor

Fred B. Kerr Jr.

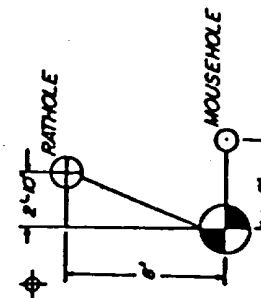
Certificate No. 4, AREA, N.M.

3950



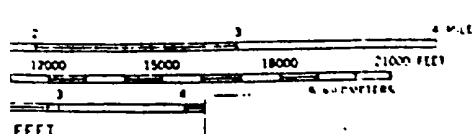
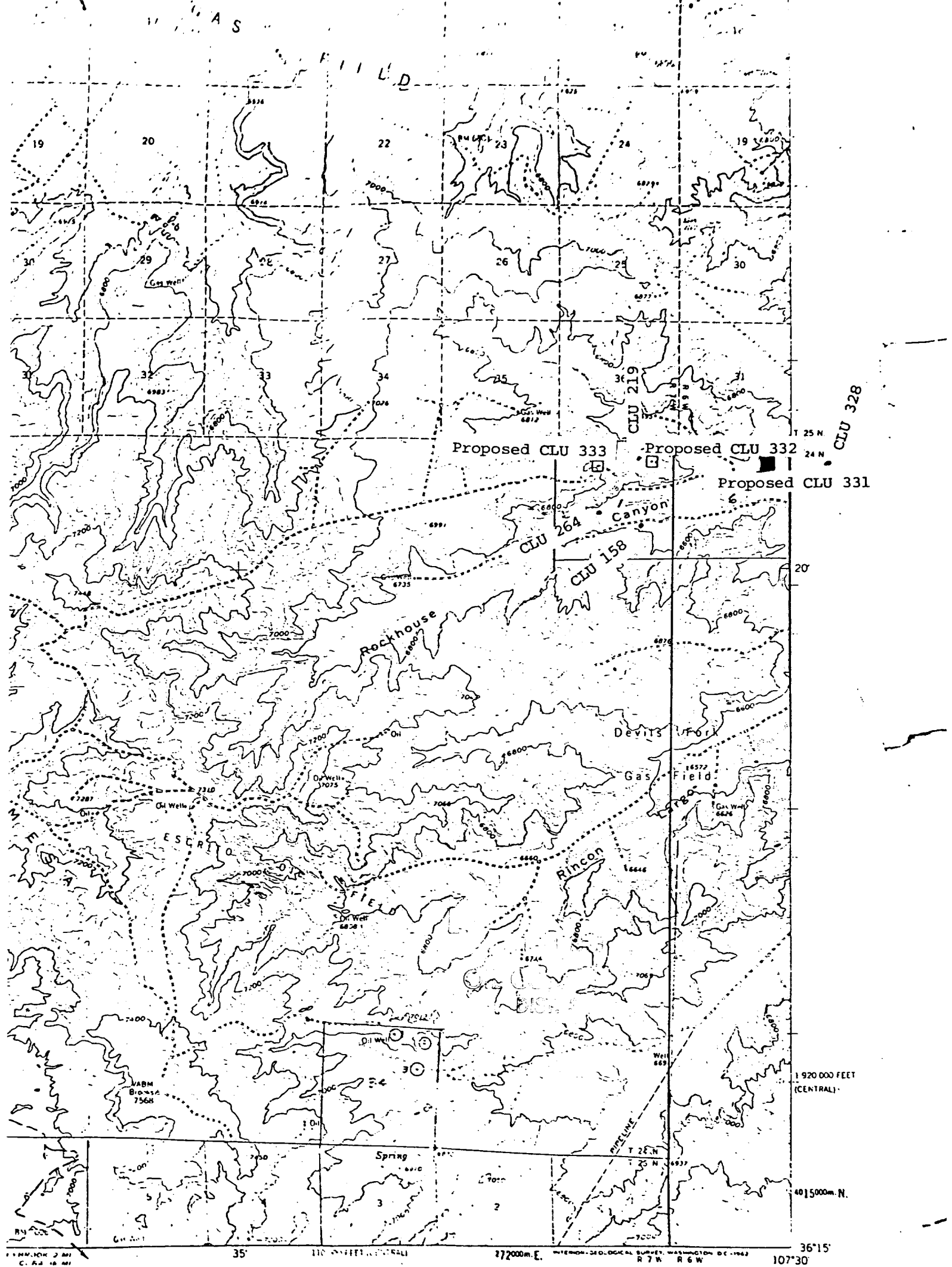
- ① SHAFFER 11" 3000 LB. MODEL LWS MANUAL LOCK RAM BLOWOUT PREVENTER
- ② GRANT 11" 3000 LB. ROTATING DRILL HEAD
- ③ 11" SPOOL
- ④ 11" FLOW NIPPLE
- ⑤ 4" 3000 LB. NOZZLE

Merrion Oil & Gas Corp.
 Canyon Largo Unit 331
 Sec. 6, T24N, R6W
 Rio Arriba Co., New Mex.



RECOMMENDED LOCATION SIZE : 280 ft. x 130 ft.
FROM CENTER OF HOLE TO : RESERVE PIT : 30 ft.
LOCATION EDGE : 100 ft.
FRONT : 140 ft.
BACK : 140 ft.

Merrion Oil & Gas Corp.
Canyon Largo Unit 331
Sec. 6, T24N, R6W
Rio Arriba Co., New Mexico



Vicinity Map for
MERRION OIL & GAS CORPORATION #331 CANYON LARGO UNIT
990'FNL 990'FEL Sec. 6-T24N-R6W
RIO ARRIBA COUNTY, NEW MEXICO

I. N. MEX.
W:0730/15
1959

OLORADO OR WASHINGTON 25. D.C.
THIS IS AVAILABLE ON REQUEST