



STATE OF NEW MEXICO  
**ENERGY AND MINERALS DEPARTMENT**  
OIL CONSERVATION DIVISION

August 9, 1984

TONY ANAYA  
GOVERNOR

6-24N-6W  
POST OFFICE BOX 2088  
STATE LAND OFFICE BUILDING  
SANTA FE, NEW MEXICO 87501  
(505) 827-5800

Merrion Oil & Gas Corporation  
P. O. Box 1017  
Farmington, New Mexico 87499

Attention: Steve S. Dunn, Operations Manager

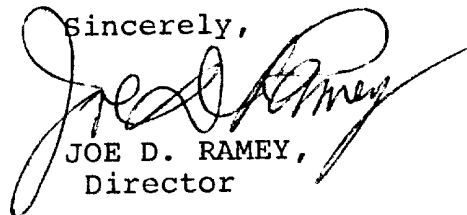
Administrative Order NSL-1853

Gentlemen:

Reference is made to your application for a non-standard location for your Canyon Largo Unit Well No. 338 to be located 1910 feet from the South line and 1670 feet from the East line of Section 6, Township 24 North, Range 6 West, NMPM, Devils Fork Gallup Pool, Rio Arriba County, New Mexico. The SE/4 of said Section 6 is to be dedicated to the well.

By authority granted me under the provisions of Rule 104 FI, the above-described unorthodox location is hereby approved.

Sincerely,



JOE D. RAMEY,  
Director

JDR/RLS/dr

cc: ✓ Oil Conservation Division - Aztec  
Oil & Gas Engineering Committee - Hobbs  
Bureau of Land Management - Farmington

RECEIVED  
AUG 13 1984  
OIL CON. DIV.  
SANTA FE



STATE OF NEW MEXICO  
ENERGY AND MINERALS DEPARTMENT

OIL CONSERVATION DIVISION  
AZTEC DISTRICT OFFICE

1000 RIO BRAZOS ROAD  
AZTEC, NEW MEXICO 87410  
(505) 334-6178

OIL CONSERVATION DIVISION  
BOX 2088  
SANTA FE, NEW MEXICO 87501

DATE 7-31-84

RE: Proposed MC \_\_\_\_\_  
Proposed DHC \_\_\_\_\_  
Proposed NSL X \_\_\_\_\_  
Proposed SWD \_\_\_\_\_  
Proposed WFX \_\_\_\_\_  
Proposed PMX \_\_\_\_\_

Gentlemen:

I have examined the application dated 7-18-84  
for the Merrion Oil & Gas Corp. Panguitch Unit #338 J-6-24N-6W  
Operator Lease and Well No. Unit, S-T-R

and my recommendations are as follows:

Approve:

Yours truly,

E. B. B.

## MERRION OIL &amp; GAS CORPORATION

P. O. Box 1017  
FARMINGTON, NEW MEXICO 87499

June 15, 1984

790 - 770  
650 - 1850

State of New Mexico  
Energy and Minerals Department  
Oil Conservation Division  
P. O. Box 2088  
Santa Fe, New Mexico 87501

Re: Canyon Largo Unit 338  
1910' FSL and 1670' FEL  
Sec. 6, T24N, R6W  
Rio Arriba Co., New Mexico


Gentlemen:

The above referred to location has been staked as unorthodox location due to topography. As Merrion Oil & Gas Corporation is the only operator in the surrounding area, we request approval for this location.

Thank you for your assistance in this matter.

Yours truly,

MERRION OIL &amp; GAS CORPORATION

  
Steve S. Dunn, Operations Manager

SSD/am

Enc.

RECEIVED  
JUN 18 1984  
OIL CON. DIV.  
DIST. 3

## OIL CONSERVATION DIVISION

P. O. BOX 2088

SANTA FE, NEW MEXICO 87501

Form C-107  
Revised 10-1-STATE OF NEW MEXICO  
ENERGY AND MINERALS DEPARTMENT

All distances must be from the outer boundaries of the Section.

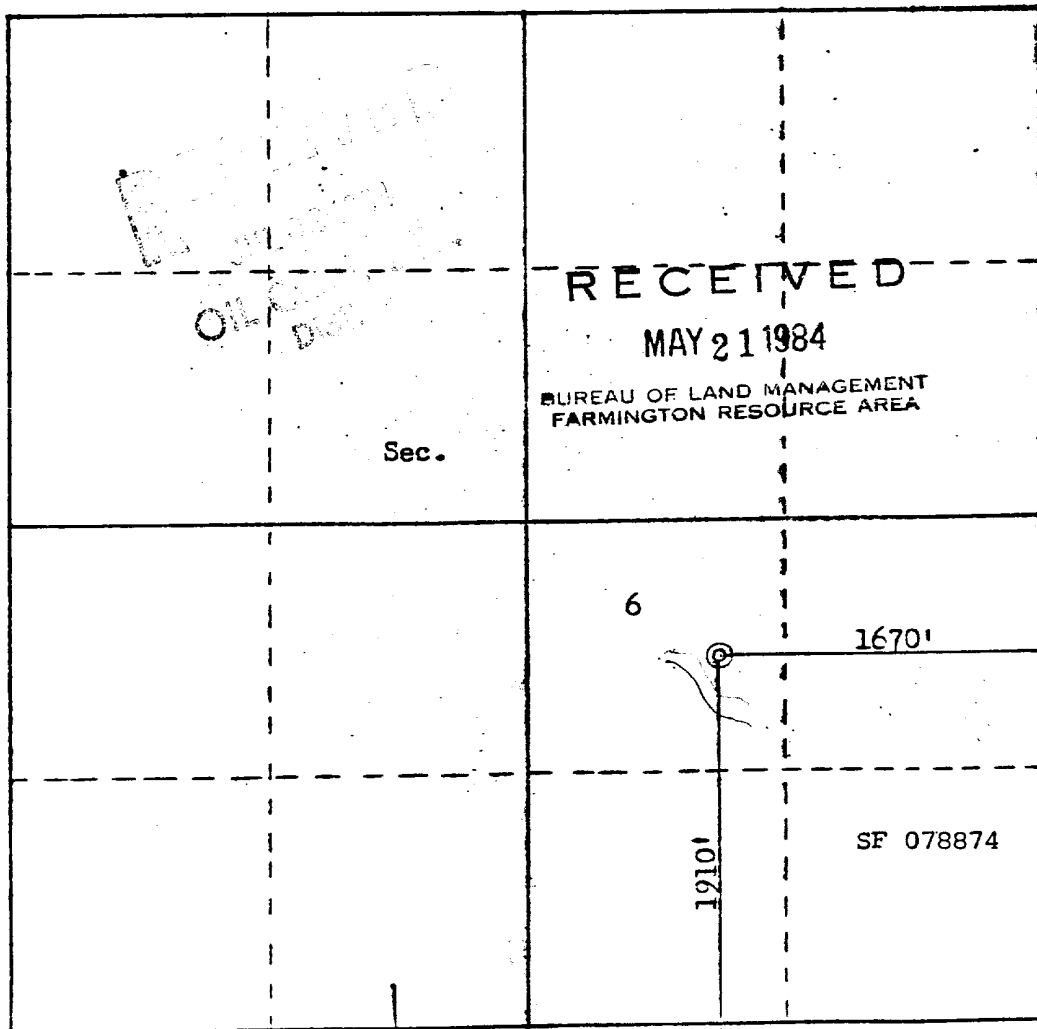
Operator <b>MERRION OIL &amp; GAS CORPORATION</b>			Lease <b>CANYON LARGO UNIT</b>		Well No. <b>338</b>
Unit Letter <b>J</b>	Section <b>6</b>	Township <b>24N</b>	Range <b>6W</b>	County <b>Rio Arriba</b>	
Actual Footage Location of Well: <b>1910</b> feet from the <b>South</b> line and <b>1670</b> feet from the <b>East</b> line					
Ground Level Elev. <b>6567</b>	Producing Formation <b>Gallup</b>		Pool <b>Devils Fork Gallup</b>		Dedicated Acreage: <b>160</b> Acres

1. Outline the acreage dedicated to the subject well by colored pencil or hatchure marks on the plat below.
2. If more than one lease is dedicated to the well, outline each and identify the ownership thereof (both as to working interest and royalty).
3. If more than one lease of different ownership is dedicated to the well, have the interests of all owners been consolidated by communitization, unitization, force-pooling, etc?

☐ Yes ☐ No If answer is "yes," type of consolidation \_\_\_\_\_

If answer is "no," list the owners and tract descriptions which have actually been consolidated. (Use reverse side of this form if necessary.) \_\_\_\_\_

No allowable will be assigned to the well until all interests have been consolidated (by communitization, unitization, forced-pooling, or otherwise) or until a non-standard unit, eliminating such interests, has been approved by the Commission.



Scale: 1"=1000'

## CERTIFICATION

I hereby certify that the information contained herein is true and complete to the best of my knowledge and belief.

Name

S. Gregory Merrion

Position

President

Company

Merrion Oil &amp; Gas Corp.

Date

5/16/84

I hereby certify that the well location shown on this plat was plotted from field notes of actual surveys made by me or under my supervision, and that the same is true and correct to the best of my knowledge and belief.

Date Surveyed

May 9, 1984

Registered Professional Engineer  
and Land Surveyor

Fred E. Kerr Jr.

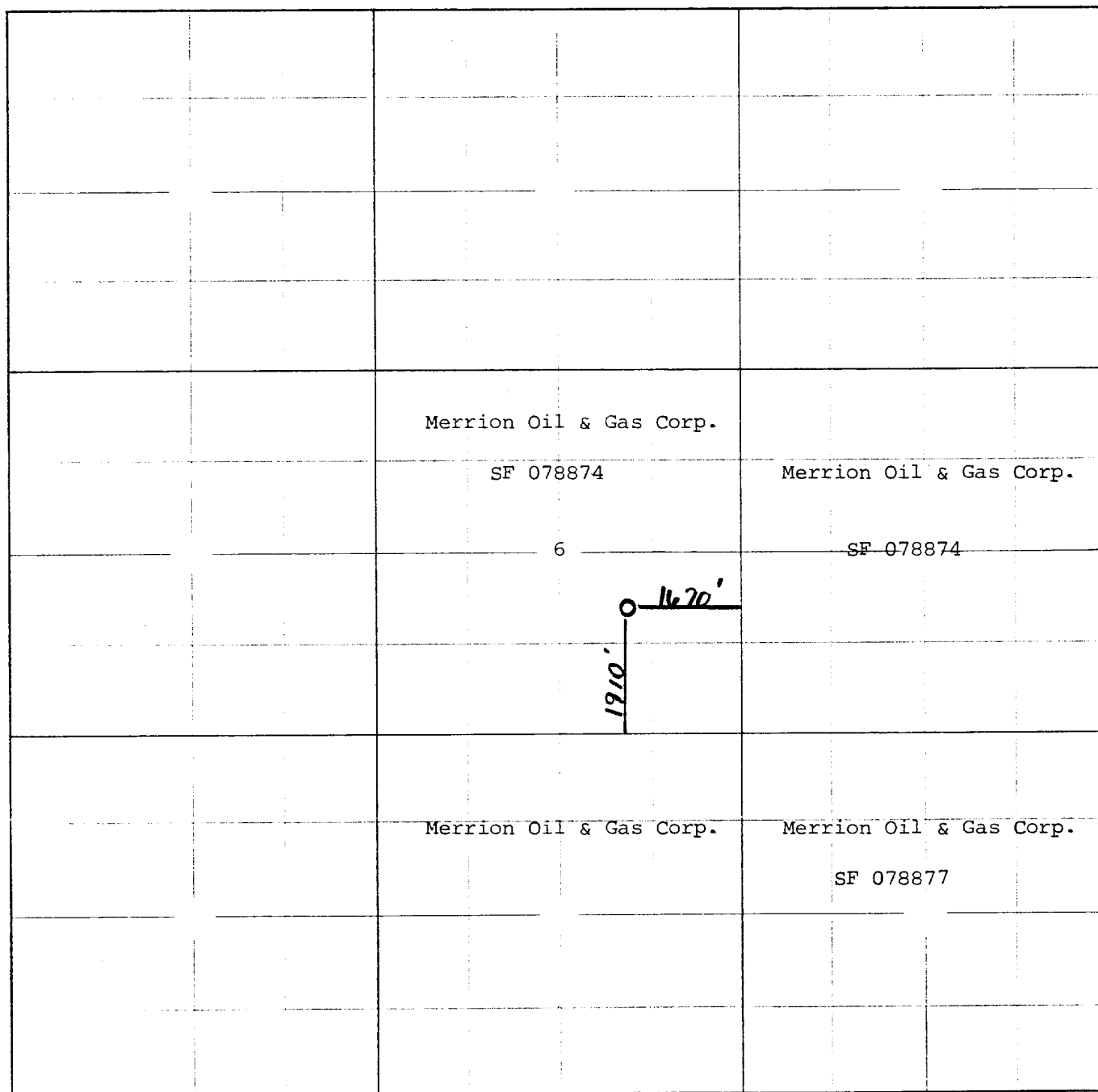
Certificate No. 4

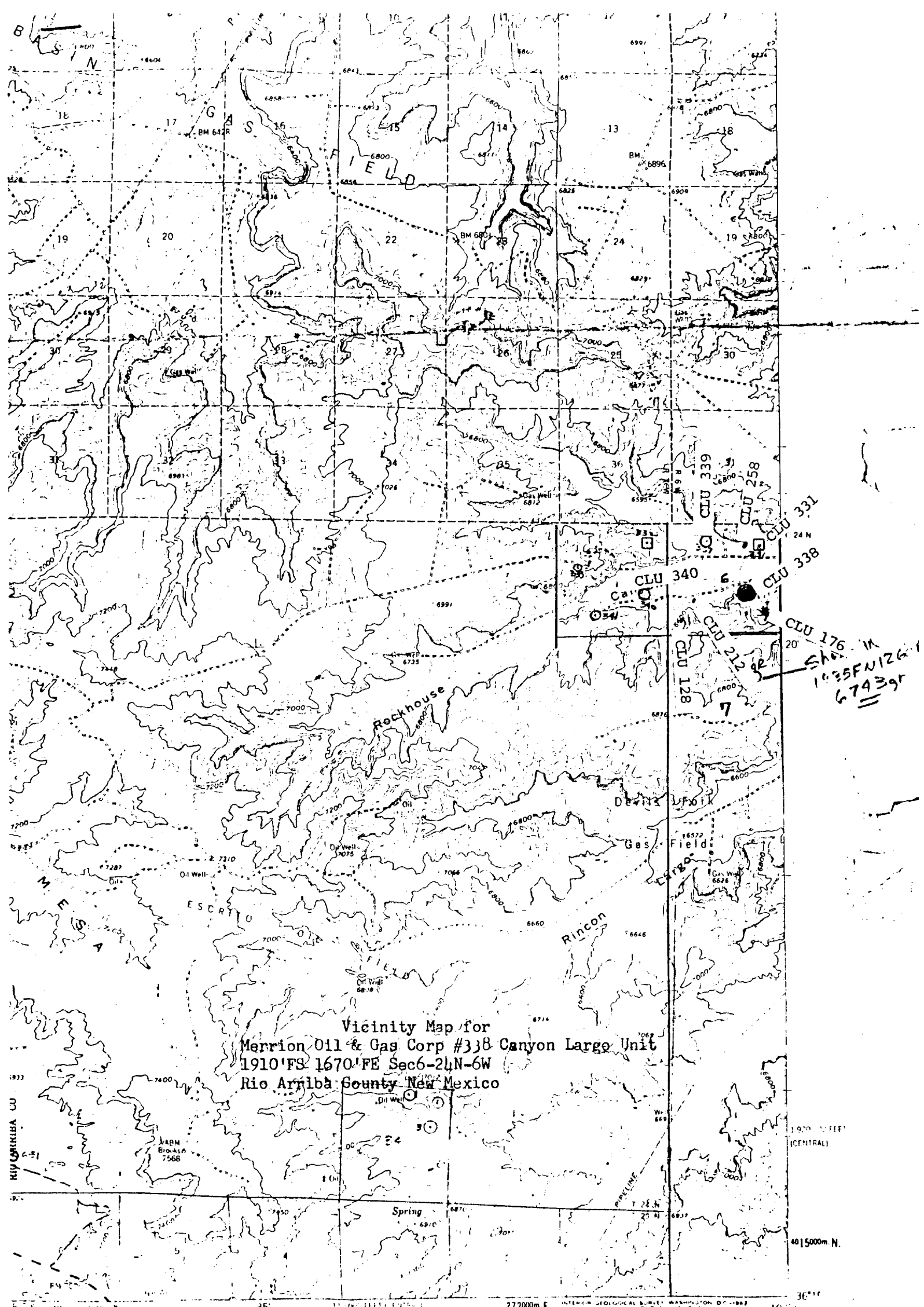
3950

MERRION OIL & GAS CORPORATION

CANYON LARGO UNIT 338

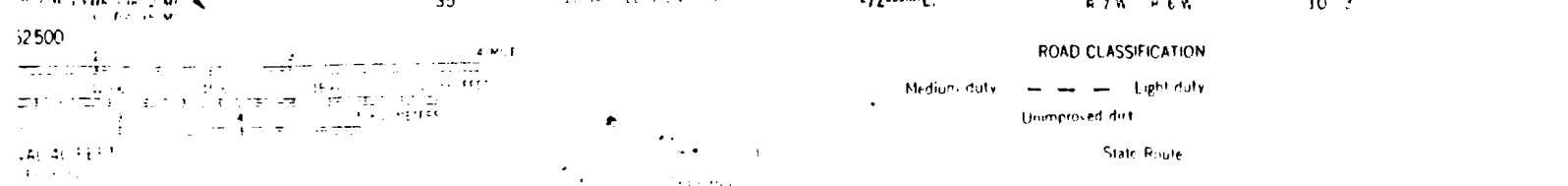
TOWNSHIP 24N RANGE 6W COUNTY Rio Arriba STATE New Mexico





Vicinity Map for  
Merrion Oil & Gas Corp #338 Canyon Large Unit  
1910'FS 1670'FE Sec6-24N-6W  
Rio Arriba County New Mexico

CLU 176 W  
Sh 1035FN126  
67439r



NAGEE71 N. MEX  
1967